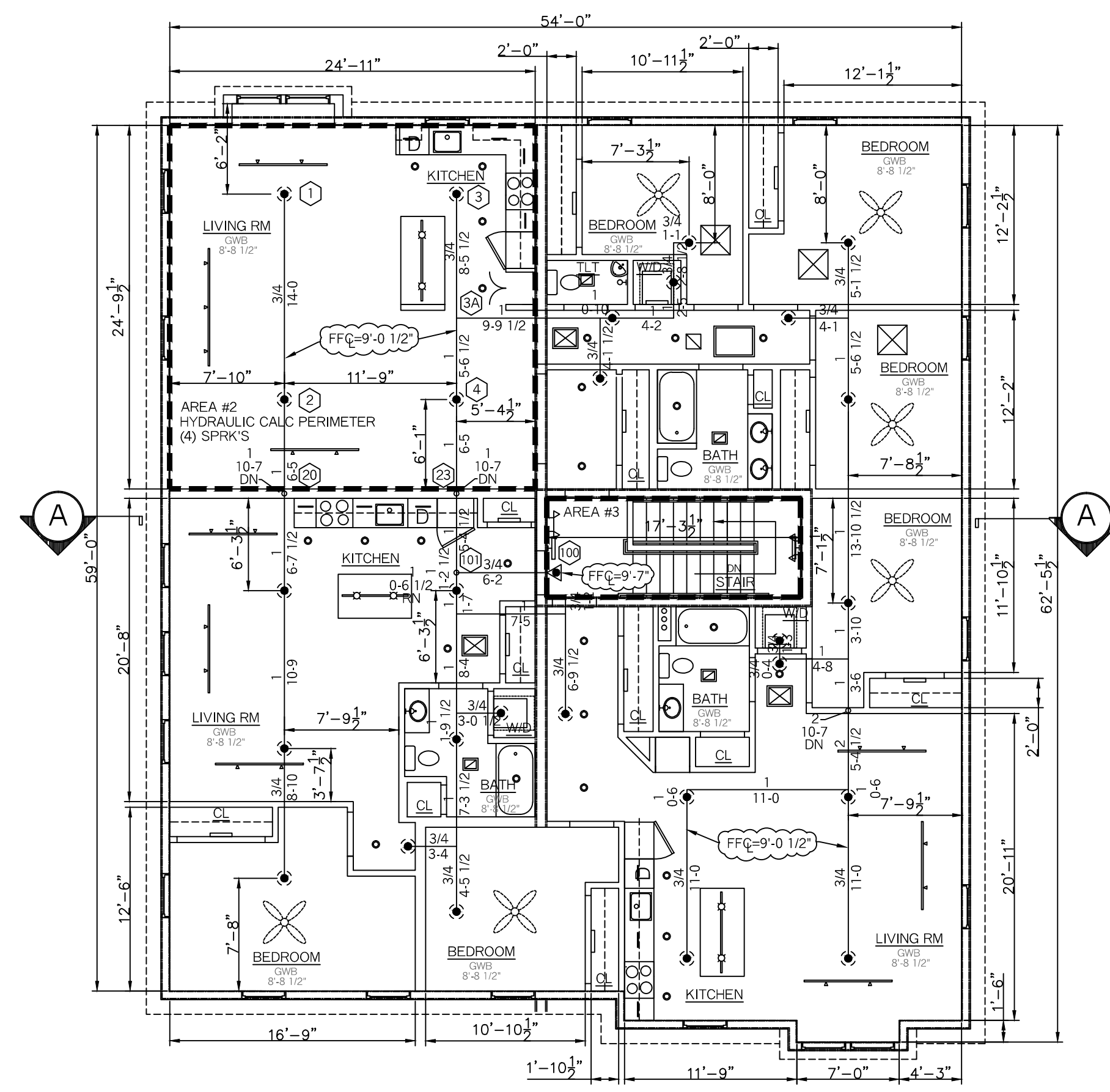


SECOND FLOOR PLAN
SCALE: 1/8" = 1'-0"
FLR ELEV: 11.33'
TOTAL FLR AREA= 3,250 SF

SPRINKLER HEAD INFORMATION, FOR THIS FLOOR ONLY

QTY	SIZE	ORIFICE	K-FACTOR	DESCRIPTION	MODEL	TEMP	ESCUTCHEON	SYMBOL
28	1/2"	1/2"	5.6	VIKING RES. WHITE PENDENT (ON DROP)	VK468	155	NONE	⬤
1	1/2"	1/2"	5.6	VIKING RES. WHITE SIDEWALL	VK486	155	RECESSED	◐

TOTAL HD'S= 112

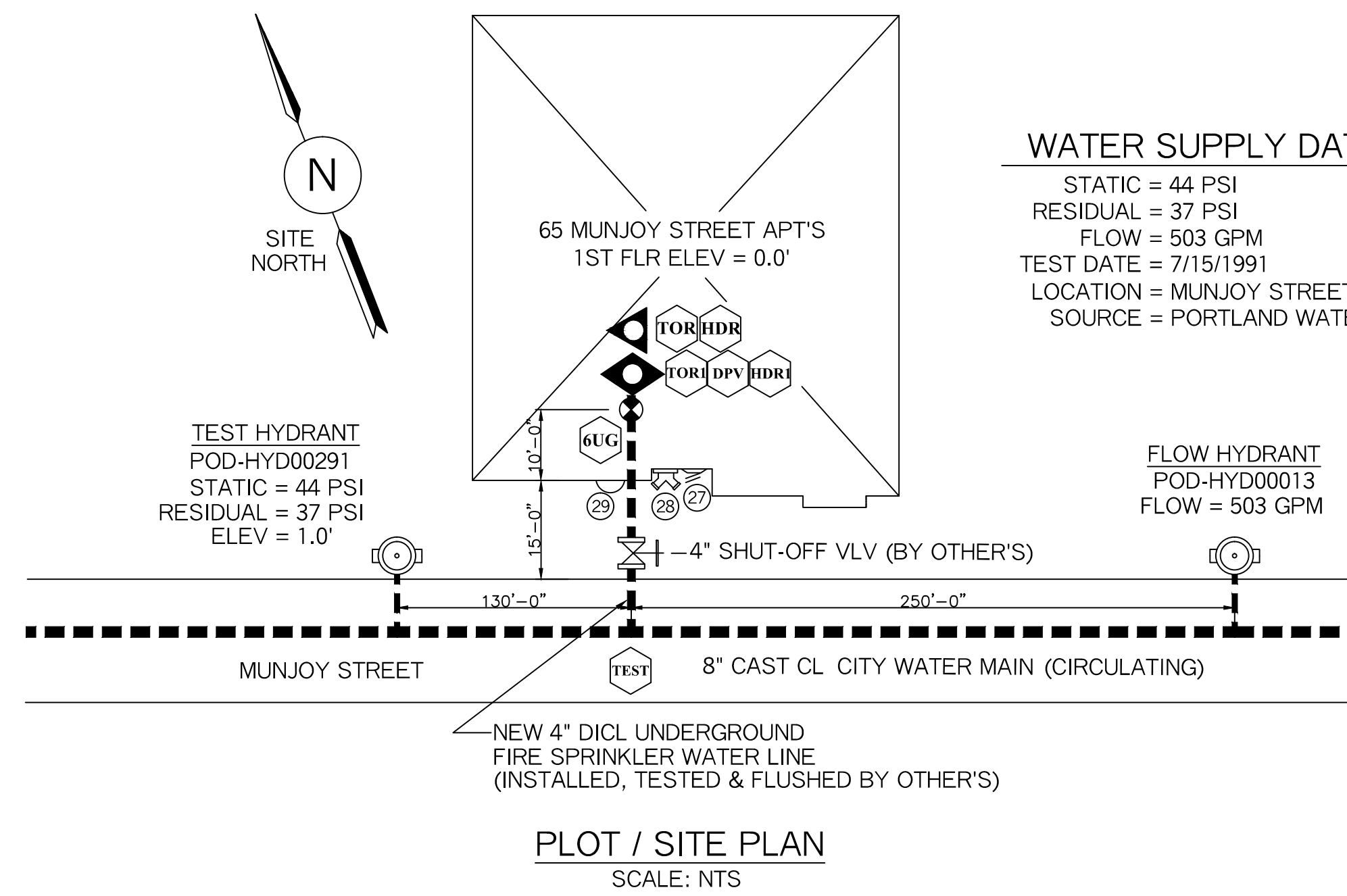


THIRD FLOOR PLAN
SCALE: 1/8" = 1'-0"
FLR ELEV: 22.17'
TOTAL FLR AREA= 3,250 SF

SPRINKLER HEAD INFORMATION, FOR THIS FLOOR ONLY

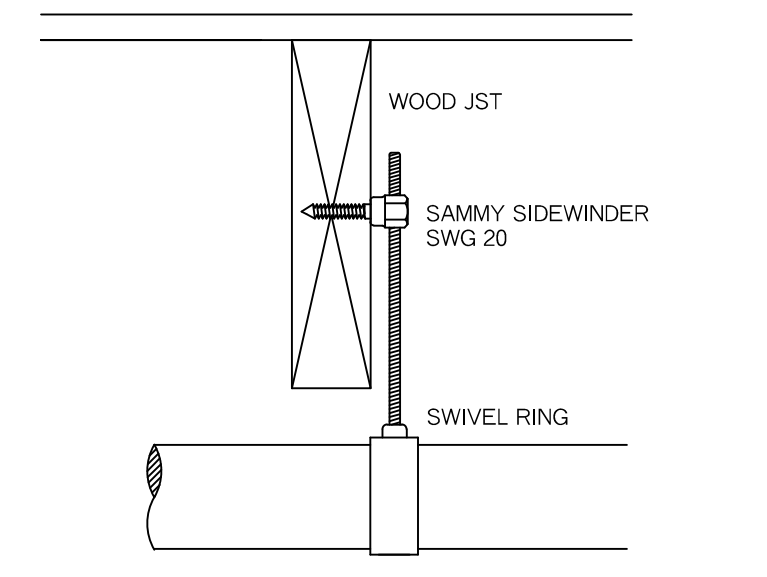
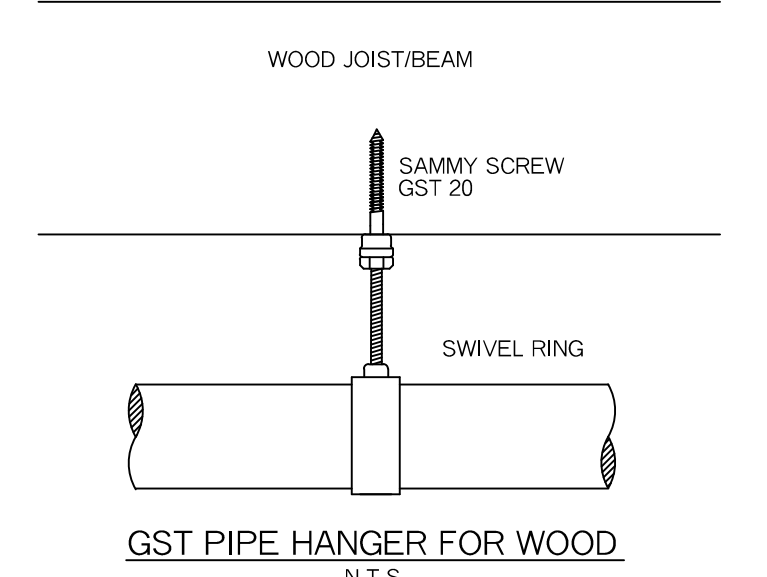
QTY	SIZE	ORIFICE	K-FACTOR	DESCRIPTION	MODEL	TEMP	ESCUTCHEON	SYMBOL
27	1/2"	1/2"	5.6	VIKING RES. WHITE PENDENT (ON DROP)	VK468	155	NONE	⬤
1	1/2"	1/2"	5.6	VIKING RES. WHITE SIDEWALL	VK486	155	RECESSED	◐

TOTAL HD'S= 112

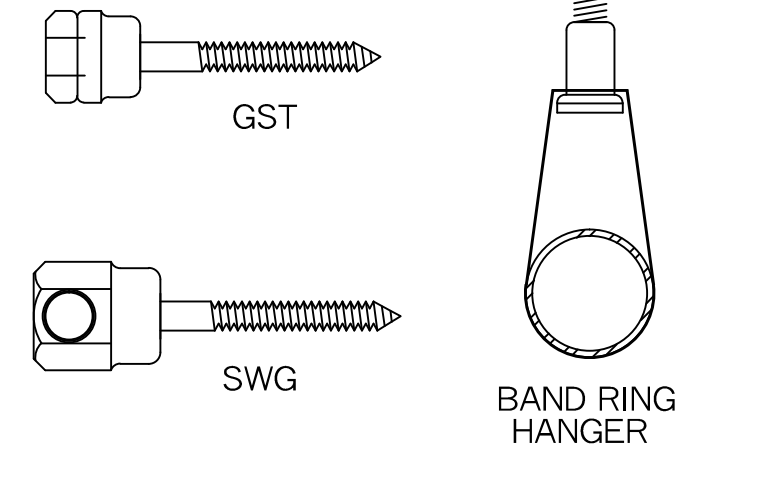


PLOT / SITE PLAN
SCALE: N.T.S.

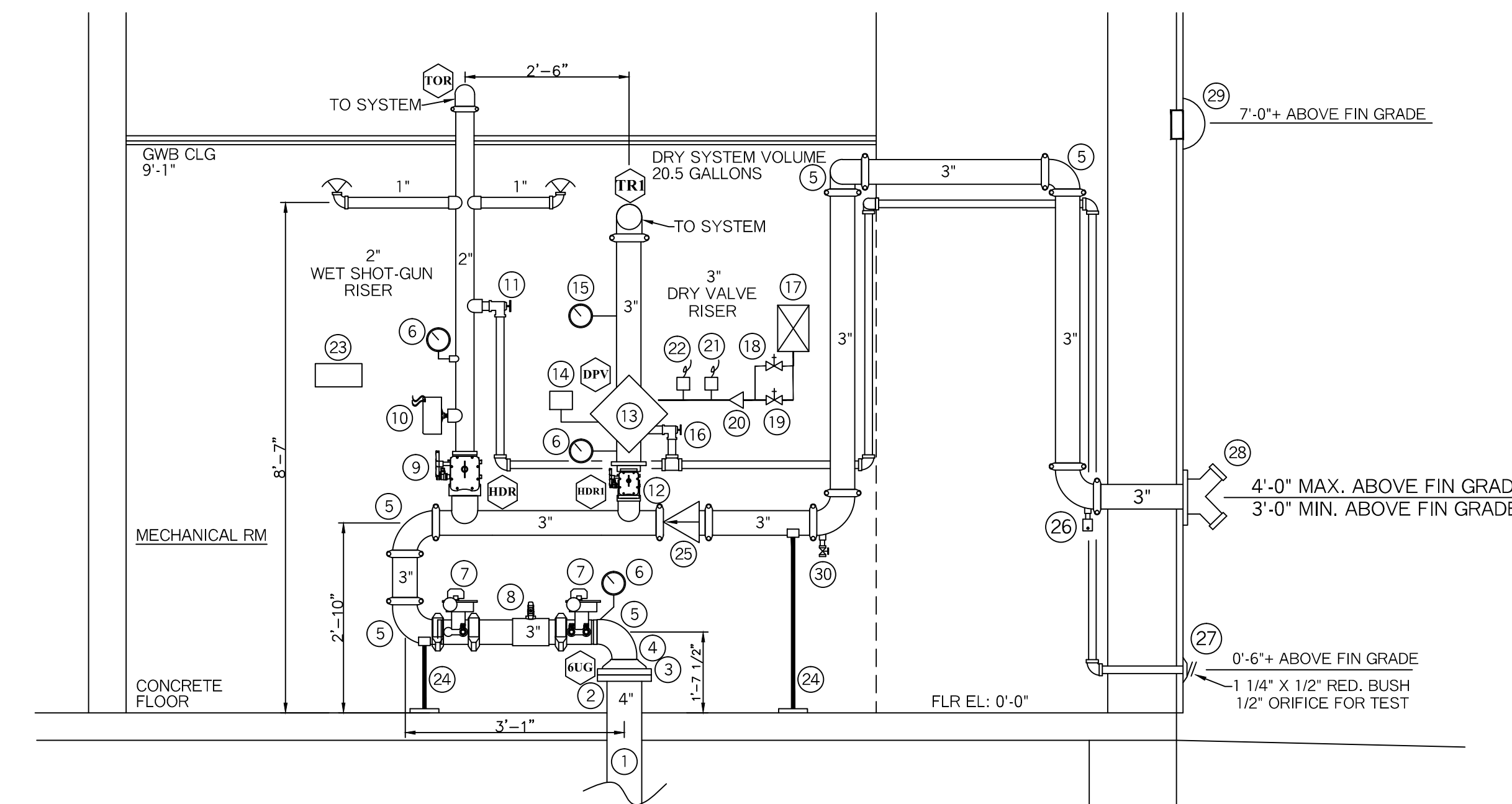
WATER SUPPLY DATA
STATIC = 44 PSI
RESIDUAL = 37 PSI
FLOW = 503 GPM
TEST DATE = 7/15/1991
LOCATION = MUNJOY STREET
SOURCE = PORTLAND WATER DIST.



WOOD JOIST
SAMMY SIDEWINDER
SWG 20
SWIVEL RING



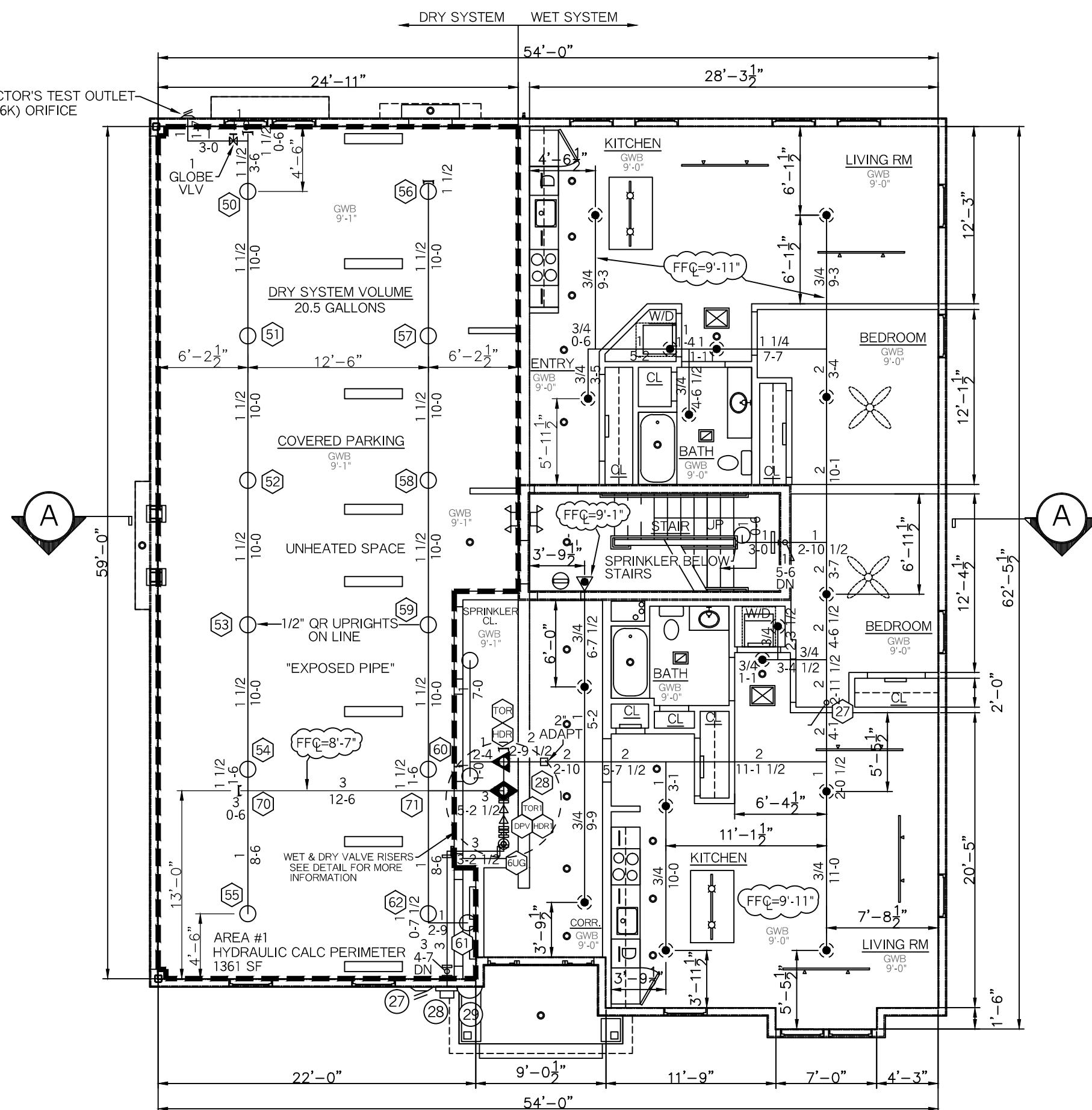
HANGER DETAILS
N.T.S.



VALVE RISER DETAIL
N.T.S.

VALVE RISER LEGEND

- | | |
|---|---|
| 1 4" DICL U.G. SPIGOT, PLUMB AND LEVEL (BY OTHER'S) | 17 1/16 HP GAST RISER MOUNTED AIR COMPRESSOR, 120V DEDICATED CIRCUIT BREAKER |
| 2 4" UNI-FLANGE (BY OTHER'S) | 18 1/4" BY-PASS LINE WITH VALVE (N.O.) |
| 3 4" GROOVED FLANGE | 19 1/2" AIR LINE SHUT-OFF VALVE (N.C.) |
| 4 4" X 3" GROOVED CONCENTRIC REDUCER | 20 1/2" AIR LINE CHECK VALVE |
| 5 3" GROOVED ELBOW | 21 COMPRESSOR ON-OFF SWITCH |
| 6 WATER PRESSURE GAUGE (3.5" DIA.) | 22 LOW AIR SWITCH, 20.40 |
| 7 3" BUTTERFLY VLV W/ TAMPER SWITCH (N.O.) | 23 SPARE HEAD BOX, 6 HD CAPACITY W/ WRENCH |
| 8 3" AMES COLT "C200" DC BFP | 24 PIPE STAND |
| 9 2" BUTTERFLY VALVE WITH TAMPER SWITCH (N.O.) | 25 3" CHECK VLV (FDC) |
| 10 POTTER VS-SP VANE TYPE FLOWSWITCH | 26 1/2" AUTO BALL DRIP |
| 11 1" TEST-N-DRAIN VALVE (7/16" TEST ORIFICE) (N.C.) | 27 1 1/4" GALV. 45 ELBOW W/ GALV. GRINNELL PLATE (MAIN DRAIN) |
| 12 3" GROOVED BUTTERFLY VALVE WITH TAMPER SWITCH (N.O.) | 28 2 1/2" X 2 1/2" X 4" SIAMESE FDC W/ WALL PLATE, CAP & CHAIN SEE MAIN FLR PLAN FOR LOCATION |
| 13 3" DRY PIPE VALVE | 29 ELECTRIC BELL, 6" DIA., WITH BACKBOX, DEDICATED CIRCUIT POWER (MOUNTED TO OUTSIDE BY OTHERS) |
| 14 POTTER PS-10 PRESSURE SWITCH | 30 1/2" BALL VLV (N.C.) |
| 15 AIR GAUGE | |
| 16 1 1/4" ANGLE VALVE (MAIN DRAIN) (N.C.) | |

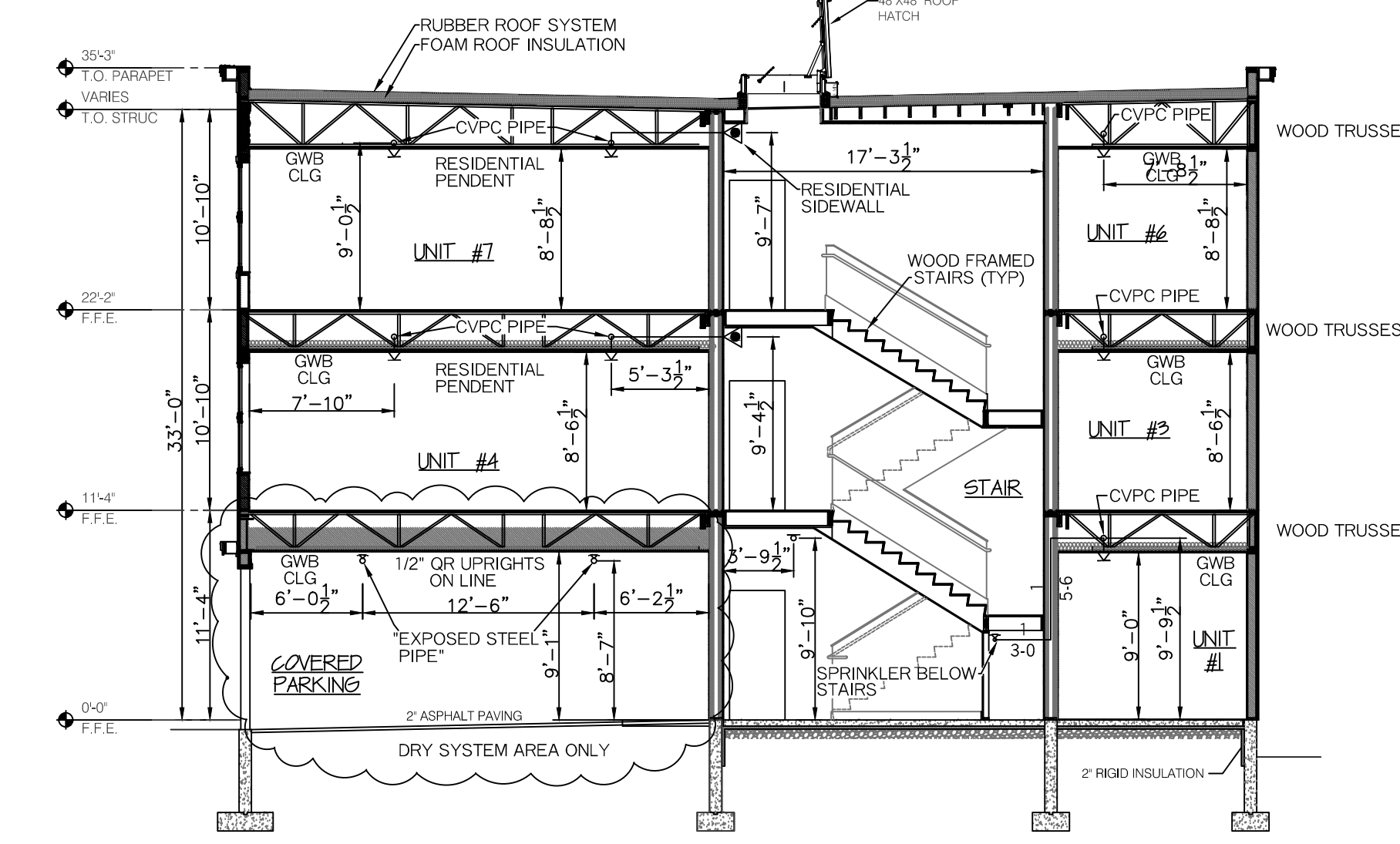


FIRST FLOOR PLAN
SCALE: 1/8" = 1'-0"
FLR ELEV: 0.0'
TOTAL FLR AREA= 3,250 SF

SPRINKLER HEAD INFORMATION, FOR THIS FLOOR ONLY

QTY	SIZE	ORIFICE	K-FACTOR	DESCRIPTION	MODEL	TEMP	ESCUTCHEON	SYMBOL
16	1/2"	1/2"	5.6	VIKING OR BRASS UPRIGHT (ON LINE)	VK300	155	NONE	○
16	1/2"	1/2"	5.6	VIKING RES. WHITE PENDENT (ON DROP)	VK468	155	RECESSED	⬤
2	1/2"	1/2"	5.6	VIKING RES. WHITE SIDEWALL	VK486	155	RECESSED	◐

TOTAL HD'S= 32



BUILDING SECTION -AA-
SCALE: 1/8" = 1'-0"

"DRY SYSTEM"		"WET SYSTEM"		"WET SYSTEM"	
HYDRAULIC DATA (AREA #1)		HYDRAULIC DATA (AREA #2)		HYDRAULIC DATA (AREA #3)	
MAIN FLOOR- COVERED PARKING		3RD FLOOR- APARTMENT		3RD FLOOR- STAIRS	
BASIS OF DESIGN (NFPA 13, 2016 EDITION)		BASIS OF DESIGN (NFPA 13, 2016 EDITION)		BASIS OF DESIGN (NFPA 13, 2016 EDITION)	
DENSITY	AREA OF COVERAGE	DENSITY	AREA OF COVERAGE	DENSITY	AREA OF COVERAGE
.15	1361 SQ FT	.0508	(4) SPRK'S	.056	(1) SPRK (16' X 18')
SPRINKLERS	TOTAL THREAD TEMP	SPRINKLERS	TOTAL THREAD TEMP	SPRINKLERS	TOTAL THREAD TEMP
13	1/2" (5.6K) 155	4	1/2" (4.9K) 155	1	1/2" (4.0K) 155
SYSTEM DEMAND AT BOTTOM OF RISER (BOR):		SYSTEM DEMAND AT BOTTOM OF RISER (BOR):		SYSTEM DEMAND AT BOTTOM OF RISER (BOR):	
PRESSURE	FLOW	PRESSURE	FLOW	PRESSURE	FLOW
266.12	31.83	40.14	55.86	39.12	16.13
SAFETY MARGIN:	3.74 PSI	SAFETY MARGIN:	3.75 PSI	SAFETY MARGIN:	4.86 PSI
OCCUPANCY CLASS: ORD. GRP. I		OCCUPANCY CLASS: RESIDENTIAL		OCCUPANCY CLASS: STAIRS	

SYSTEM SYMBOL LEGEND:

- | | |
|----------------------|---------------------------|
| - = DRAIN VALVE | ◀ = WET SHOT-GUN RISER |
| ⊞ = PLUG | ⬤ = DRY PIPE VALVE |
| ⊞ = GROOVED COUPLING | ⊞ = HYDRANT |
| [= GROOVED CAP | ⊞ = HYDRAULIC CALC REF PT |
- N.O. = NORMALLY OPEN
N.C. = NORMALLY CLOSED
N.I.C. = NOT IN CONTRACT
LPD = LOW POINT DRAIN

NFPA 13R NOTES:

- SPRINKLERS SHALL BE INSTALLED IN ALL AREA'S EXCEPT THE FOLLOWING:
- BATHROOMS WHERE THE AREA DOES NOT EXCEED 55 SF
 - CLOTHES CLOSET'S, LINEN CLOSET'S AND PANTRIES THAT MEET THE FOLLOWING CONDITIONS:
 - THE AREA OF THE SPACE DOES NOT EXCEED 24 SF
 - THE LEAST DIMENSION DOES NOT EXCEED 3'-0"
 - THE WALLS AND CEILINGS ARE SURFACED WITH NON-COMBUSTIBLE OR LIMITED COMBUSTIBLE MATERIALS.
 - SPRINKLERS SHALL BE INSTALLED IN ANY CLOSET USED FOR HEATING OR AIR CONDITIONING EQUIPMENT
 - PORCHES, BALCONIES, CORRIDORS AND STAIRS THAT ARE OPEN AND ATTACHED
 - ATTICS, PENTHOUSES, EQUIPMENT ROOMS, ELEVATOR MACHINE ROOMS, CONCEALED SPACES DEDICATED EXCLUSIVELY TO AND CONTAINING ONLY DWELLING UNIT VENTILATION EQUIPMENT, CRAWL SPACES, FLOOR/CEILING SPACES, NON-COMBUSTIBLE ELEVATOR SHAFTS WITH THE CAR IN COMPLIANCE WITH ANSI A17.1 "SAFETY CODE FOR ELEVATORS" AND OTHER CONCEALED SPACES THAT ARE NOT USED OR INTENDED FOR LIVING PURPOSES OR STORAGE AND DO NOT CONTAIN FUEL FIRED EQUIPMENT
 - CLOSETS ON EXTERIOR BALCONIES, REGARDLESS OF SIZE, AS LONG AS THERE ARE NO DOORS OR UNPROTECTED PENETRATIONS FROM THE CLOSET DIRECTLY INTO THE DWELLING UNIT.

SYSTEM GENERAL NOTES:

- BOTH A WET SYSTEM AND DRY PIPE SYSTEM WITH AUTOMATIC SPRINKLERS DESIGNED AND INSTALLED PER NFPA 13R (2016 EDITION)
- NEW 4" DICL SPRINKLER WATER SERVICE LINE TO BE INSTALLED, TESTED AND FLUSHED BY OTHER'S IN ACCORDANCE WITH NFPA 24 AND LOCAL CODES.
- RESIDENTIAL FIRE PROTECTION TO START AT END OF 4" DICL SPIGOT, 1'-0" +/- AFF IN A PLUMB LEVEL POSITION IN THE SPRINKLER ROOM ON THE FIRST LEVEL.
- 2" SHOT-GUN VALVE RISER FOR THE WET SYSTEM (ALL LIVING AREA'S).
- 3" DRY PIPE VALVE RISER FOR THE DRY SYSTEM (CAR PARKING AREA ONLY).
- EXPOSED LINE PIPING IN THE CAR PARKING AREA TO BE SCHEDULE 40 BLACK STEEL WITH THREADED C.I. FITTINGS AND 1/2" BRASS UPRIGHT HEADS ON LINE.
- EXPOSED MAIN PIPING IN THE CAR PARKING AREA TO BE SCHEDULE 10 BLACK STEEL WITH GROOVED C.I. FITTINGS AND GROOVED COUPLINGS.
- CVPC BLAZEMASTERS PLASTIC PIPE AND FITTINGS TO BE INSTALLED ON THE FIRST, SECOND AND THIRD FLOORS OF THE WET SYSTEM ONLY. ALL CVPC PIPE TO BE CONCEALED FROM VIEW, INSTALLED IN WALLS AND ABOVE GWB CEILINGS.
- WHITE RECESSED RESIDENTIAL PENDENT HEADS WILL BE INSTALLED IN THE CEILINGS AND WHITE RECESSED RESIDENTIAL SIDEWALL HEADS WILL BE INSTALLED ON THE WALLS IN ALL RESIDENTIAL AREA'S.

PROJECT NAME: 65 MUNJOY STREET APT'S 65 MUNJOY STREET PORTLAND, ME. 04101	FIRE SPRINKLER PLANS AND DETAILS REQUIRED APPROVALS: STATE FIRE MARSHALS OFFICE LOCAL FIRE DEPARTMENT OWNER	RESIDENTIAL FIRE PROTECTION, LLC DATE: 1-5-2016 SCALE: 1/8" = 1'-0"
CONTRACT WITH: WRIGHT-RYAN CONSTRUCTION CO. 10 DANFORTH STREET PORTLAND, ME. 04101 PH: (207) 773-3625	DRAWN BY: TPP NICET III (00854) CERTIFICATION # 102854	CONTRACT NO. C16038 DRAWING NO. 1 OF 1
RESIDENTIAL FIRE PROTECTION 64 DAGGETT HILL ROAD, GREENE, MAINE 04236 PH: (207) 946-3473 FAX: (207) 946-3474		CONTRACTOR LICENSE #511 CONTRACTOR MFR #80