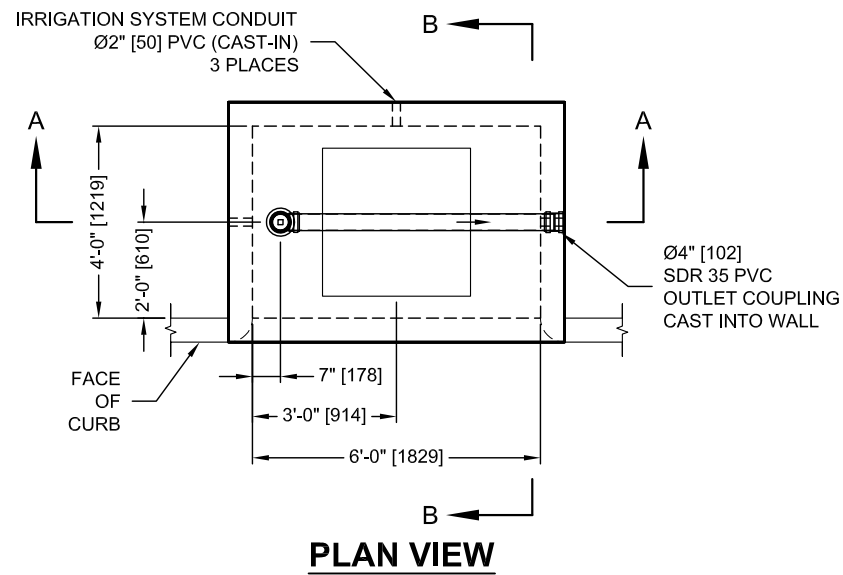


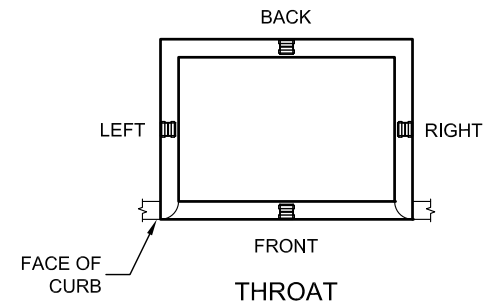
FILTERRA DESIGN NOTES

THE FILTERRA TREATMENT CAPACITY IS DETERMINED BY THE TREATMENT RATE OF THE FILTERRA MEDIA. A SEPARATE INLET STRUCTURE MUST BE INSTALLED DOWNSTREAM OF THE OFFLINE FILTERRA TO CONVEY FLOWS IN EXCESS OF THE SYSTEM DESIGN CAPACITY. SEE THE FILTERRA DESIGN, OPERATION, AND PERFORMANCE GUIDE FOR MORE INFORMATION.



**Ø 7" x 8" [178 x 203]
CLEANOUT**
(ACTUAL PRODUCT MAY VARY)
N.T.S.

**36" x 36" [914 x 914]
TREE GRATE**
(ACTUAL PRODUCT MAY VARY)
N.T.S.

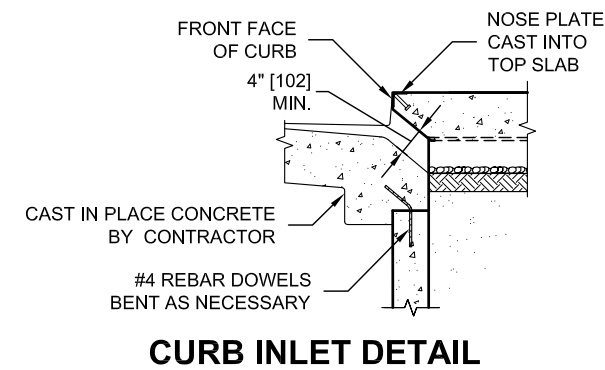
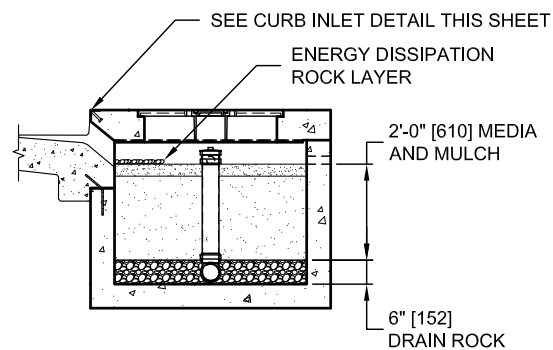
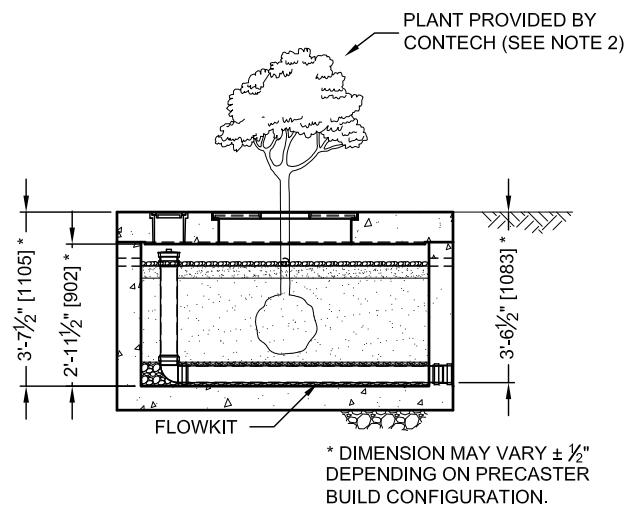


OUTFLOW PIPE ORIENTATION OPTIONS

ORIENTATION REFERENCE IS INLET THROAT

SITE SPECIFIC DATA REQUIREMENTS

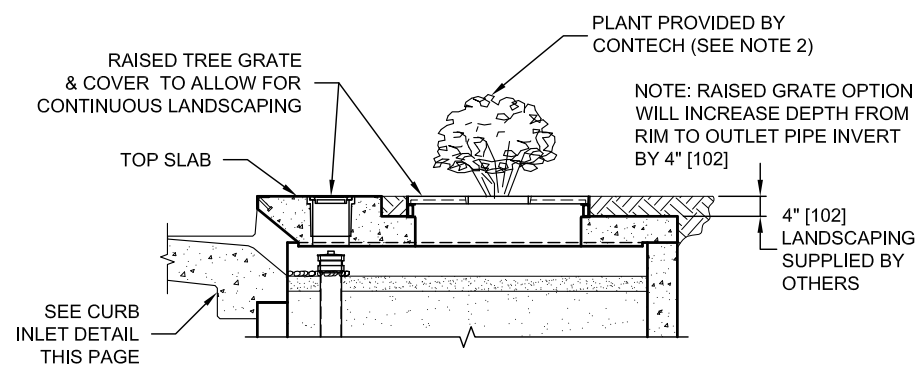
STRUCTURE ID	*		
SYSTEM TREATMENT CAPACITY (CFS / I/s)	*		
WATER QUALITY FLOW RATE (CFS / I/s)	*		
PEAK FLOW RATE (CFS / I/s)	*		
RETURN PERIOD OF PEAK FLOW (YRS)	*		
REQUIRED MEDIA INFILTRATION RATE	*		
PIPE DATA:	I.E.	MATERIAL	DIAMETER
OUTLET PIPE	*	SCH 40 PVC	4"
CURB OPENING ORIENTATION	*		
TOP OF CURB ELEVATION	*		
ANTI-FLOTATION BALLAST IF REQUIRED	WIDTH	HEIGHT	
	*	*	
NOTES/SPECIAL REQUIREMENTS:			
* PER ENGINEER OF RECORD			



SECTION A-A

SECTION B-B

CURB INLET DETAIL



GENERAL NOTES

- CONTECH TO PROVIDE ALL MATERIALS UNLESS NOTED OTHERWISE.
- PLANT, MULCH, AND DISSIPATION ROCK ARE SUPPLIED BY CONTECH AND DELIVERED AT TIME OF SYSTEM ACTIVATION. PLANT SELECTION SHALL BE DONE BY THE ENGINEER OF RECORD IN ACCORDANCE WITH THE PROJECT PLANS AND SPECIFICATIONS.
- DIMENSIONS MARKED WITH () ARE REFERENCE DIMENSIONS. ACTUAL DIMENSIONS MAY VARY.
- FOR SITE SPECIFIC DRAWINGS WITH DETAILED VAULT DIMENSIONS AND WEIGHTS, PLEASE CONTACT YOUR CONTECH REPRESENTATIVE. www.ContechES.com
- FILTERRA WATER QUALITY STRUCTURE SHALL BE IN ACCORDANCE WITH ALL DESIGN DATA AND INFORMATION CONTAINED IN THIS DRAWING.
- STRUCTURE DESIGNED FOR PEDESTRIAN LIVE LOAD WITH H5 (4,000 LBS.) WHEEL LOAD MOUNTING THE CURB AND ADJACENT HS-2 LIVE LOAD SURCHARGE ON THE WALLS ON THE STRUCTURE.
- FILTERRA STRUCTURE SHALL BE PRECAST CONCRETE CONFORMING TO ASTM C-857, ASTM C-918, AND ACI-318 LOAD FACTOR DESIGN METHOD.

INSTALLATION NOTES

- ANY SUB-BASE, BACKFILL DEPTH, AND/OR ANTI-FLOTATION PROVISIONS ARE SITE-SPECIFIC DESIGN CONSIDERATIONS AND SHALL BE SPECIFIED BY ENGINEER OF RECORD.
- CONTRACTOR TO PROVIDE EQUIPMENT WITH SUFFICIENT LIFTING AND REACH CAPACITY TO LIFT AND SET THE FILTERRA VAULT (LIFTING CLUTCHES PROVIDED). SPREADER BAR WITH SUFFICIENT CABLE IS REQUIRED FOR SAFETY AND REDUCTION OF DAMAGE TO CONCRETE STRUCTURE.
- CONTRACTOR TO INSTALL JOINT SEALANT BETWEEN ALL VAULT SECTIONS AND ASSEMBLE VAULT.
- CONTRACTOR TO PROVIDE AND INSTALL OUTLET PIPE. PVC COUPLING CAST-IN TO WALL FOR OUTLET PIPE CONNECTION.
- CONTRACTOR TO SUPPLY AND INSTALL INLET PROTECTION BAR IF REQUIRED BY LOCAL JURISDICTION.
- CONTRACTOR TO TAKE APPROPRIATE MEASURES TO PROTECT FILTERRA MEDIA BAY FROM CONSTRUCTION-RELATED EROSION RUNOFF.
- CONTECH IS RESPONSIBLE FOR ACTIVATION OF THE SYSTEM AND PLANTING OF THE PLANT THAT IS SPECIFIED. ACTIVATION ONLY OCCURS WHEN THE SITE IS FULLY STABILIZED, FINAL PAVEMENT INSTALLED AND SWEEP CLEAN OF CONSTRUCTION SEDIMENT.
- ALL FILTERRA UNITS MUST BE WATERED BY IRRIGATION LINES OR SPRINKLER SYSTEMS ON A REGULAR BASIS. EACH FILTERRA UNIT INCLUDES IRRIGATION HOLES FOR NEW OR EXISTING IRRIGATION LINES.



THIS PRODUCT MAY BE PROTECTED BY ONE OR MORE OF THE FOLLOWING U.S. PATENTS: 6,277,274; 6,569,321; 7,625,486; 7,420,911; 7,833,412. RELATED FOREIGN PATENTS.

CONTECH
ENGINEERED SOLUTIONS LLC

www.ContechES.com

9025 Centre Pointe Dr., Suite 400, West Chester, OH 45069

800-338-1122 513-645-7000 513-645-7993 FAX

FILTERRA 6x4 OFFLINE STANDARD
LONG SIDE INLET
MODEL: FT0604