

**LANDSCAPE NOTES**

**GENERAL:**

1. SAVE EXISTING TREES AS SHOWN. DO NOT CUT OR CLEAR ANY VEGETATION BEYOND THE CONSTRUCTION LIMIT.
2. ALL PLANT MATERIALS INSTALLED ARE TO MEET THE SPECIFICATIONS OF THE "AMERICAN STANDARDS FOR NURSERY STOCK" BY THE AMERICAN ASSOCIATION OF NURSERYMEN.
3. ALL PROPOSED PLANT LOCATIONS SHALL BE AS SHOWN ON PLANS. CONTRACTOR SHALL VERIFY LOCATION OF ALL UTILITIES PRIOR TO PLANTING AND WILL NOTIFY OWNER'S REPRESENTATIVE IN THE EVENT OF CONFLICTS.
4. PLANT LOCATIONS ARE TO BE SCALED FROM THE LANDSCAPE PLAN UNLESS NOTED OTHERWISE.
5. NO PLANT MATERIAL SHALL BE INSTALLED UNTIL FINAL GRADING AND CONSTRUCTION HAS BEEN COMPLETED IN THE IMMEDIATE AREA.
6. FINAL QUANTITY FOR EACH PLANT TYPE IS NOTED IN THE PLANT LIST. THIS NUMBER SHALL TAKE PRECEDENCE IN THE CASE OF ANY DISCREPANCY BETWEEN QUANTITIES SHOWN IN THE LIST AND ON THE PLAN.
7. ANY PROPOSED SUBSTITUTIONS MUST BE APPROVED BY THE OWNER OR THE OWNER'S REPRESENTATIVE.
8. ALL NON-LANDSCAPED DISTURBED AREAS TO BE LOAMED AND SEEDED.

**MAINTENANCE:**

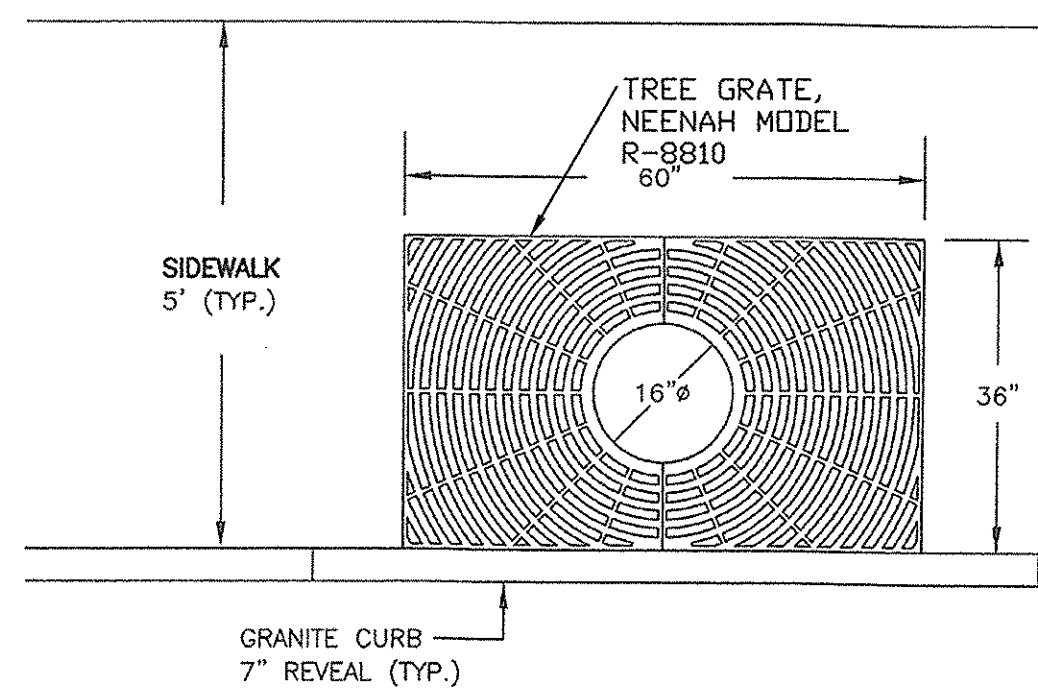
1. LAWN: SHALL BE WATERED, FERTILIZED AND MOUN ON A REGULAR BASIS ACCORDING TO SEASON AND RAINFALL, TO PRODUCE A STRONG TURF OF 90% MIN. COVERAGE WITHIN THE FIRST YEAR, FREE FROM SIZABLE THIN OR BARE SPOTS. REGRADING AND RESEEDING WILL BE PERFORMED ON BARE SPOTS UNTIL COVERAGE IS COMPLETE.
2. TREES & SHRUBS: THE ESTABLISHMENT PERIOD SHALL BE TWO CALENDAR YEARS FROM THE DATE OF FINAL ACCEPTANCE. DURING THE ESTABLISHMENT PERIOD THE OWNER OR OWNER'S CONTRACTOR SHALL WATER, CULTIVATE AND PRUNE AS REQUIRED TO MAINTAIN A HEALTHY GROWING CONDITION.
3. AT THE END OF THE ESTABLISHMENT PERIOD AND UPON SUBSEQUENT ANNUAL INSPECTIONS, PLANTS WHICH HAVE DIED OR FAILED TO THRIVE SHALL BE REPLACED WITH EQUIVALENT SIZE AND SPECIES. AFTER THE CONTRACTOR'S GUARANTEE PERIOD HAS ENDED, IT IS THE OWNER'S RESPONSIBILITY TO MAINTAIN AND REPLACE PLANTINGS.
4. TREES, SHRUBS AND LAWN WHICH ARE NOT IRRIGATED WITH AN AUTOMATIC SPRINKLER OR DRIP SYSTEM SHALL BE THOROUGHLY WATERED ON A REGULAR BASIS DURING PERIODS OF BELOW AVERAGE RAINFALL. SOIL SHOULD BE SAMPLED AT A DEPTH OF 12" AND IF DRY, WATER TO DEPTH OF 24".
5. MULCH IS TO BE MAINTAINED AT A DEPTH TO COMPLETELY COVER THE SOIL AND TO PRESERVE MOISTURE AND MINIMIZE WEEDS.
6. TREES, SHRUBS AND LAWN SHALL BE FERTILIZED ANNUALLY AND TREATED WITH INSECTICIDES AND/OR FUNGICIDES AS REQUIRED FOR CONTINUED HEALTHY GROWTH.
7. SUCKERS, WEEDS, AND DEAD WOOD SHALL BE REMOVED ON A SEASONAL BASIS, AND SHRUBS SHALL BE PRUNED TWICE A YEAR ACCORDING TO THE REQUIREMENTS OF EACH SPECIES (I.E. SOME SPECIES SHOULD NOT BE PRUNED AT ALL). SHRUBS SHALL NOT BE PRUNED INTO INDIVIDUALS BUT ALLOWED TO GROW INTO A MASS.
8. WHERE TREES ARE LOCATED NEAR SIDEWALKS OR PARKING LOTS, THE CANOPY SHALL BE LIMBED UP TO PROMOTE SAFE CLEARANCE TO 8' ABOVE GRADE.
9. LAWN AREAS SHALL BE MOUN AS OFTEN AS NECESSARY TO KEEP LAWN TO A 2 1/2 - 3" HEIGHT, AND AERATED ON A SEASONAL BASIS.
10. BEDS AND LAWN EDGES SHALL BE REGULARLY TRIMMED AND EDGED.
11. PERENNIAL AND ANNUAL BEDS SHALL BE DESIGNED, PLANTED AND MAINTAINED FOR SEASONAL COLOR AND INTEREST. ANNUALS MAY BE INCORPORATED TO A MAXIMUM LIMIT OF 25% OF THE BED AREA. MAINTAINED BEDS FROM MAY 15 THROUGH NOVEMBER 15, PERENNIAL BEDS SHALL BE WATERED AS REQUIRED FOR HEALTHY PLANT GROWTH, AND WEEDED AND DEADHEADED ON A MONTHLY BASIS.

**NOTES:**

16" EXPANDABLE TREE OPENING. 0.25" SLOT OPENINGS.  
SIDEWALK MATERIAL PER CITY SIDEWALK MATERIAL POLICY.

WHEN THE TREE GRATE IS INSTALLED IN A CONCRETE SIDEWALK, A NOTCH MUST BE INSTALLED ALONG THE EDGE TO HOLD THE GRATE. WHEN INSTALLED IN A BRICK SIDEWALK IT REQUIRES A FRAME TO BE INSTALLED TO HOLD THE GRATE IN PLACE.

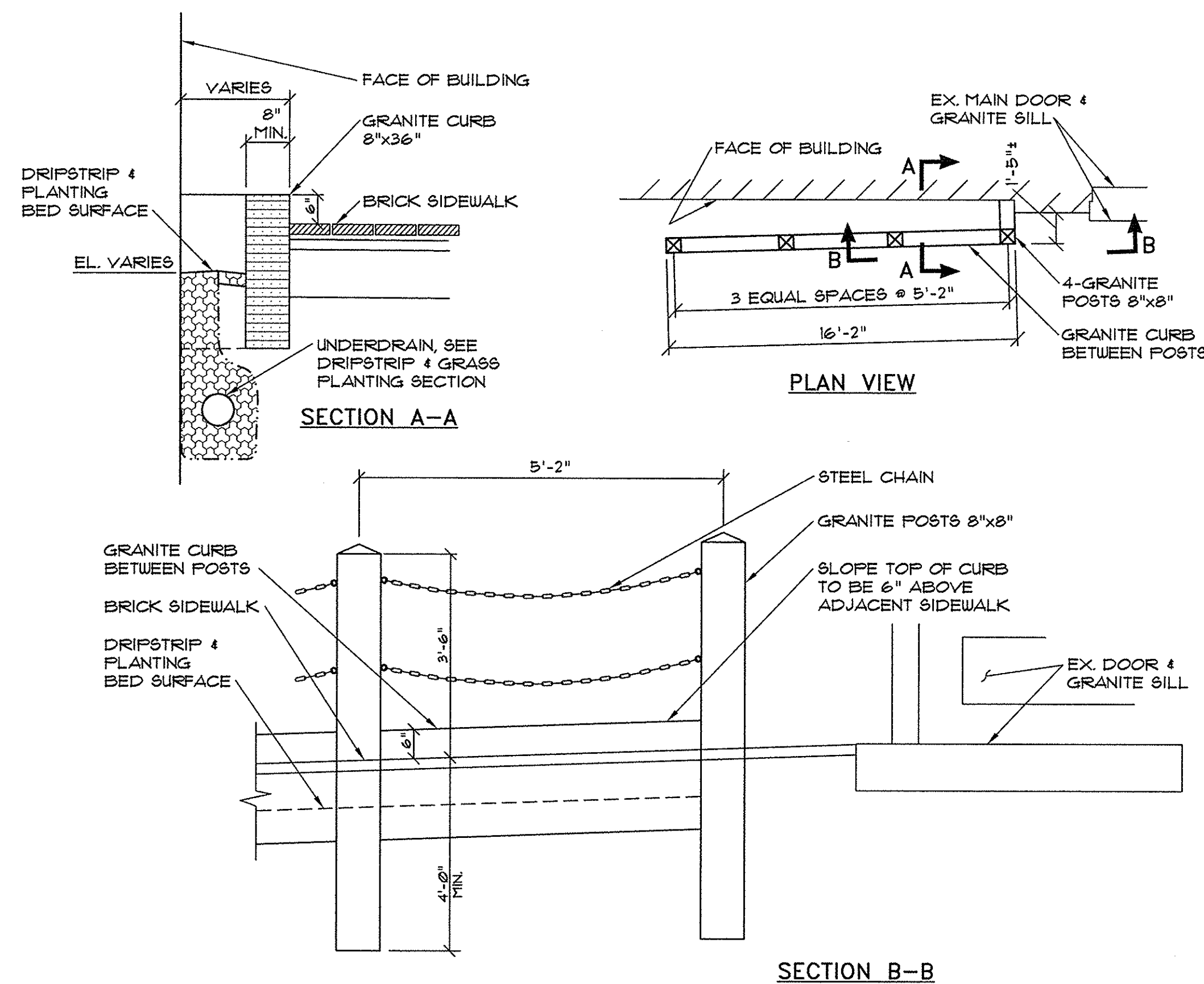
ALTERNATE: POROUS PAVEMENT, KBI FLEXI-PAVE (WWW.KBIUS.COM)



PLAN VIEW

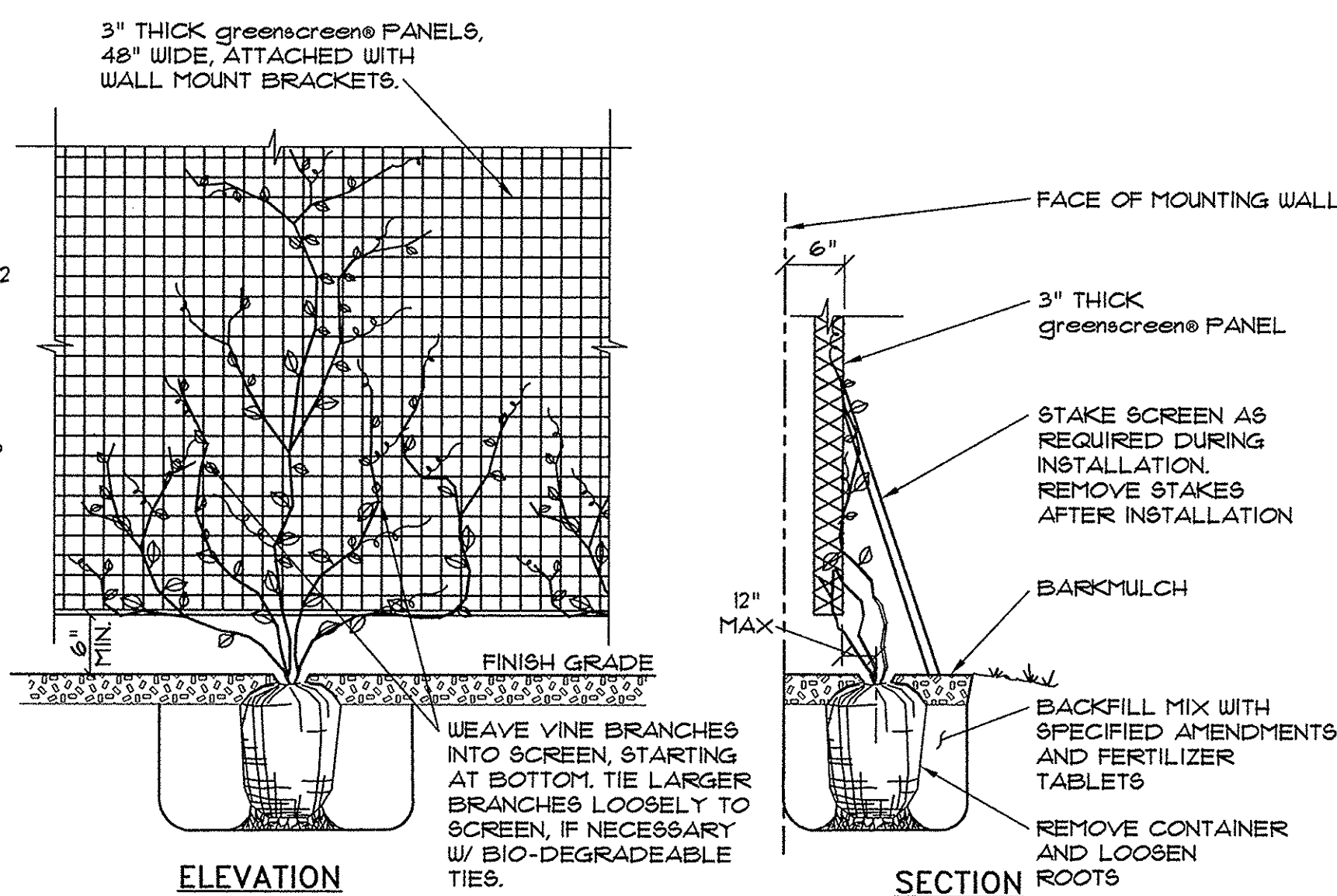
**4 EXPANDABLE TREE GRATE (IV-4A)**

NOT TO SCALE



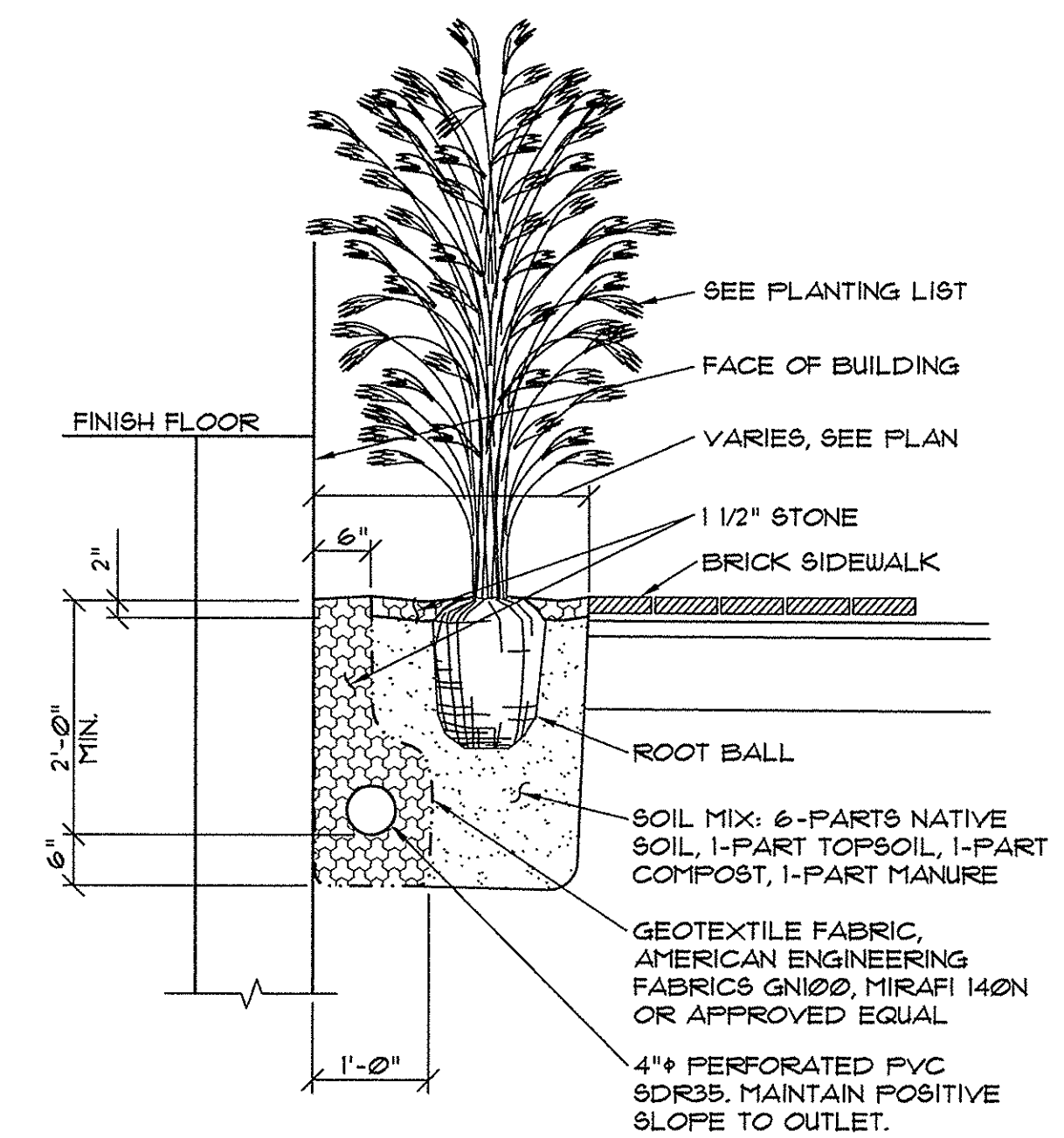
**2 GRANITE CURB & POST DETAILS**

NOT TO SCALE



**3 greenscreen® VINE PLANTING DETAIL**

NOT TO SCALE



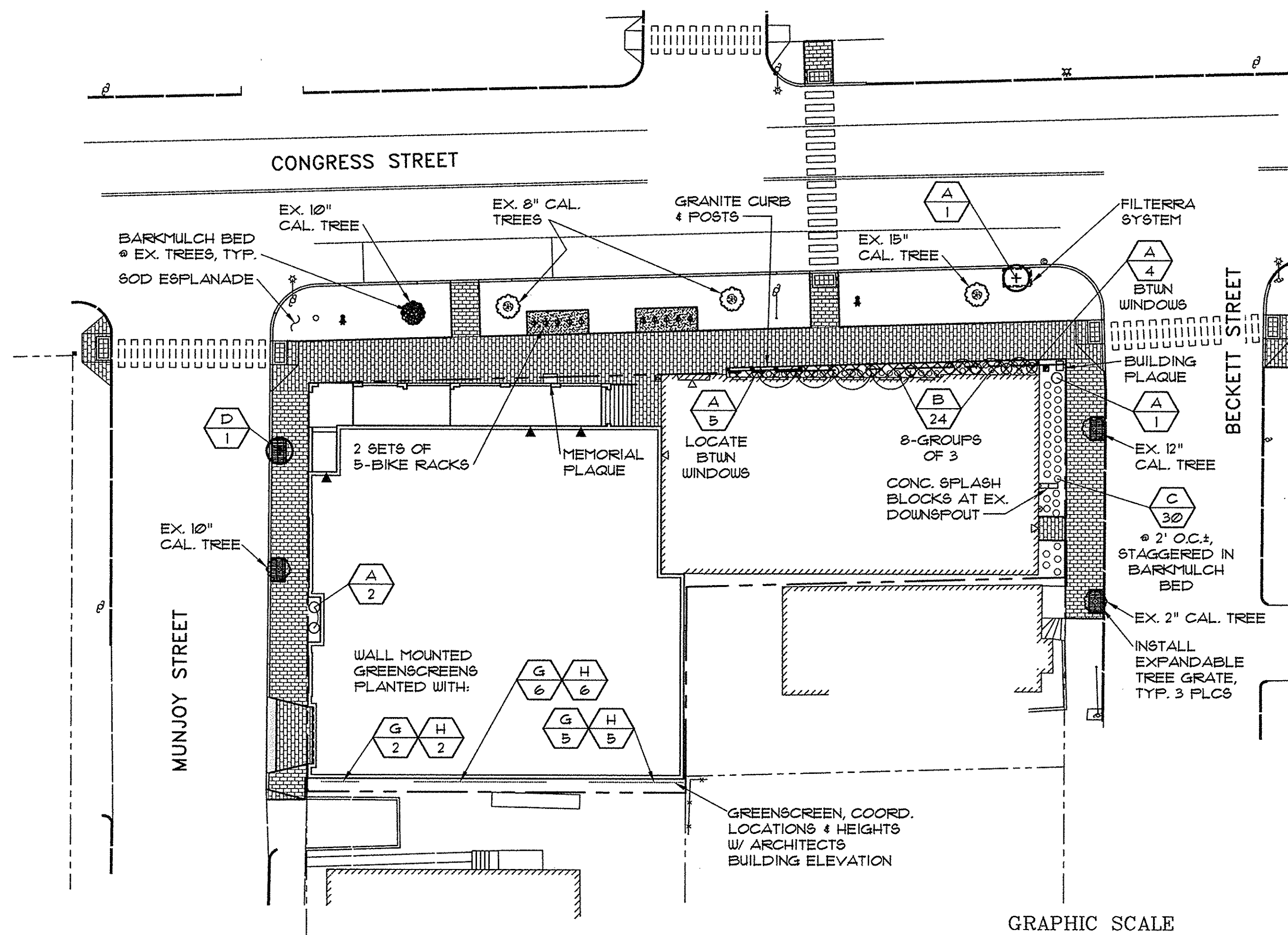
**1 DRIPSTRIP & GRASS PLANTING SECTION**

NOT TO SCALE

**PLANT LIST**

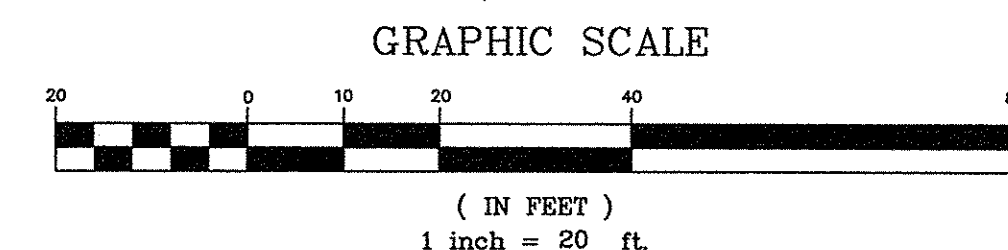
SYMBOL QUANTITY

SYMBOL	COMMON NAME/BOTANICAL NAME	SIZE	QUANTITY	ROOT
A	MISCANTHUS / Miscanthus Autumn Anthem	1 gal.	13	FOTTED
B	FESCUE / Festuca glauca Boulder Blue	1 gal.	24	FOTTED
C	HAKONECHLOA / Hakonechloa macra All Gold	1 gal.	30	FOTTED
D	ARMSTRONG MAPLE / acer freemanii 'Armstrong'	2 1/2" cal.	1	B4B
G	CLEMATIS VARIETIES / SWEET AUTUMN / paniculata	--	13	FOTTED
H	HONEYSUCKLE VINE / lonicera x heckrottii 'goldflame'	--	13	FOTTED

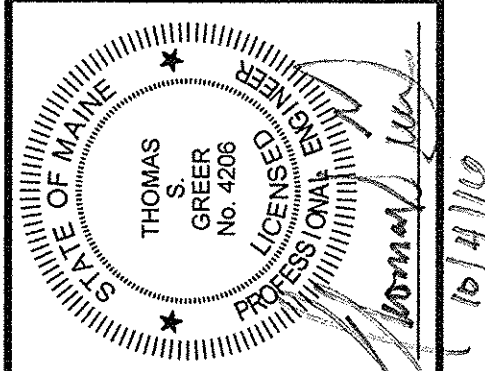


**LANDSCAPE PLAN**

FOR SITE PLAN LEGEND SEE SHEET C1.3



**PINKHAM & GREER CIVIL ENGINEERS**  
29 WINDY HILL DRIVE, SUITE 201, PORTLAND, ME 04103  
TEL: 207.761.5532 FAX: 207.761.5426



REV.	DATE	DESCRIPTION

SCALE: AS SHOWN  
DATE: OCTOBER 4, 2016  
PROJECT: 16107

DRN BY: JDC  
DESIGN BY: TSG  
CHK BY: JYL

ST. LAWRENCE ARTS ADDITION  
76 CONGRESS STREET  
PORTLAND, ME

FRIENDS OF ST. LAWRENCE CHURCH  
76 CONGRESS STREET  
PORTLAND, MAINE 04101

**LANDSCAPE PLAN, NOTES AND DETAILS**

**C1.5**  
MAP/LOT/BLOCK 3/L/1