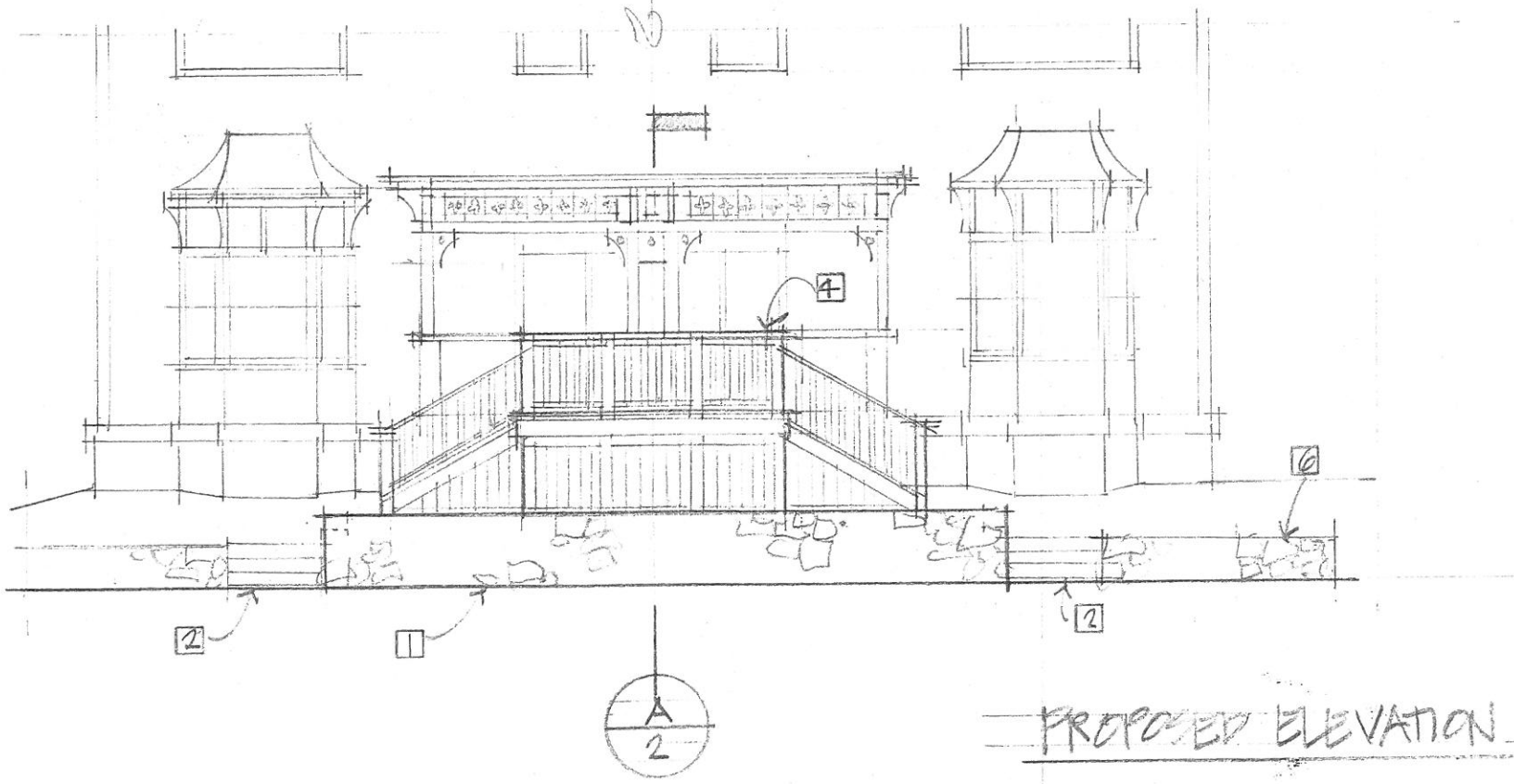
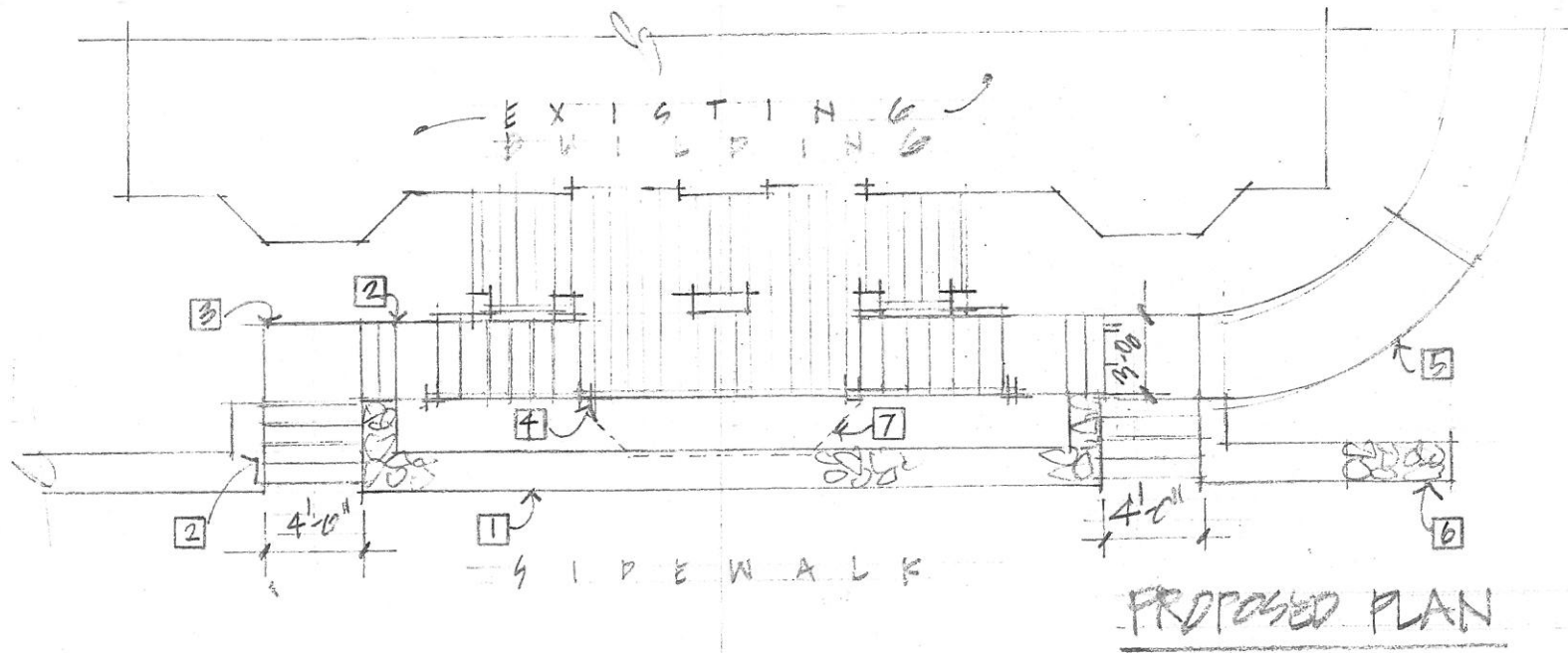


SUPE OF WORK KEYNOTES

- 1 INFILL AND RAISE EXISTING STONE WALL MATCH CURRENT PROFILE AND TREATMENT
- 2 NEW GRANITE STEPS
- 3 NEW STONE LANDING
- 4 NEW WOOD LANDING AND STAIRS TO EXISTING PORCH
- 5 MODIFY WALK TO ACCOMMODATE NEW ENTRY CONFIGURATION
- 6 INFILL STONE WALL @ REMOVED CONCRETE STEPS - MATCH EXISTING
- 7 BID OPTION: EXTEND LANDING TO FACE OF STONE WALL, CORNERS RETURN @ 45° ANGLE TO ECHO BAY WINDOWS

GENERAL NOTES

- A. REMOVE EXISTING WOOD AND CONCRETE STEPS, BALUSTERS, POSTS, AND RAILS
- B. REMOVE EXISTING LANDSCAPING TO ACCOMMODATE NEW WORK
- C. MATCH EXISTING FINISHES



ENTRY PORCH ALTERATIONS - 9/8 EASTERN PROM - PORTLAND, MAINE

12 AUG 2016



SCALE: 1/8" = 1'-0"