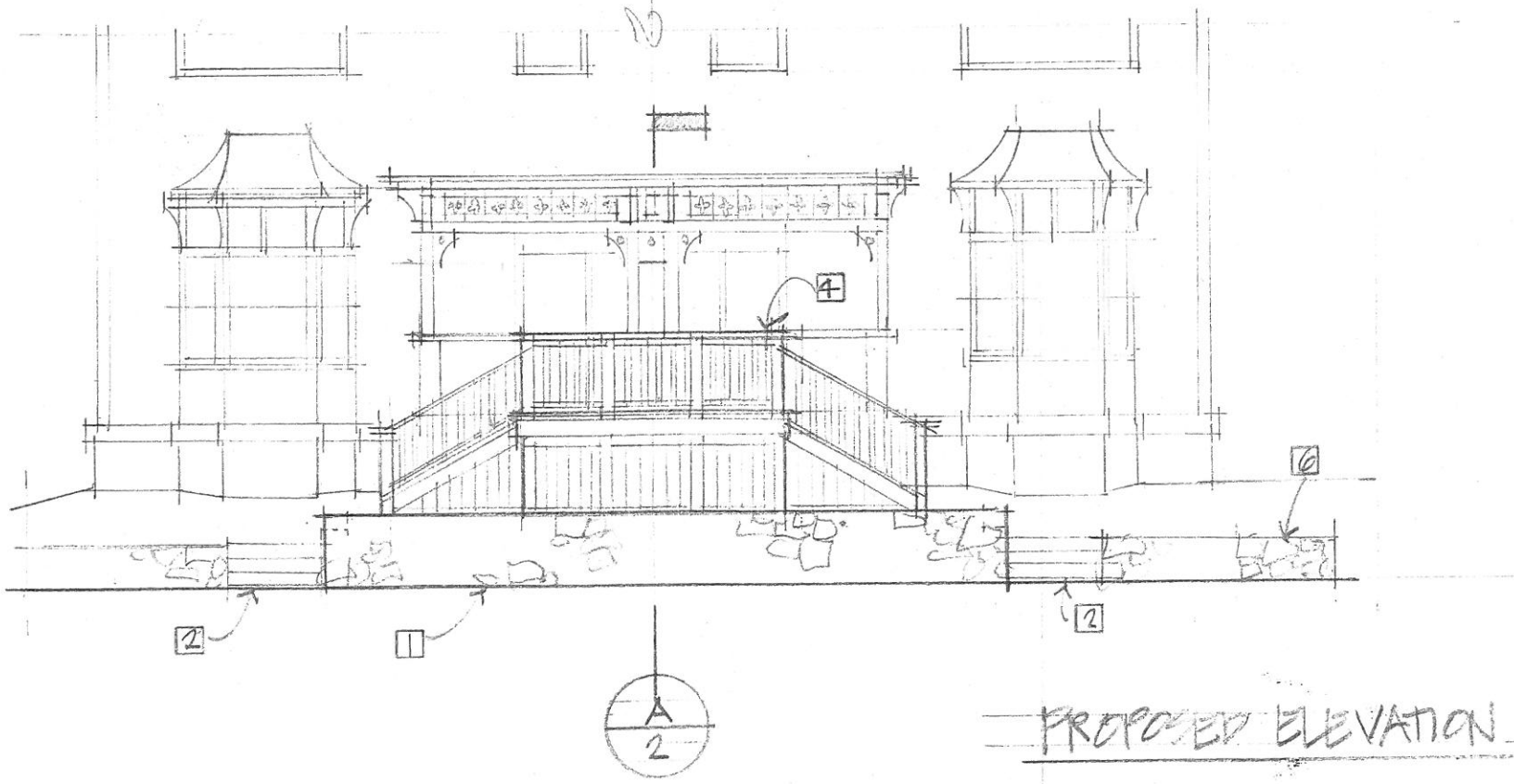
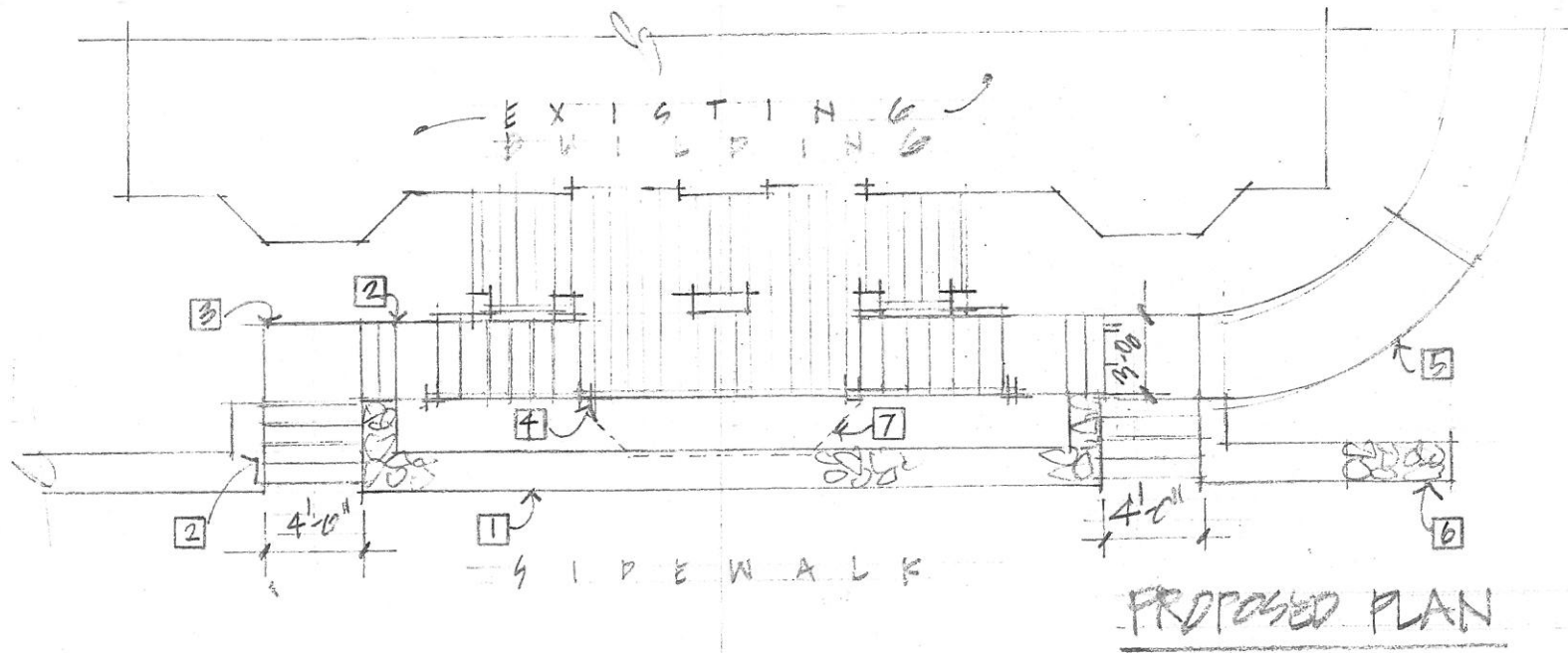


SCOPE OF WORK KEYNOTES

- 1 INFILL AND RAISE EXISTING STONE WALL MATCH CURRENT PROFILE AND TREATMENT
- 2 NEW GRANITE STEPS
- 3 NEW STONE LANDING
- 4 NEW WOOD LANDING AND STAIRS TO EXISTING PORCH
- 5 MODIFY WALK TO ACCOMMODATE NEW ENTRY CONFIGURATION
- 6 INFILL STONE WALL @ REMOVED CONCRETE STEPS - MATCH EXISTING
- 7 BID OPTION: EXTEND LANDING TO FACE OF STONE WALL, CORNERS RETURN @ 45° ANGLE TO ECHO BAY WINDOWS

GENERAL NOTES

- A. REMOVE EXISTING WOOD AND CONCRETE STEPS, BALUSTERS, POSTS, AND RAILS
- B. REMOVE EXISTING LANDSCAPING TO ACCOMMODATE NEW WORK
- C. MATCH EXISTING FINISHES



ENTRY PORCH ALTERATIONS · 910 EASTERN PROM · PORTLAND, MAINE

12 AUG 2016



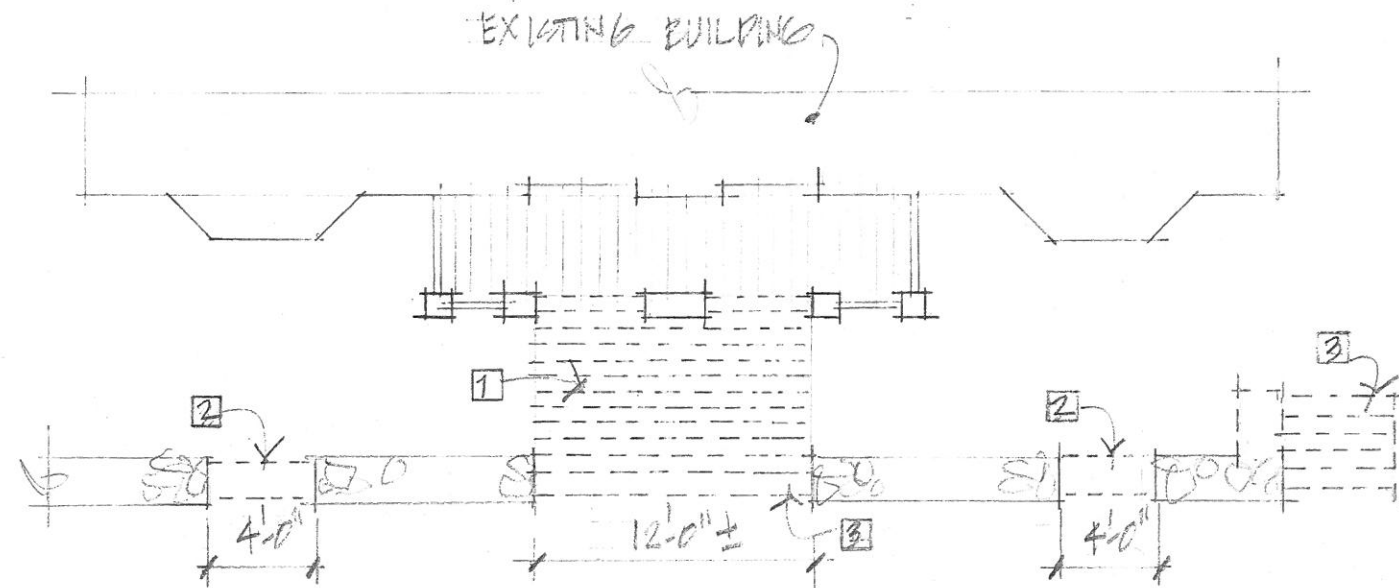
SCALE: 1/8" = 1'-0"

REMOVALS KEYNOTES

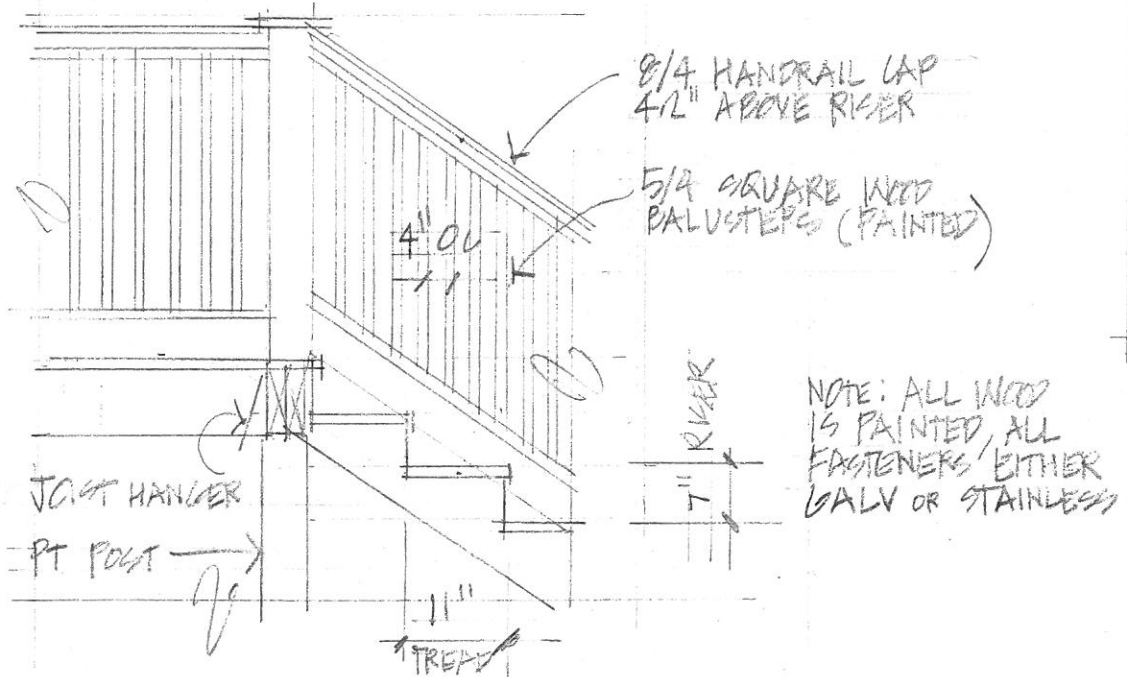
- 1 REMOVE EXISTING WOODEN STEPS INCLUDING HANDRAILS AND SKIRTING
- 2 REMOVE PORTION OF EXISTING STONE RETAINING WALL
- 3 REMOVE EXISTING CONCRETE STEPS

REMOVALS GENERAL NOTES

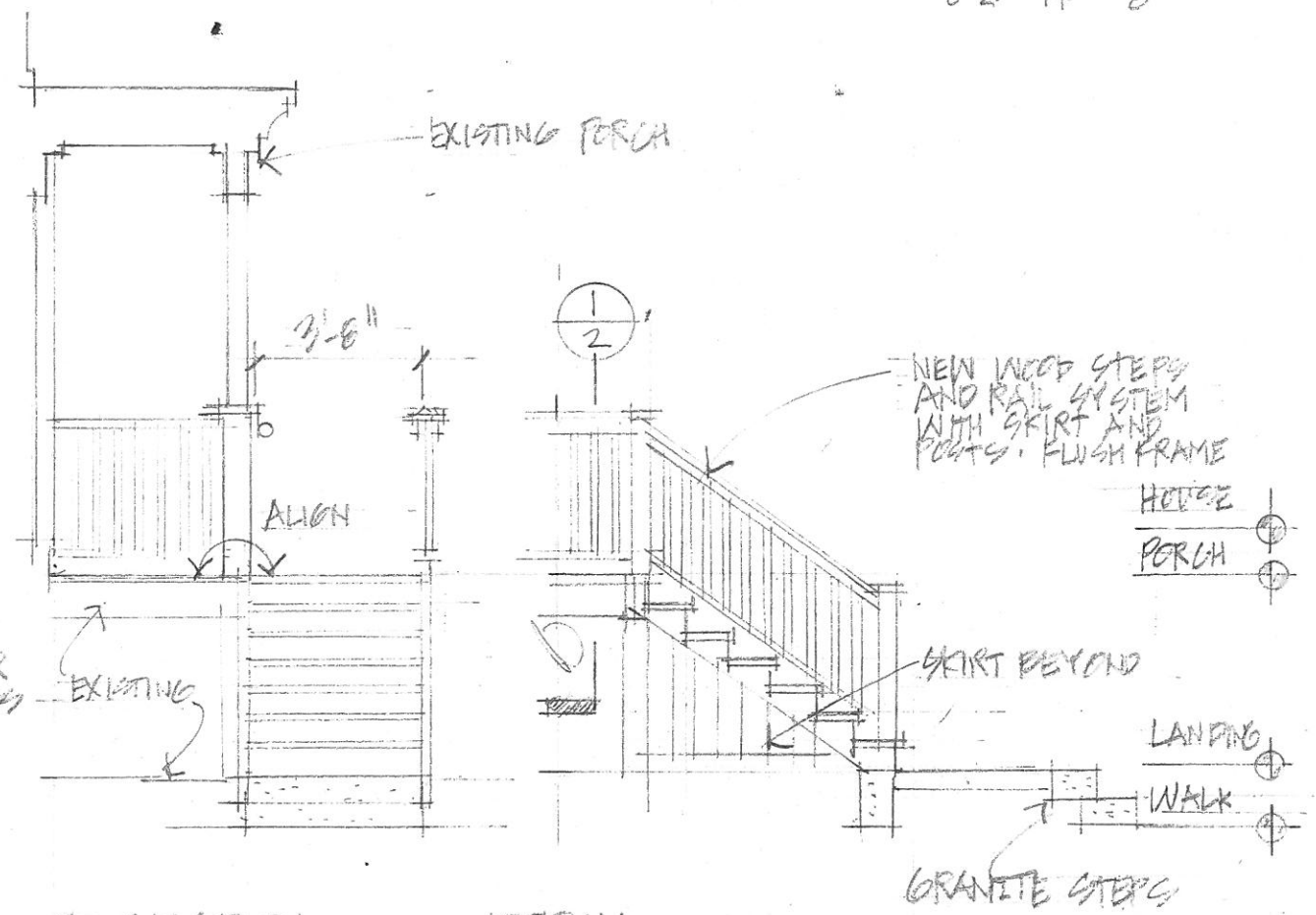
- 1. PROTECT EXISTING CONDITIONS FROM DAMAGE. REPAIR / REFINISH TO MATCH
- 2. REMOVE EXISTING LANDSCAPING TO ACCOMMODATE NEW WORK. COORDINATE RESTORED PLANTINGS W/ OWNER



REMOVALS PLAN
1/8" = 1'-0"



I. DETAIL @ RAIL / STEPS
1/2" = 1'-0"



A. SECTION THROUGH PORCH
1/4" = 1'-0"

ENTRY PORCH ALTERATIONS - 0/8 EASTERN PROM. PORTLAND, MAINE

SCALE AS NOTED 21 AUG 2016