

1 FLOOR PLAN #38A
3/16" = 1'-0"

PROPERTY OF

FMC CAD *Engineering & Construction*

23 Main St.
Portland, ME 04101
TEL: 781-853-1111
WWW.FMCCAD.COM

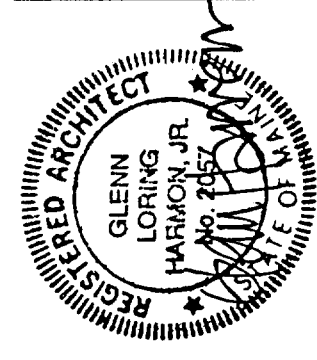
NELSON RESIDENCE
38A EASTERN PROMENADE
PORTLAND, MAINE

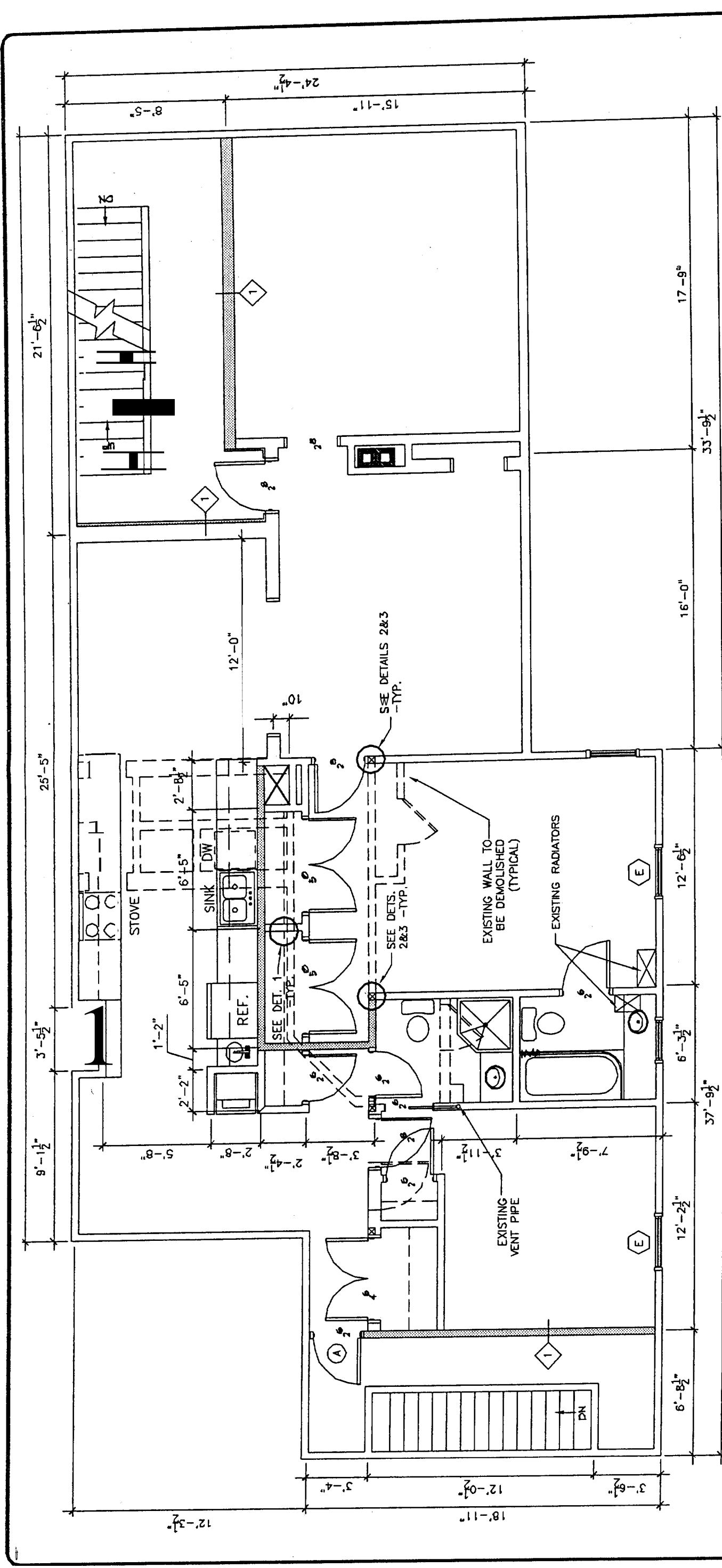
- 1 ONE-UR PARTITION
- A 45 MINUTE DOOR
- E EGRESS WINDOW
- EXIST. PARTITION TO REMAIN
- PARTITION TO BE REMOVED
- NEW PARTITION

LVL HEADER - SEE DETAIL SHEET

4x4 SOLID WOOD POSTS @ CORNERS UNDER LVL HEADER BEARING AREAS

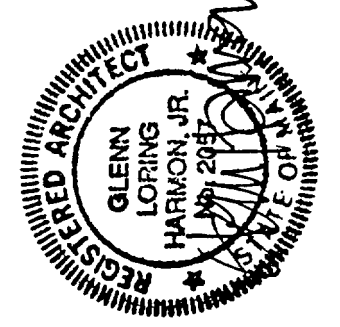
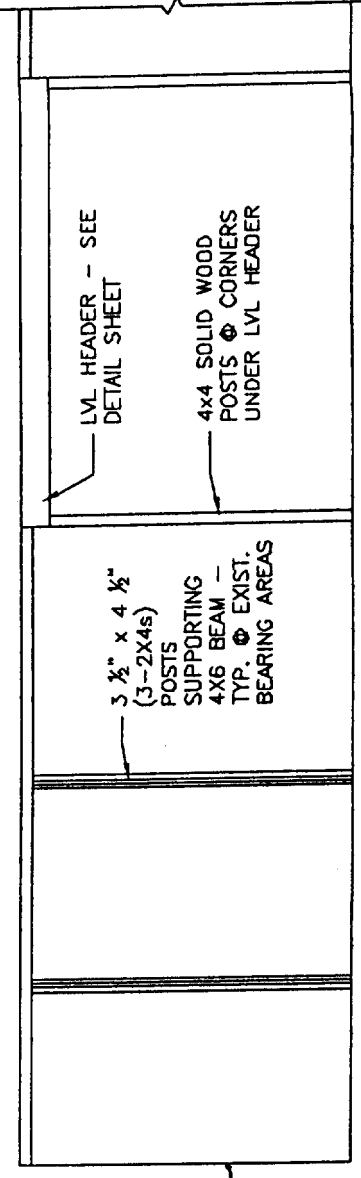
3 1/2" x 4 1/2" (3-2x4s) SUPPORTING 4x6 BEAM - TYP. @ EXIST. BEARING AREAS





1 FLOOR PLAN #38B
3/16" = 1'-0"

- 1 ONE-HOUR PARTITION
- (A) 45 MINUTE DOOR
- (E) EGRESS WINDOW
- EXIST. PARTITION TO REMAIN
- EXIST. PARTITION TO BE REMOVED
- ▨ NEW PARTITION



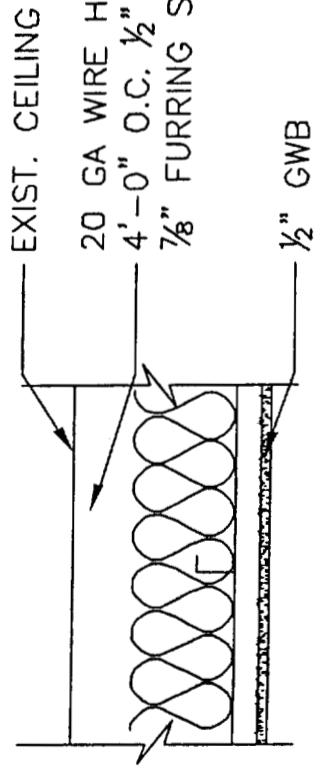
PROPERTY OF

FMS CADD Engineering & Construction
 20 Village St.
 Portland, Maine 04108
 207-771-0000 Fax: 207-774-8118
 E-mail: fms@fmscadd.com

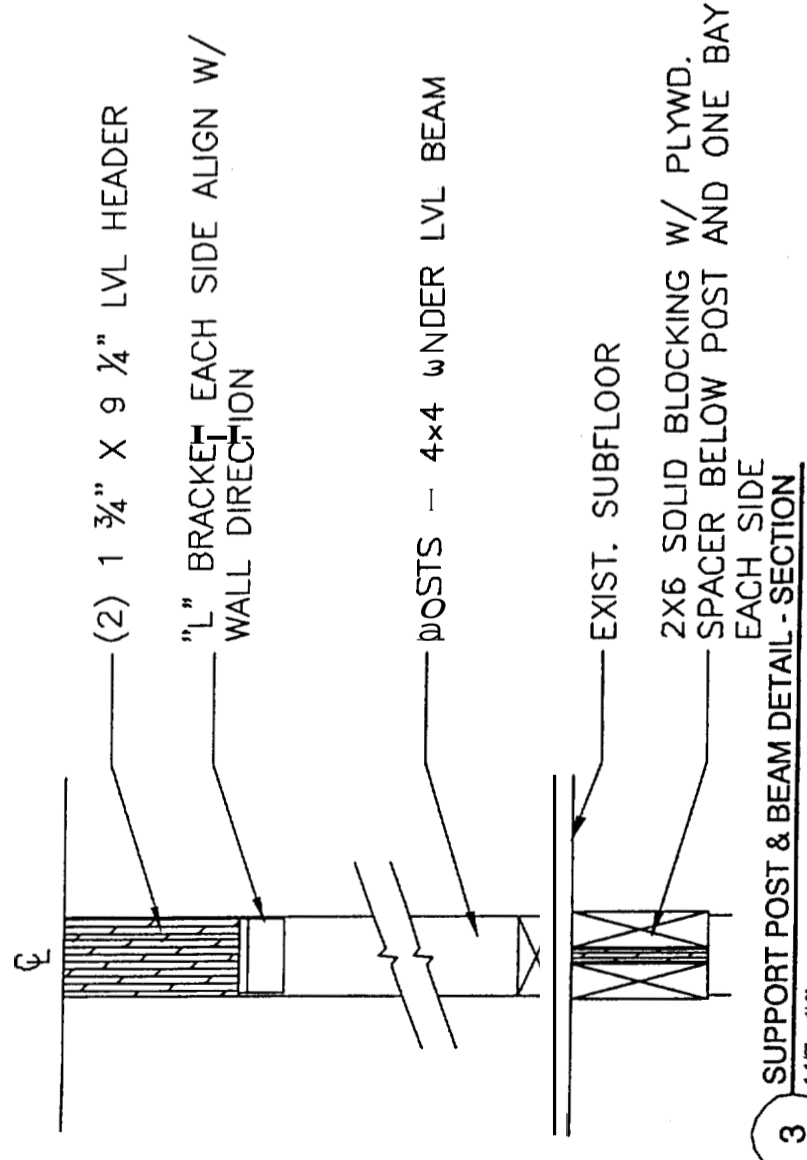
RESIDENCE
 388 EASTERN PROMENADE
 PORTLAND, MAINE

GENERAL NOTES

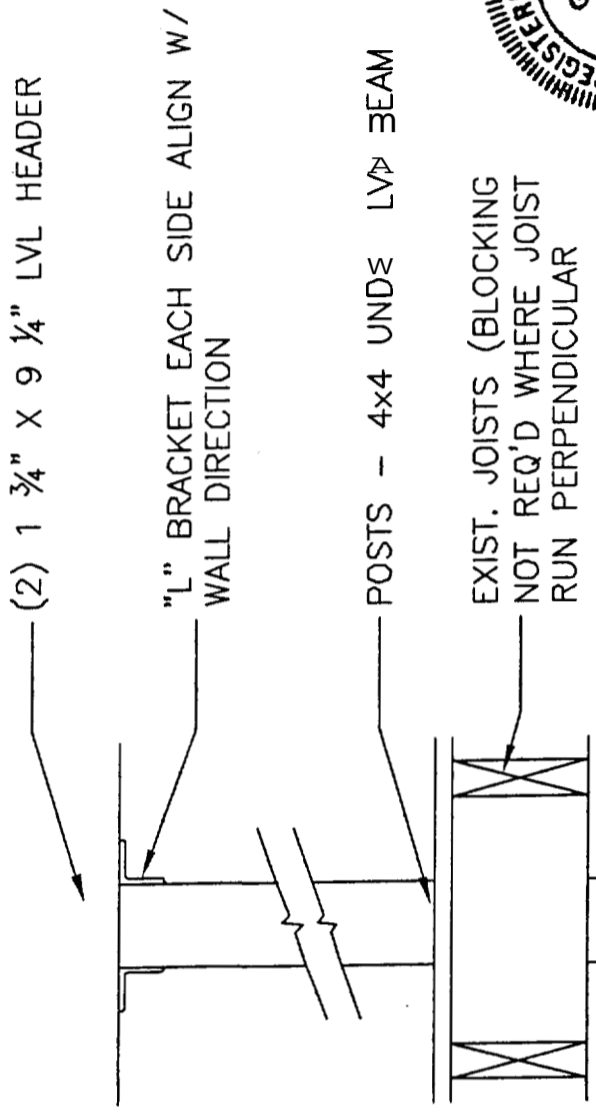
1. PATCH AND REPAIR EXISTING PLASTER AS REQUIRED FOR PAINTED FINISH - CARRY SKIM COAT TO NEAREST WALL INTERSECTION OR INSIDE CORNER
2. FINISH NEW GWB W/THREE (3) COATS JOINT COMPOUND FOR PAINTED FINISH
3. ALL INTERIOR WALLS, CEILINGS AND TRIM TO BE PRIMED AND PAINTED (2 COATS FINISH)
4. HARDWOOD FLOORS TO BE REFINISHED
5. COMPLY WITH BOCA 1999 FOR RATINGS
6. GYPSUM BOARD: TYPE X FC @ RATED PARTITIONS AND ASSEMBLIES (WALL TYPE 1)
7. EGRESS WINDOWS IN EACH BEDROOM 5.7 SF CLEAR OPENING



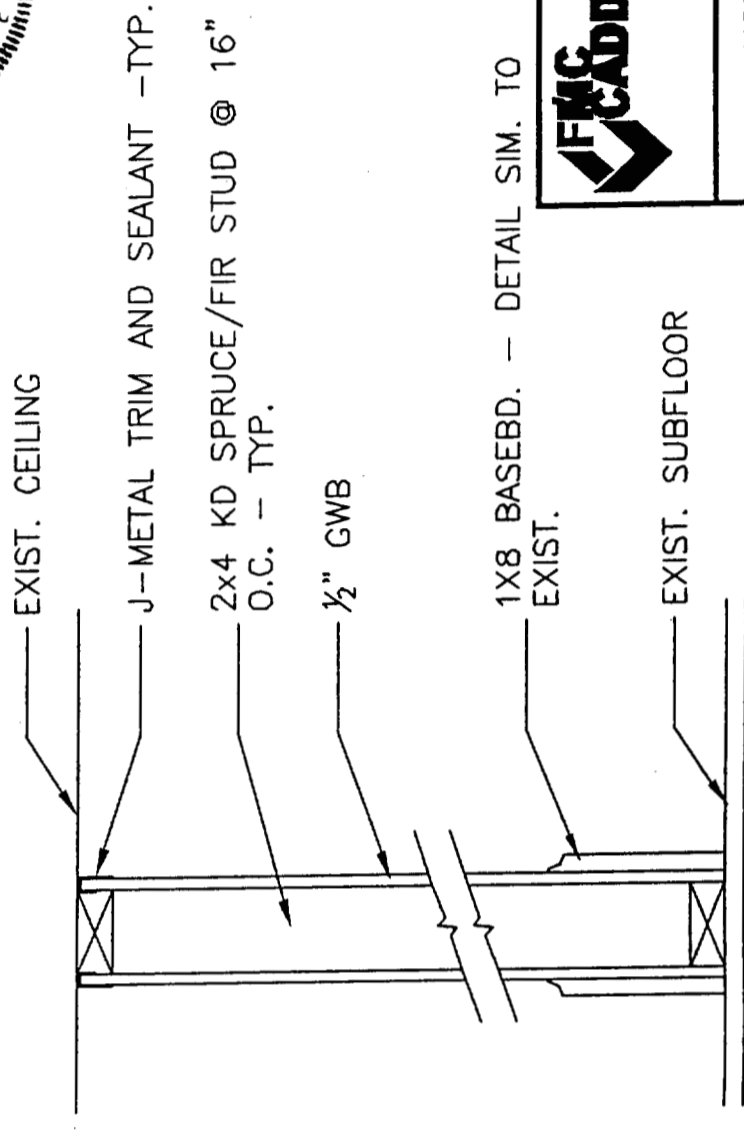
4 SUSPENDED GYPSUM BOARD CEILING DETAIL
1 1/2" = 1'-0"



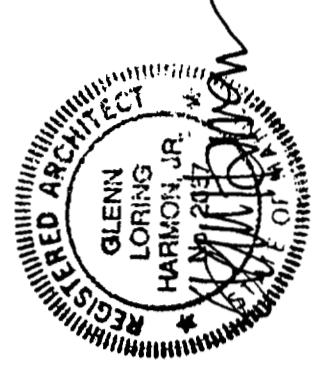
3 SUPPORT POST & BEAM DETAIL - SECTION
1 1/2" = 1'-0"



2 SUPPORT POST & BEAM DETAIL - ELEVATION
1 1/2" = 1'-0"



1 NEW LOAD-BEARING PARTITION DETAIL
1 1/2" = 1'-0"



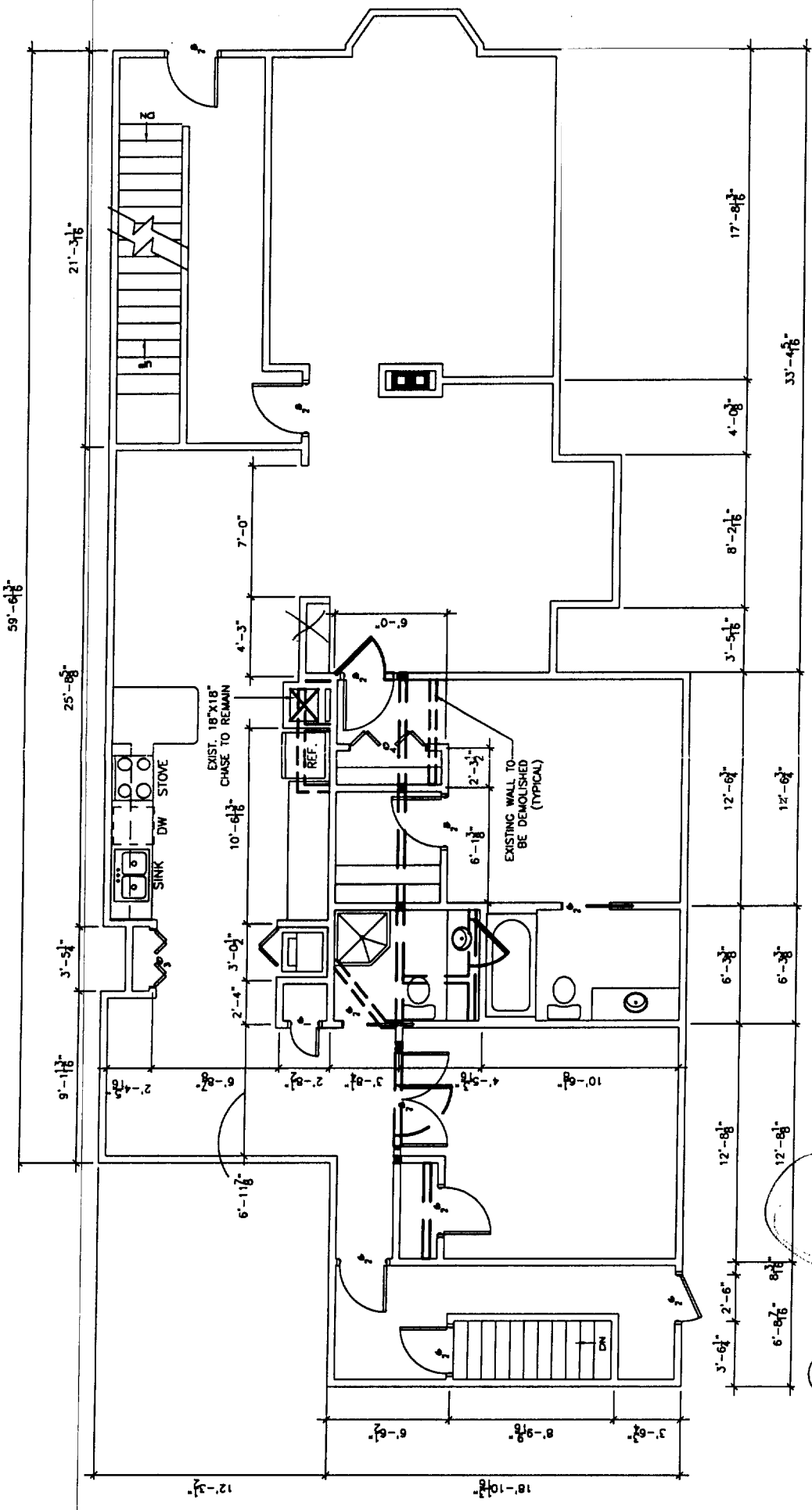
PROPERTY OF

FM/CADD Engineering & Construction
 27 Middle St.
 Portland, Maine 04108
 TEL: 774-2111 FAX: 774-6815
 WWW: www.fmcadd.com

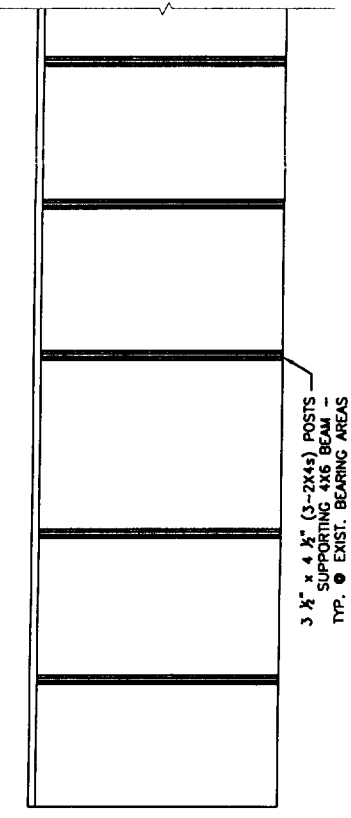
RESIDENCES
 38A & B EASTERN PROMENADE
 PORTLAND, MAINE

Proposed

OFFICE OF BUILDING CONTROL
 100 CITY HALL PLAZA
 APR 27 2004
 PERMITS



1 FLOOR PLAN #38A
 1/8" = 1'-0"



38A & 38B
 2x4 16" OC walls framing
 1/2" drywall finished for part
 re finished hardwood floors

-Existing beams removed
 -proposed