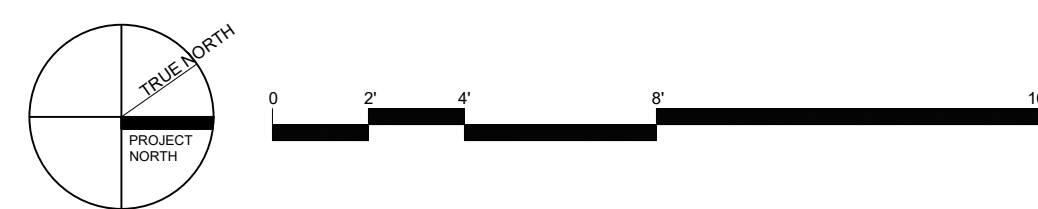
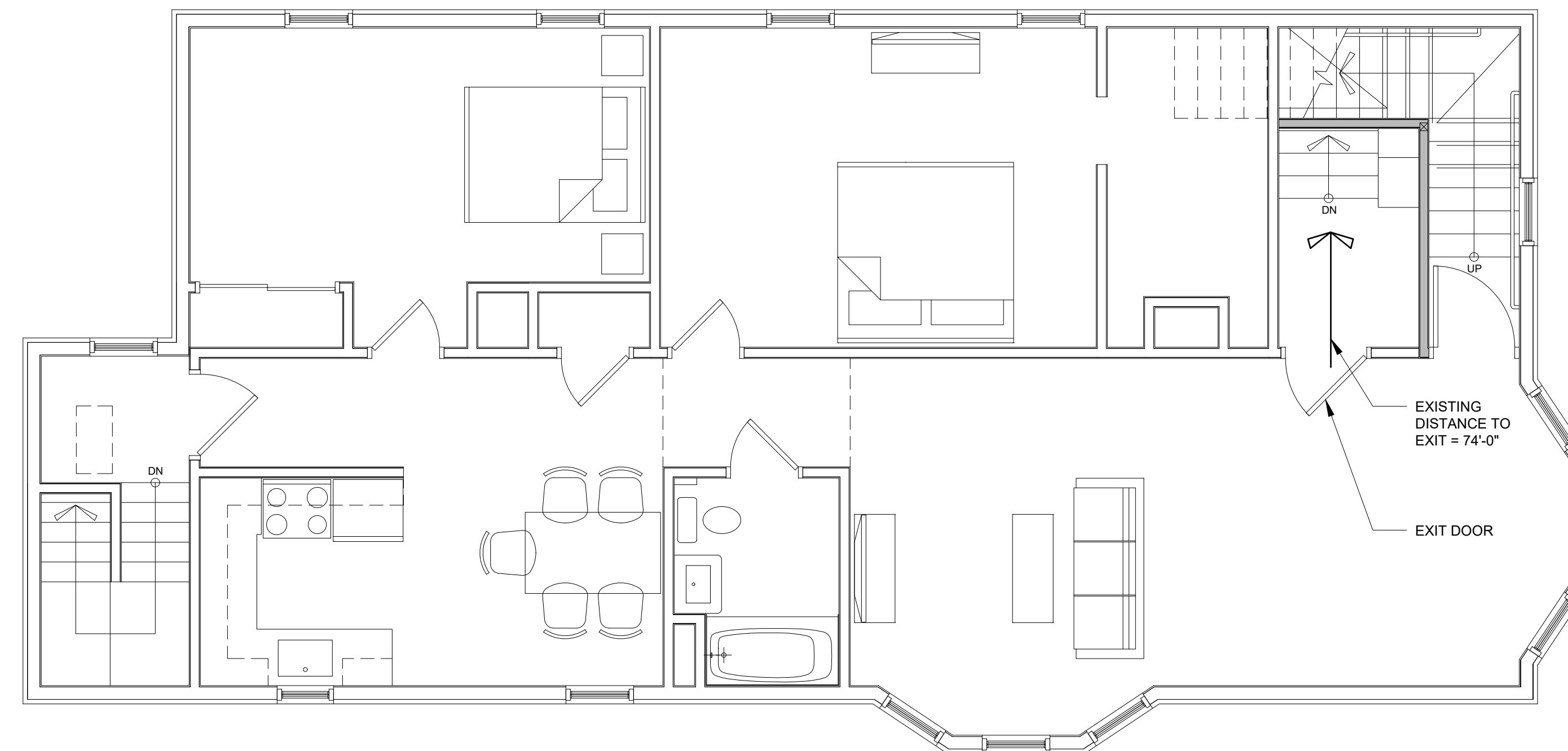


1 ROOF PLAN
1/8" = 1'-0"



2 THIRD FLOOR PLAN
1/8" = 1'-0"

© 2017 RYAN SENATORE ARCHITECTURE

ROOF DECK ADDITION
42 VESPER STREET
PORTLAND, MAINE



RYAN SENATORE
ARCHITECTURE
565 CONGRESS STREET
PORTLAND, MAINE 04101
207-650-6414
senatorearchitecture.com

CONSULTANTS:

STRUCTURAL:
Structural Integrity
77 Oak Street
Portland, ME 04101
207-774-4614

REVISIONS:

△ REVISED - 06/26/17

DATE: 13 APRIL 2017

PROJECT No. 1703

DRAWN BY: RRT

CHECKED BY: RJS

SCALE: AS NOTED

SHEET TITLE:
CODE REVIEW
PLAN

G1-1