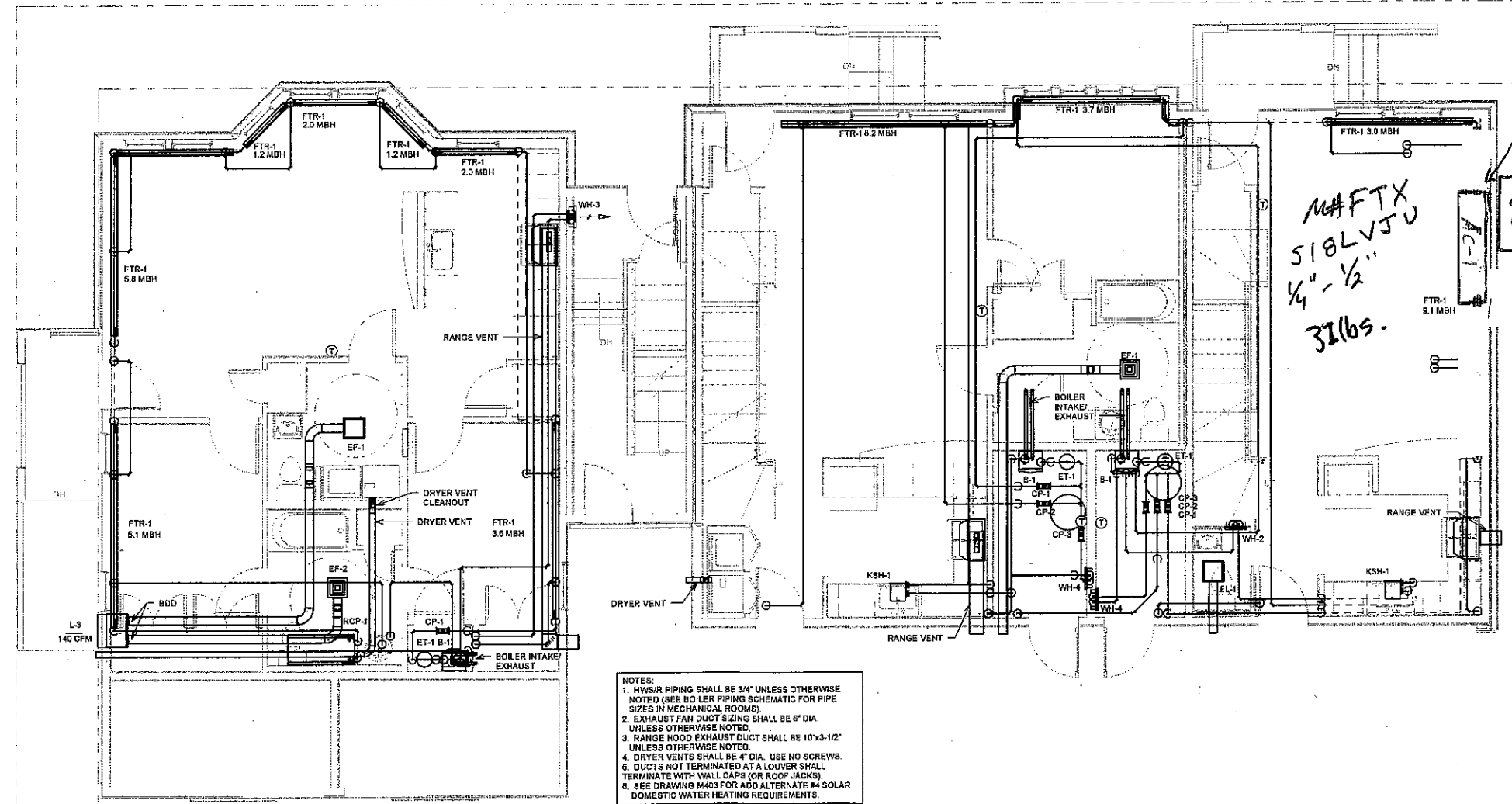


NOTE:  
Buildings B, C & D are similar to Building A, refer to Architectural drawings for more information.

Unit L  
Bldg. C



M#FTX  
518LVJU  
1/4" - 1/2"  
32lbs.

Condensate drain  
to outside

M#MXS32GVJU  
168 lbs.

1 Bldg A 1st Flr HVAC Plan  
1/4" = 1'-0"

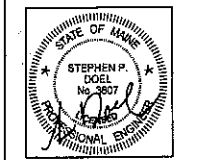


49 DARTMOUTH STREET  
PORTLAND, MAINE 04101  
207-778-1050  
www.pdtarch.com

COPYRIGHT 2011  
PDT Architects  
Reuse or reproduction of the  
contents of this document is not  
permitted without written  
permission of PDT Architects.



ADAMS SCHOOL REDEVELOPMENT  
Portland, ME



JOB NO.  
08-058

DRWN: CHK  
JMV SPD

SCALE:  
1/4" = 1'-0"

ISSUE  
5 MARCH 2012

TITLE  
Bldg A First Floor  
Mechanical Plans

SHEET  
M101

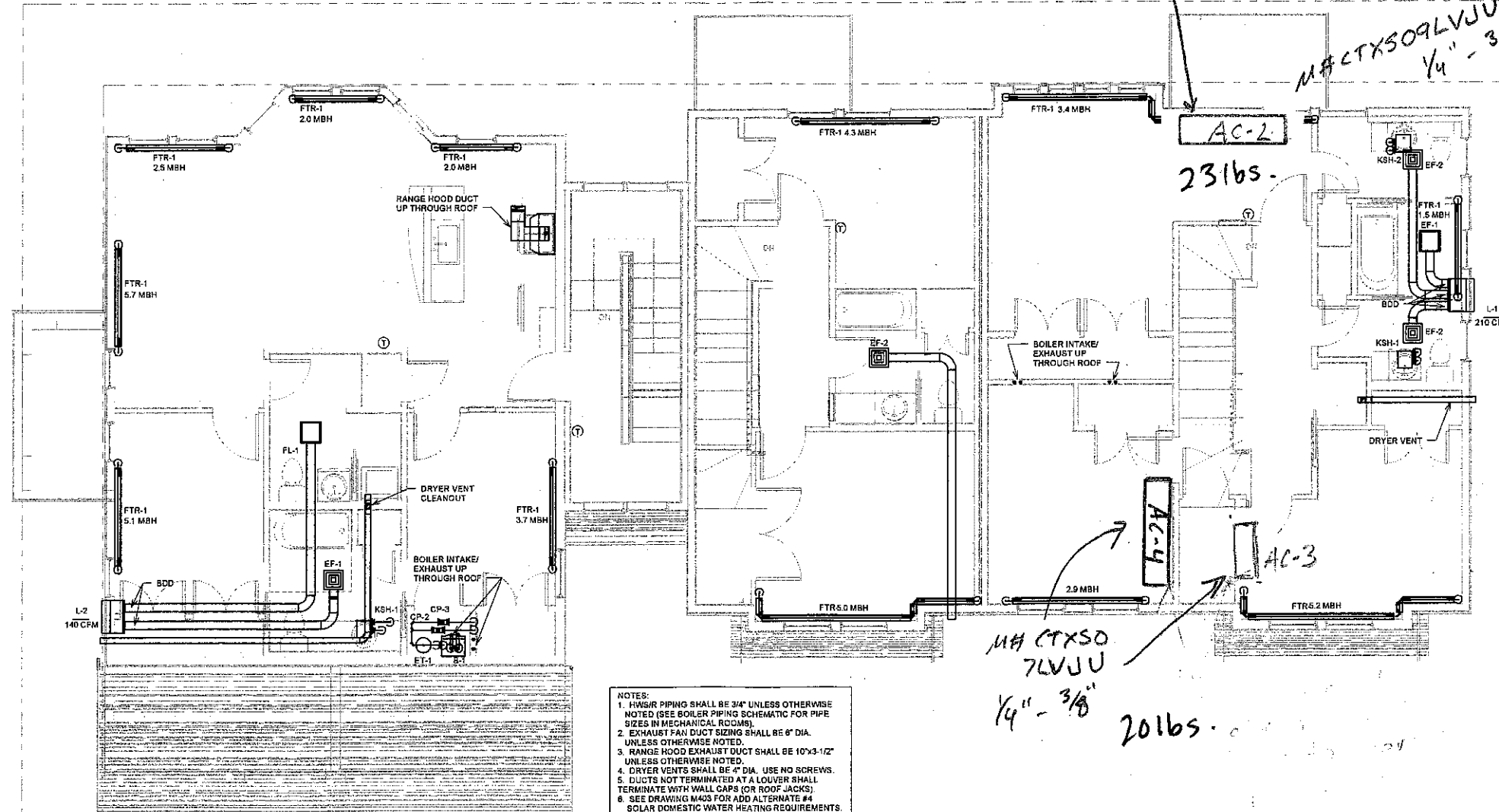
NOTE:  
Buildings B, C & D are similar to Building A, refer to Architectural drawings for more information.

Unit L  
Bldg. C

Condensate drain  
outs roof below

M# CTXSO9LVJU  
1/4" - 3/8"

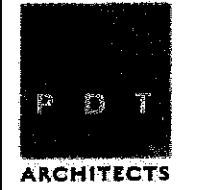
M# CTXSO  
7LVJU  
1/4" - 3/8"  
20lbs.



- NOTES:
1. HWIR PIPING SHALL BE 3/4" UNLESS OTHERWISE NOTED (SEE BOILER PIPING SCHEMATIC FOR PIPE SIZES IN MECHANICAL ROOMS).
  2. EXHAUST FAN DUCT SIZING SHALL BE 6" DIA. UNLESS OTHERWISE NOTED.
  3. RANGE HOOD EXHAUST DUCT SHALL BE 10"x3-1/2" UNLESS OTHERWISE NOTED.
  4. DRYER VENTS SHALL BE 4" DIA. USE NO SCREWS.
  5. DUCTS NOT TERMINATED AT A LOUVER SHALL TERMINATE WITH WALL CAPS (OR ROOF JACKS).
  6. SEE DRAWING M405 FOR ADD ALTERNATE #4 SOLAR DOMESTIC WATER HEATING REQUIREMENTS.

1 Bldg A 2nd Flr HVAC Plan  
1/4" = 1'-0"

\* Do not mount registers yet -  
need owner approval

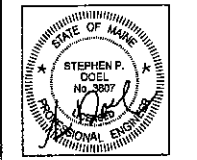


49 DARTMOUTH STREET  
PORTLAND, MAINE 04101  
207-775-1069  
www.pdtarch.com

COPYRIGHT 2011  
PDT Architects  
Reproduction or reproduction of the  
contents of this document is not  
permitted without written  
permission of PDT Architects.



ADAMS SCHOOL REDEVELOPMENT  
Portland, ME



JOB NO.  
08-058  
DRWN. CHK  
JMV SPD  
SCALE  
1/4" = 1'-0"  
ISSUE  
5 MARCH 2012

TITLE  
Bldg A Second  
Floor Mechanical  
Plan

SHEET  
M102