



JOB NO.
02-058

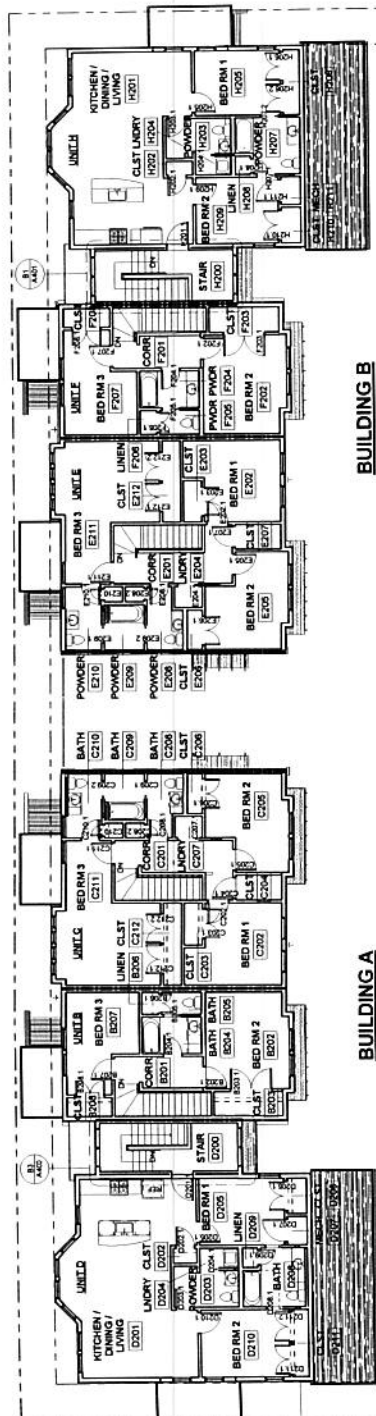
DRWN. CHK.
Checker

SCALE
1/8" = 1'-0"

ISSUE
5 MARCH 2012

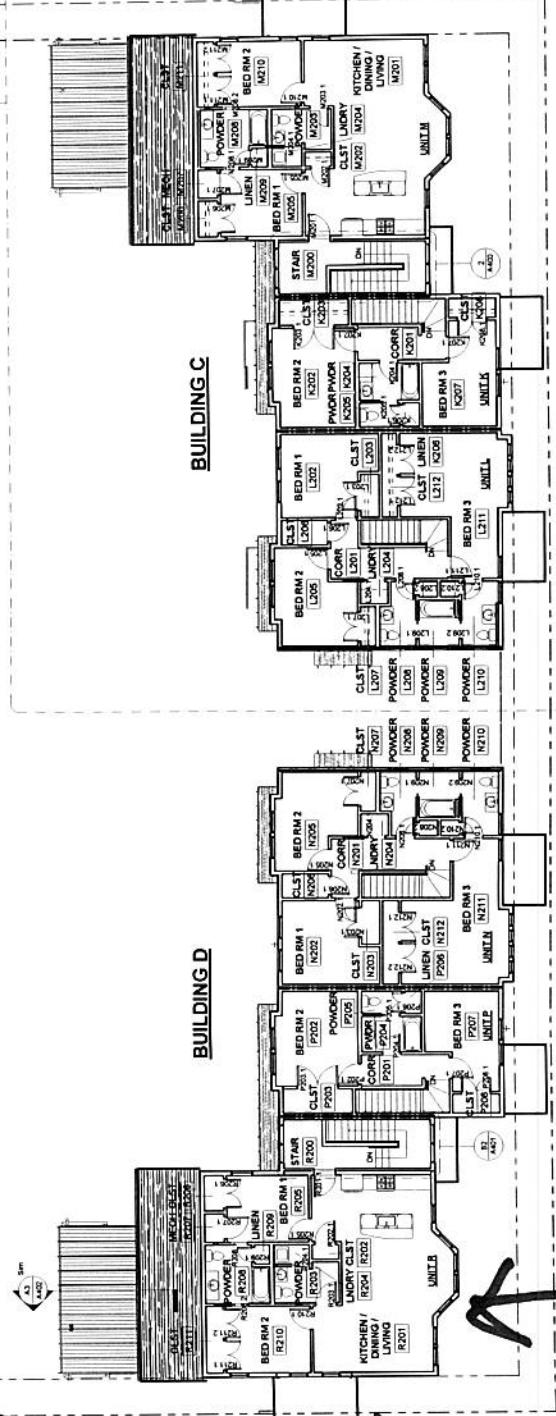
TITLE
SECOND FLOOR - ALL BUILDINGS

SHEET
A102



NOTES:
 1. SEE A103, A104 FOR TYPICAL BUILDING DIMENSIONS.
 2. UNIT A IS A TYPICAL DWELLING UNIT PER ANSI/ICC A117.1.
 LEGEND: 1HR RATED ASSEMBLY, SEE SHEET A103

BUILDING B



BUILDING D

Unit M

1/8" = 1'-0"

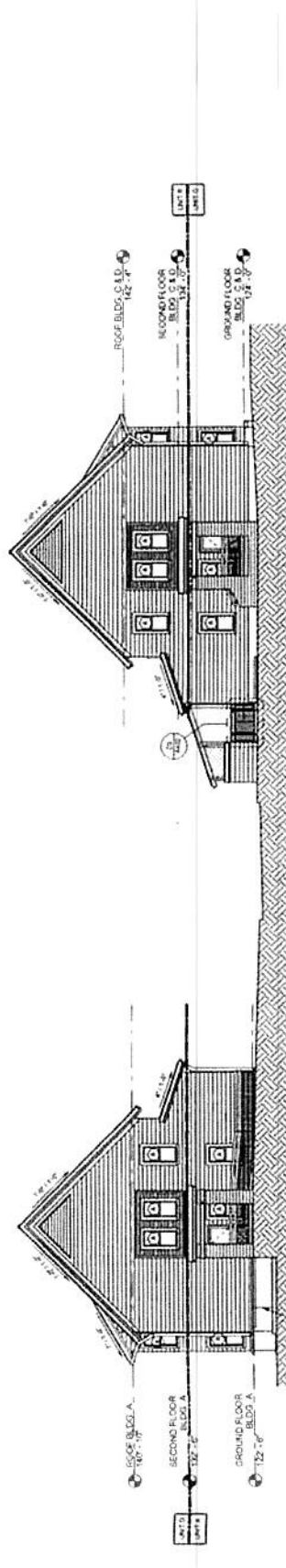


ZONING PERMITS
08-0099
CITY OF PORTLAND
CHECKED BY
DATE
1/17/12

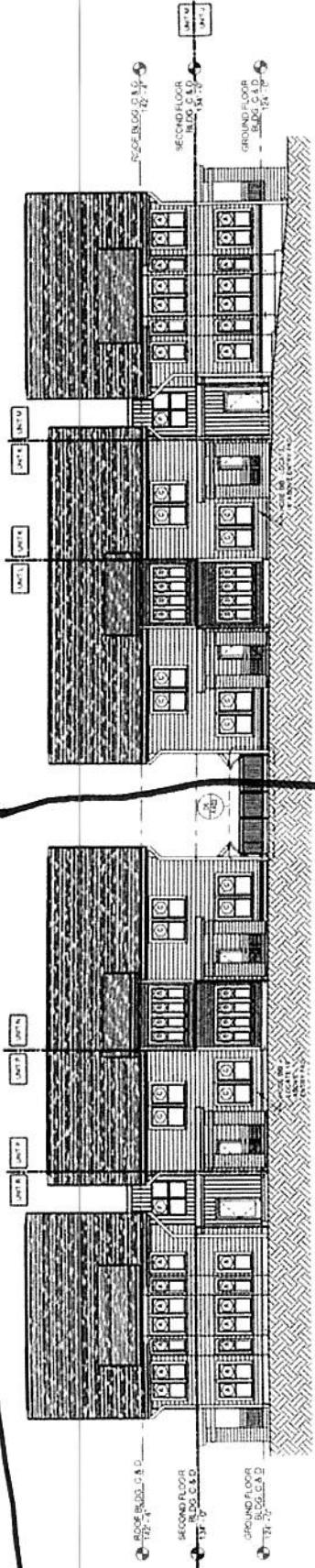
REVISIONS
DATE
3 MARCH 2012

TITLE
EXTERIOR CONDO
ELEVATIONS

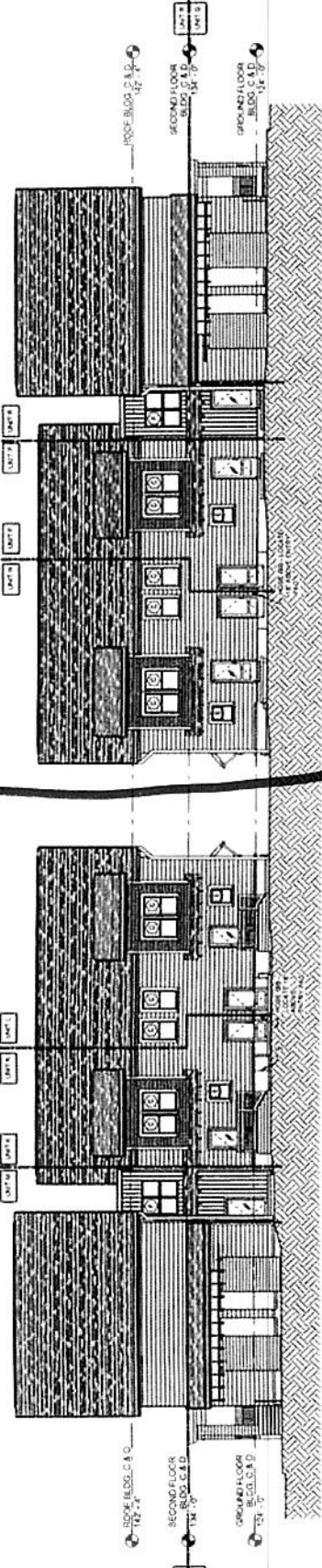
SHEET
4



1 EXTERIOR ELEVATION WEST



2 EXTERIOR ELEVATION SOUTH



3 EXTERIOR ELEVATION NORTH



ARCHITECTS
 45 DARTMOUTH STREET
 PORTLAND, MAINE 04101
 TEL: 603.733.2000
 WWW.PDTARCHITECTS.COM

COPYRIGHT 2012
 P. D. T. ARCHITECTS
 All rights reserved. No part of this publication may be reproduced, stored in a retrieval system, or transmitted, in any form or by any means, electronic, mechanical, photocopying, recording, or by any information storage and retrieval system, without the prior written permission of P. D. T. ARCHITECTS.

ADAMS SCHOOL REDEVELOPMENT
 Portland, Maine



JOB NO.
02-056

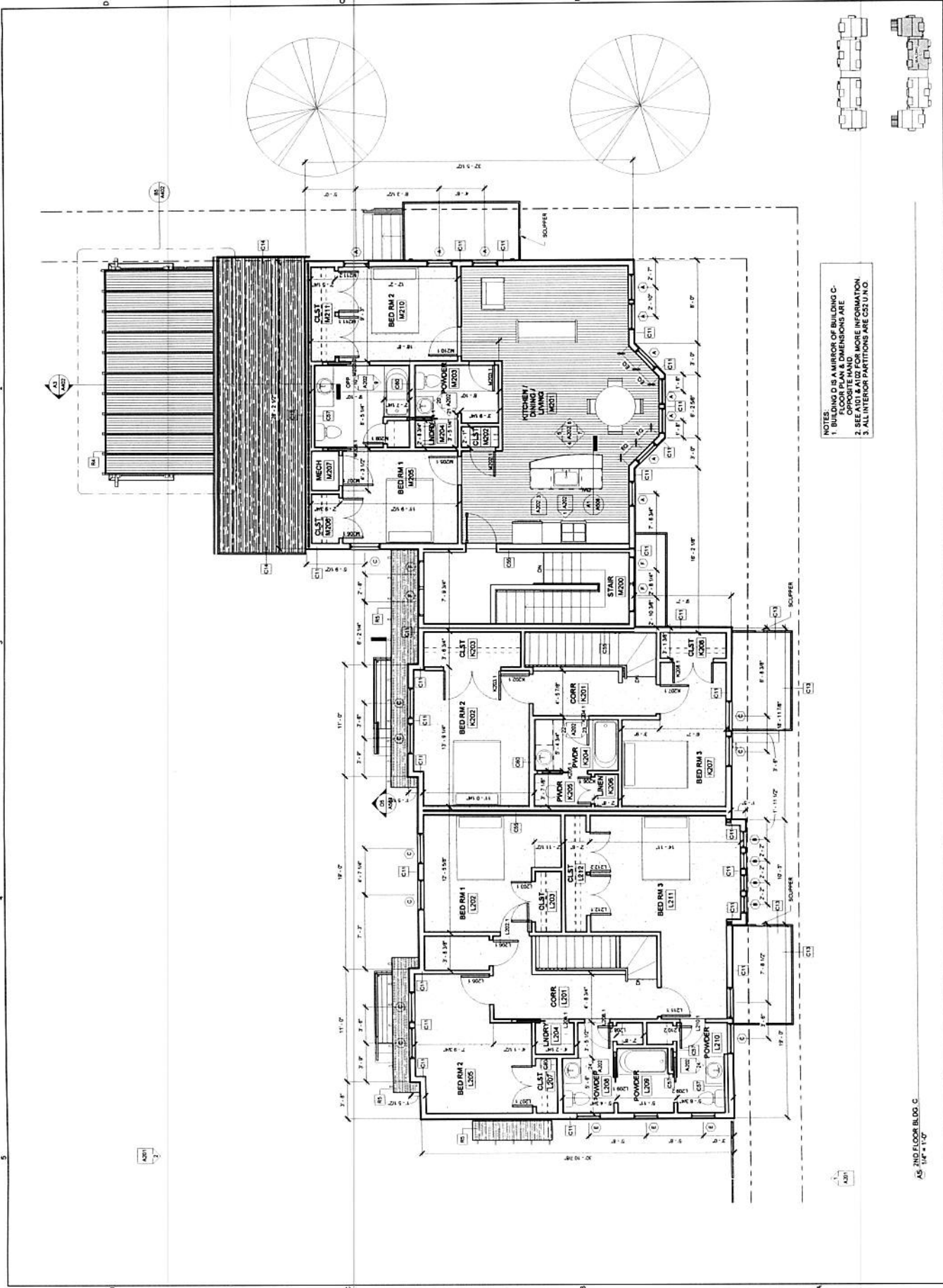
DRAWN BY
CHK
Chickay

SCALE
1/4" = 1'-0"

ISSUE
5 MARCH 2012

TITLE
ENLARGED SECOND FLOOR PLAN - BUILDING C

SHEET
A106



- NOTES:**
1. BUILDING C IS A PORTION OF BUILDING C. FLOOR PLAN & DIMENSIONS ARE OPPOSITE HAND.
 2. SEE A101 & A102 FOR MORE INFORMATION.
 3. ALL INTERIOR PARTITIONS ARE CS2 V.I.D.



A2 - 2ND FLOOR BLDG. C
 1/4" = 1'-0"