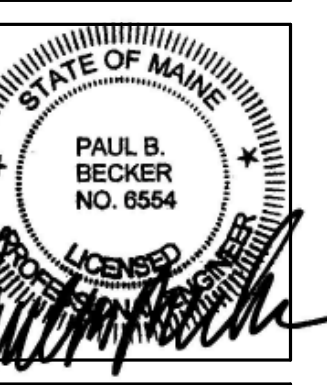




49 DARTMOUTH STREET
PORTLAND, MAINE 04101
207-775-1059
www.pdtarch.com

COPYRIGHT 2012
PDT Architects
Reuse or reproduction of the
contents of this document is not
permitted without written
permission of PDT Architects.

Adams School Redevelopment
VESPER/WILSON/MOODY ST--PORTLAND, ME



JOB NO.
08-056

DRWN. CHK
D.S.B.

SCALE:
As indicated

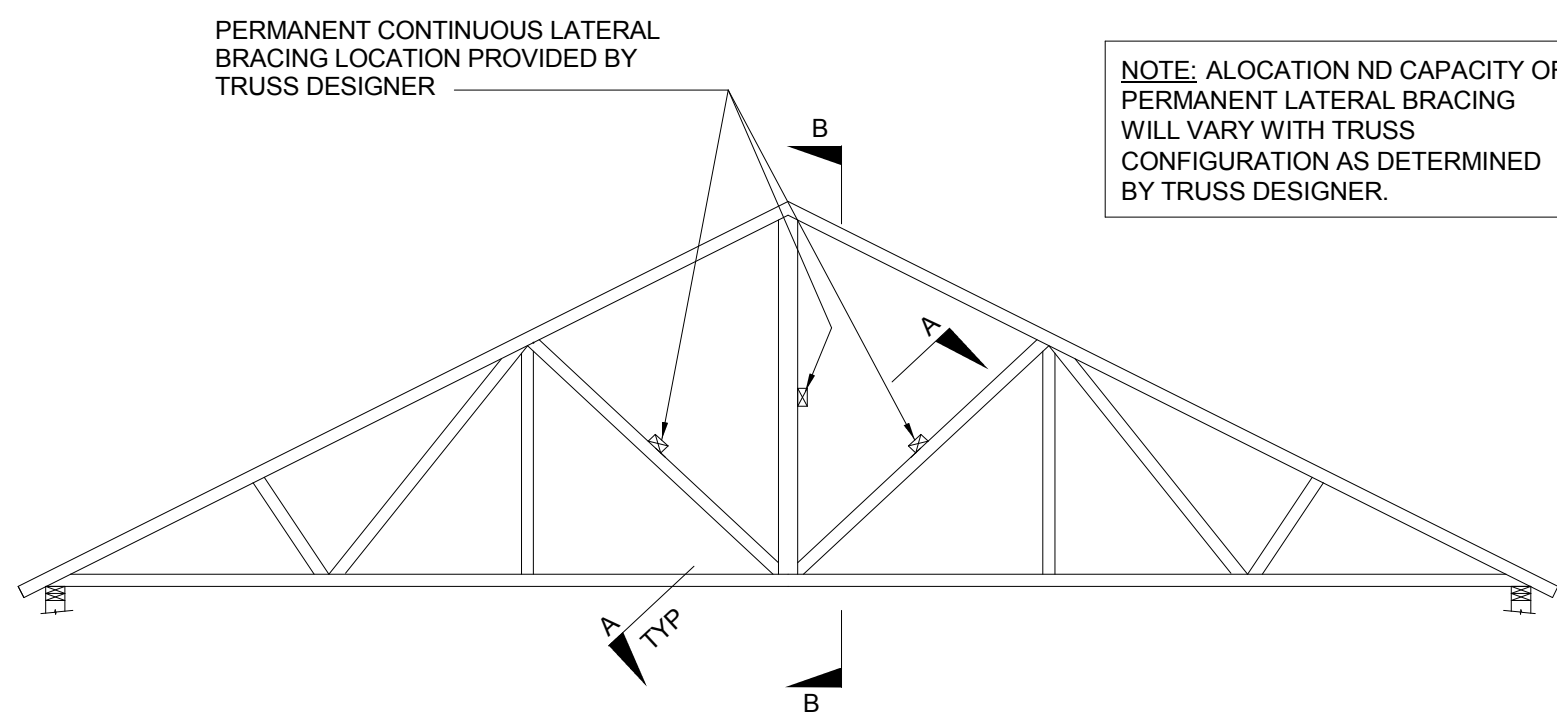
ISSUE
03/05/12

TITLE
TRUSS DETAILS

SHEET

S2.3

PERMANENT LATERAL TRUSS BRACING CONNECTIONS/STRUTS FOR WEB MEMBERS

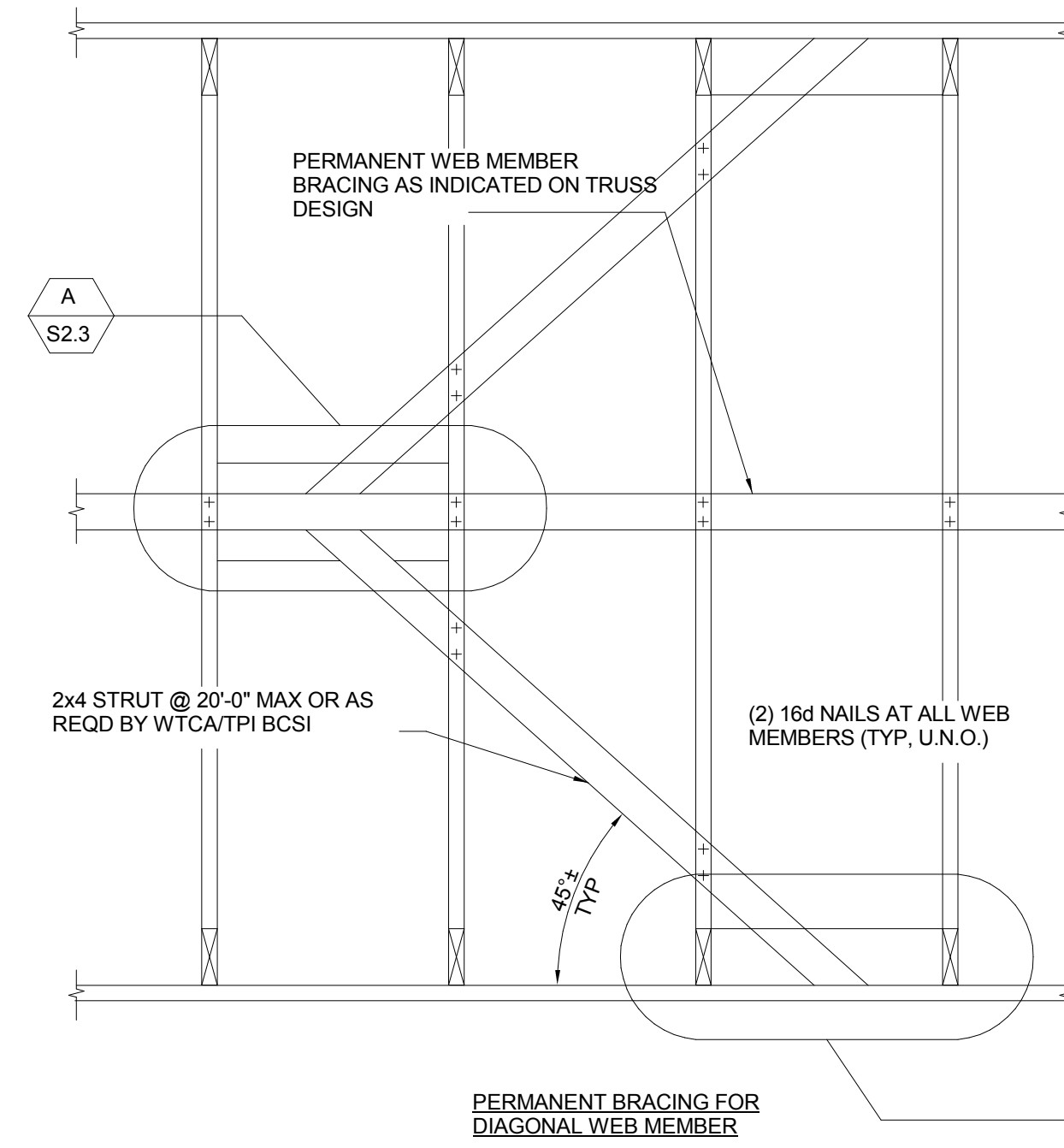


EXAMPLE ROOF TRUSS ELEVATION

N.T.S.

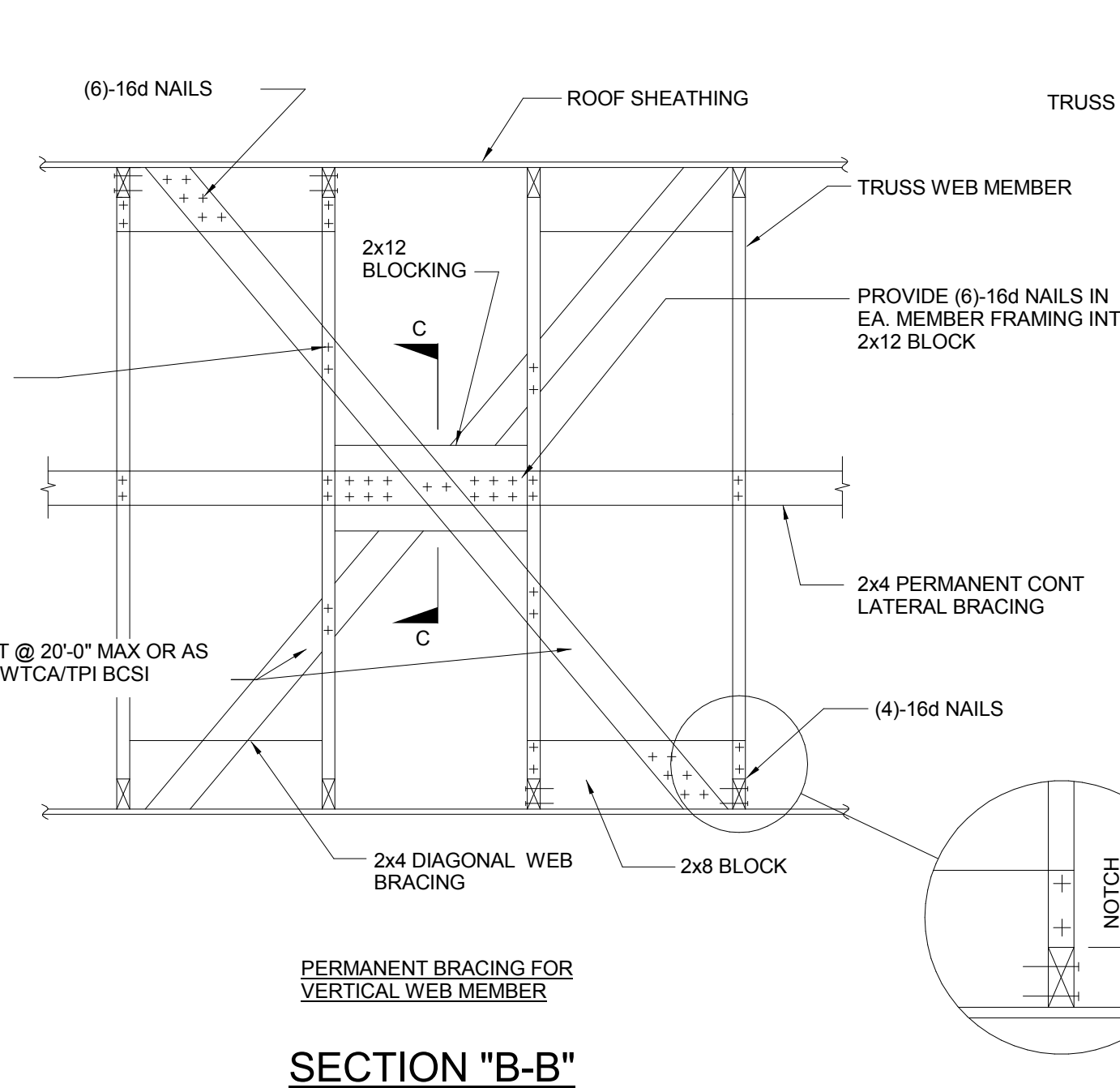
TRUSS MANUFACTURER/SUPPLIER NOTE:
1. LOCATION OF PERMANENT CONTINUOUS LATERAL WEB BRACING SHALL BE INDICATED ON TRUSS PLACEMENT PLAN AND MARKED ON TRUSS BY EITHER A TAG OR A PAINT MARK, PER THE PROJECT SPECIFICATIONS.

CONTRACTOR NOTES:
1. TOP CHORD PERMANENT BRACING: FULL SHEATHING
BOTTOM CHORD PERMANENT BRACING: STRAPPED GYPSUM SHEATHING/CEILING.
2. THESE DETAILS ADDRESS PERMANENT BRACING STRUTS/CONNECTIONS FOR WEB MEMBERS ONLY. SEE THE SPECIFICATIONS AND BCSI 1-03 FOR TEMPORARY BRACING REQUIREMENTS.
3. AT LOCATIONS WHERE WEB CROSS BRACING AND PERMANENT CONTINUOUS LATERAL BRACING ARE REQUIRED, USE THE CONNECTION SHOWN IN SECTION B-B.



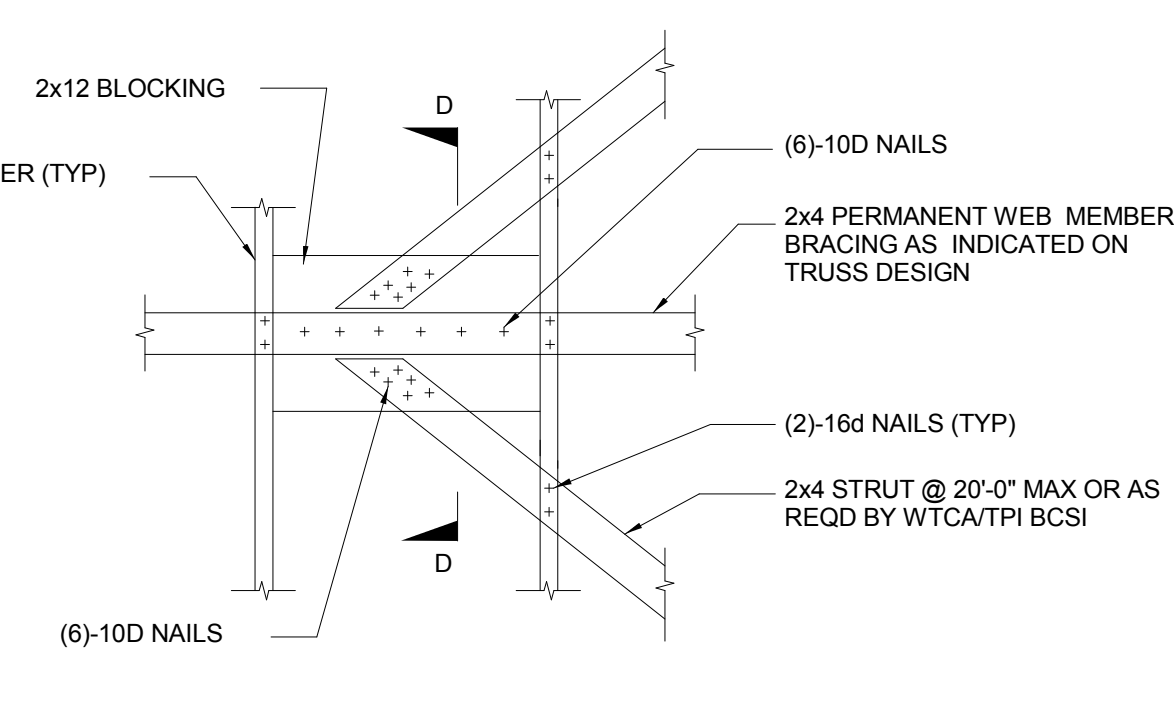
SECTION "A-A"

N.T.S.



SECTION "B-B"

N.T.S.

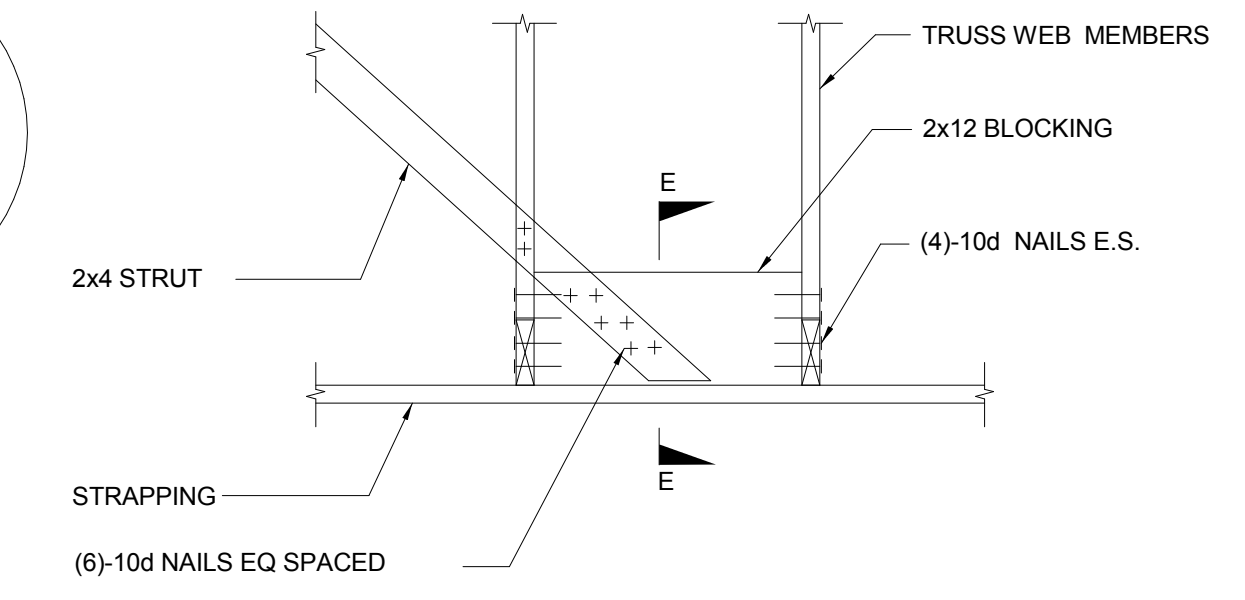


SECTION

3/4"=1'-0"

A

S2.3

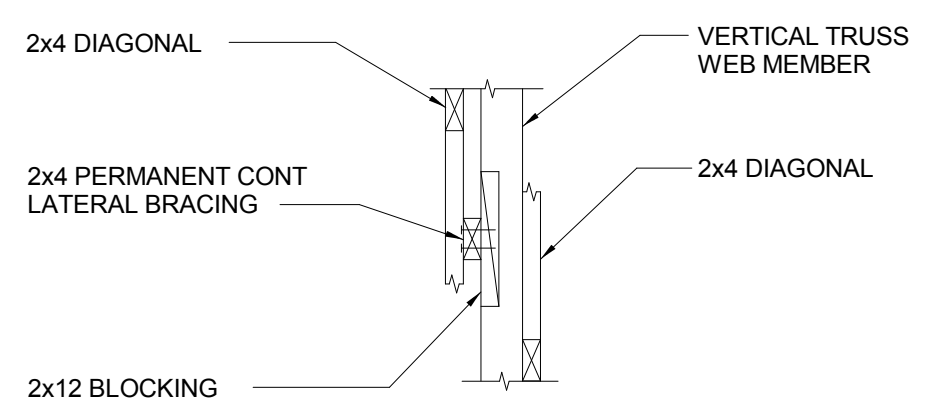


SECTION

3/4"=1'-0"

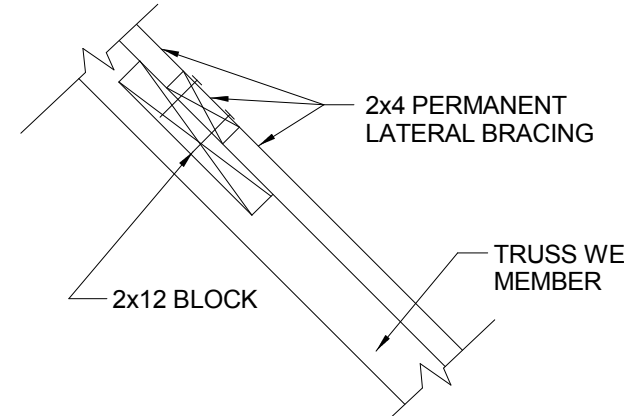
B

S2.3



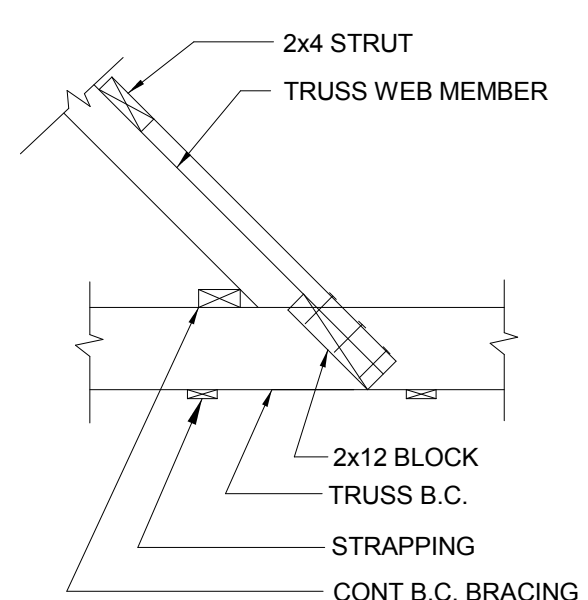
SECTION "C-C"

N.T.S.



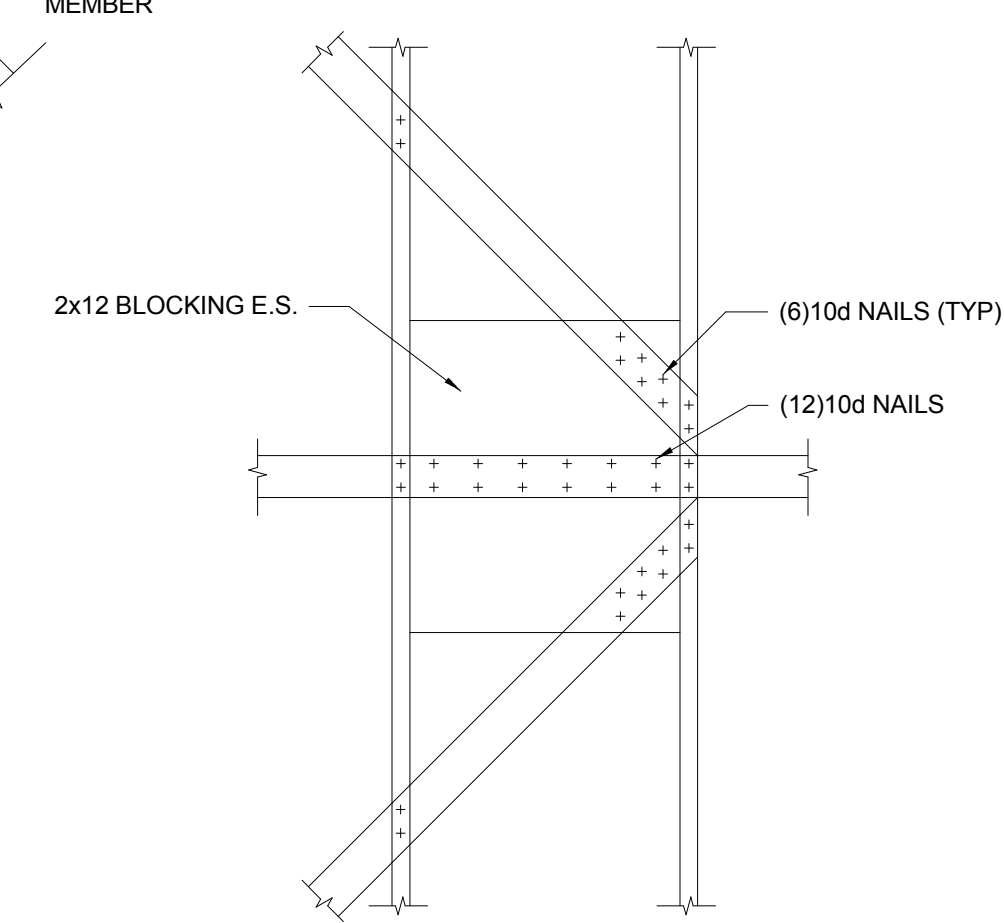
SECTION "D-D"

N.T.S.



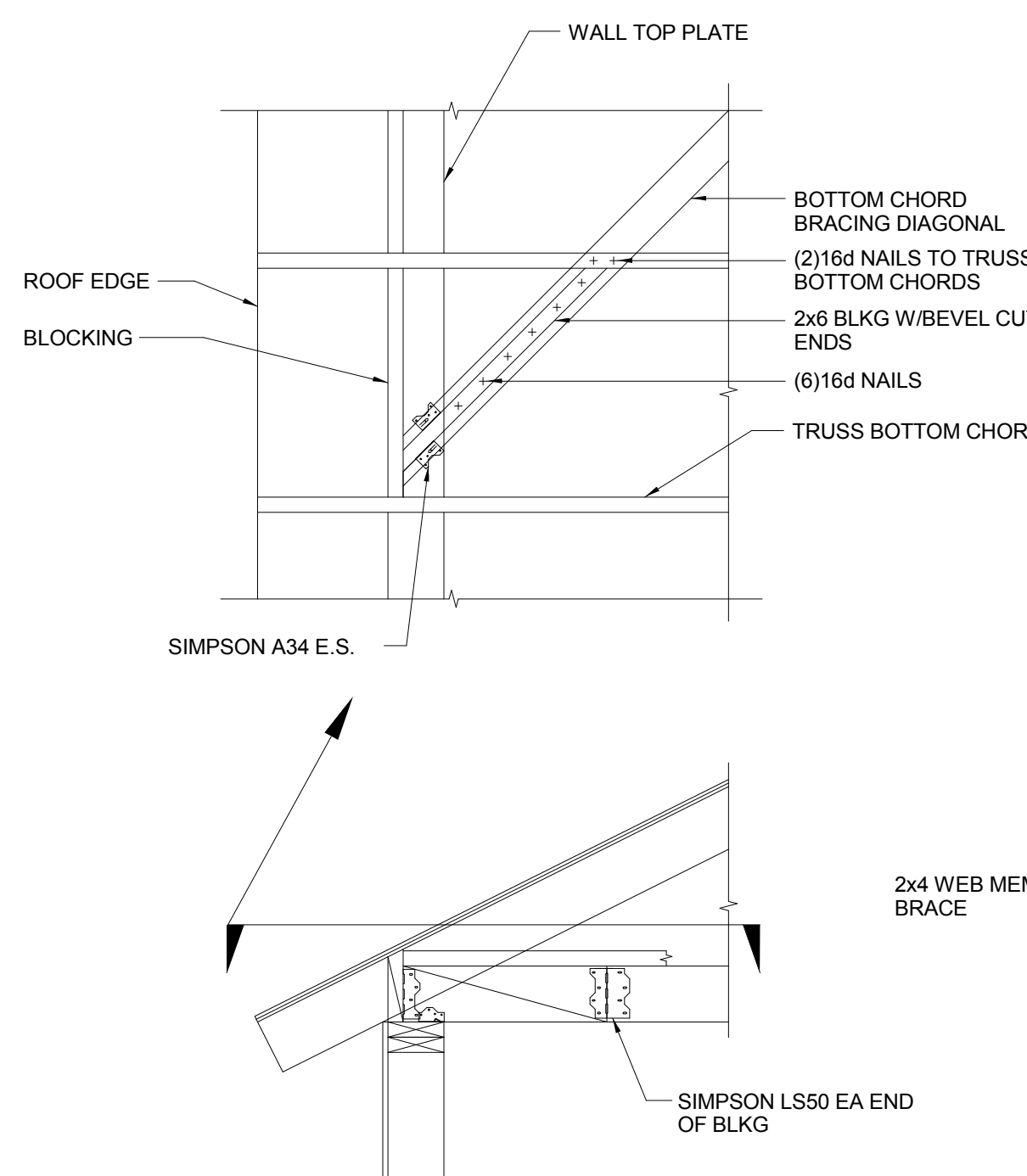
SECTION "E-E"

N.T.S.



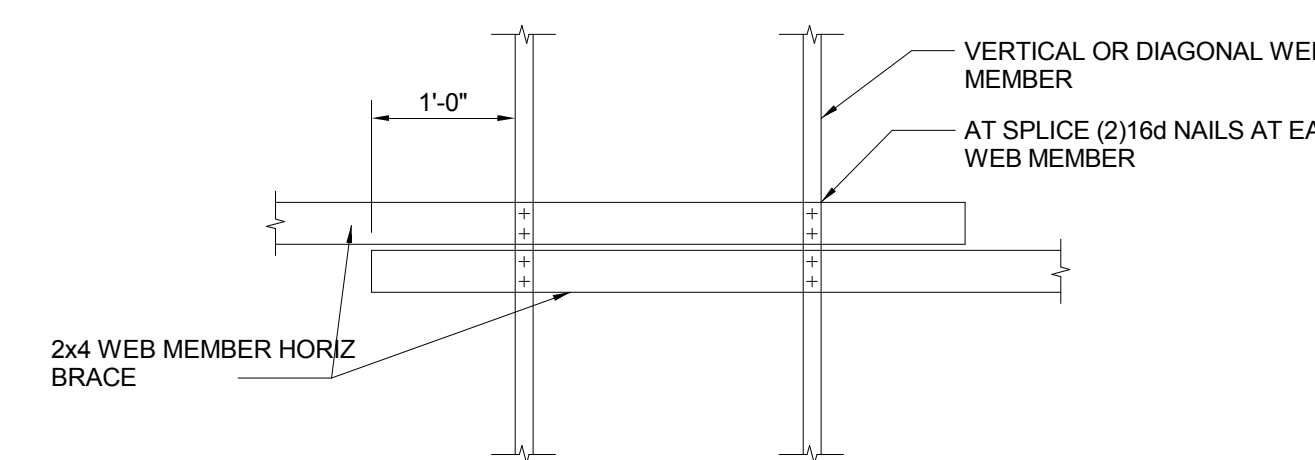
SECTION "F-F"

N.T.S.



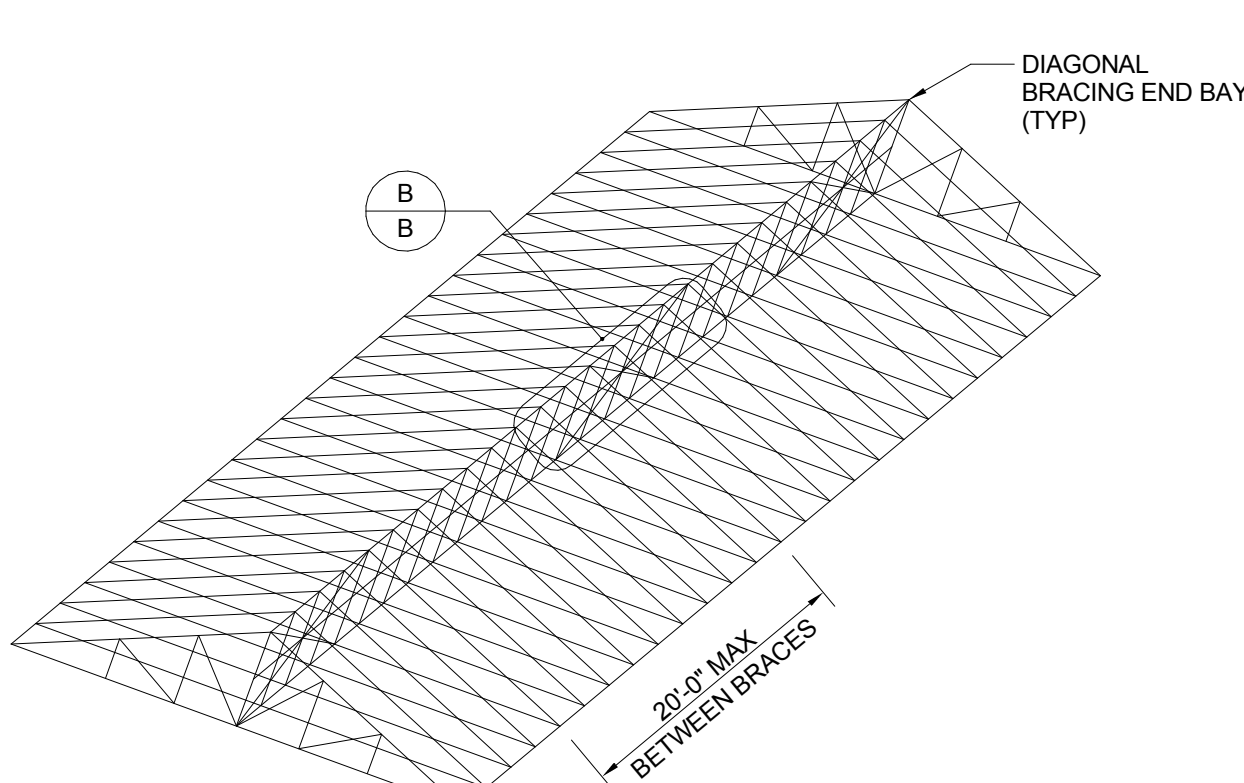
BOTTOM CHORD BRACING DETAIL

N.T.S.

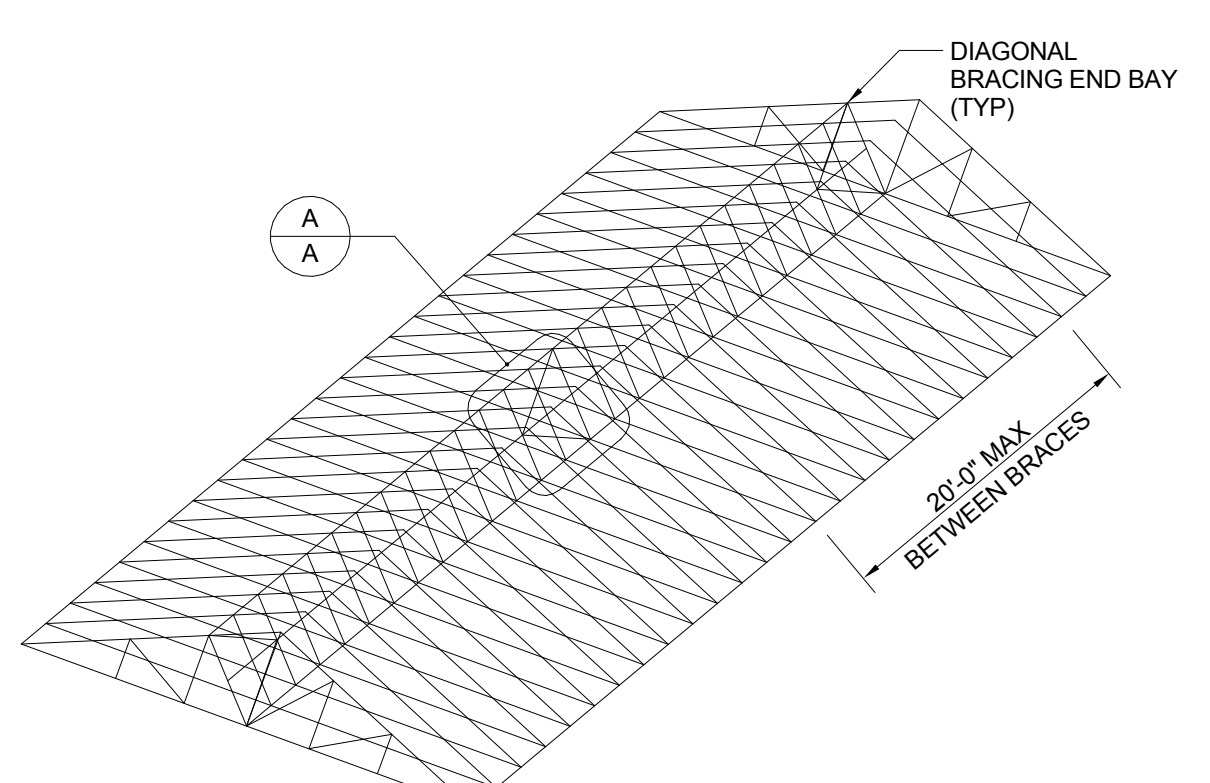


TYPICAL HORIZONTAL BRACING SPLICE

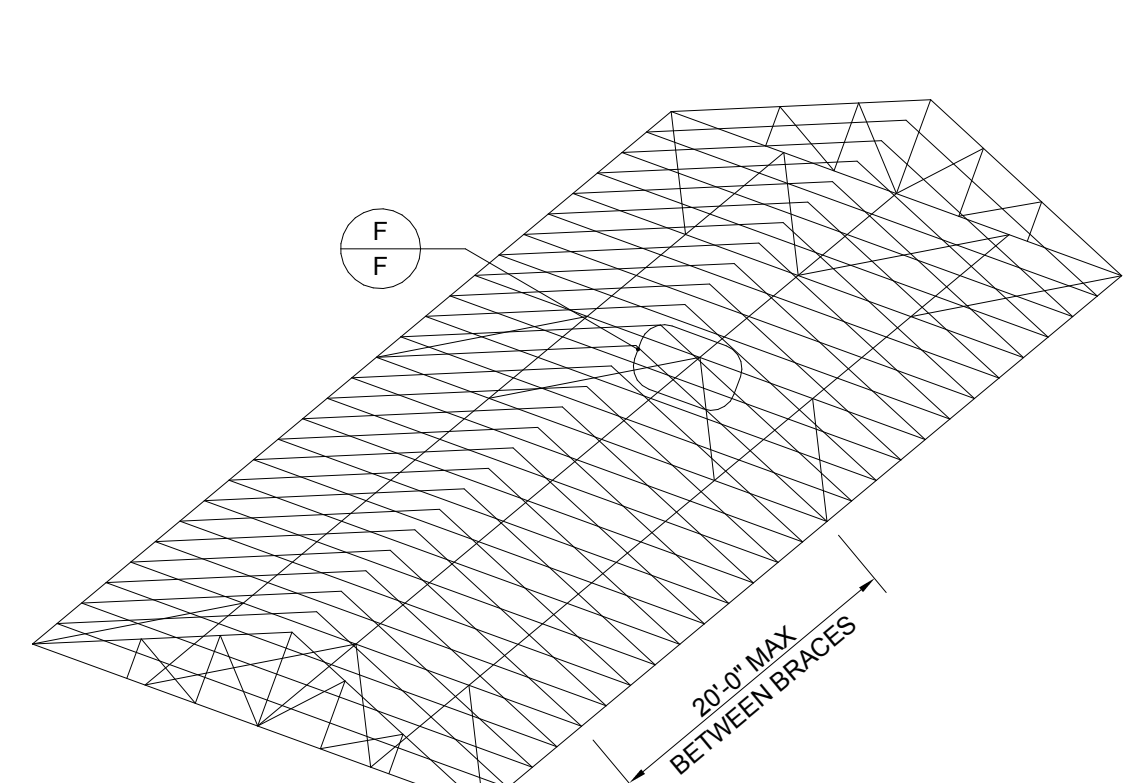
N.T.S.



VERTICAL MEMBER BRACING SCHEMATIC

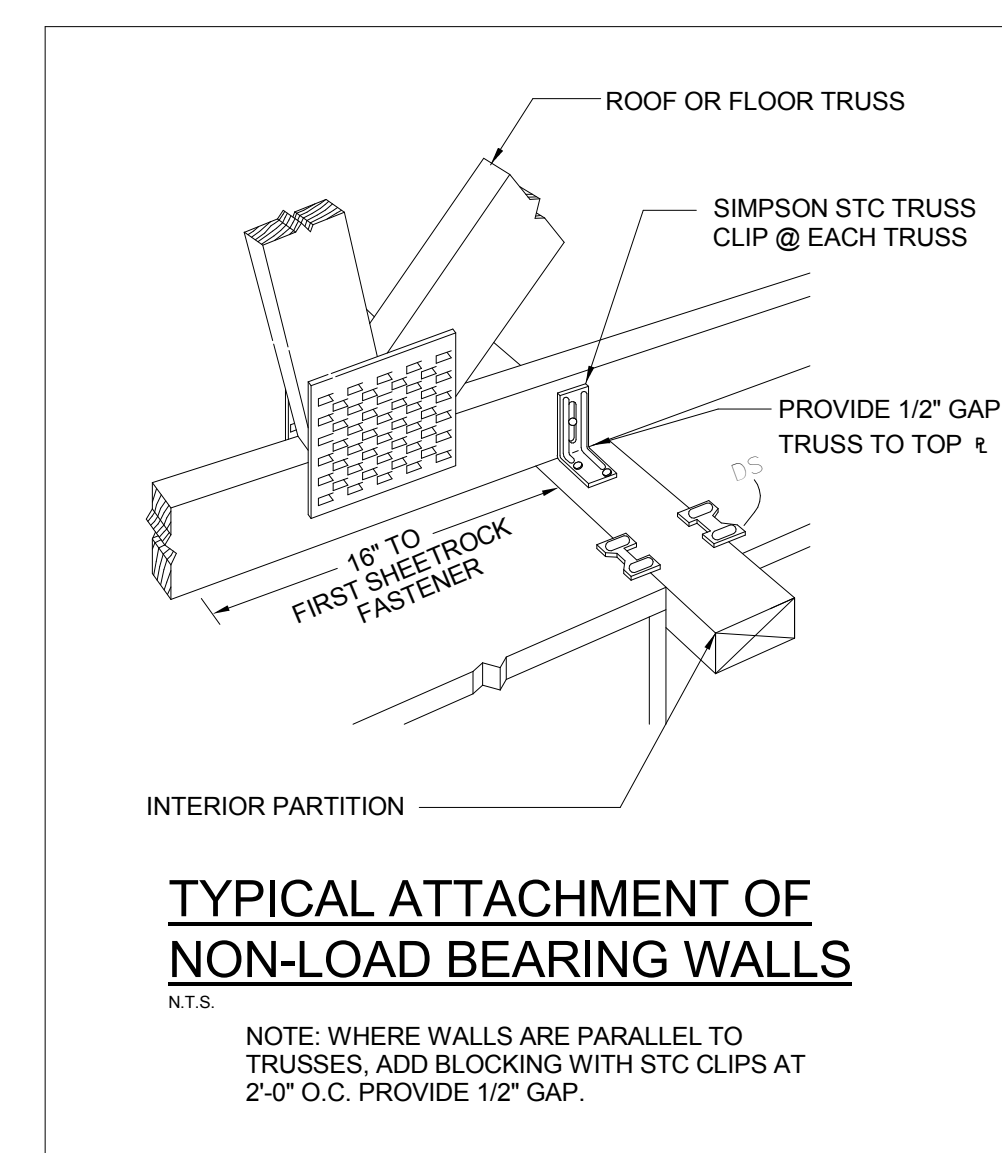


DIAGONAL MEMBER BRACING SCHEMATIC



BOTTOM CHORD BRACING SCHEMATIC

(WHEN DIRECTLY APPLIED, RIGID CEILING IS NOT PRESENT)



TYPICAL ATTACHMENT OF NON-LOAD BEARING WALLS

N.T.S.

NOTE: WHERE WALLS ARE PARALLEL TO TRUSSES, ADD BLOCKING WITH STC CLIPS AT 2'-0" O.C. PROVIDE 1/2" GAP.