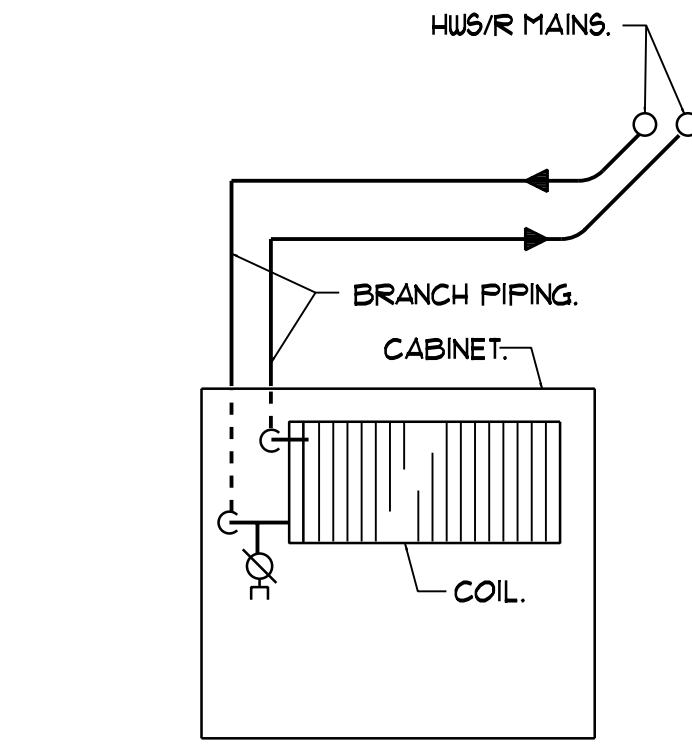
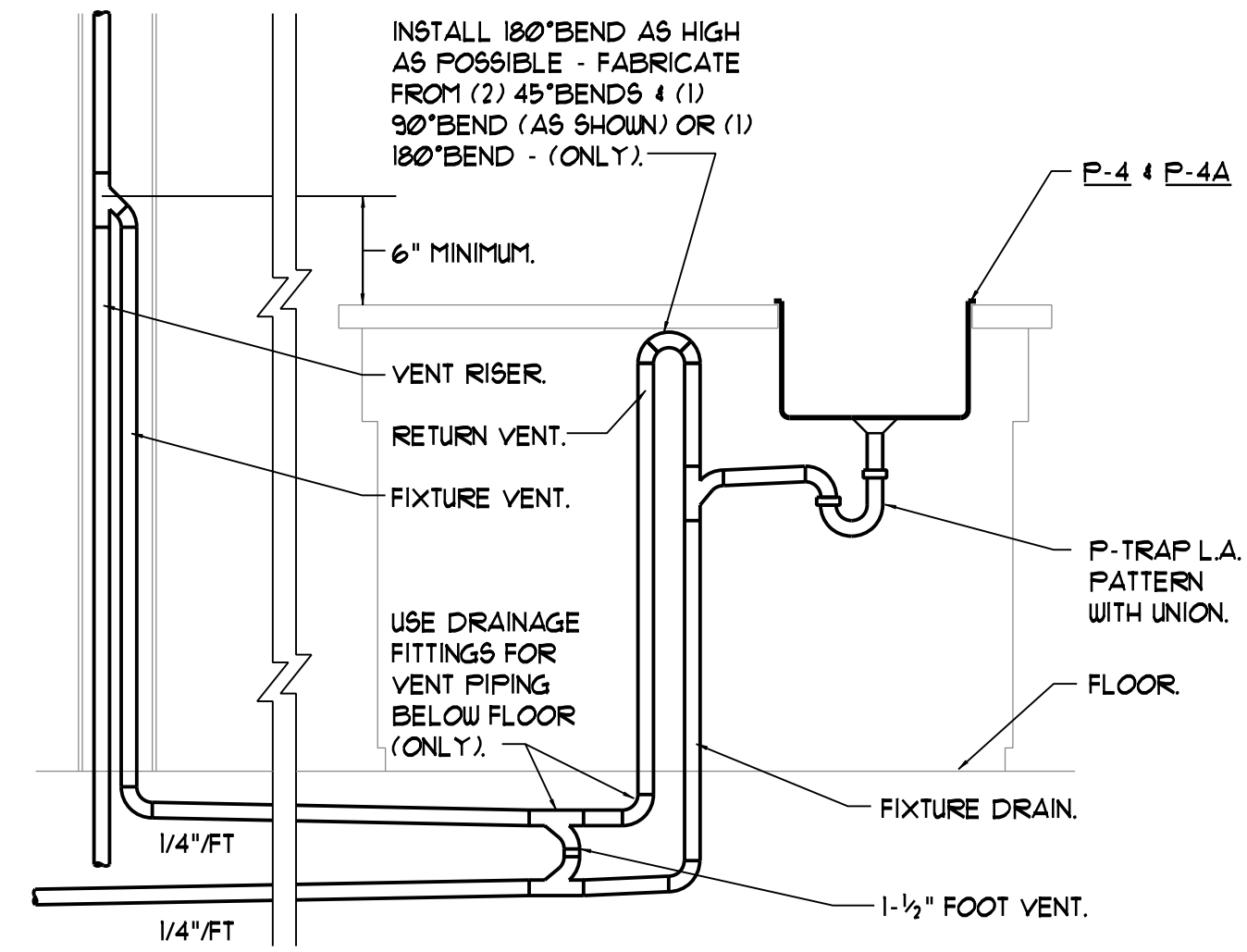


**DISPOSAL DRAIN DETAIL**  
NTS

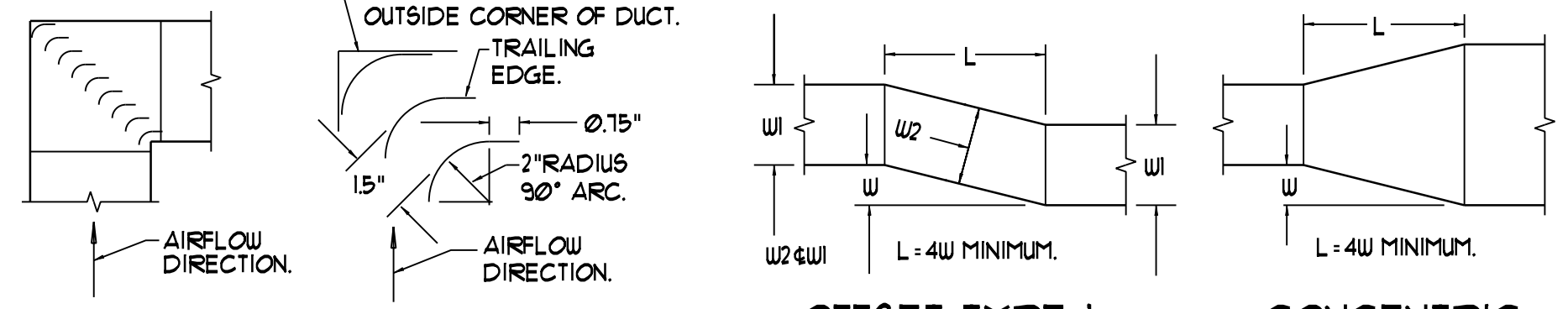


**WALL HEATER PIPING DETAIL**  
NTS

NOTE - PIPE MOUNTED AQUASTAT SHALL PREVENT FAN FROM OPERATING IF SUPPLY WATER IS BELOW 107°F



**ISLAND VENTING DETAIL**  
NTS

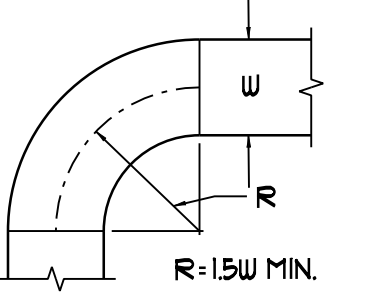


**RECT. ELBOW W/TURNING VANES**  
NTS

NOTE: INSTALL VANE EDGES TO PROJECT TANGENTS PARALLEL TO DUCT SIDES.

**OFFSET TYPE 1 (ANGLED)**  
NTS

**CONCENTRIC TRANSITION**  
NTS



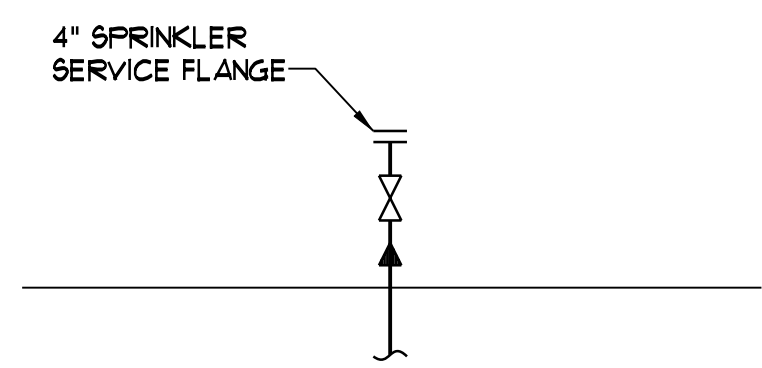
**RADIUS ELBOW**  
NTS

**RECTANGULAR TAP 45 DEGREE ENTRY**  
NTS

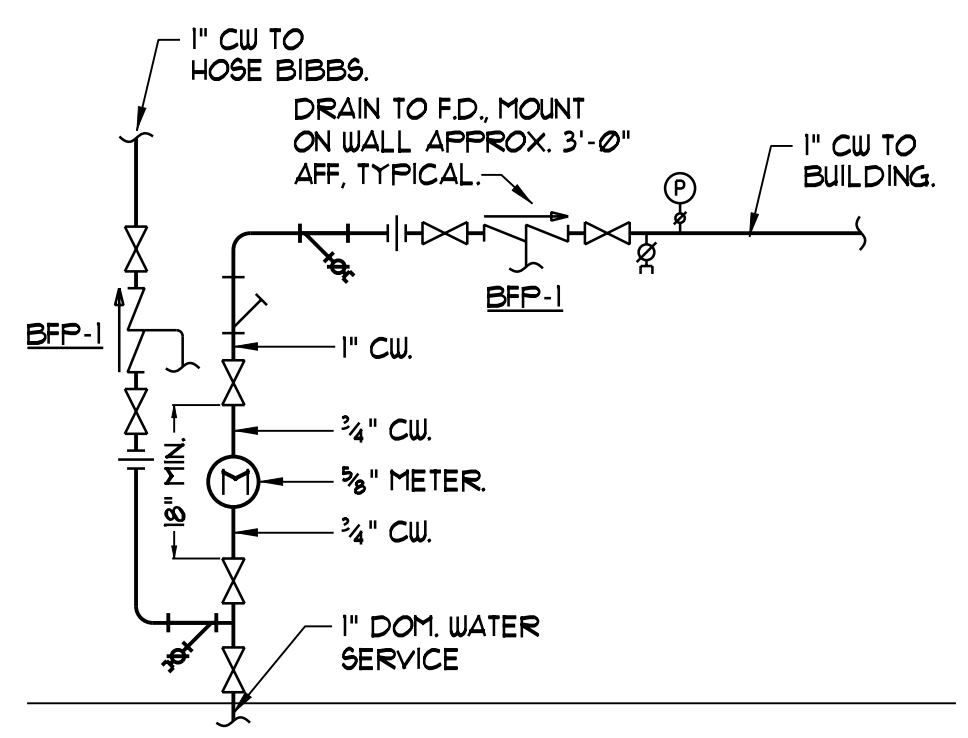
**OFFSET TYPE 2 (MITERED)**  
NTS

**ECCENTRIC TRANSITION**  
NTS

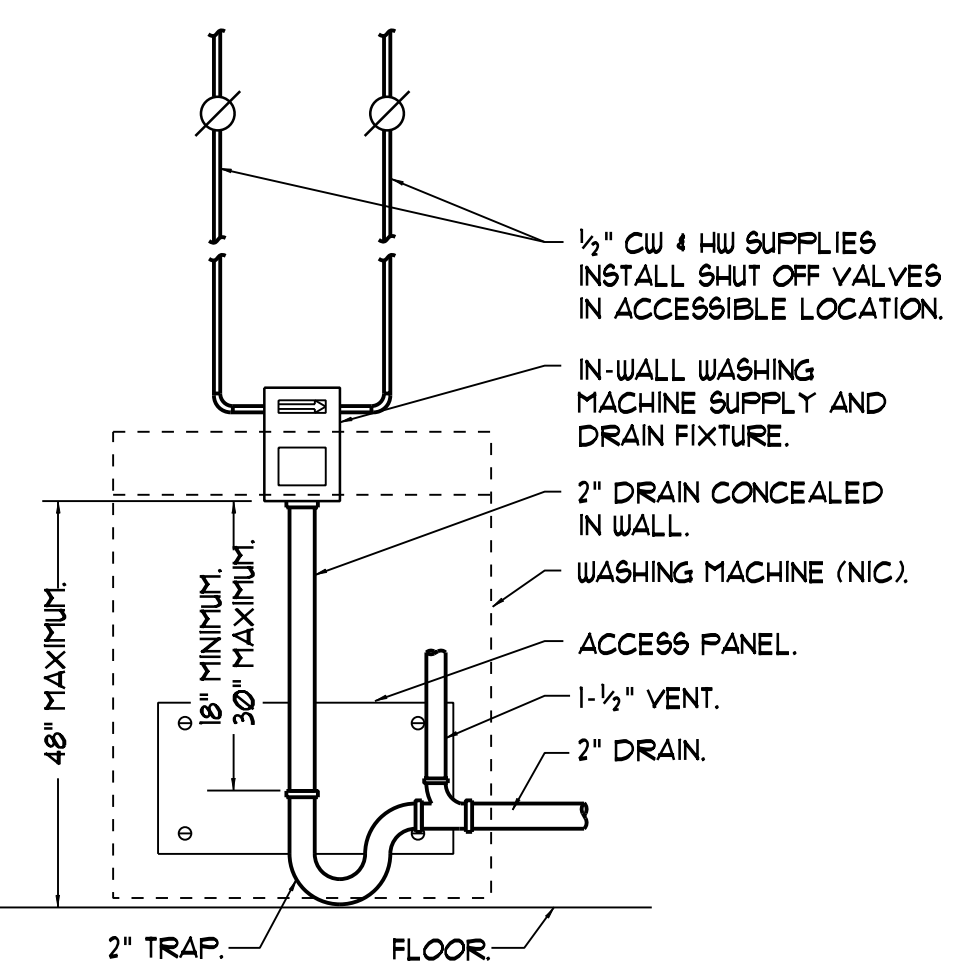
**LOW PRESSURE DUCT CONSTRUCTION DETAILS - TYPICAL**  
NTS



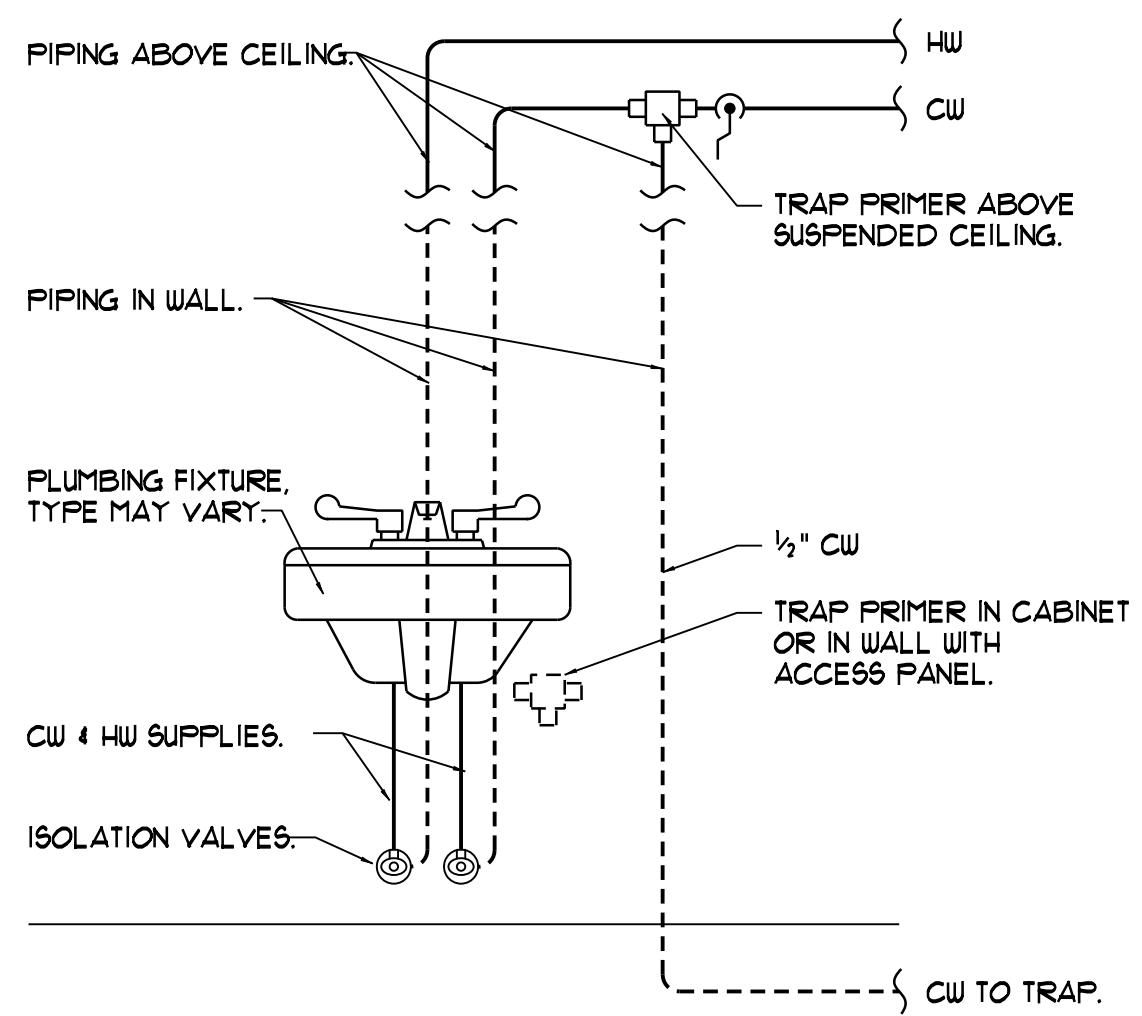
**SPRINKLER ENTRANCE DETAIL**  
NTS



**WATER ENTRANCE DETAIL**  
NTS

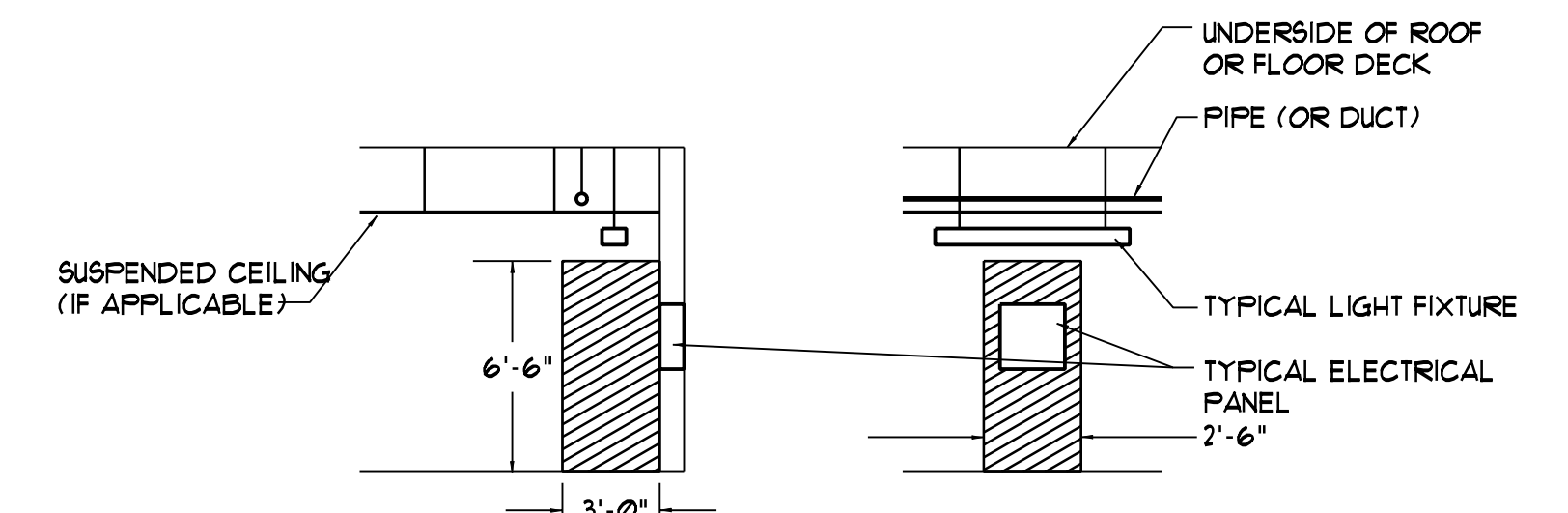


**WASHING MACHINE HOOK-UP DETAIL**  
NTS



**TRAP PRIMER CONNECTION DETAIL**  
NTS

NOTE - ALL FLOOR DRAINS SHALL HAVE TRAP PRIMERS, CONNECT TO NEAREST FIXTURE.



NOTE: NO DUCTWORK OR PIPING IS PERMITTED IN THE HATCHED AREAS.

SEE NEC SECTIONS 102.6 AND 408.18 (2005 EDITION)

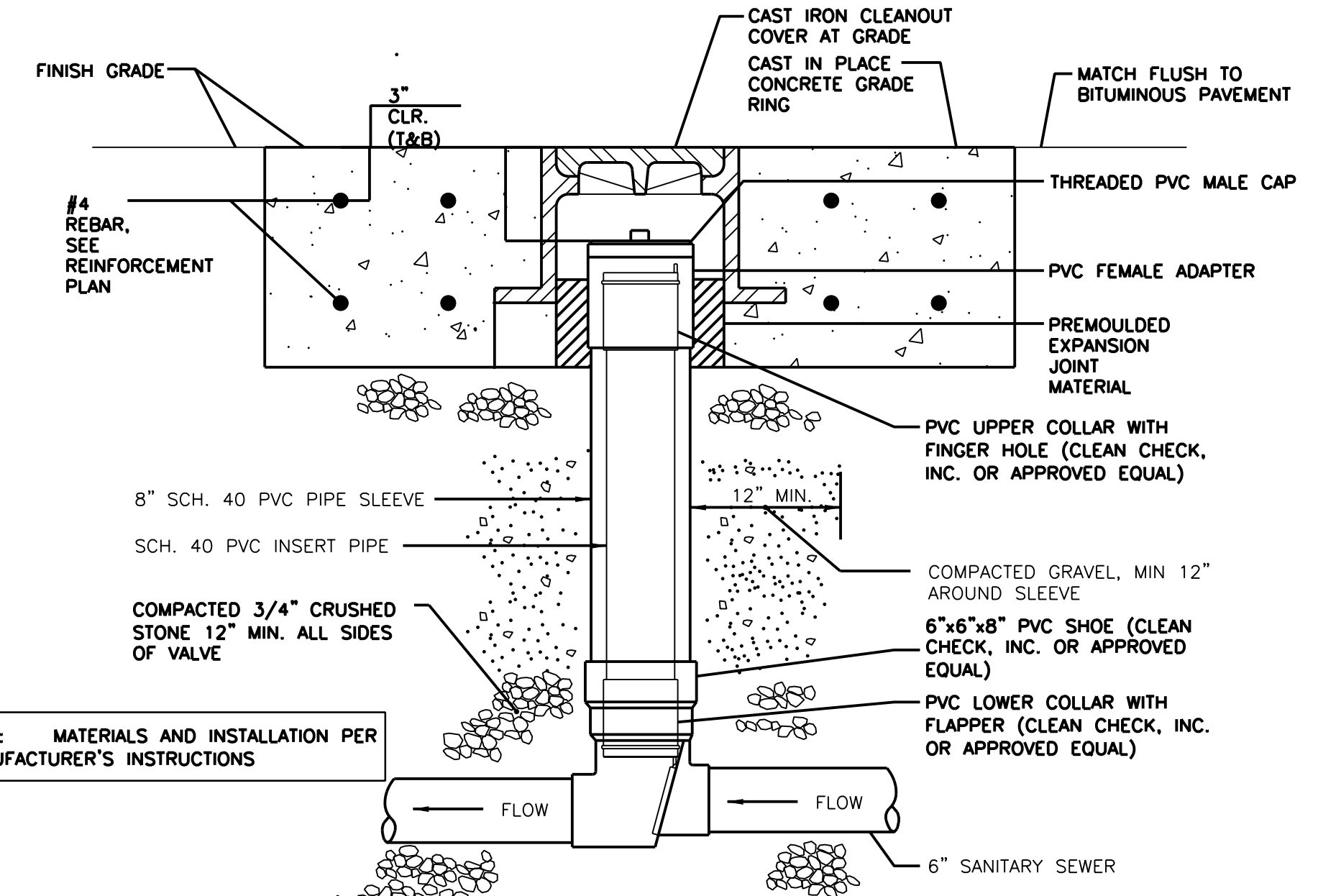
**SIDE VIEW**

**FRONT VIEW**

**SIDE VIEW**

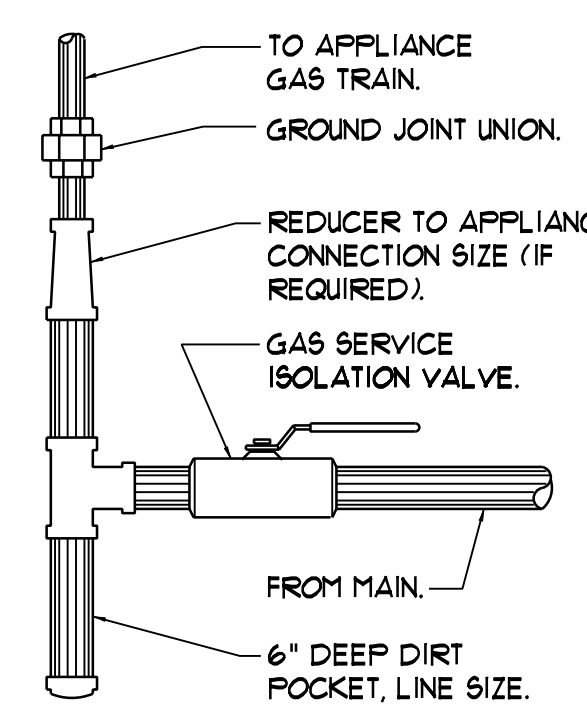
**FRONT VIEW**

**CLEARANCES AT ELECTRICAL PANELS**  
NTS



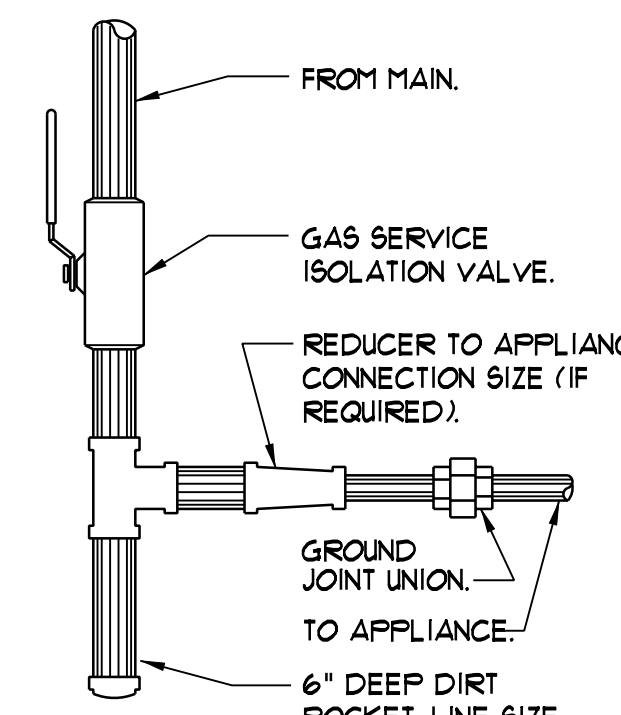
NOTE: MATERIALS AND INSTALLATION PER MANUFACTURER'S INSTRUCTIONS

**BACK WATER VALVE DETAIL**  
N.T.S.



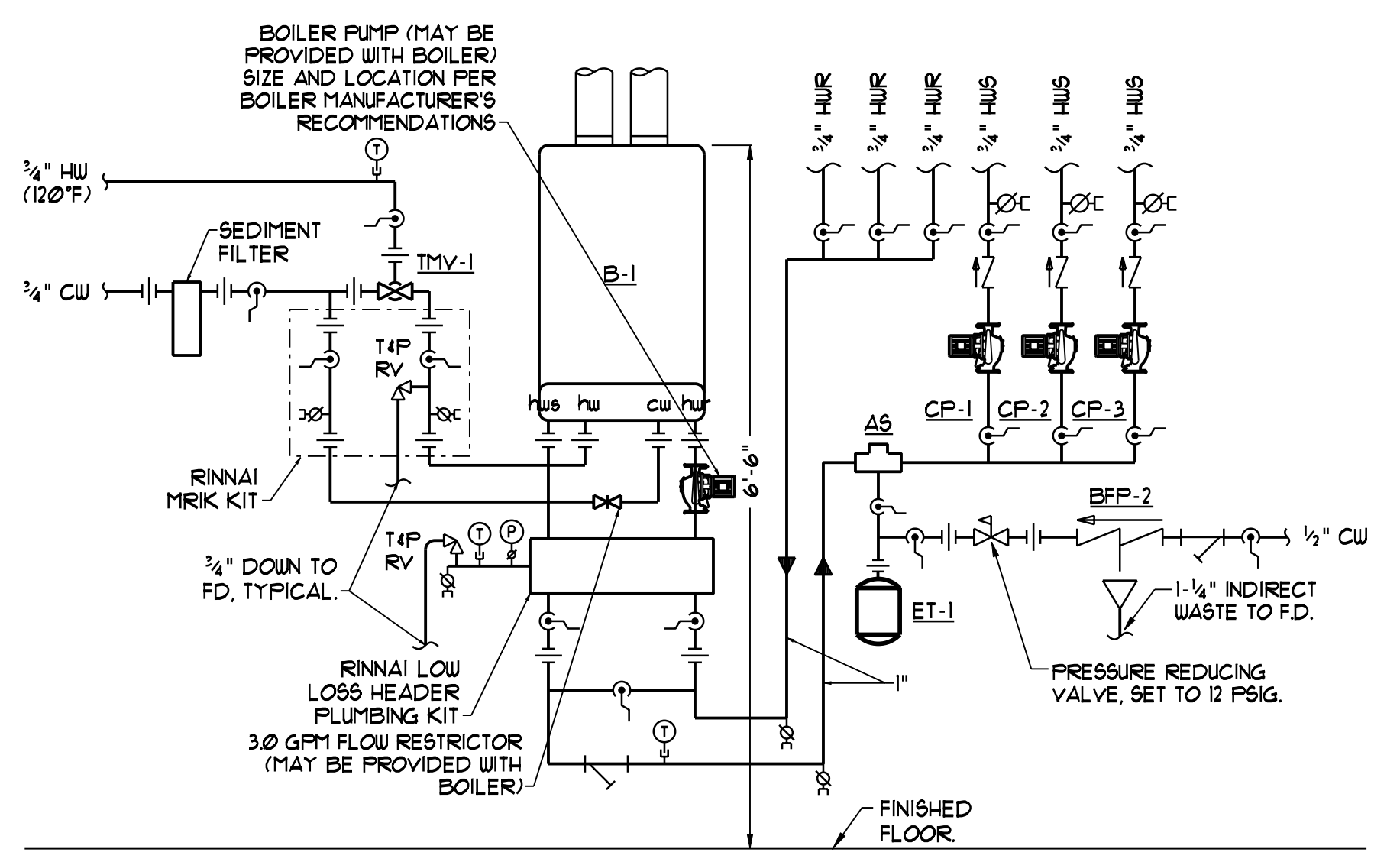
**UPFEED GAS PIPING CONNECTION DETAIL**  
NTS

NOTE: APPLIANCES WITH REGULATORS LOCATE PIPING SHOWN HEREIN UPSTREAM OF THE APPLIANCE REGULATOR. PROVIDE A TEST PLUG DOWNSTREAM OF THE APPLIANCE REGULATOR.



**DOWNFEED GAS PIPING CONNECTION DETAIL**  
NTS

NOTE: APPLIANCES WITH REGULATORS LOCATE PIPING SHOWN HEREIN UPSTREAM OF THE APPLIANCE REGULATOR. PROVIDE A TEST PLUG DOWNSTREAM OF THE APPLIANCE REGULATOR.



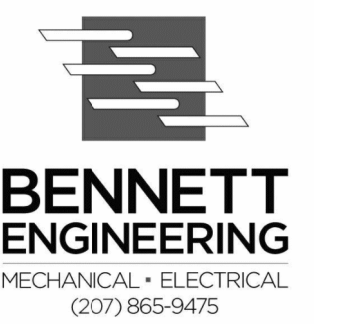
**BOILER PIPING SCHEMATIC**  
NTS

NOTE: The piping arrangement shall be per the boiler manufacturer's recommendations and all applicable codes.

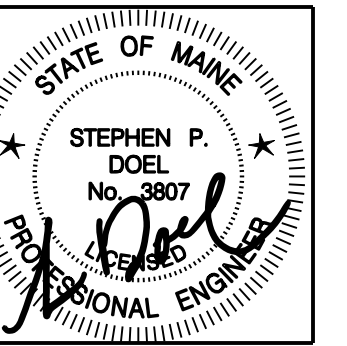


49 DARTMOUTH STREET  
PORTLAND, MAINE 04101  
207-775-1059  
www.pdtarch.com

COPYRIGHT 2011  
PDT Architects  
Reuse or reproduction of the contents of this document is not permitted without written permission of PDT Architects.



ADAMS SCHOOL REDEVELOPMENT  
Portland, ME



JOB NO. 08-056

DRWN. CHK. JMV SPD

SCALE: AS NOTED

ISSUE 5 MARCH 2012

TITLE Mechanical Details

SHEET M402