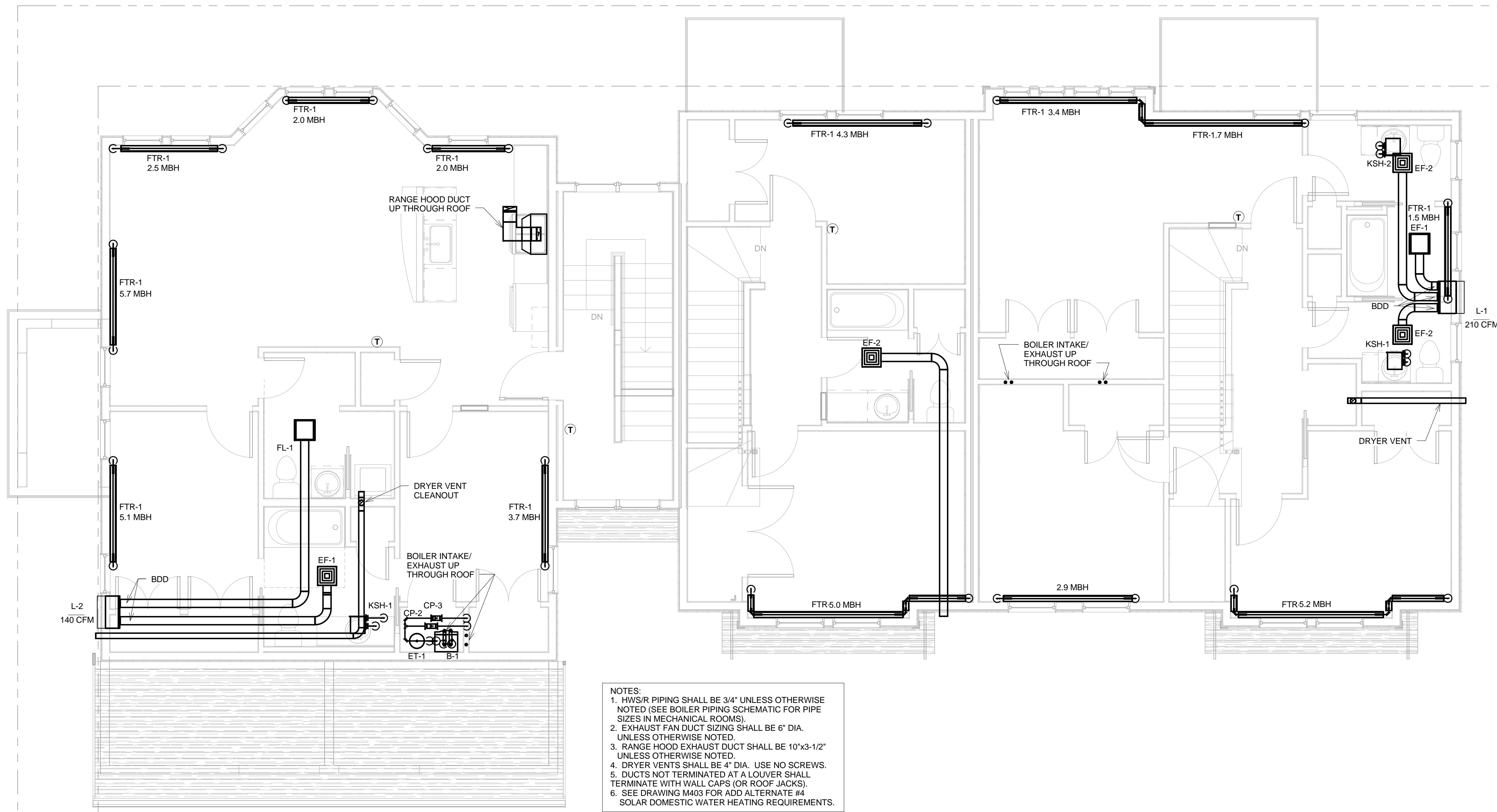


NOTE:
Buildings B, C & D are similar to Building A, refer to Architectural drawings for more information.



- NOTES:**
1. HWS/R PIPING SHALL BE 3/4" UNLESS OTHERWISE NOTED (SEE BOILER PIPING SCHEMATIC FOR PIPE SIZES IN MECHANICAL ROOMS).
 2. EXHAUST FAN DUCT SIZING SHALL BE 6" DIA. UNLESS OTHERWISE NOTED.
 3. RANGE HOOD EXHAUST DUCT SHALL BE 10"x3-1/2" UNLESS OTHERWISE NOTED.
 4. DRYER VENTS SHALL BE 4" DIA. USE NO SCREWS.
 5. DUCTS NOT TERMINATED AT A LOUVER SHALL TERMINATE WITH WALL CAPS (OR ROOF JACKS).
 6. SEE DRAWING M403 FOR ADD ALTERNATE #4 SOLAR DOMESTIC WATER HEATING REQUIREMENTS.

1 Bldg A 2nd Flr HVAC Plan
1/4" = 1'-0"

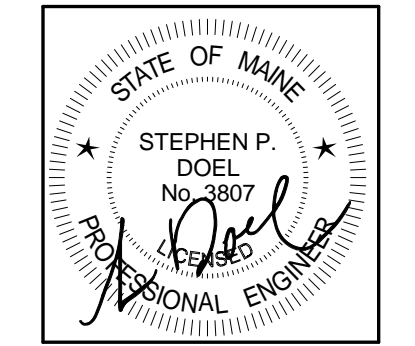


49 DARTMOUTH STREET
PORTLAND, MAINE 04101
207-775-1059
www.pdtarchs.com

COPYRIGHT 2011
PDT Architects
Reuse or reproduction of the contents of this document is not permitted without written permission of PDT Architects.



ADAMS SCHOOL REDEVELOPMENT
Portland, ME



JOB NO.
08-056

DRWN. CHK
JMV SPD

SCALE:
1/4" = 1'-0"

ISSUE
5 MARCH 2012

TITLE
Bldg A Second Floor Mechanical Plan

SHEET
M102