

MUNJOY STREET - END OF BASE LINE

GENERAL LAYOUT KEY

| POINT (ft) | BASELINE N-S (ft) | E-W (ft) | DESCRIPTION | POINT (ft) | BASELINE N-S (ft) | E-W (ft) | DESCRIPTION (ft) |
|------------|-------------------|----------|--------------------------|------------|-------------------|----------|------------------------|
| P-1 | 24.76 N | 11.00 W | PLAYGROUND ENTRANCE, CTR | P-11 | 125.23 N | 7.00 E | BRICK PLAZA, CTR |
| P-2 | 24.76 N | 10.89 E | BEG. ESPLANADE, CTR | P-12 | 128.55 N | 16.00 E | POST LIGHT, CTR |
| P-3 | 45.00 N | 15.89 E | POST LIGHT, CTR | P-13 | 171.36 N | 7.00 E | BENCH AREA, CTR |
| P-4 | 51.15 N | 0.00 E/W | BENCH AREA, CL | P-14 | 238.00 N | 18.00 E | POST LIGHT, CTR |
| P-5 | 51.15 N | 22.70 W | CLIMBING WALL, BTM CTR | P-15 | 257.00 N | 11.10 E | ESPLANADE END, CTR |
| P-6 | 51.15 N | 30.70 W | CLIMBING WALL, TOP CTR | CP-1 | 51.15 N | 15.00 W | SAND AREA, CTR |
| P-7 | 36.11 N | 60.75 W | BENCH PAD, CTR FR | CP-2 | 51.15 N | 39.02 W | PLAYGROUND LAWN, CTR |
| P-8 | 79.89 N | 44.56 W | GATE OPENING, SEE DWG | CP-3 | 79.89 N | 30.75 W | CHILDREN'S GARDEN, CTR |
| P-9 | 79.89 N | 15.00 W | WALK, CTR | | | | |
| P-10 | 79.89 N | 7.00 E | PLAYGROUND ENTRANCE, CTR | | | | |

PLAYGROUND EQUIPMENT TREATMENT SCHEDULE & NOTES

MANUFACTURER:
LANDSCAPE STRUCTURES, INC.
601 7TH STREET SOUTH
DELANO, MN 55328-8605
1-888-574-4678

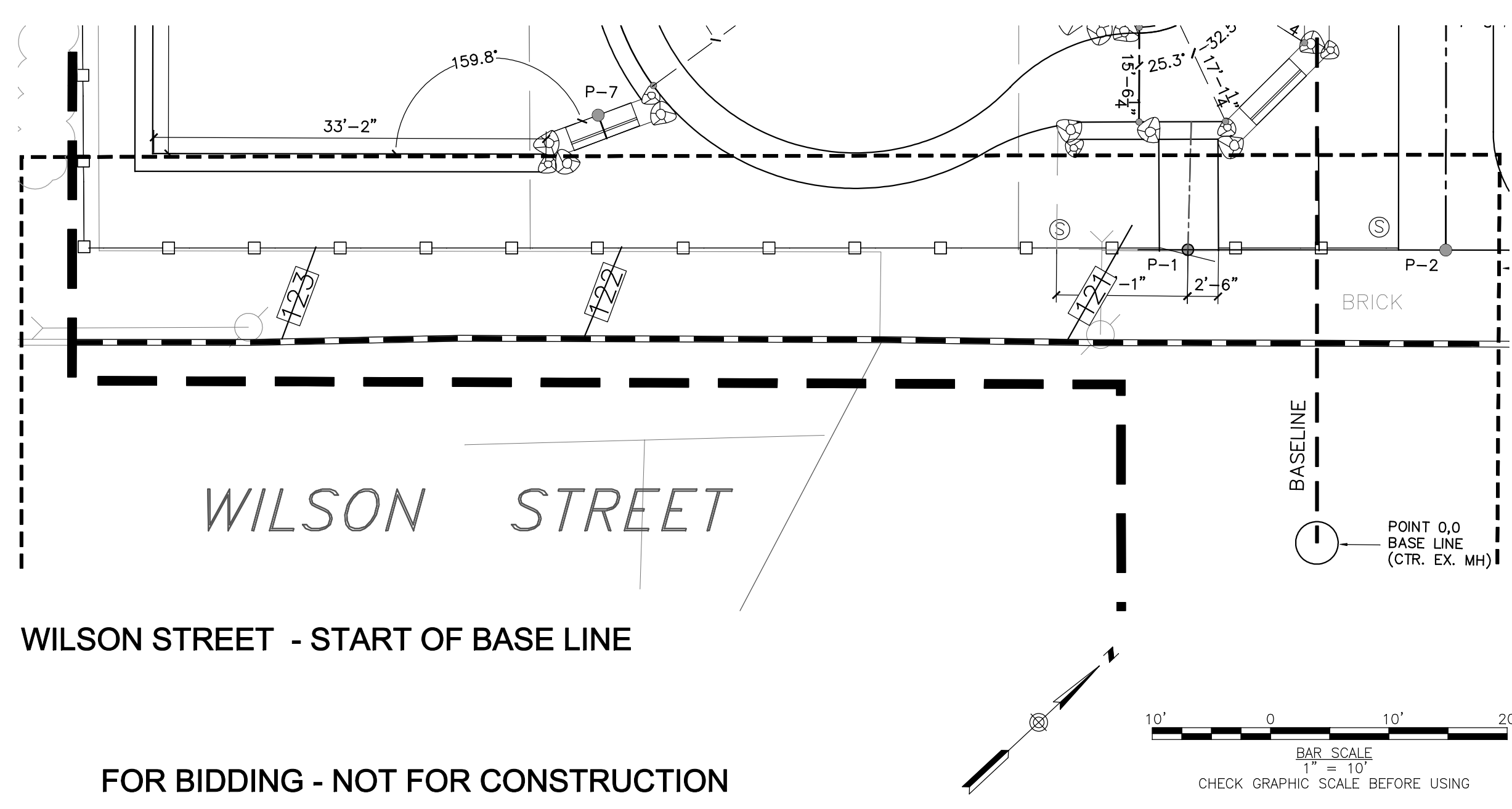
OR APPROVED EQUAL. REFERENCE WRITTEN SPECIFICATIONS SECTION 116800.

| MODEL NO. | QTY | DESCRIPTION | NOTES |
|-----------|-----|---------------------------------------|-------------|
| 115366 | 1 | SPYROSLIDE 72" | |
| 100050 | 2* | ARCH BELT SWING, 8 FT *TWO-BAY SET UP | |
| | 2 | BELT SEAT | SWINGS |
| | 2 | TOT SEAT | SWINGS |
| 173594 | 1 | LOG CRAWL TUNNEL | |
| 152179 | 1 | SADDLE SPINNER | DIRECT BURY |

LAYOUT NOTES:
LAYOUT PERIMETER OF PLAY AREA WITH STAKES PRIOR TO LOCATING PLAY EQUIPMENT TO ENSURE PROPER SAFETY FALL ZONES. ALL WORK SHALL BE IN ACCORDANCE WITH THE WRITTEN SPECIFICATIONS, SECTIONS 116800 AND 321816.13.

General Layout/Staking Notes

1. Point of Beginning (POB) for all construction layout is as shown on the plan.
2. All written dimensions shall prevail; do not scale from drawings.
3. Distances shown on site plans are horizontal distances.
4. All curves shall be true radii without straight segments.
5. Contractor shall field verify all dimensions and field verify location of existing plants and utilities as necessary. Any discrepancies shall be reported immediately to the Architect.
7. Layout staking shall be approved by Architect prior to construction. The contractor shall notify the Architect 48 hours prior to required site visit.
7. See construction details for dimensions of site elements.
8. All dimensions and angles are 90° unless otherwise noted.
9. Changes in the layout may be made by Architect to accommodate design intent or field conditions. No additional payment will be made to contractor for this work.



WILSON STREET - START OF BASE LINE

FOR BIDDING - NOT FOR CONSTRUCTION

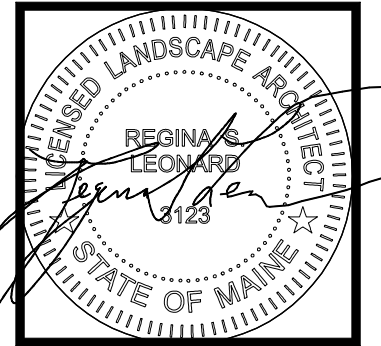
Regina S. Leonard
landscape architecture & design
29 Bridge Street
Topsham, Me 04086
Tel. 207.450.9700
Regina@rsdesign.com

PDT
ARCHITECTS
49 DARTMOUTH STREET
PORTLAND, MAINE 04101
207-775-1059
www.pdtarchs.com

COPYRIGHT 2010
PDT Architects
Reuse or reproduction of the contents of this document is not permitted without written permission of PDT Architects.

Adams School Redevelopment
PORTLAND, MAINE

REV. 1
8/04/11 DRAINAGE



JOB NO.
08-056

DRWN. CHK
RSL PDT

SCALE:
1"=10'

ISSUE
3/05/12

TITLE
PARK LAYOUT PLAN

SHEET
L1