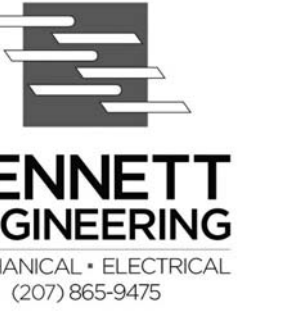




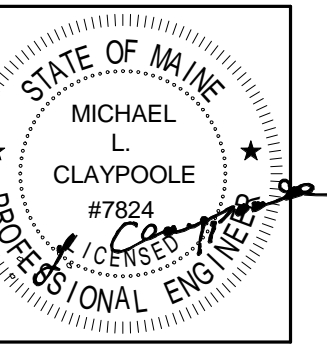
49 DARTMOUTH STREET
PORTLAND, MAINE 04101
207-775-1059
www.pdtarch.com

COPYRIGHT 2011
PDT Architects
Reuse or reproduction of the
contents of this document is not
permitted without written
permission of PDT Architects.



MECHANICAL • ELECTRICAL
(207) 865-9475

ADAMS SCHOOL REDEVELOPMENT
Portland, ME



JOB NO.
08-056

DRWN. CHK
SMR WSBJR

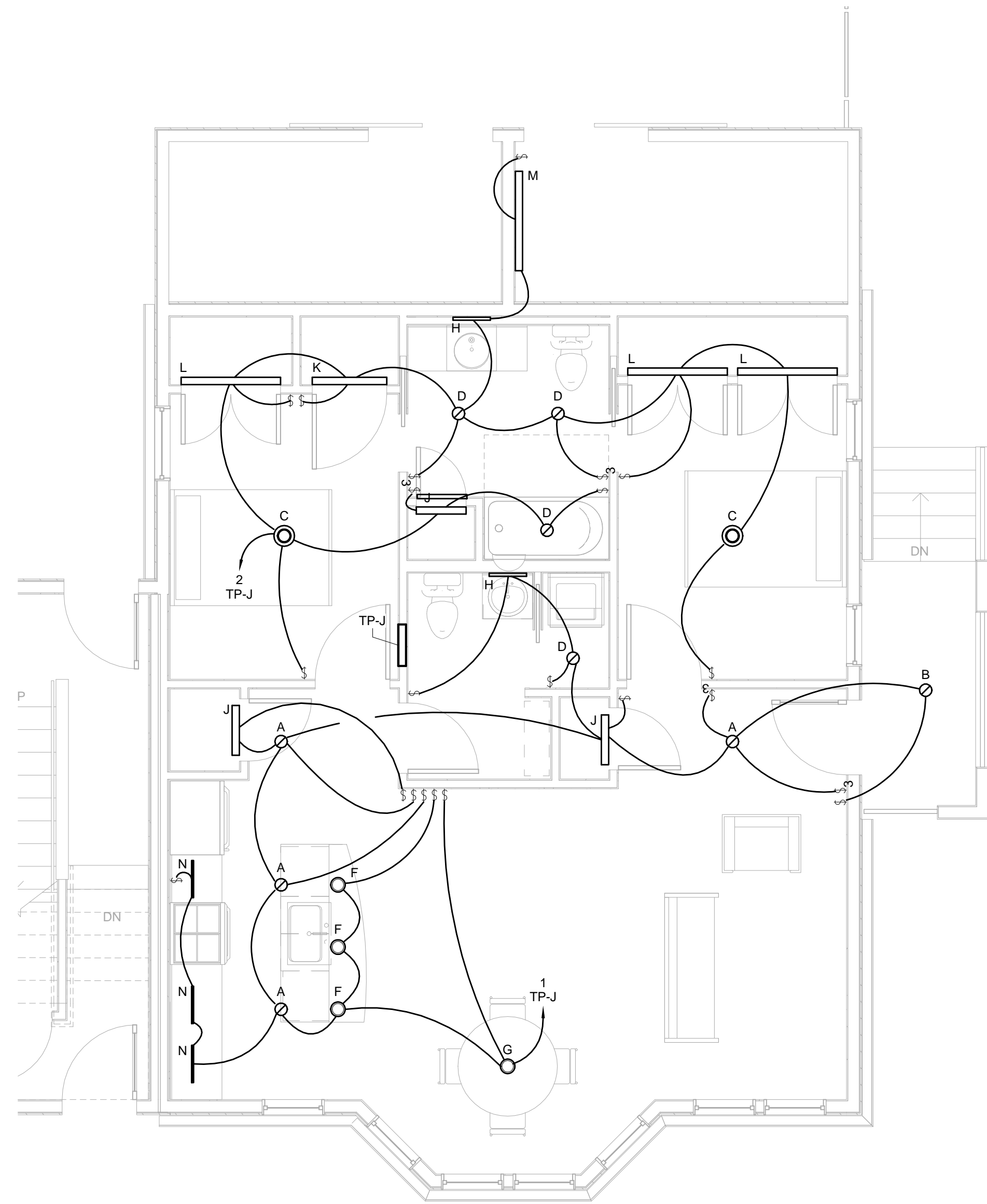
SCALE:
1/4" = 1'-0"

ISSUE
5 MARCH 2012

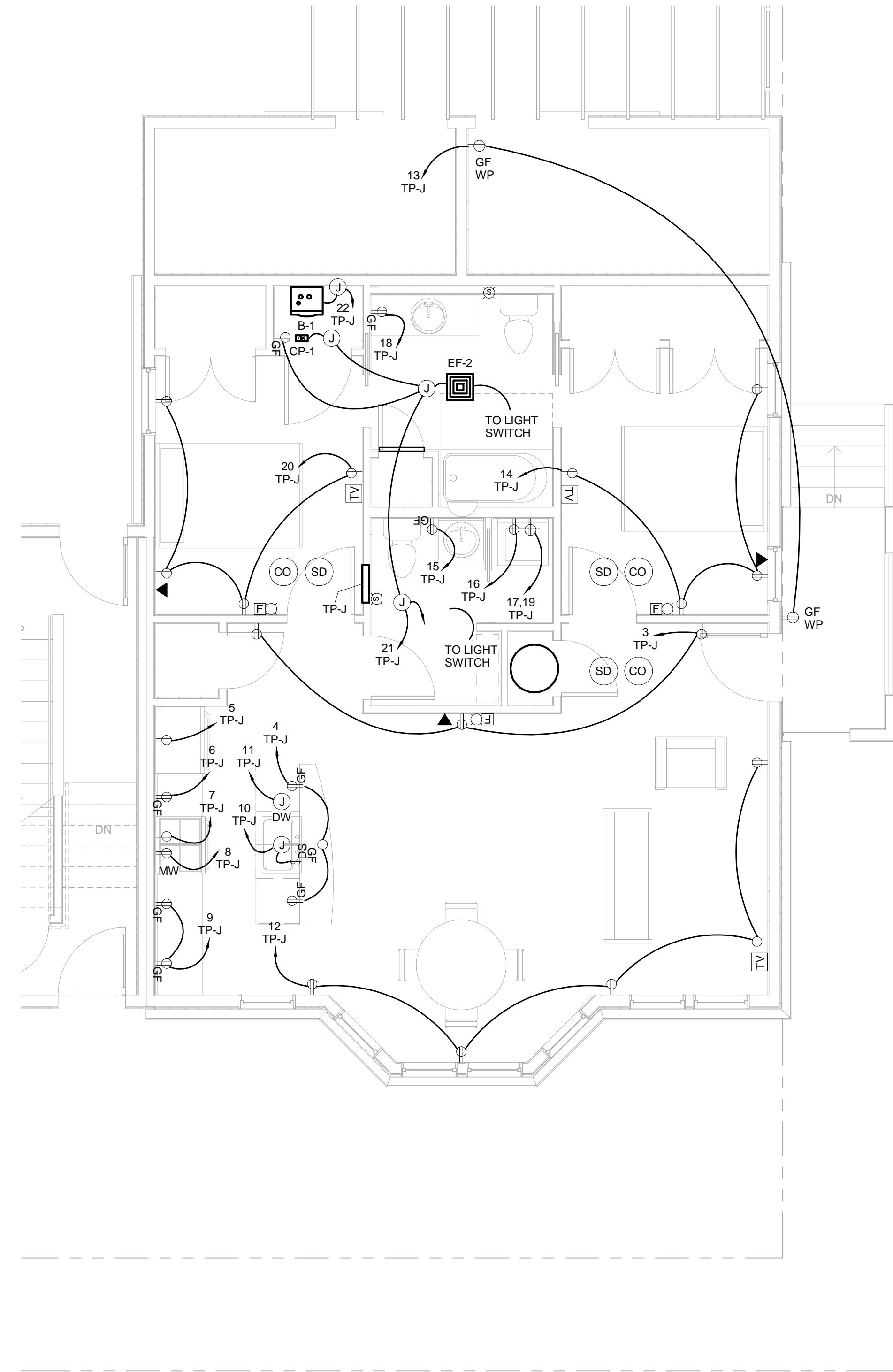
TITLE
Bldg C (Unit J)
Power & Lighting
Plans

SHEET
E401

NOTE:
Buildings B, C & D are similar to Building A, refer
to Architectural drawings for more information.



1 Bldg C (Unit J) 1st Flr Lighting Plan
1/4" = 1'-0"



2 Bldg C (Unit J) 1st Flr Power Plan
1/4" = 1'-0"