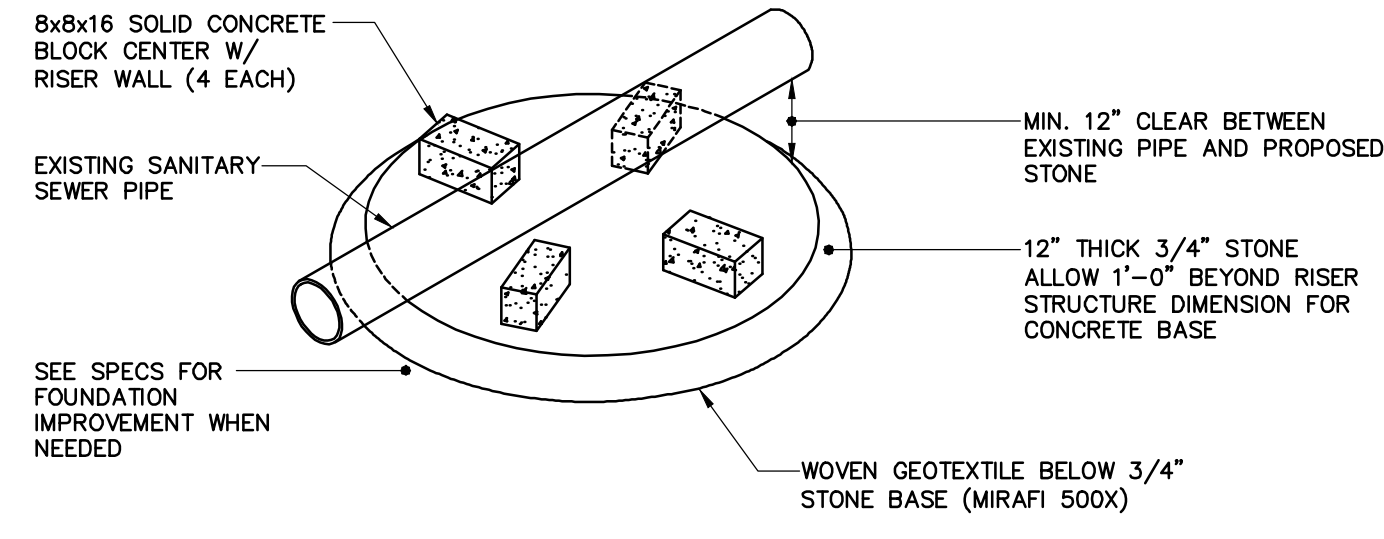
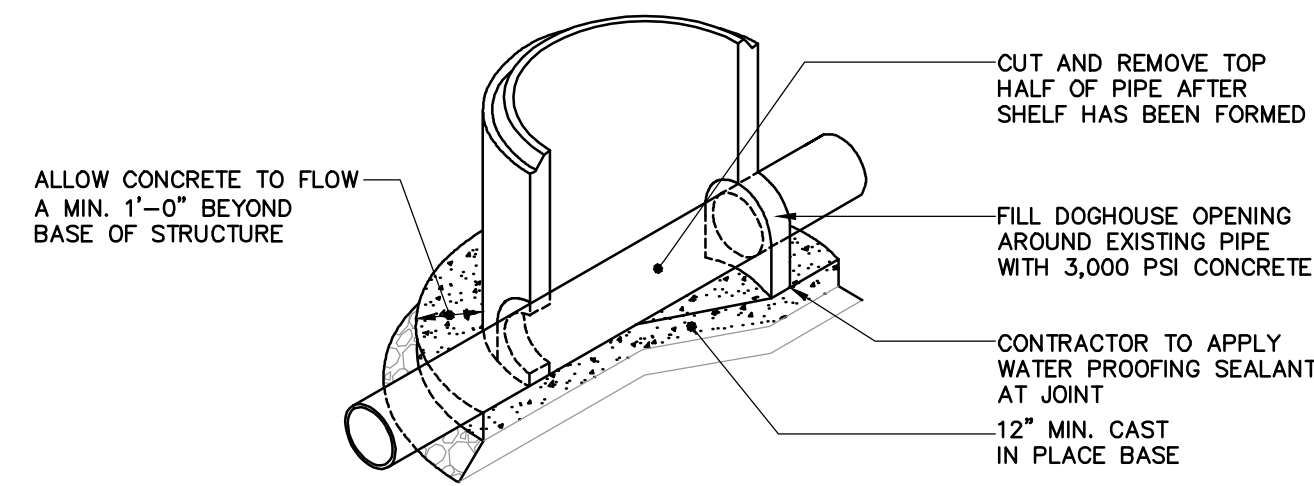


RISER ISOMETRIC VIEW



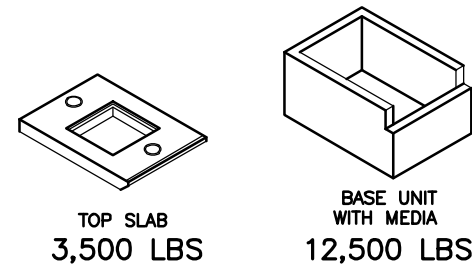
BASE ISOMETRIC VIEW



FOUNDATION SECTION VIEW

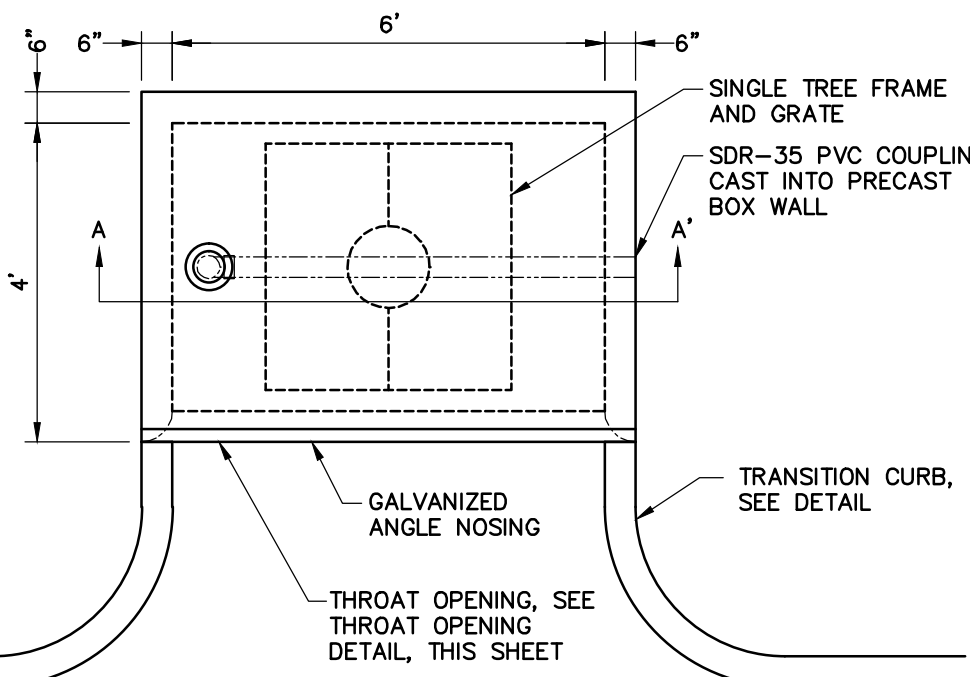
DOGHOUSE MANHOLE DETAIL

N.T.S.

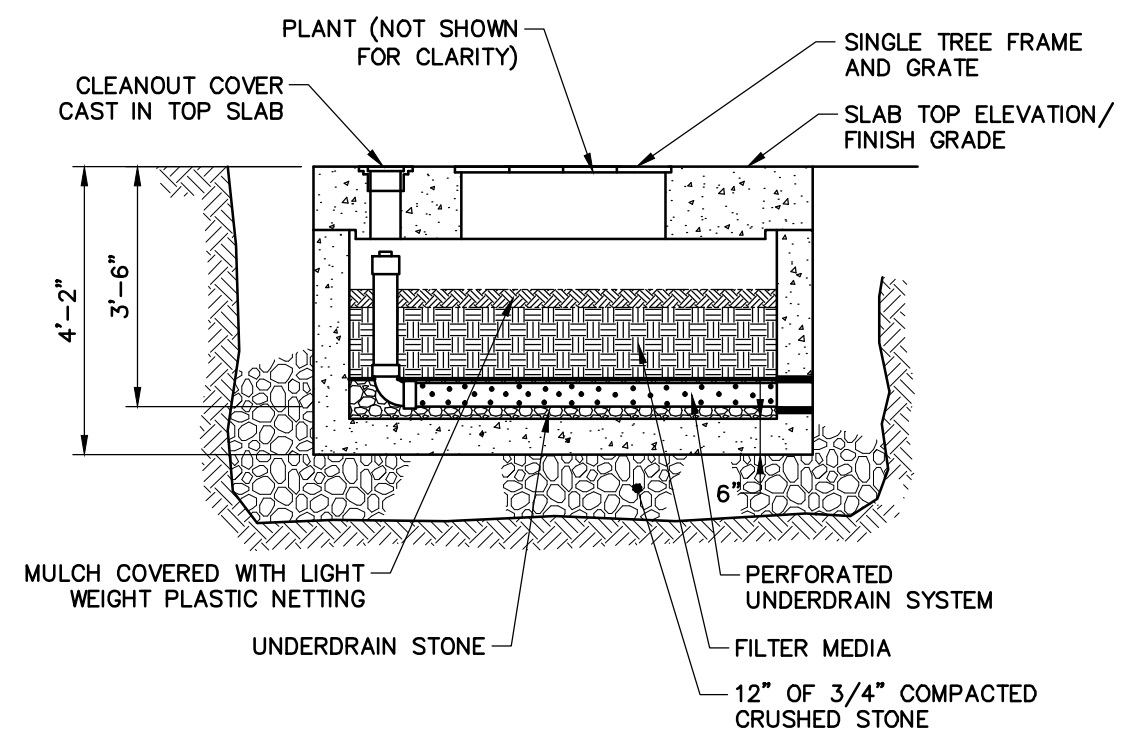


6'x4' UNDERDRAINED BOX FILTER

NOTE:  
1. LISTED WEIGHTS ARE APPROXIMATE. CONFIRM WEIGHTS WITH MANUFACTURER PRIOR TO INSTALLATION.



PLAN



SECTION A-A

NOTE:  
1. UNDERDRAINED BOX FILTER BY FILTERRA®  
2. PLANT SELECTION SHALL BE DWARF FOUNTAIN GRASS - PENNISETUM ALOPECUROIDES, "HAMELN", OR APPROVED EQUAL. PLANT SHALL EXTEND LESS THAN 1.5' ABOVE TOP SLAB OF FILTERRA UNIT.  
3. UNDERDRAINED BOX FILTER SHALL HAVE GALVANIZED NOSING AT CURB EDGE.

UNDERDRAINED BOX FILTER UNIT

N.T.S.

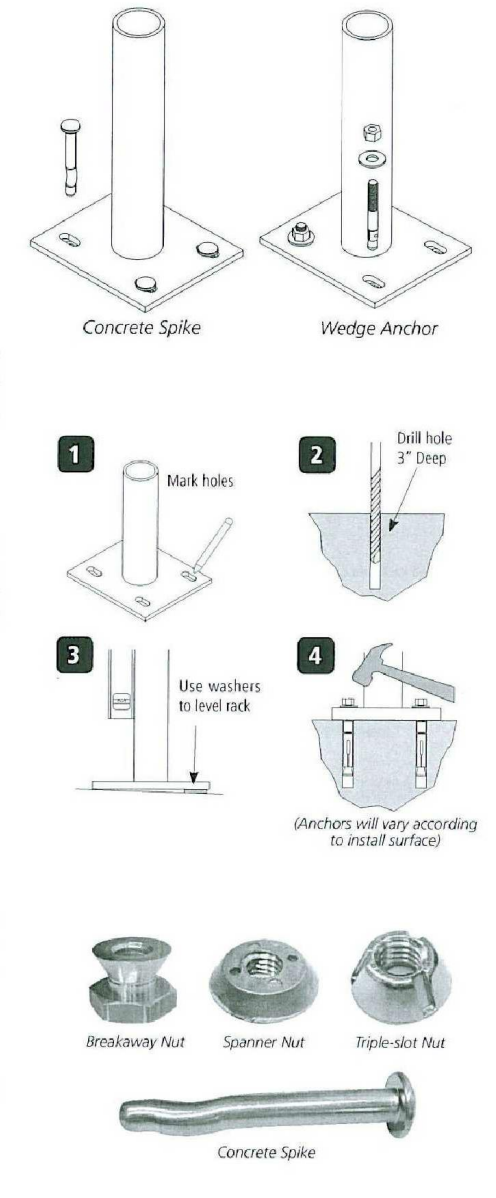
**Tools Needed for Installation**  
Tape Measure  
Mallet or Pencil  
Masonry D-11 Bit  
Drill (Hammer drill recommended)  
Hammer  
Wrench 9/16"  
Level  
Washers (for leveling if necessary)

**Recommended Base Materials:**  
Solid concrete is the best base material for installation. Ask your Dero Rack representative which anchor is appropriate for your application to ensure the proper anchors are shipped with your rack. Be sure nothing is underneath the base material that could be damaged by drilling.

**Installation:**  
3/8" anchors are shipped with the rack. Place the rack in the desired location. Use a marker or pencil to outline the holes of the flange onto the base material. Drill the holes in accordance with the specifications shipped with the anchors. Make sure the holes are at least 6" away from any cracks in the base material.

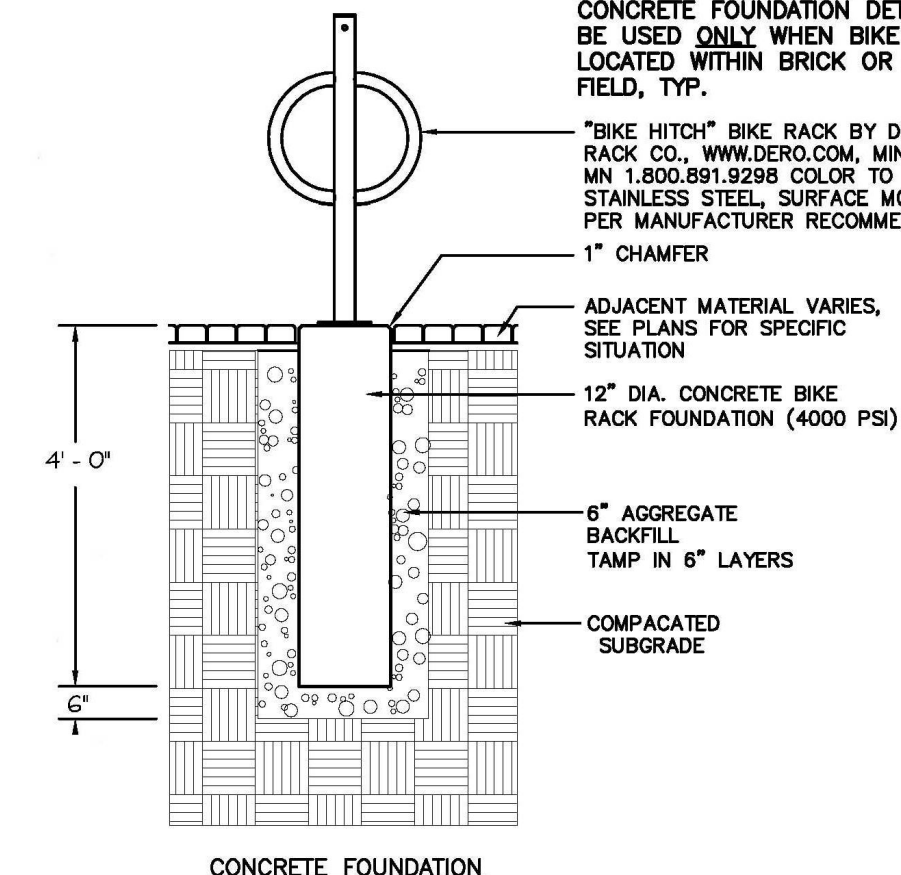
**Tamper Resistant Fasteners**  
The concrete spike is a permanent anchor. The top of the wedge anchor can also be pounded sideways after installation so that it cannot be removed. Other tamper resistant fasteners are also available for purchase.  
When using the special tamper resistant nuts, always set and first tighten the anchors. Once the rack is installed, tighten two nuts from the opposite sides from each other with the tamper resistant fastener. DO NOT OVERTIGHTEN the tamper resistant nut.

If you have any questions about installation or other features of the Bike Rack, please call us toll free at 1-800-388-4915



UNDERDRAINED BOX FILTER THROAT OPENING DETAIL

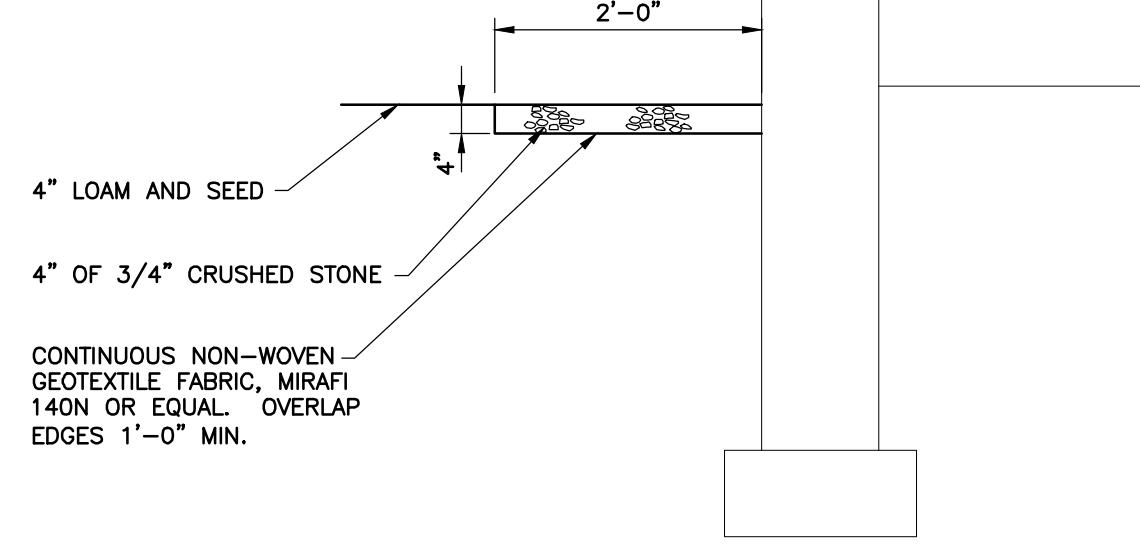
N.T.S.



BIKE RACK DETAIL

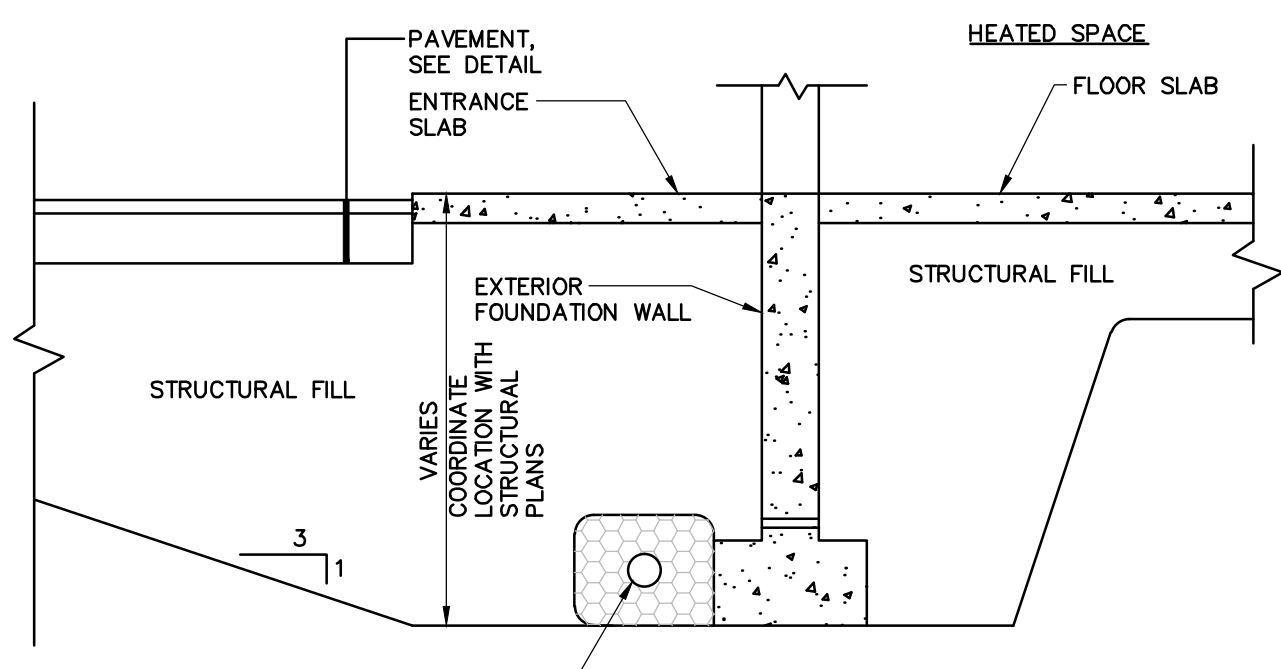
N.T.S.

NOTE:  
STONE DRIP EDGE TO BE GRADED TO ALLOW TO DRAIN AWAY FROM BUILDING (TYP.)



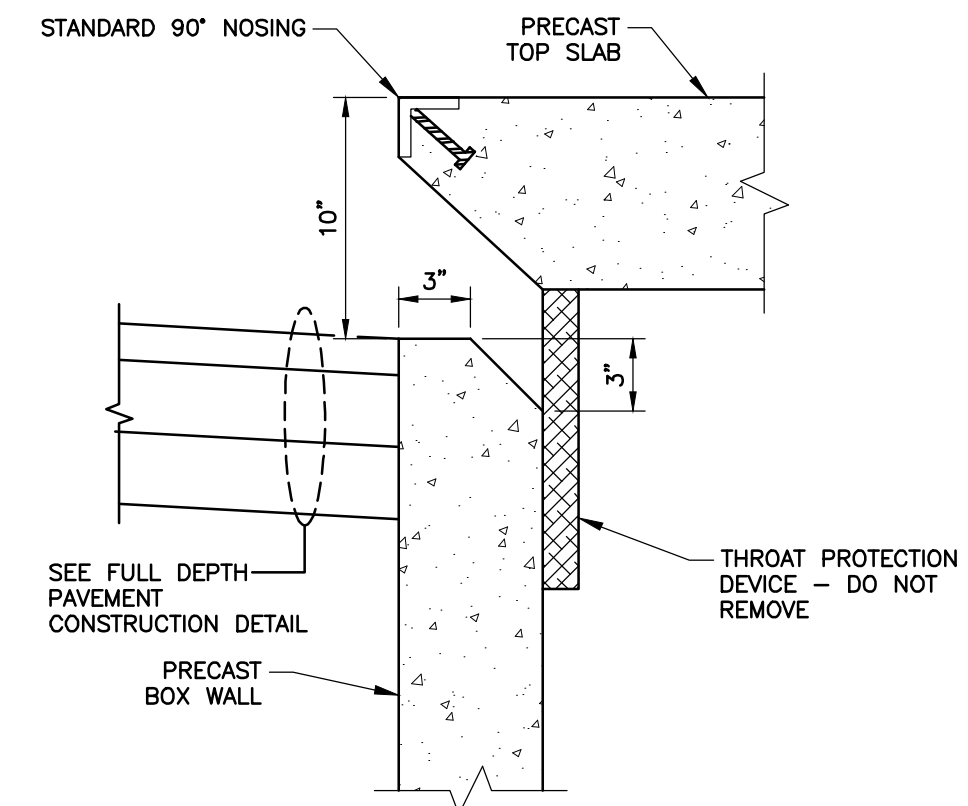
STONE DRIP EDGE DETAIL

N.T.S.



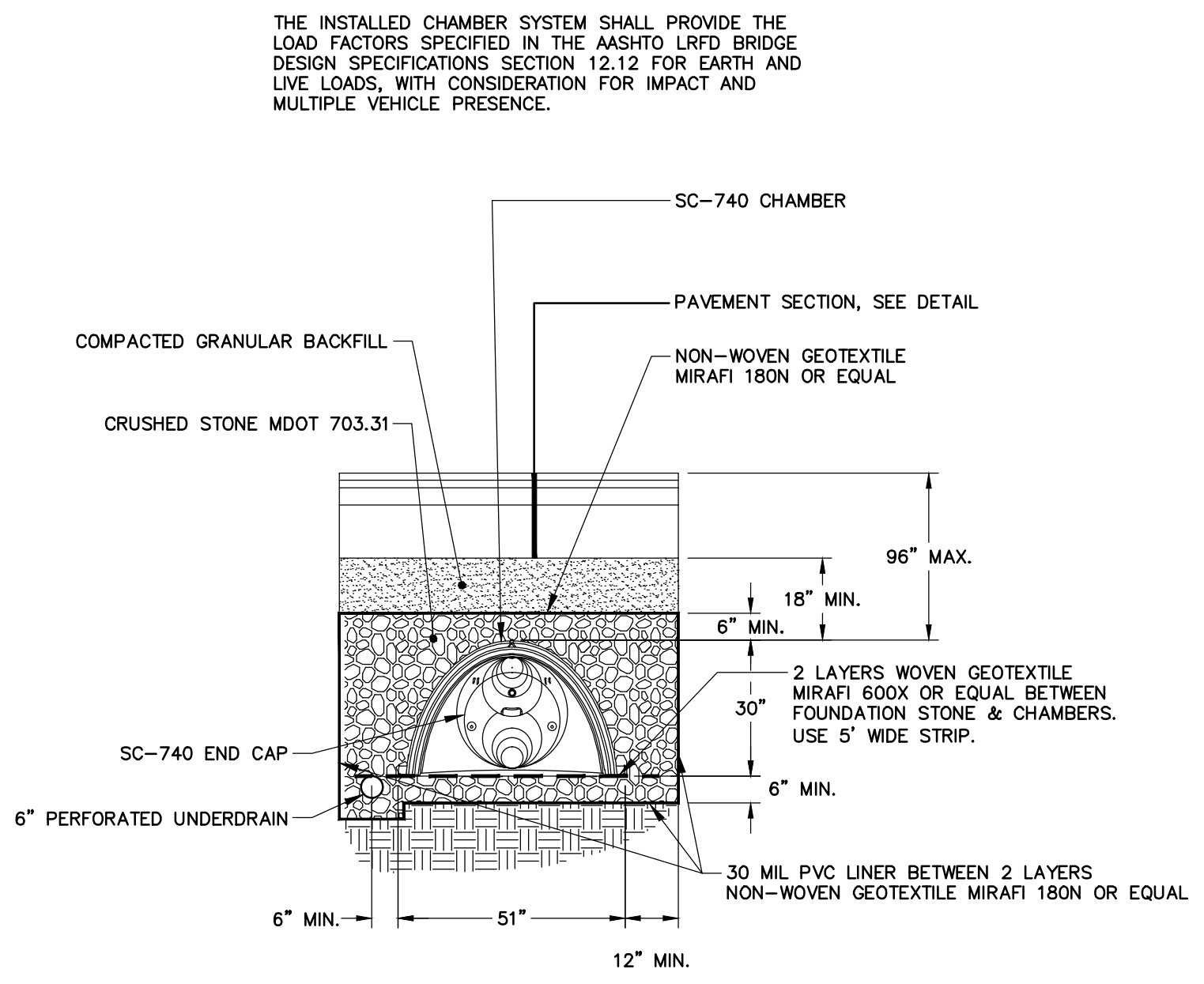
FOUNDATION DRAIN DETAIL

N.T.S.



UNDERDRAINED BOX FILTER THROAT OPENING DETAIL

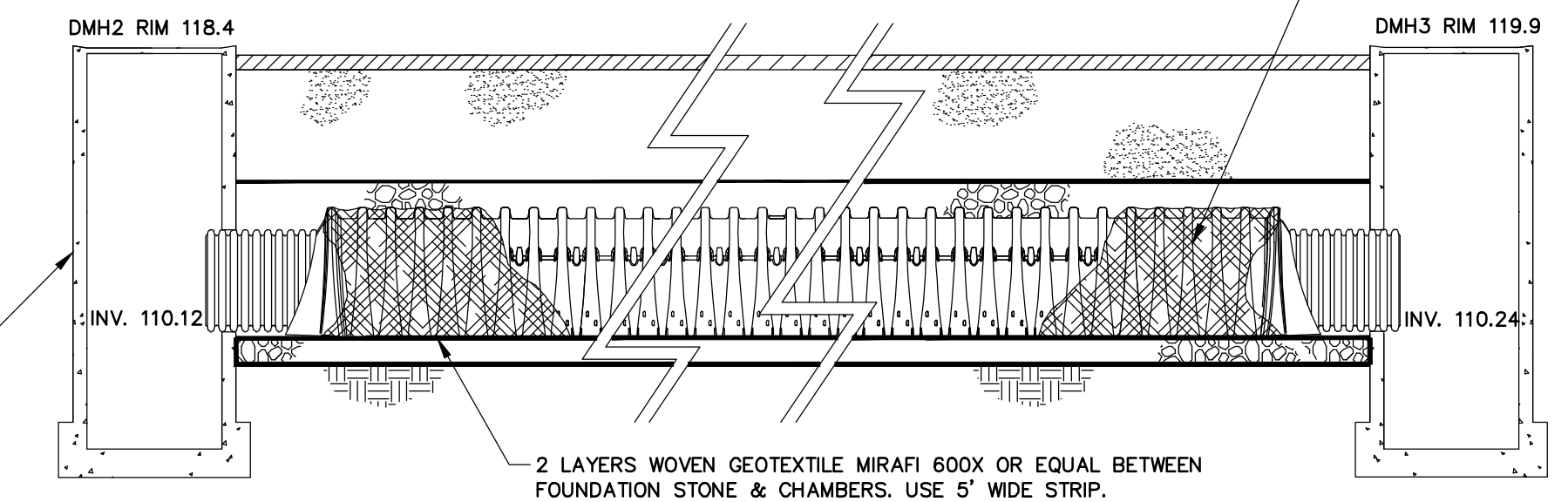
N.T.S.



STORMTECH ISOLATOR ROW SECTION

N.T.S.

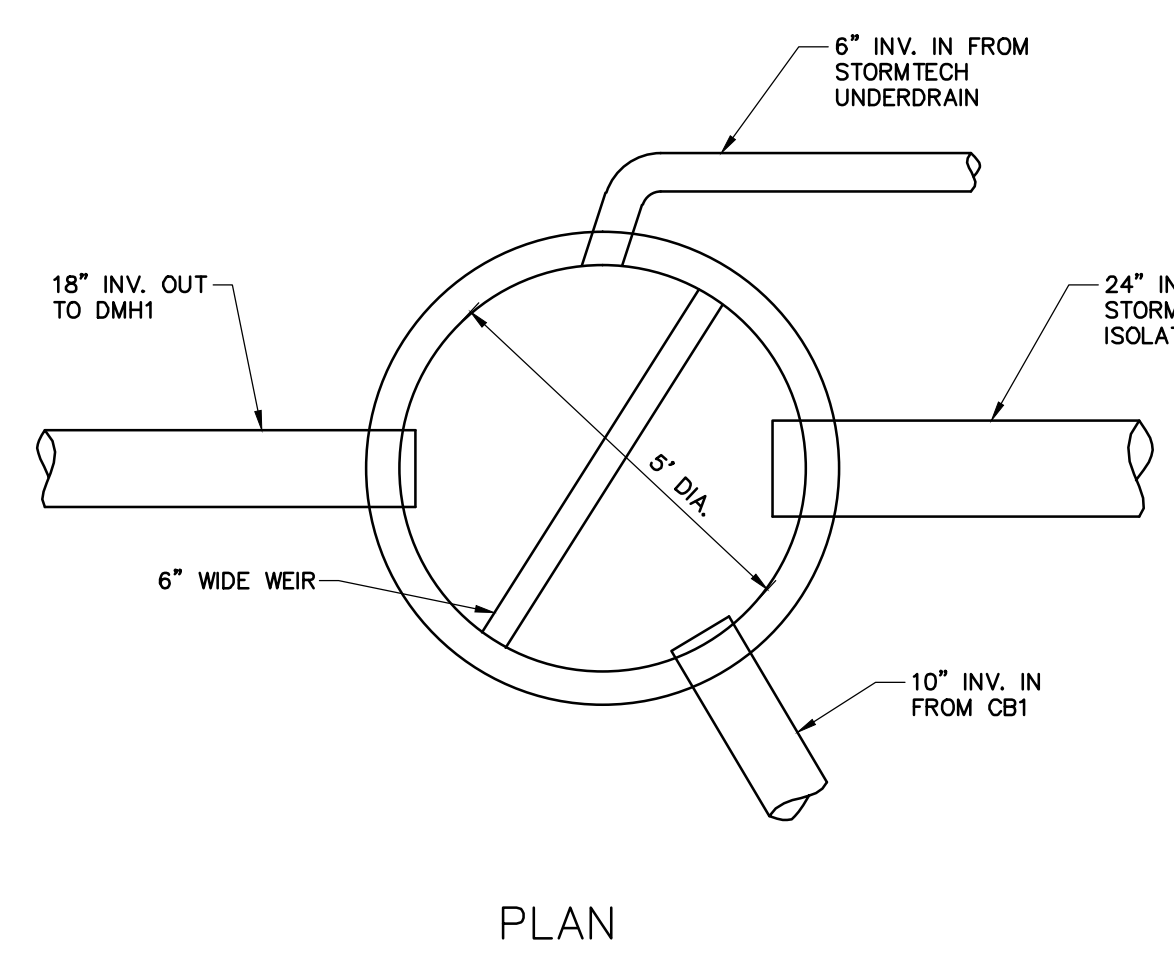
THE INSTALLED CHAMBER SYSTEM SHALL PROVIDE THE LOAD FACTORS SPECIFIED IN THE AASHTO LRFD BRIDGE DESIGN SPECIFICATIONS SECTION 12.12 FOR EARTH AND LIVE LOADS, WITH CONSIDERATION FOR IMPACT AND MULTIPLE VEHICLE PRESENCE.



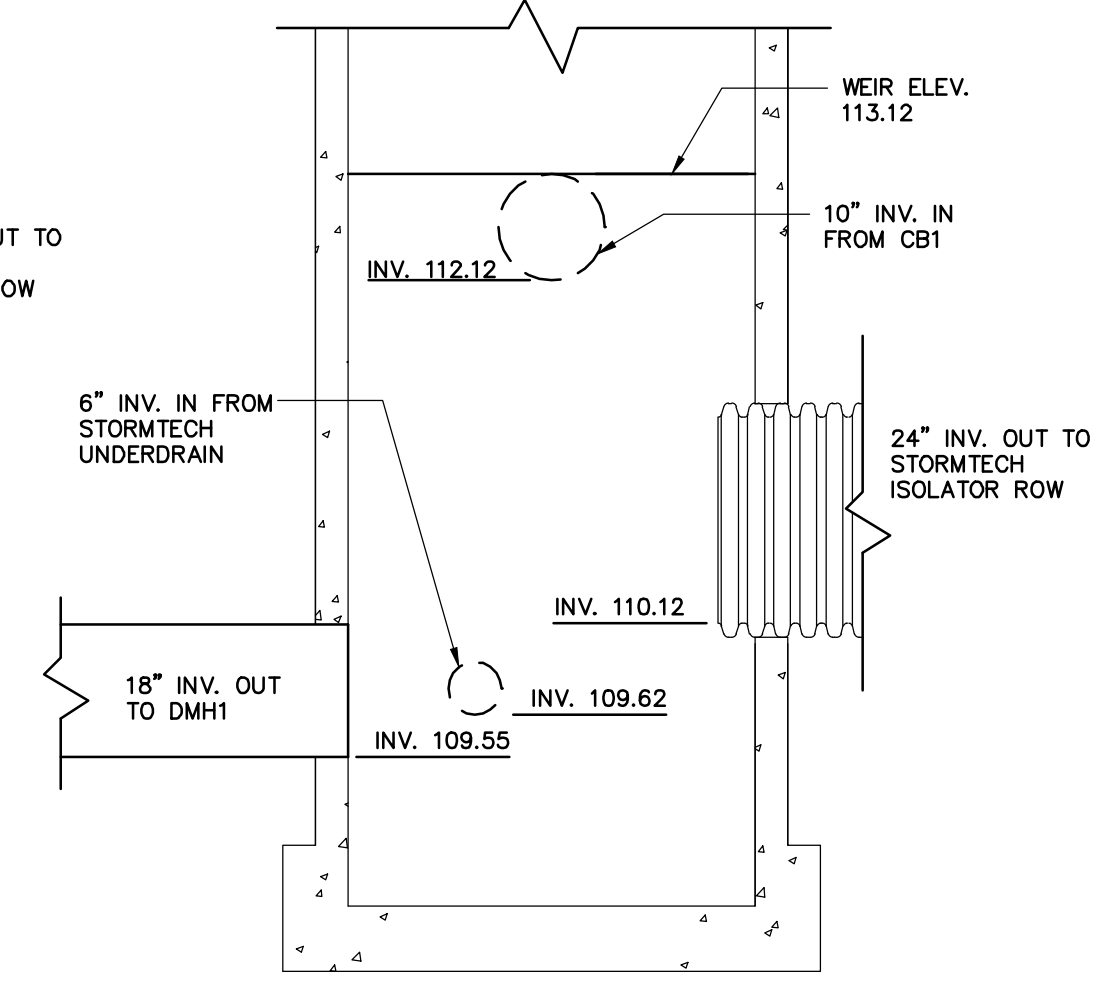
STORMTECH ISOLATOR ROW PROFILE

N.T.S.

NOTE: PROVIDE 30 MIL PVC LINER ON BASE, SIDES, AND ENDS OF CRUSHED STONE SURROUNDING STORMTECH CHAMBERS. PVC LINER SHALL HAVE NON-WOVEN GEOTEXTILE FABRIC, MIRAFLEX 180N, OR EQUAL, UNDERLAYMENT AND OVERLAYMENT. PROVIDE PIPE BOOTS FOR 24\"/>



PLAN



SECTION

DIVERSION MANHOLE (DMH2)

N.T.S.

41 Hutchins Drive  
Portland, Maine 04102  
800.426.4262 | www.woodardcurran.com  
WOODARD & CURRAN  
COMMITMENT & INTEGRITY DRIVE RESULTS

PDT ARCHITECTS  
49 DARTMOUTH STREET  
PORTLAND, MAINE 04101  
207-775-1059  
www.pdtarch.com  
COPYRIGHT 2012  
PDT Architects  
Reuse or reproduction of the contents of this document is not permitted without written permission of PDT Architects.

AVESTA - Adams School Site Redevelopment  
PORTLAND, MAINE

STATE OF MAINE  
DENISE L. CAMERON  
#11279  
LICENSED PROFESSIONAL ENGINEER  
3-9-2012

JOB NO. 08-056

DRWN. CHK. BCM. DLC

SCALE: AS NOTED

ISSUE MARCH 5, 2012

TITLE CIVIL DETAILS - 4

SHEET

C8

Z:\1219804 PDT Arch - Adams School Redevelopment\Drawings\219804-C300.dwg, Feb. 28, 2012 - 10:36am BMCDEVITT