

BMCDEVITT

Z:\1219804 PDT Arch - Adams School Redev\Drawings\219804-C300.dwg, Feb. 28, 2012 - 10:36am

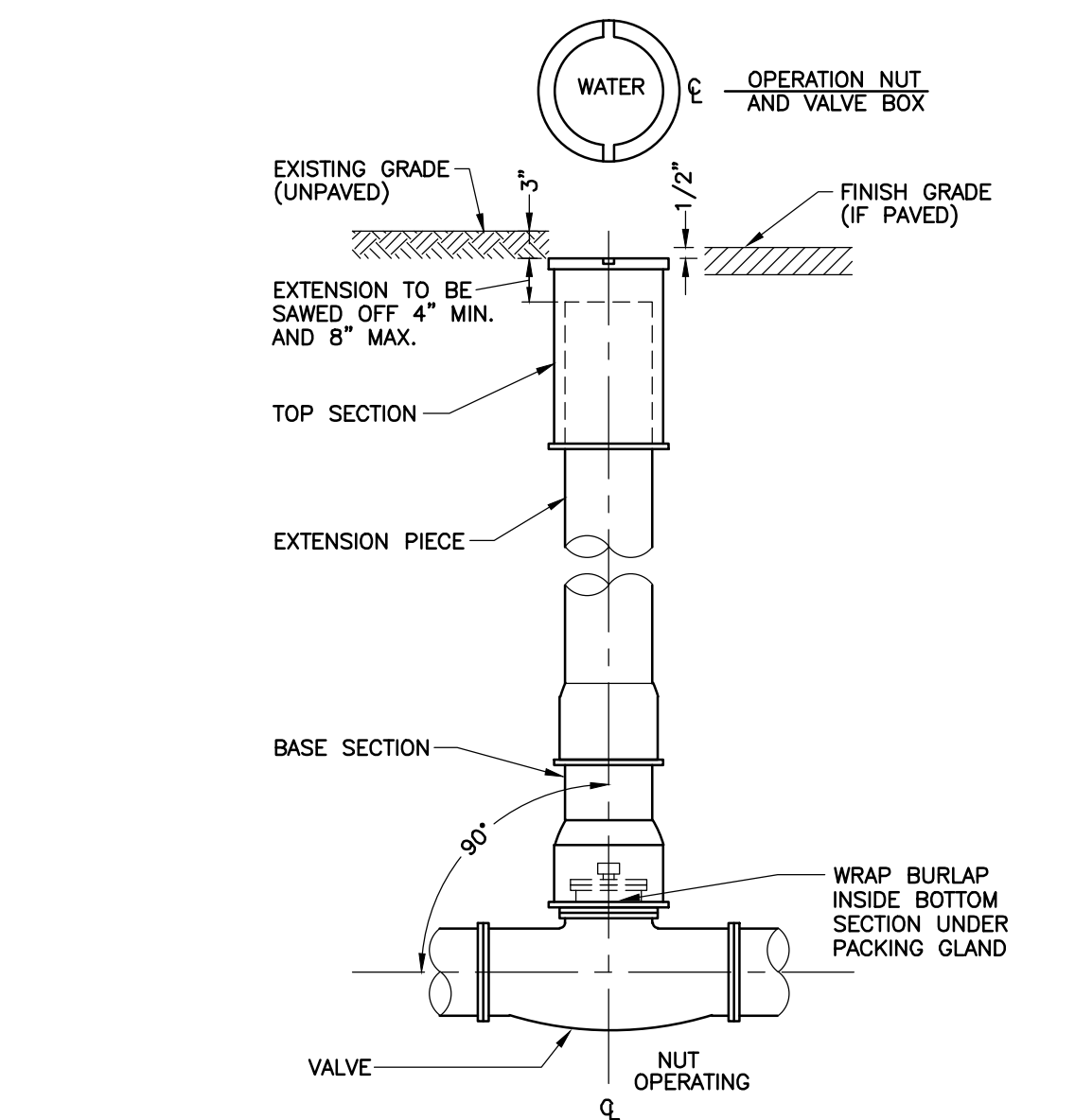
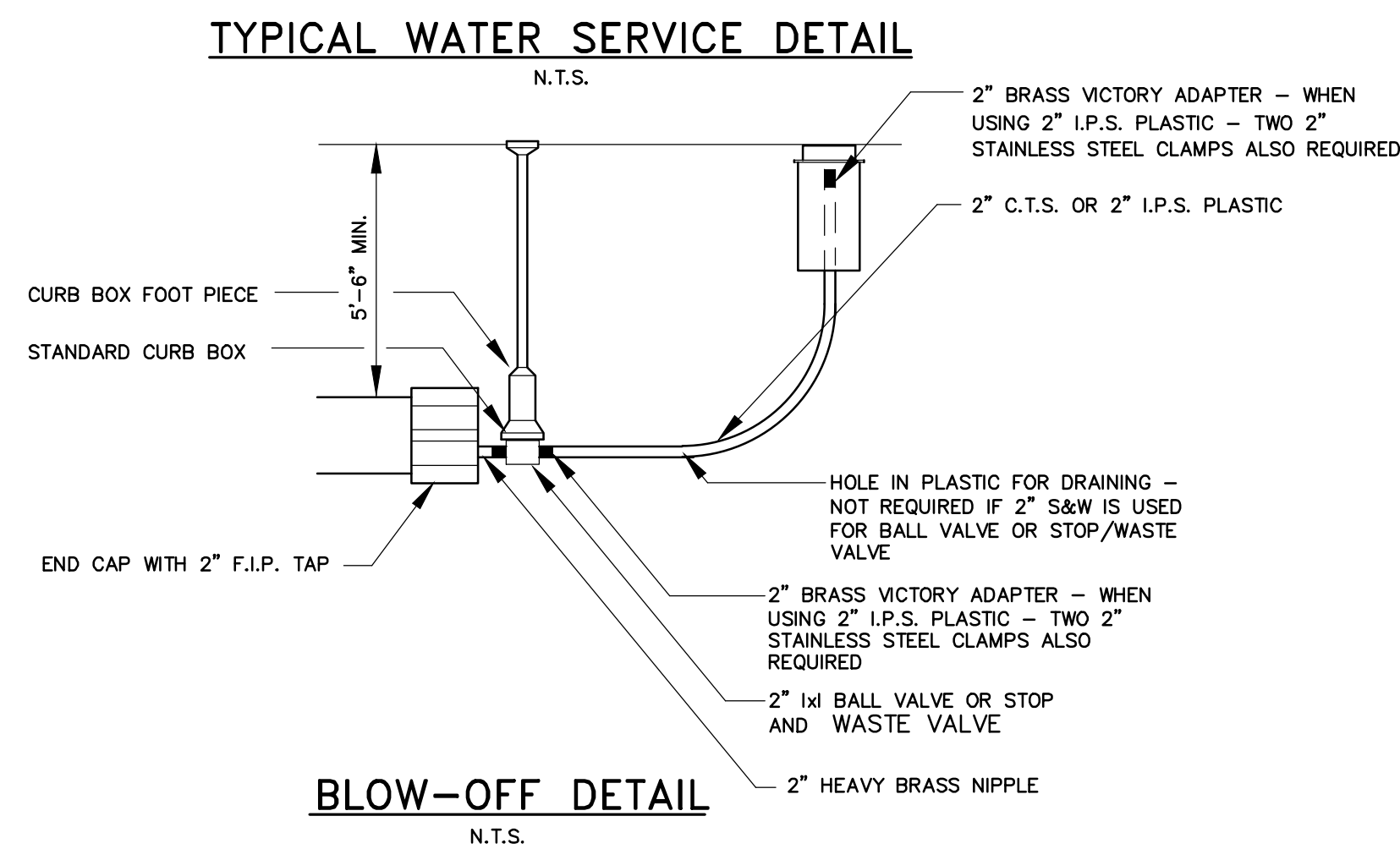
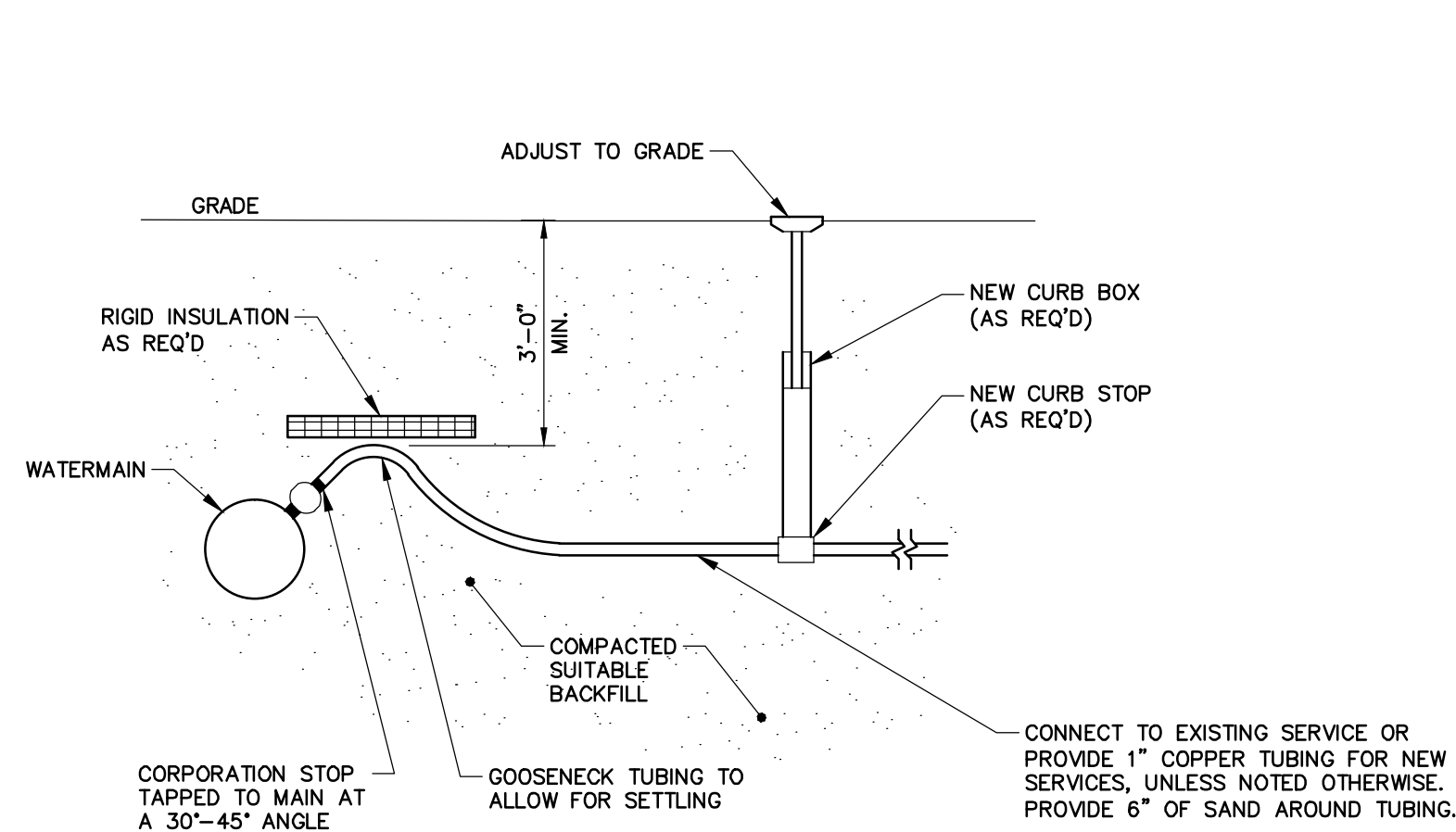
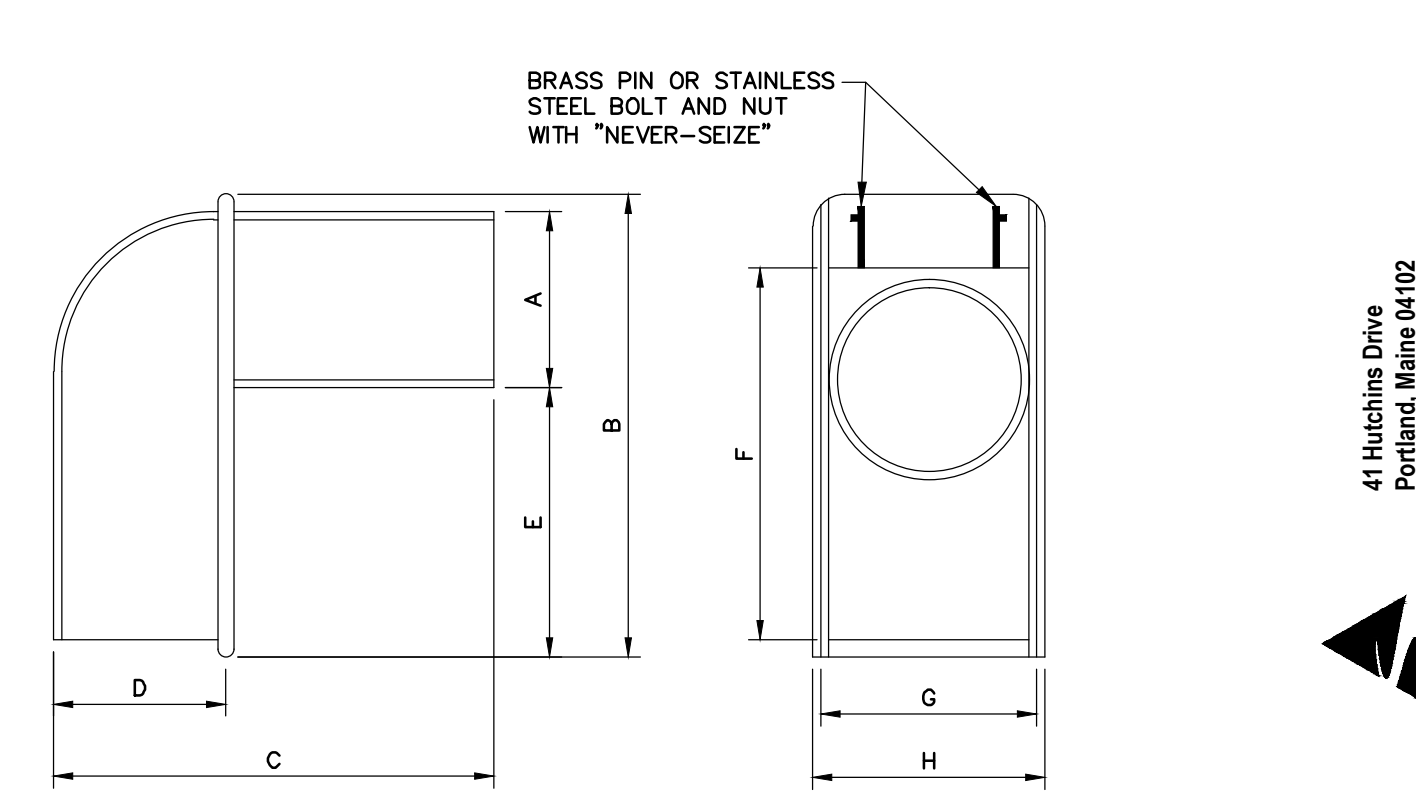
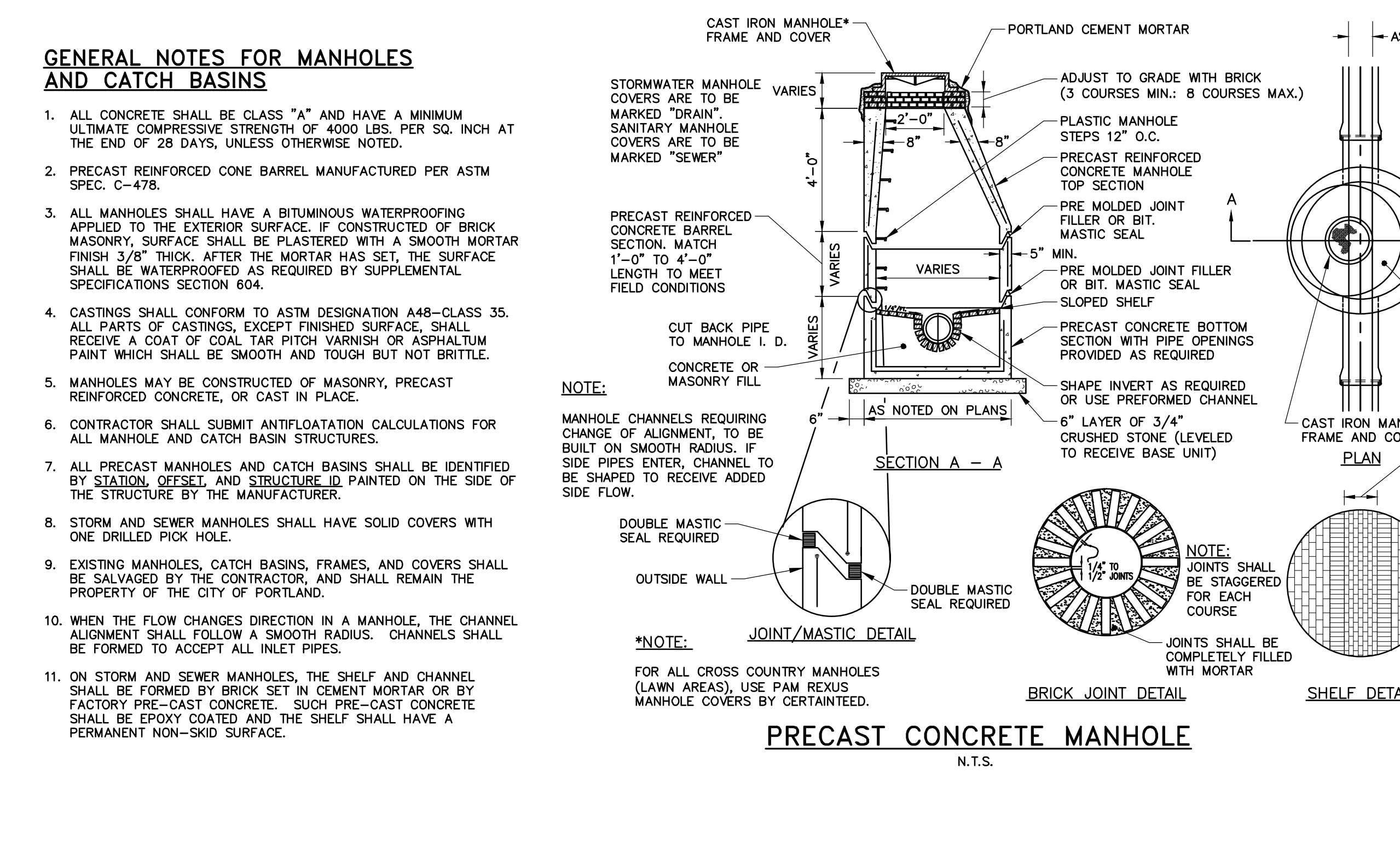
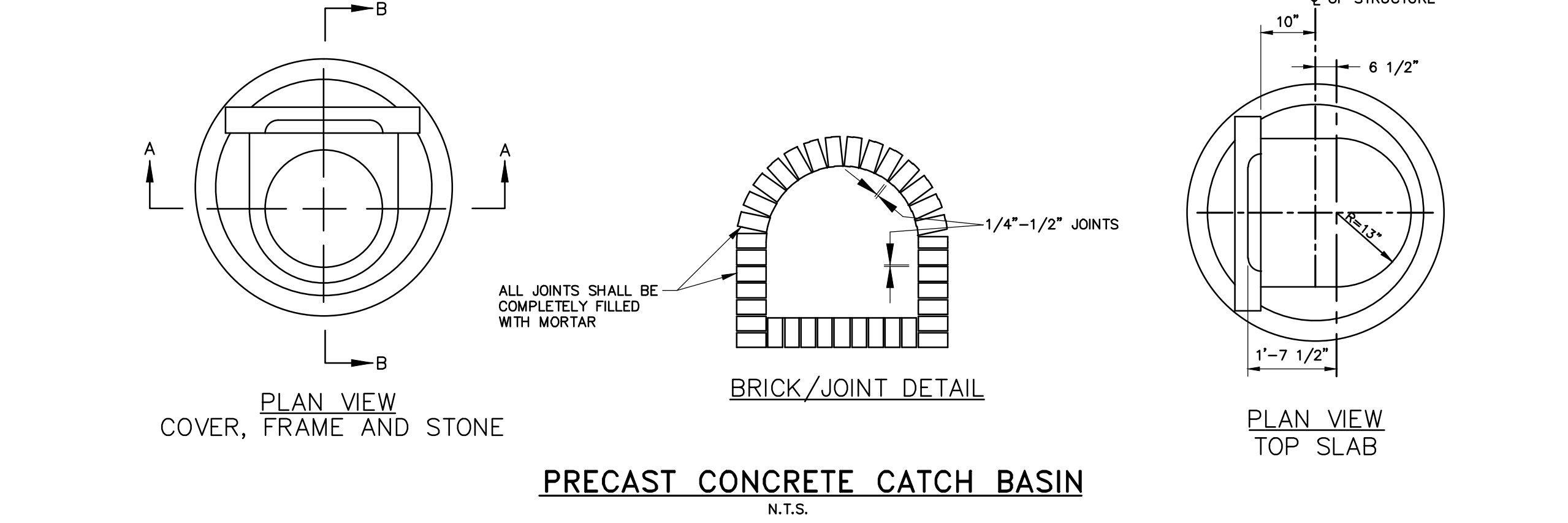
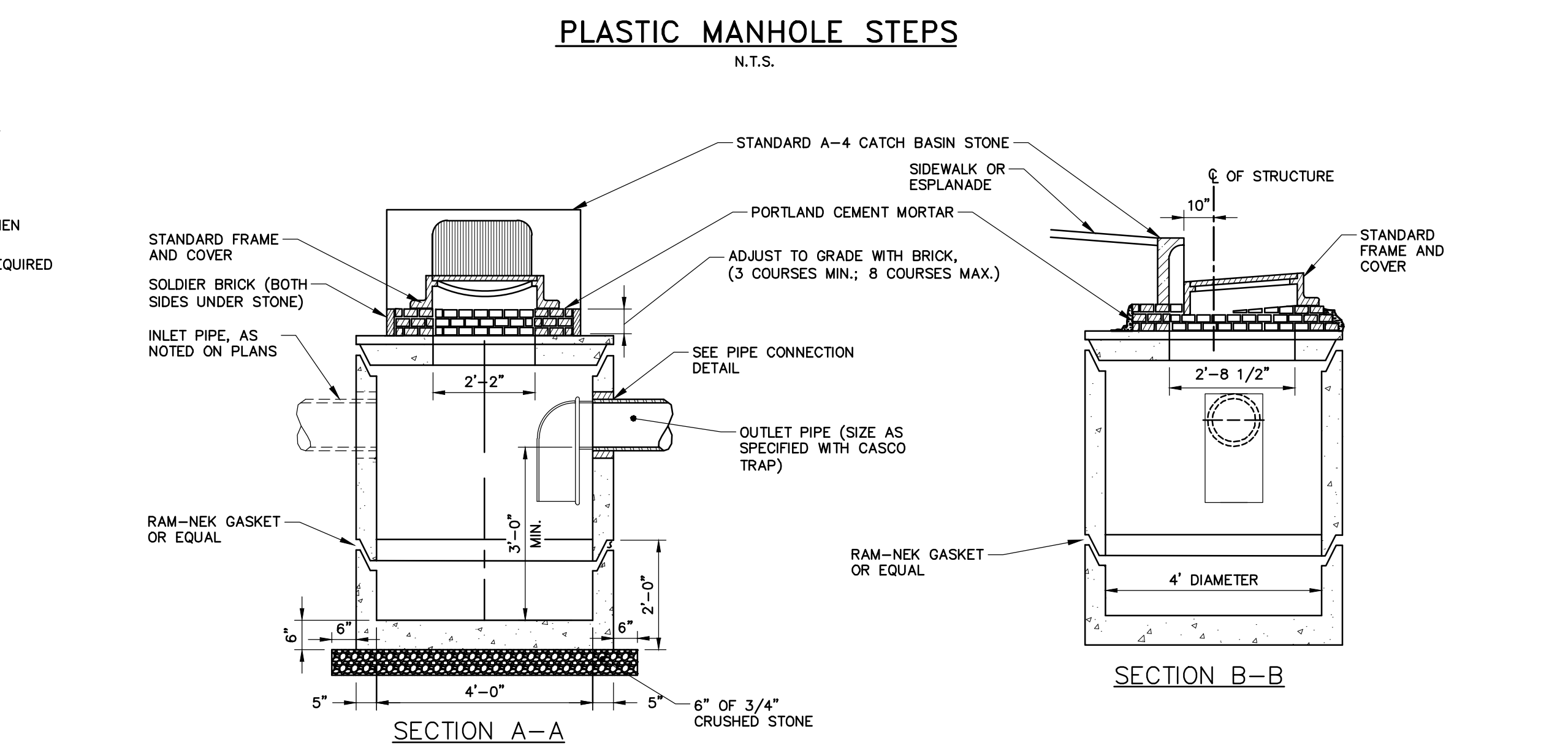
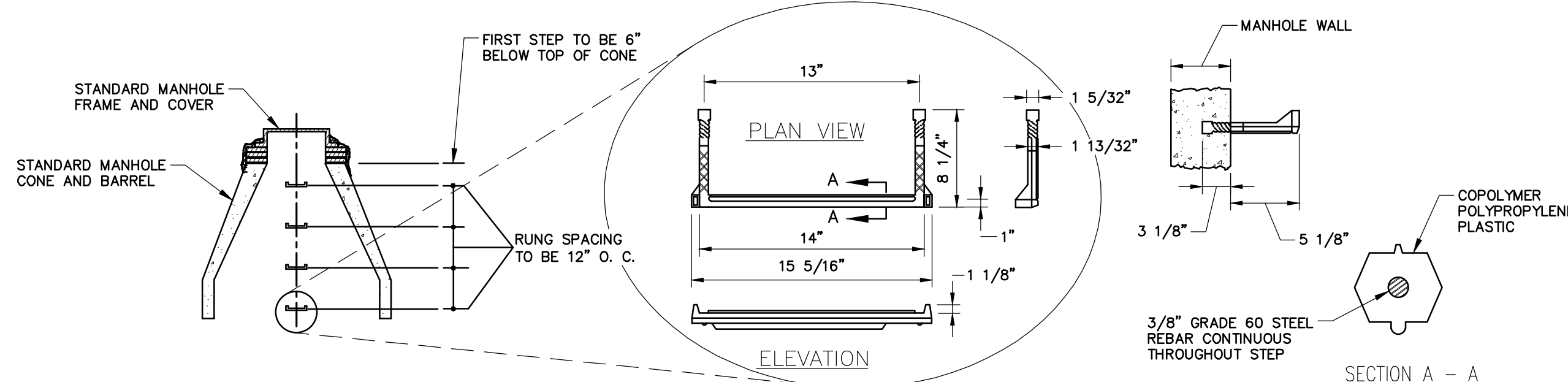
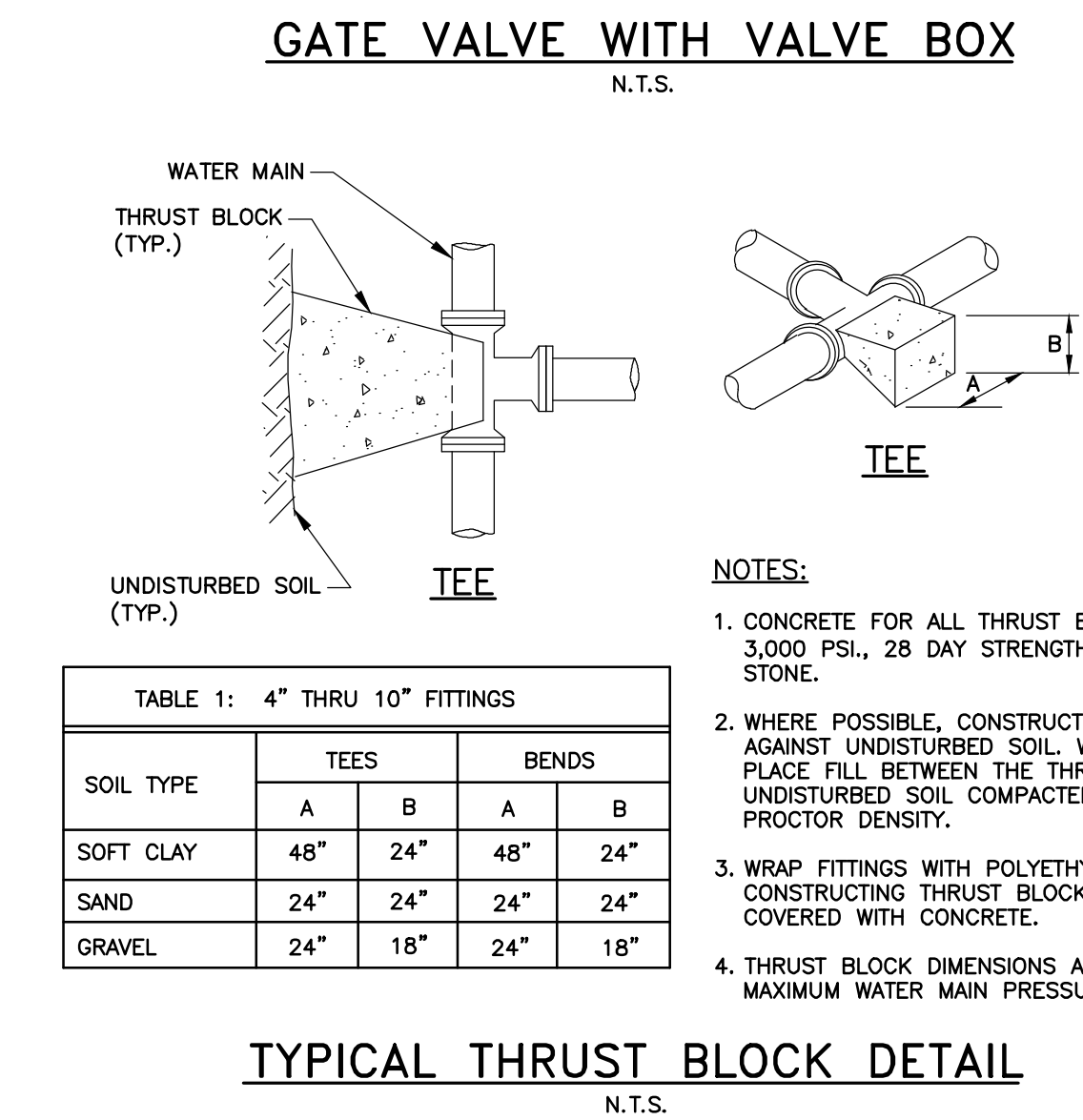


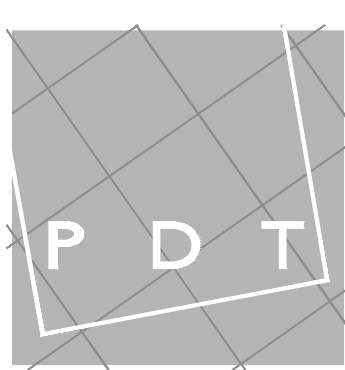
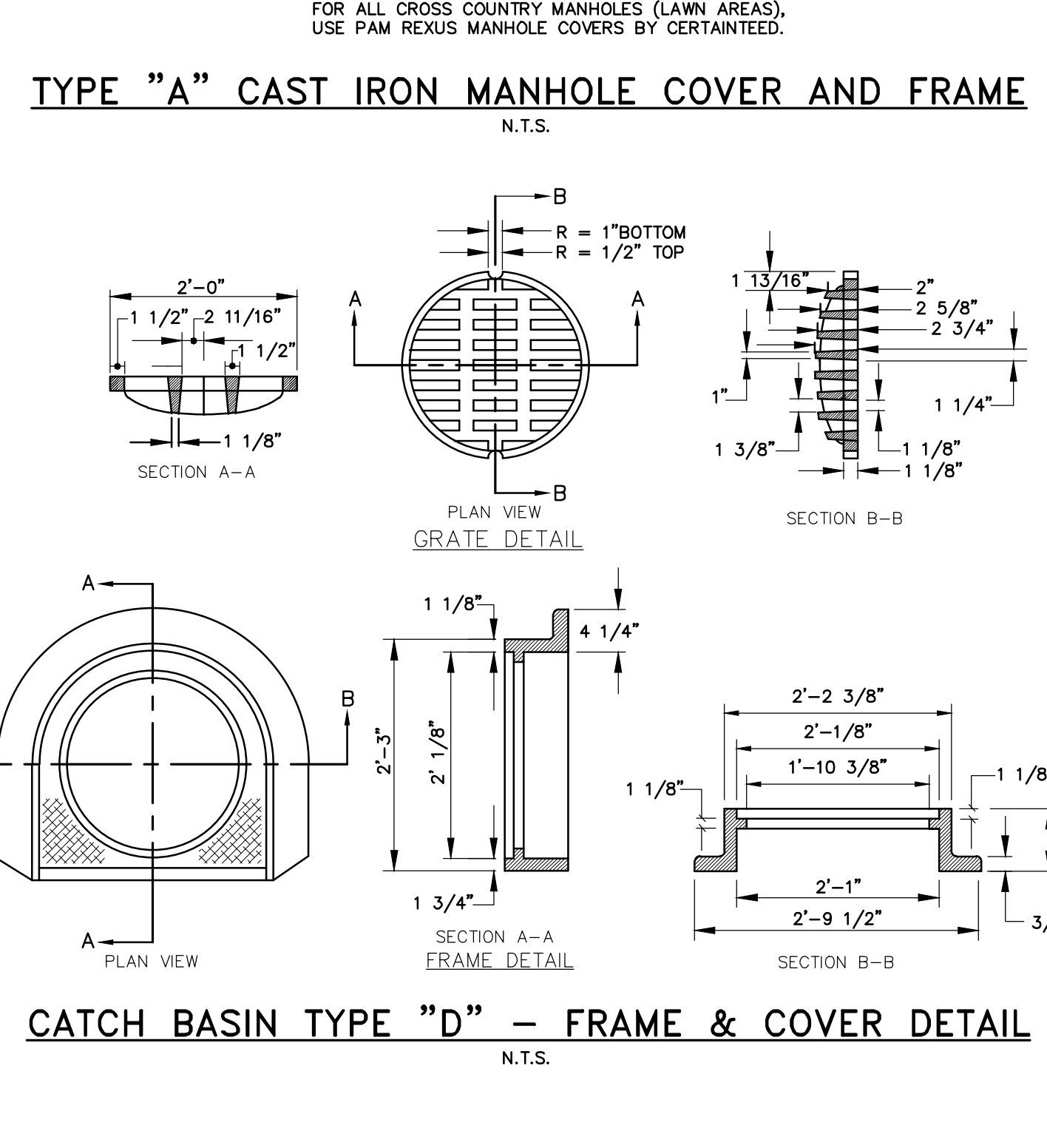
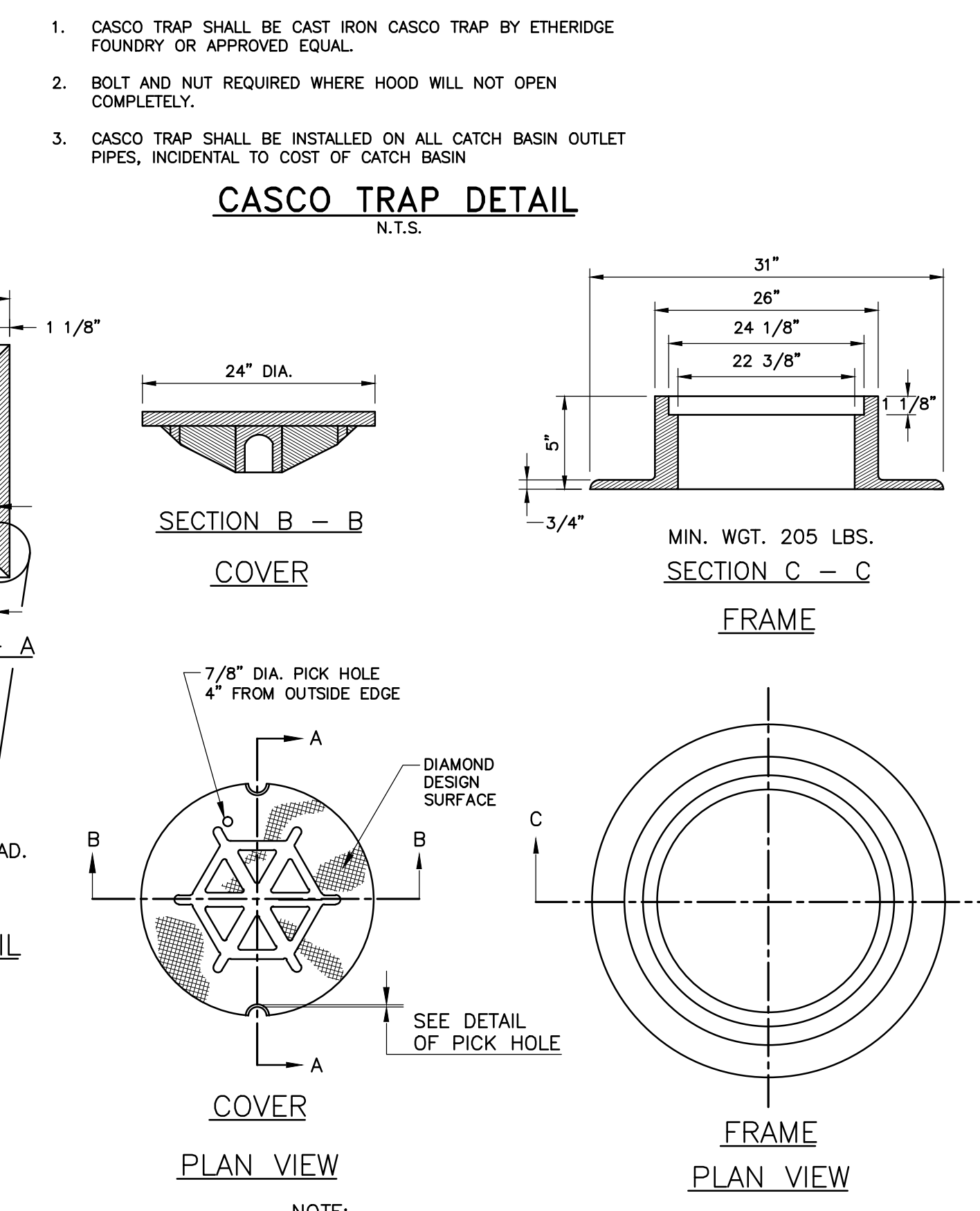
TABLE 1: 4" THRU 10" FITTINGS

SOIL TYPE	TEES		BENDS	
	A	B	A	B
SOFT CLAY	48"	24"	48"	24"
SAND	24"	24"	24"	24"
GRAVEL	24"	18"	24"	18"



NOTE:

- CASCO TRAP SHALL BE CAST IRON CASCO TRAP BY ETHERIDGE FOUNDRY OR APPROVED EQUAL.
- BOLT AND NUT REQUIRED WHERE HOOD WILL NOT OPEN COMPLETELY.
- CASCO TRAP SHALL BE INSTALLED ON ALL CATCH BASIN OUTLET PIPES, INCIDENTAL TO COST OF CATCH BASIN.



**ARCHITECTS**  
49 DARTMOUTH STREET  
PORTLAND, MAINE 04101  
207-775-1059  
www.pdtarch.com

**WOODWARD & CURRAN**  
COMMITMENT & INTEGRITY DRIVE RESULTS

**AVESTA - Adams School Site Redevelopment**  
PORTLAND, MAINE

REUSE OR REPRODUCTION OF THE CONTENTS OF THIS DOCUMENT IS NOT PERMITTED WITHOUT WRITTEN PERMISSION OF PDT ARCHITECTS.

**STATE OF MAINE**  
DENISE L. CAMERON  
#11279  
LICENSED PROFESSIONAL ENGINEER  
3-9-2012

JOB NO. 08-056

DRWN. CHK BCM DLC

SCALE: AS NOTED

ISSUE MARCH 5, 2012

TITLE CIVIL DETAILS - 1

SHEET C5