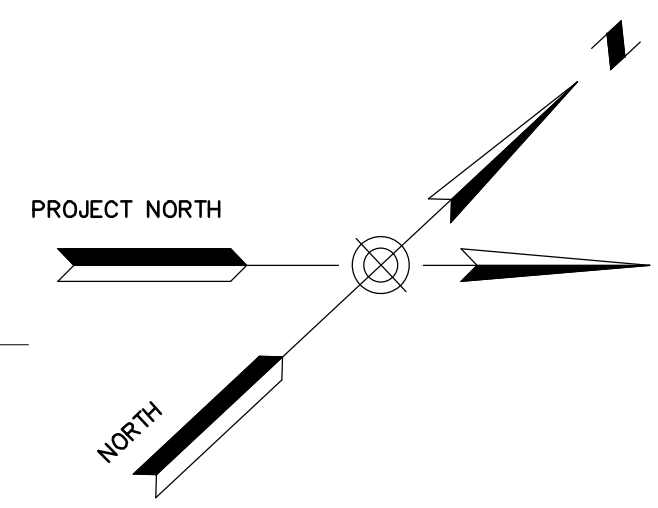
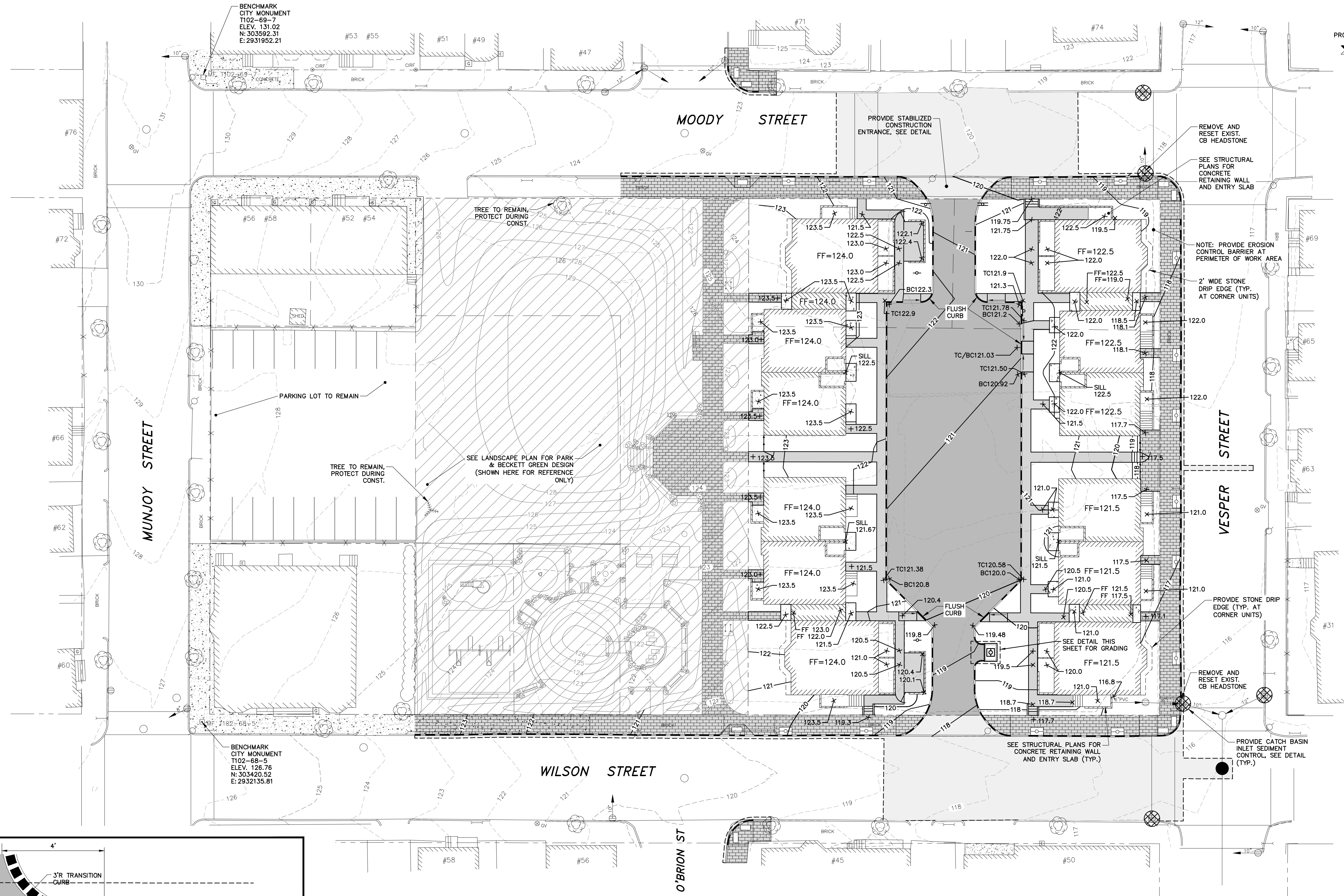


BMCDEVITT

Z:\1219804 PDT Arch - Adams School Redev\Drawings\219804-C200A.dwg, Feb 28, 2012 - 10:38am



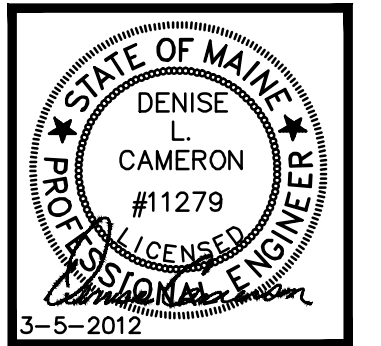
41 Hutchins Dr.
Portland, Maine 04102
800.426.4262 | www.woodardcurran.com

WOODARD & CURRAN
COMMITMENT & INTEGRITY DRIVE RESULTS



COPYRIGHT 2012
PDT Architects
Reuse or reproduction of the
contents of this document is not
permitted without written
permission of PDT Architects.

AVESTA - Adams School Site Redevelopment
PORTLAND, MAINE



JOB NO.
08-056

DRWN. CHK
BCM DLC

SCALE:
1" = 20'

ISSUE
MARCH 5, 2012

TITLE
GRADING AND
EROSION CONTROL
PLAN

SHEET

C3

