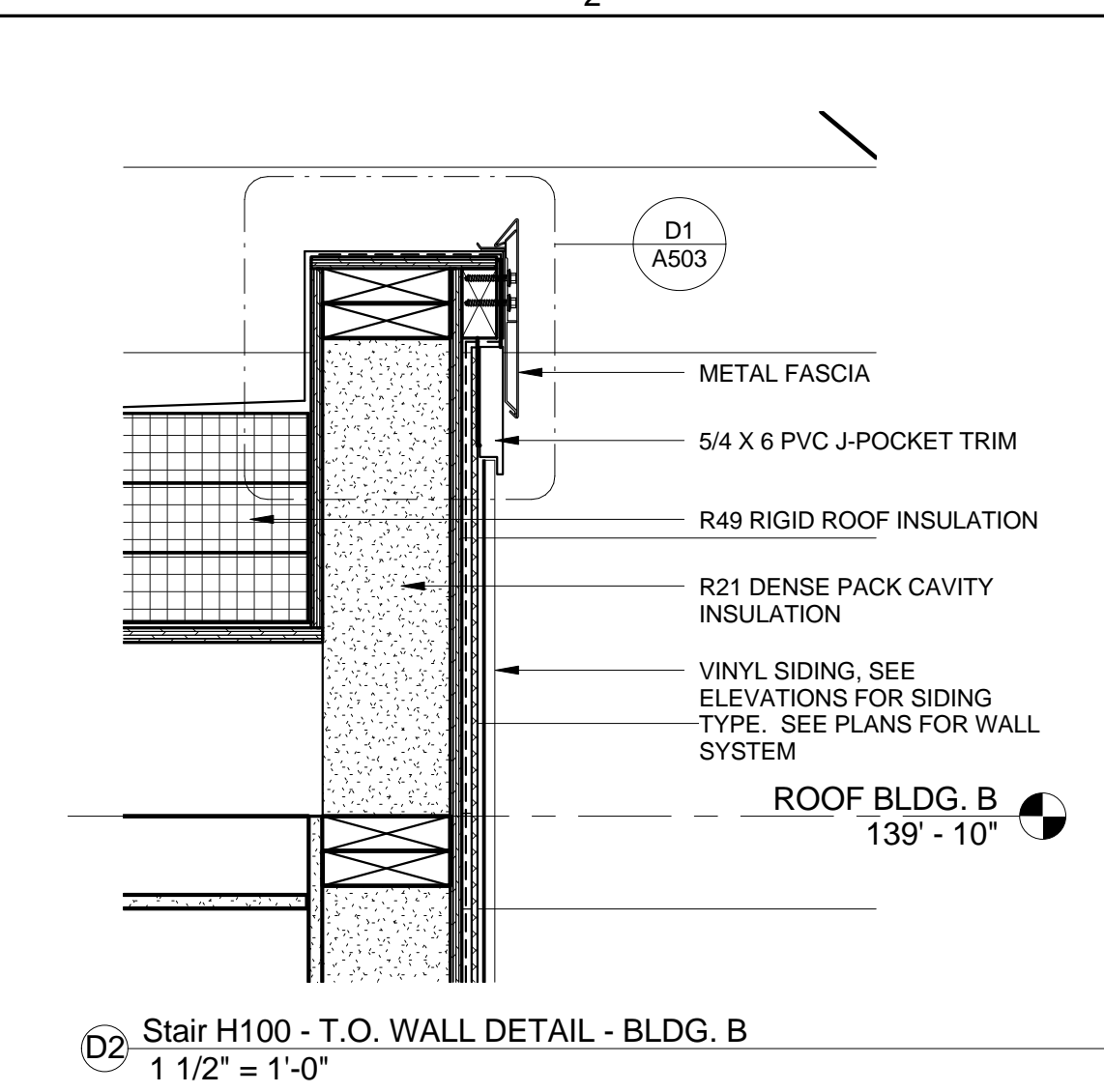
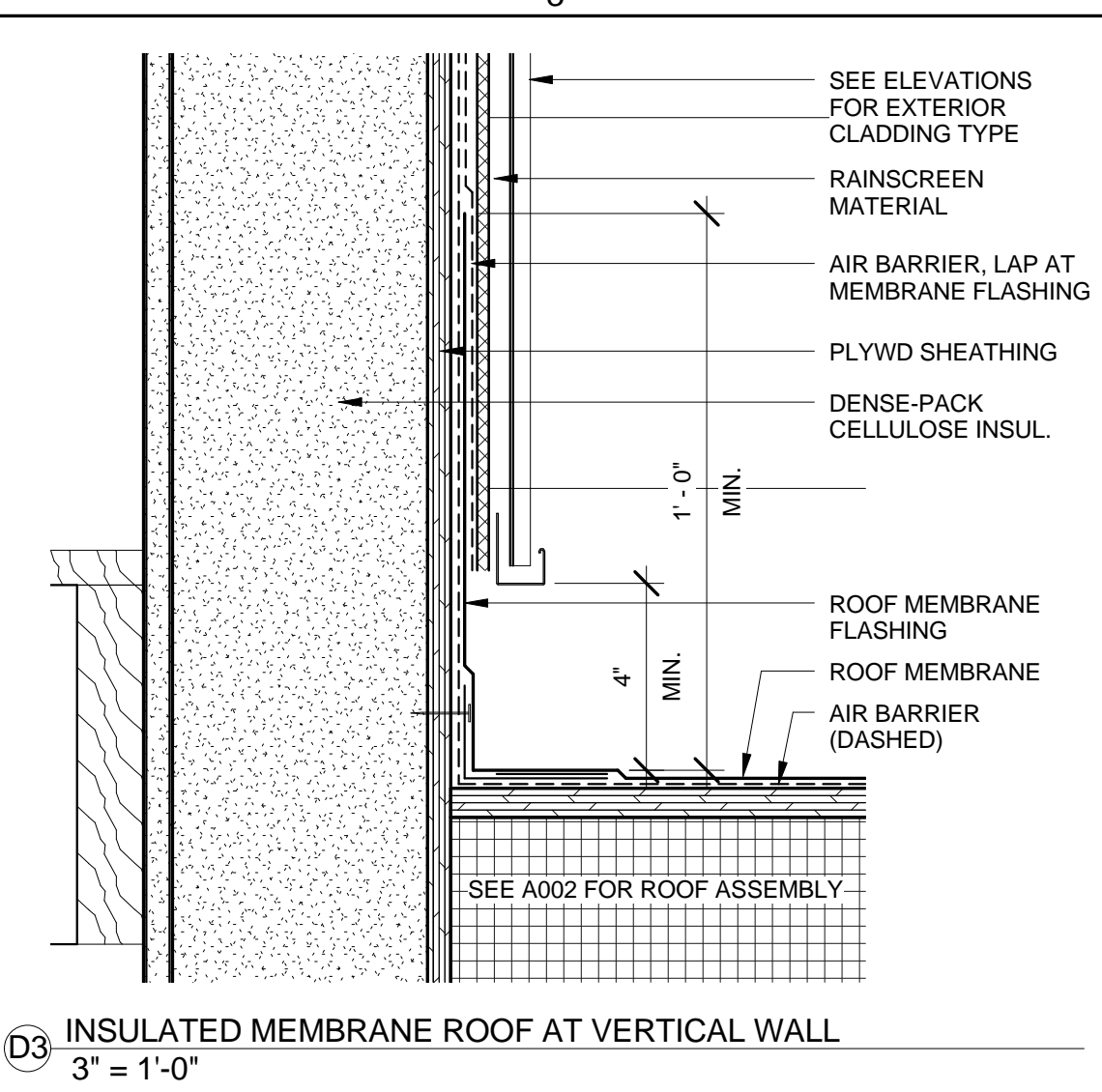


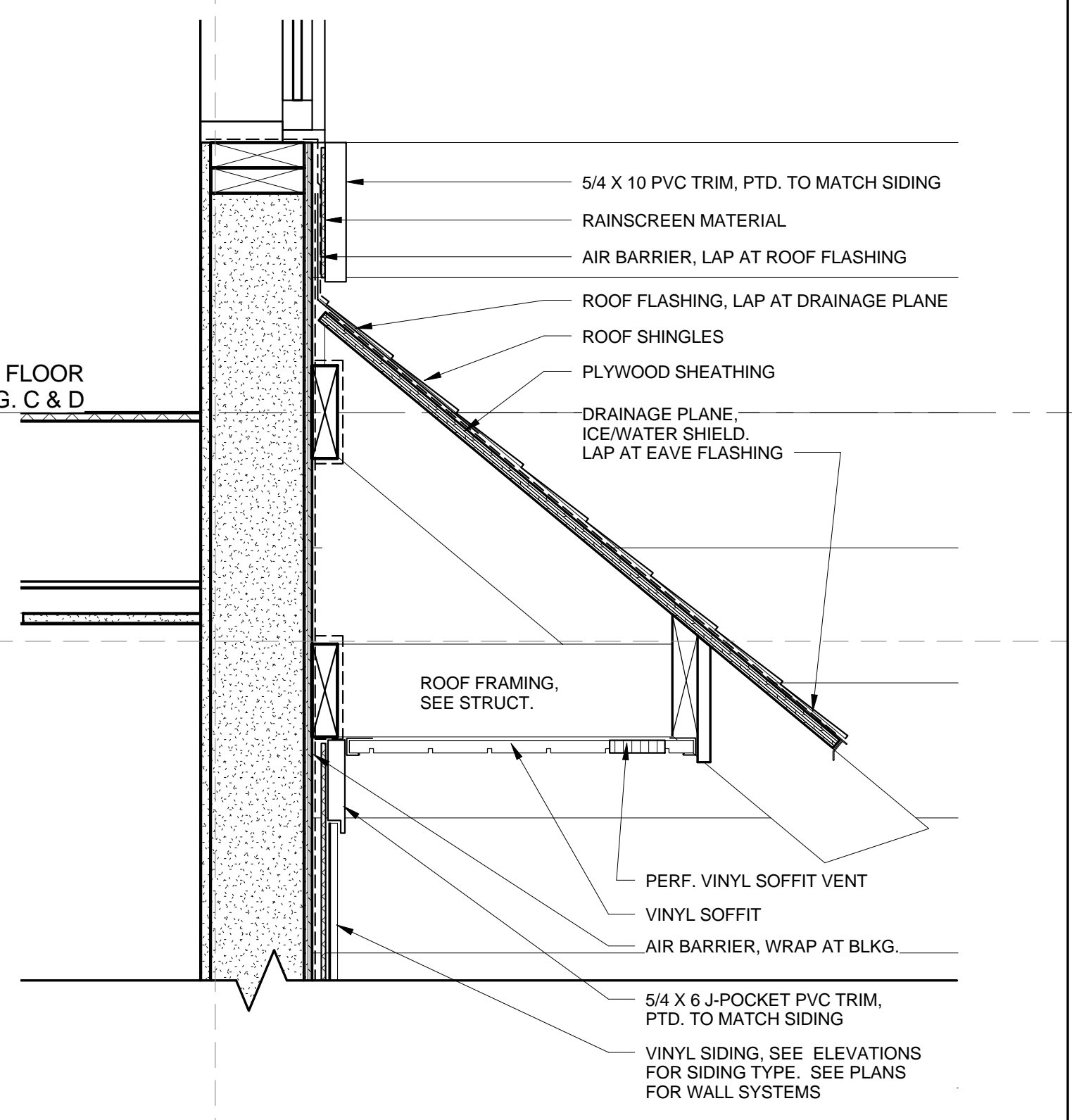
D1 Stair R100 - T.O. WALL DETAIL - BLDG. C & D
1 1/2" = 1'-0"



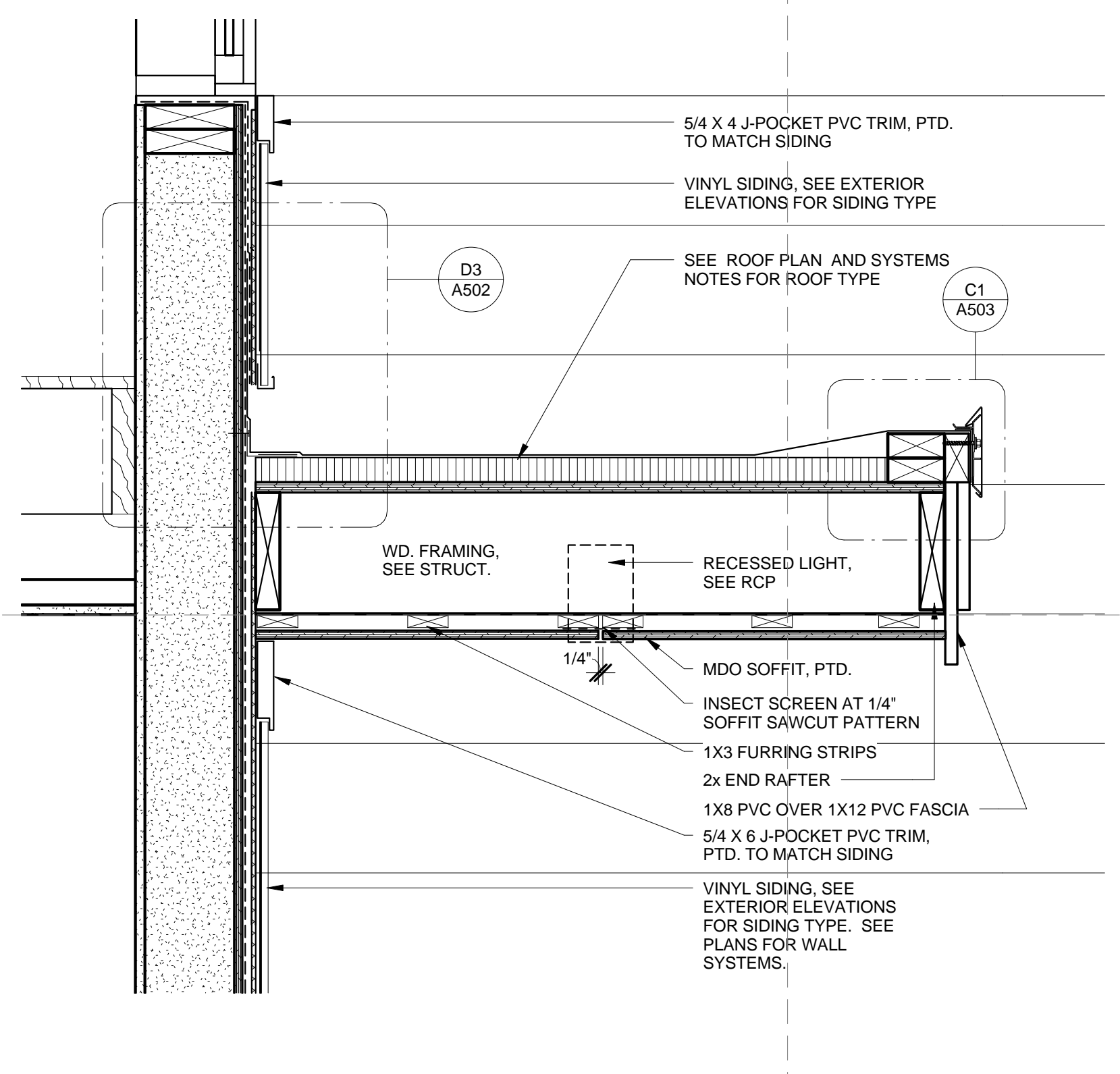
D2 Stair H100 - T.O. WALL DETAIL - BLDG. B
1 1/2" = 1'-0"



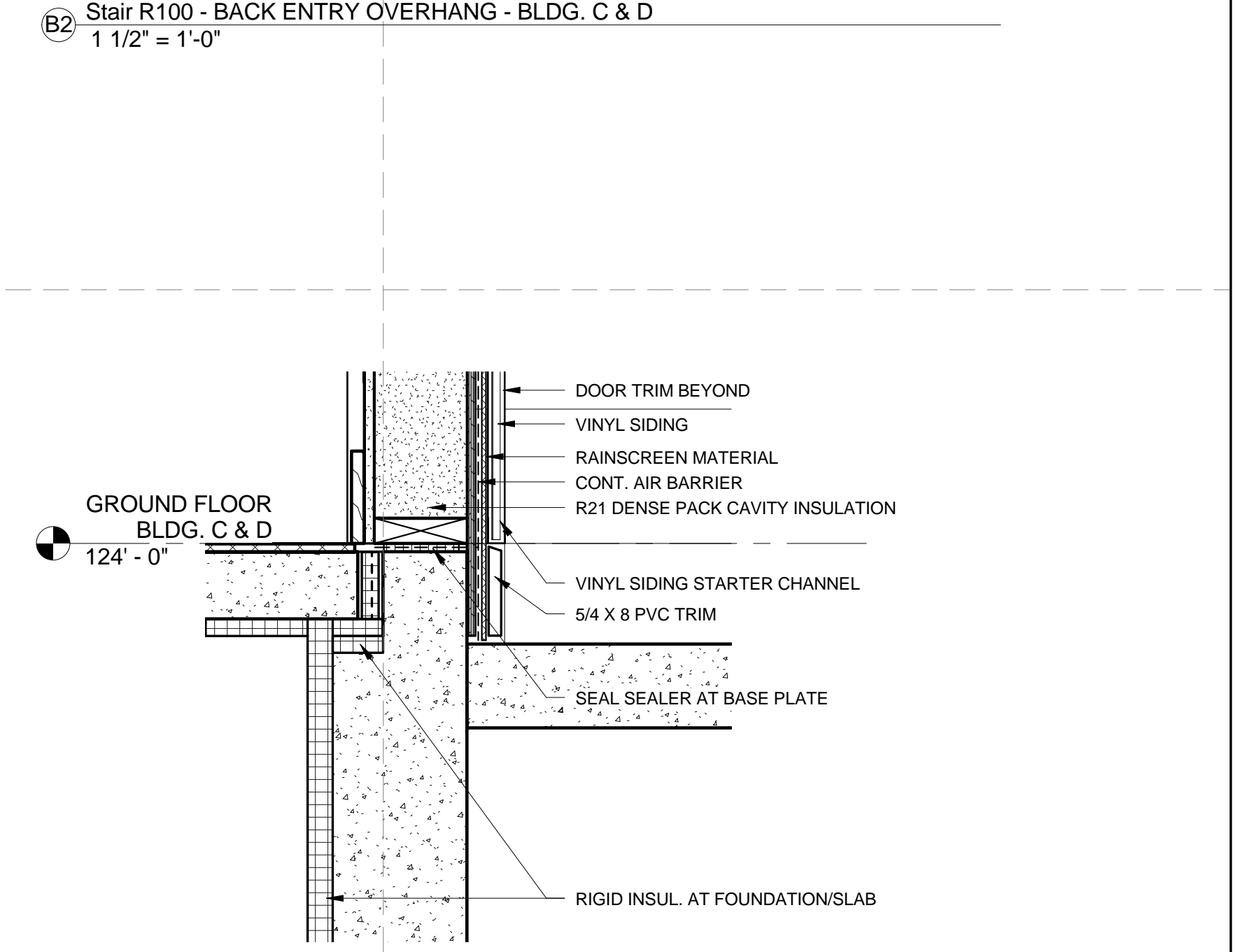
D3 INSULATED MEMBRANE ROOF AT VERTICAL WALL
3" = 1'-0"



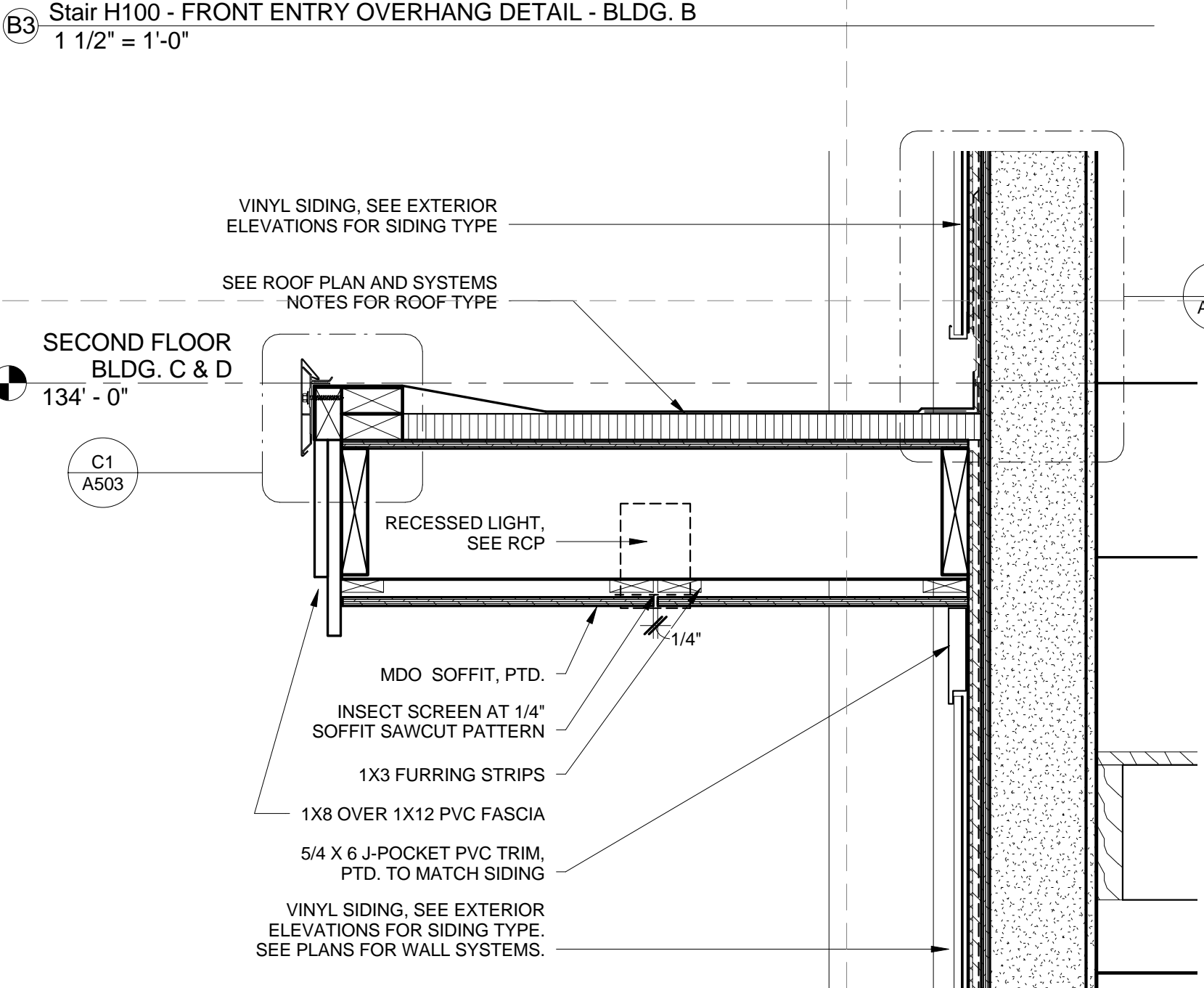
B2 Stair R100 - BACK ENTRY OVERHANG - BLDG. C & D
1 1/2" = 1'-0"



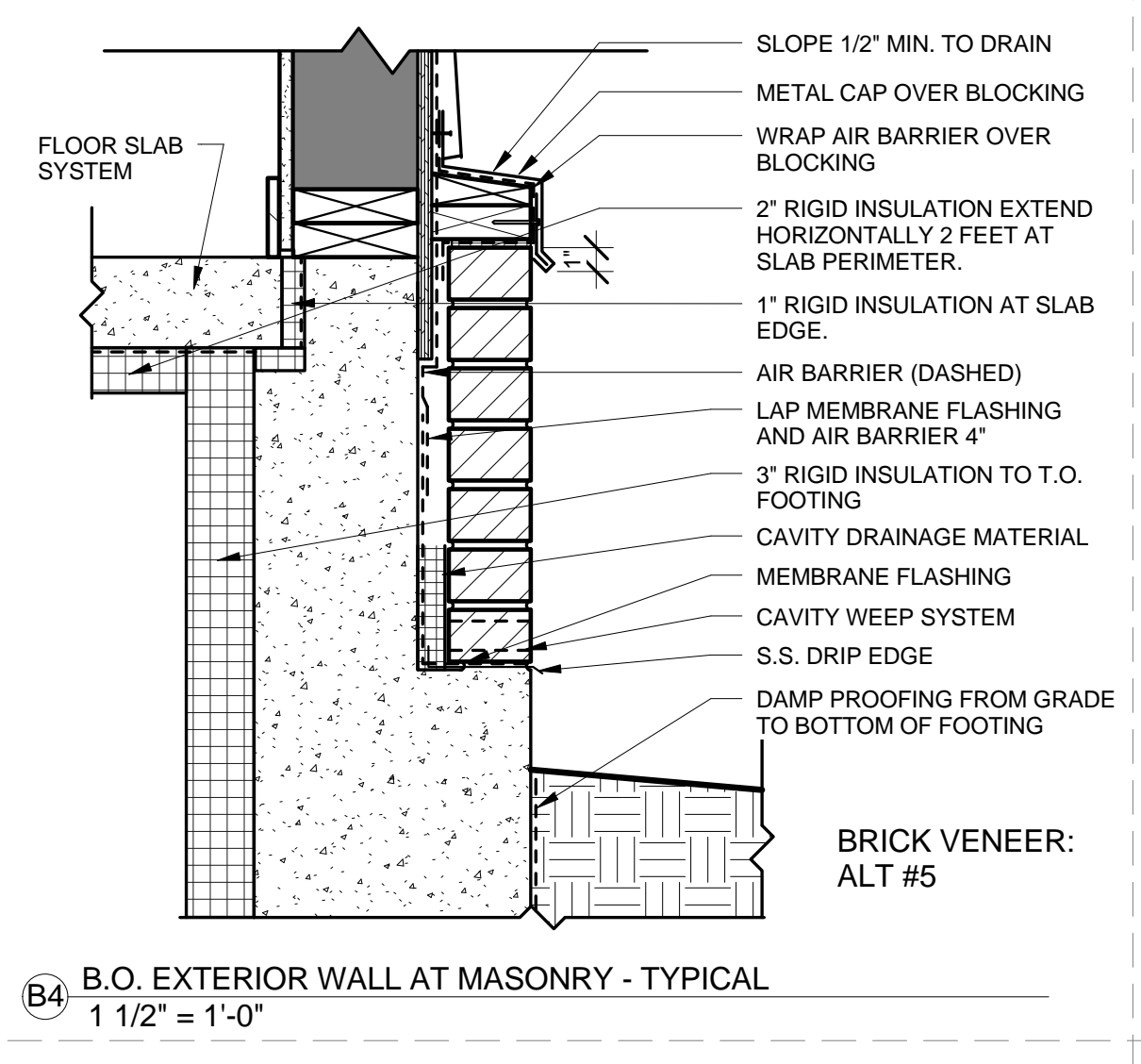
B3 Stair H100 - FRONT ENTRY OVERHANG DETAIL - BLDG. B
1 1/2" = 1'-0"



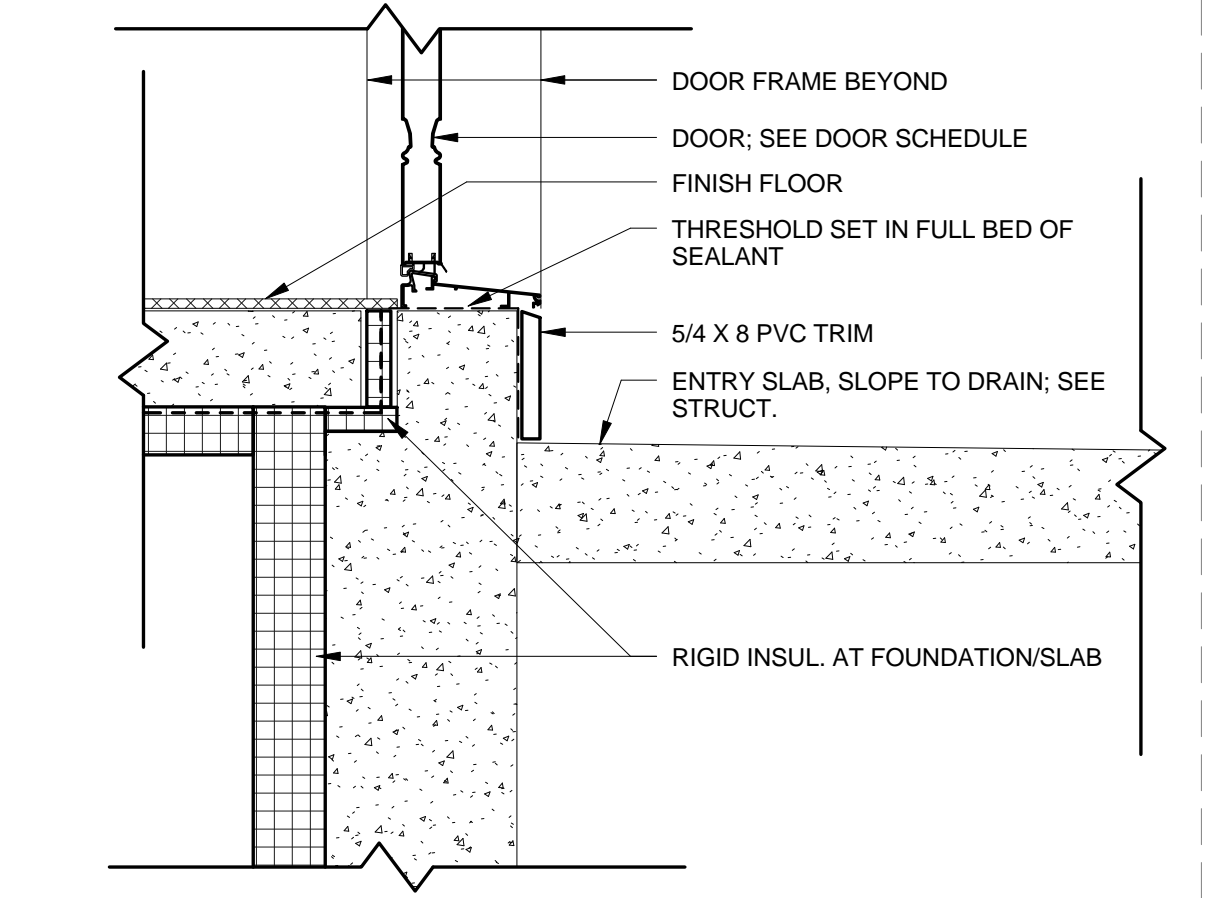
A2 Stair R100 - B.O. WALL DETAIL - BLDG. C & D
1 1/2" = 1'-0"



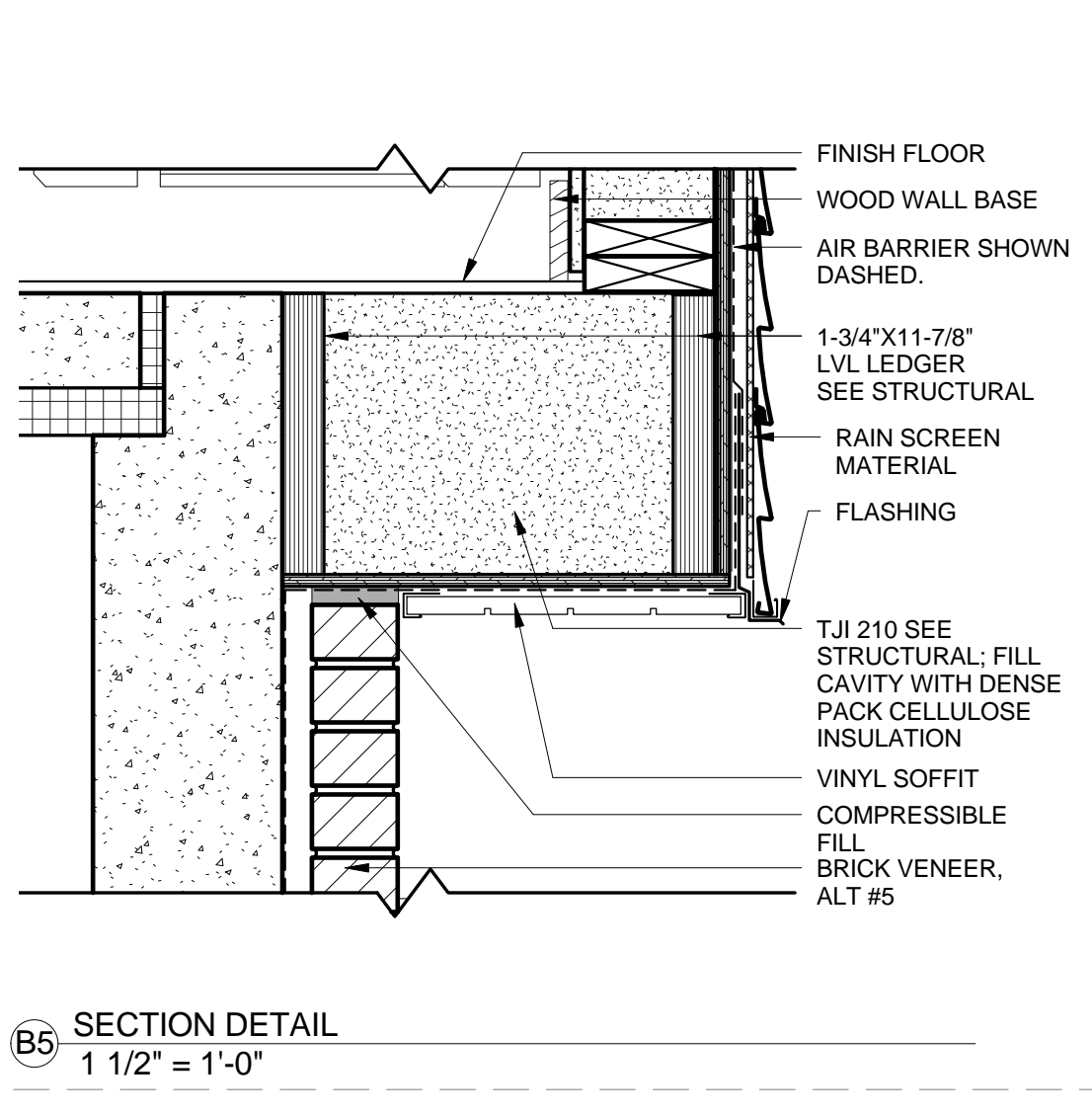
A3 Stair R100 - FRONT ENTRY OVERHANG - BLDG. C & D
1 1/2" = 1'-0"



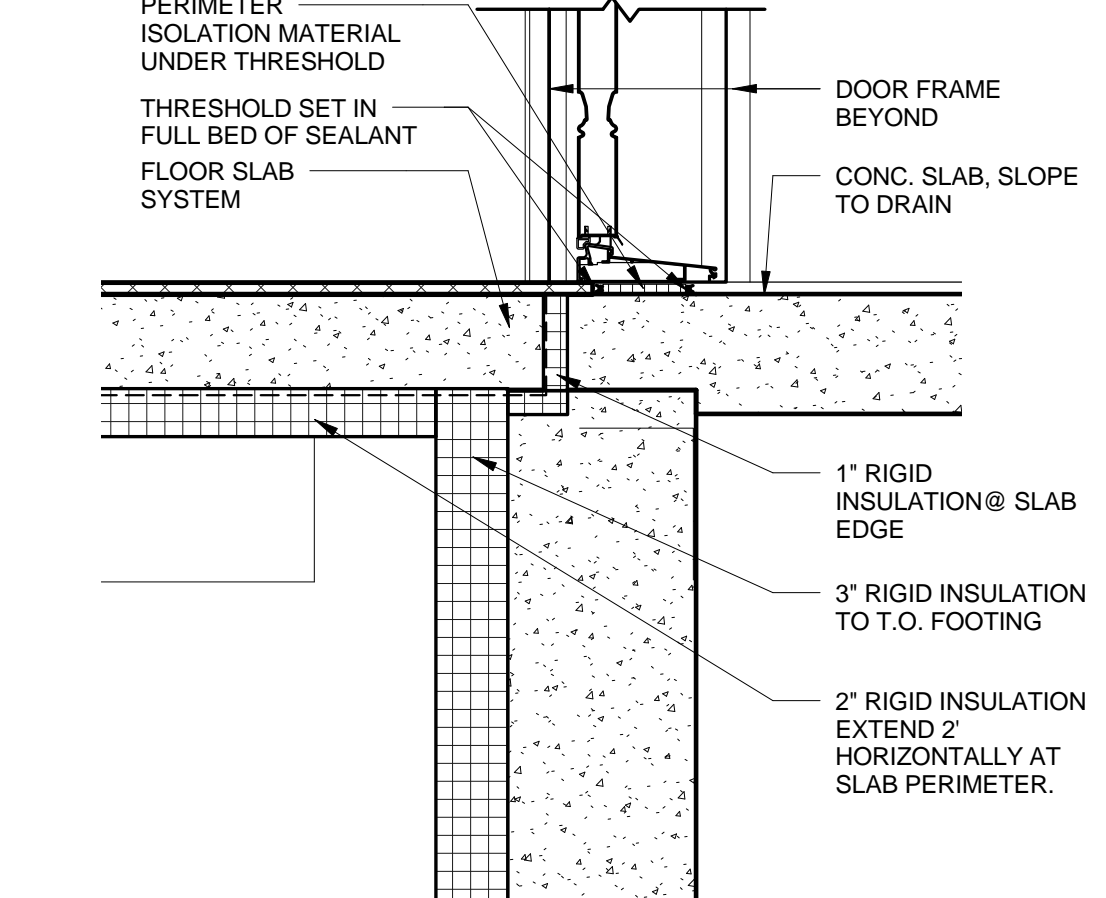
B4 B.O. EXTERIOR WALL AT MASONRY - TYPICAL
1 1/2" = 1'-0"



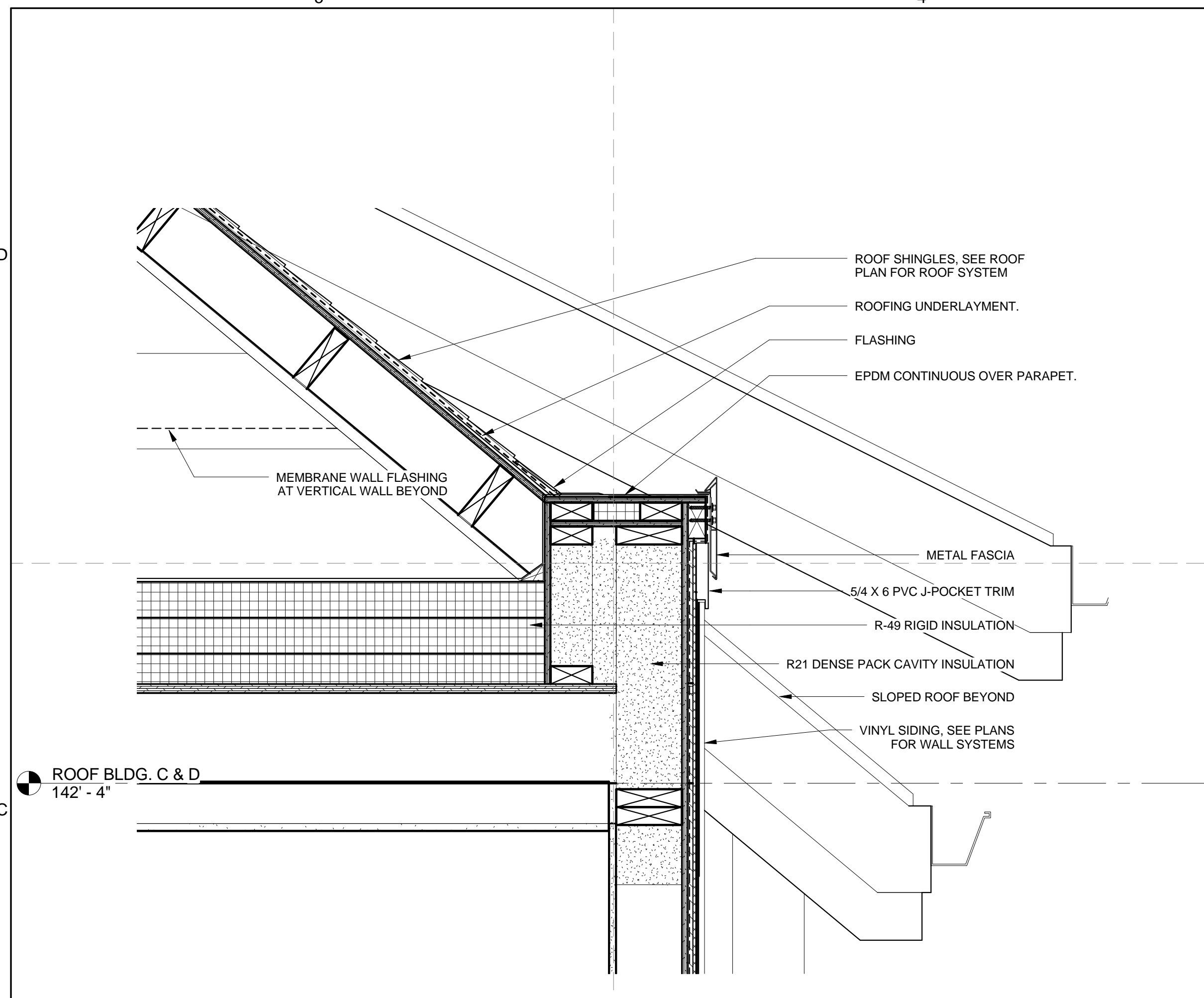
A4 TYPICAL EXTERIOR DOOR SILL DETAIL
1 1/2" = 1'-0"



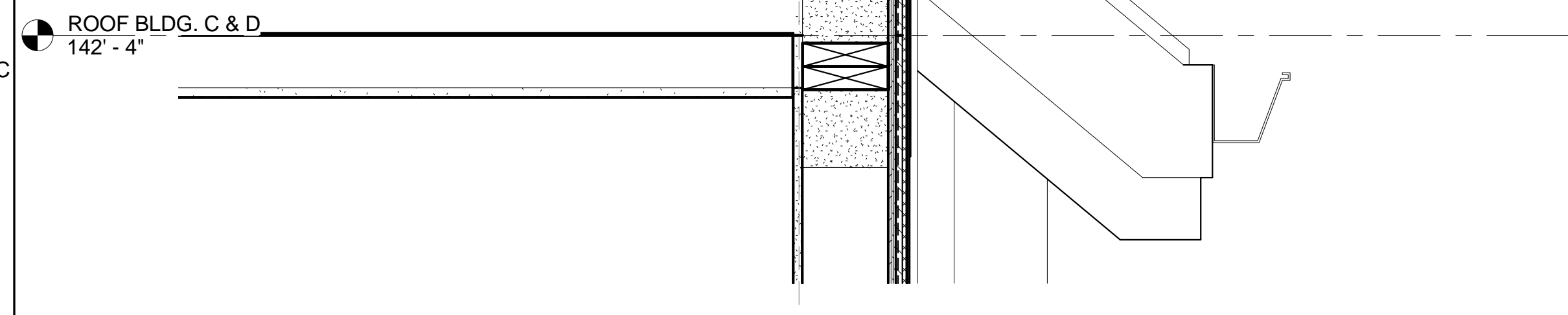
B5 SECTION DETAIL
1 1/2" = 1'-0"



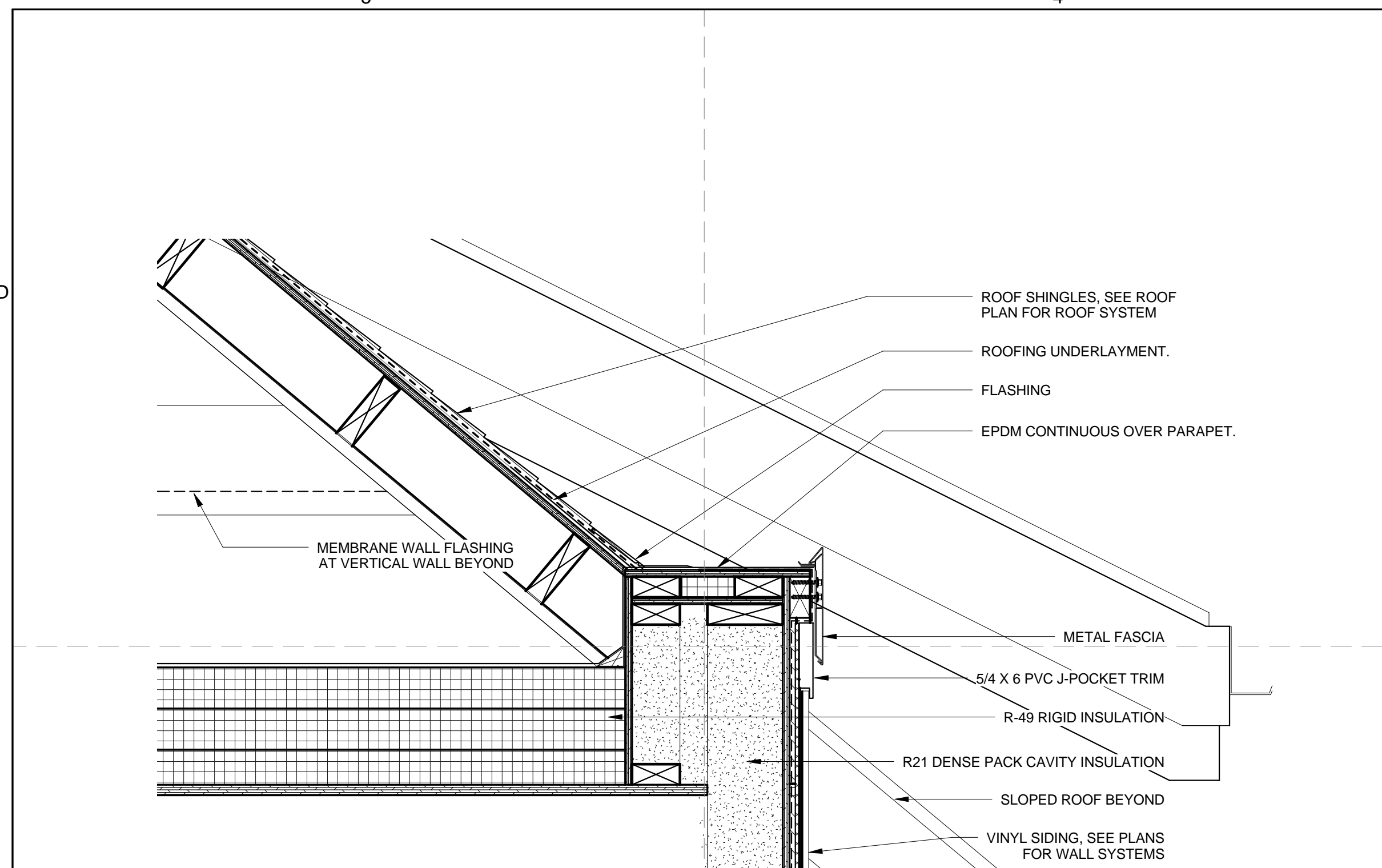
A5 EXTERIOR DOOR SILL @ UNIT A
1 1/2" = 1'-0"



C5 DETAIL @ EPDM AND SHINGLE ROOF INTERSECTION
1 1/2" = 1'-0"



C6 ROOF BLDG. C & D
142' - 4"



D4 ROOF BLDG. C & D
142' - 4"