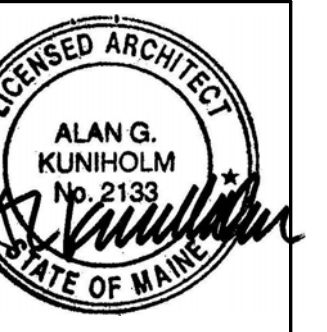




49 DARTMOUTH STREET
PORTLAND, MAINE 04101
207-775-1059
www.pdtarchts.com

COPYRIGHT 2012
PDT Architects
Reuse or reproduction of the
contents of this document is not
permitted without written
permission of PDT Architects.

ADAMS SCHOOL REDEVELOPMENT
Portland, Maine



JOB NO.
08-056

DRWN. CHK
Checker

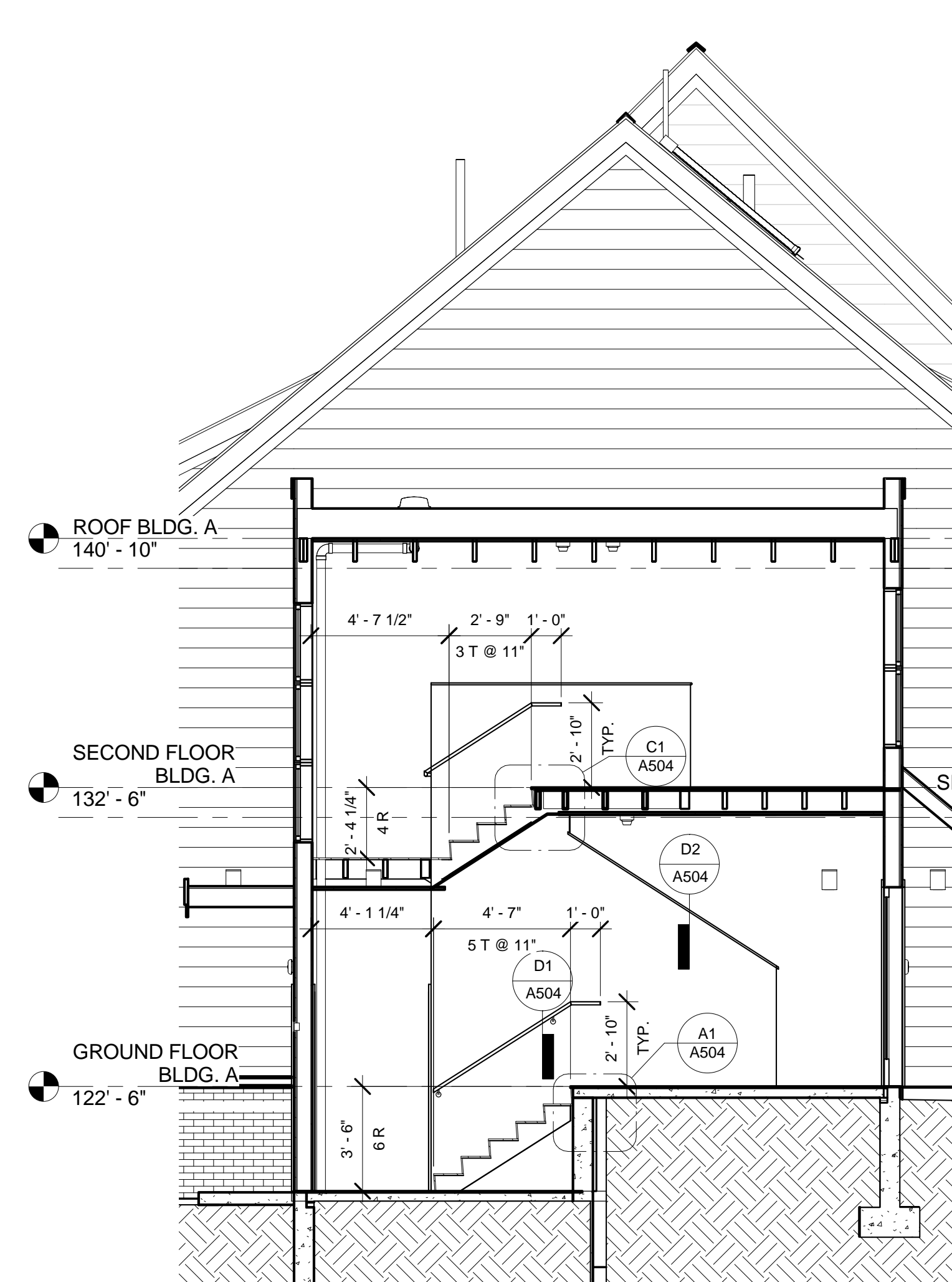
SCALE:
As indicated

ISSUE
5 MARCH 2012

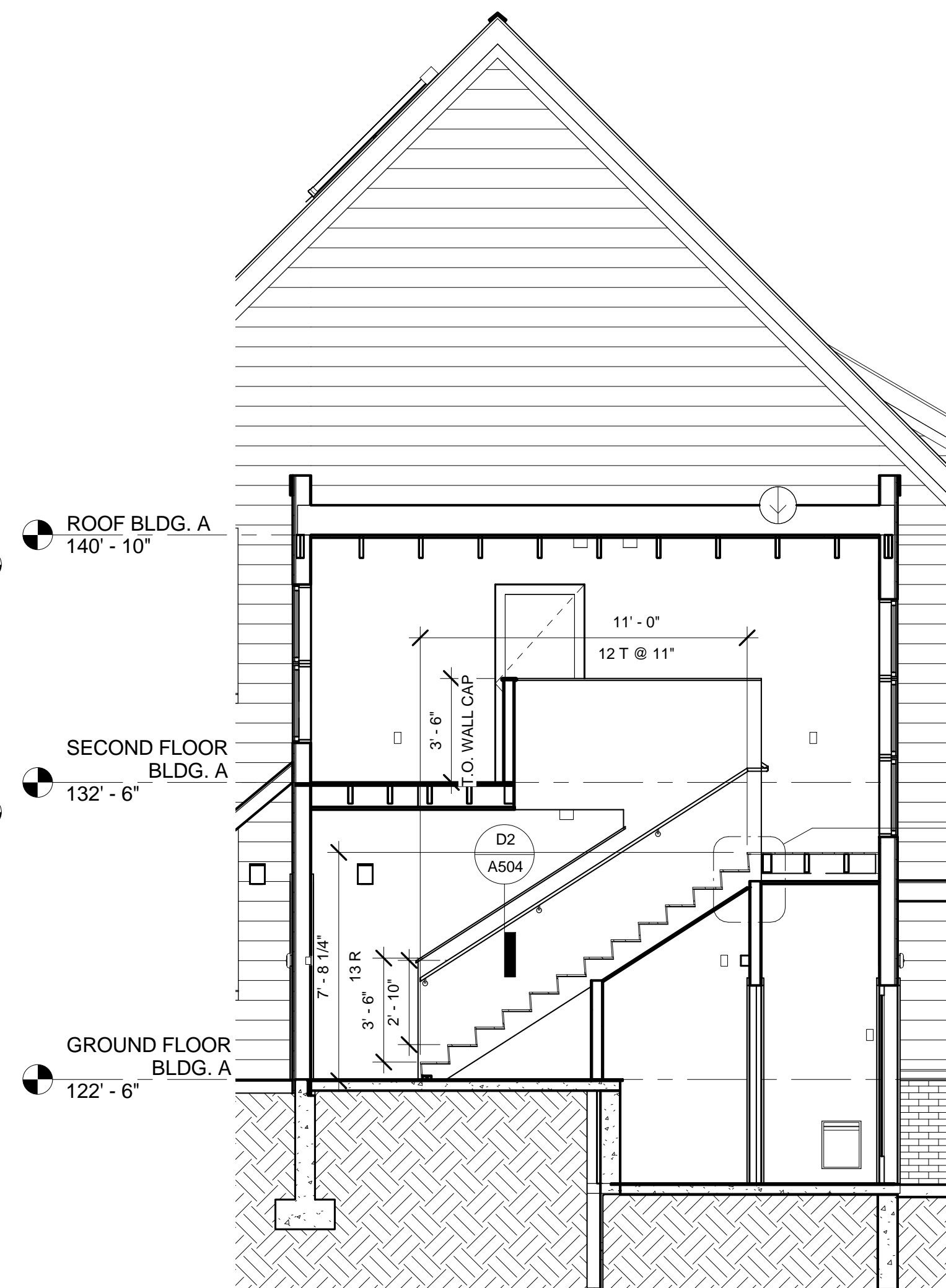
TITLE
STAIR PLANS &
SECTIONS

SHEET

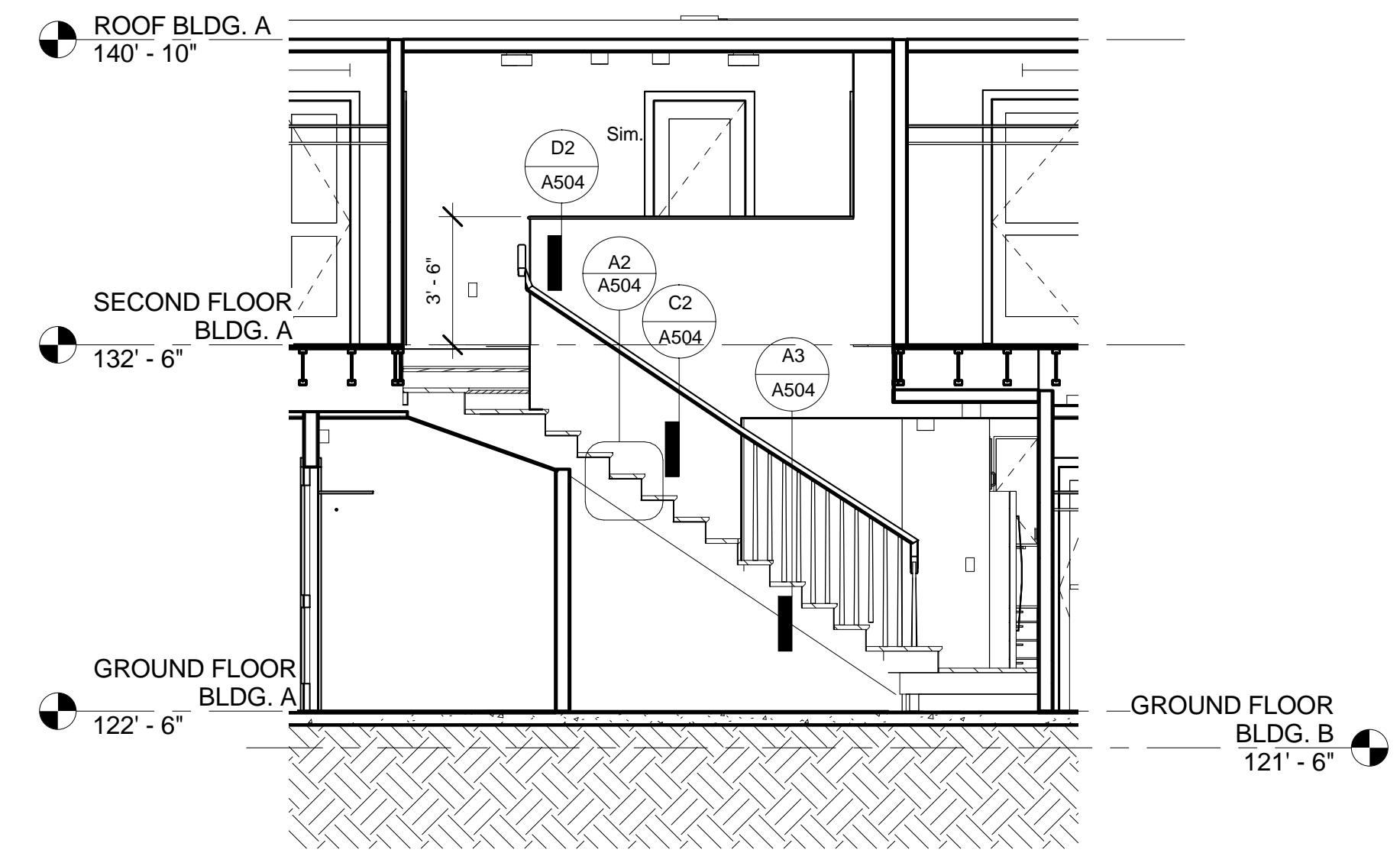
A400



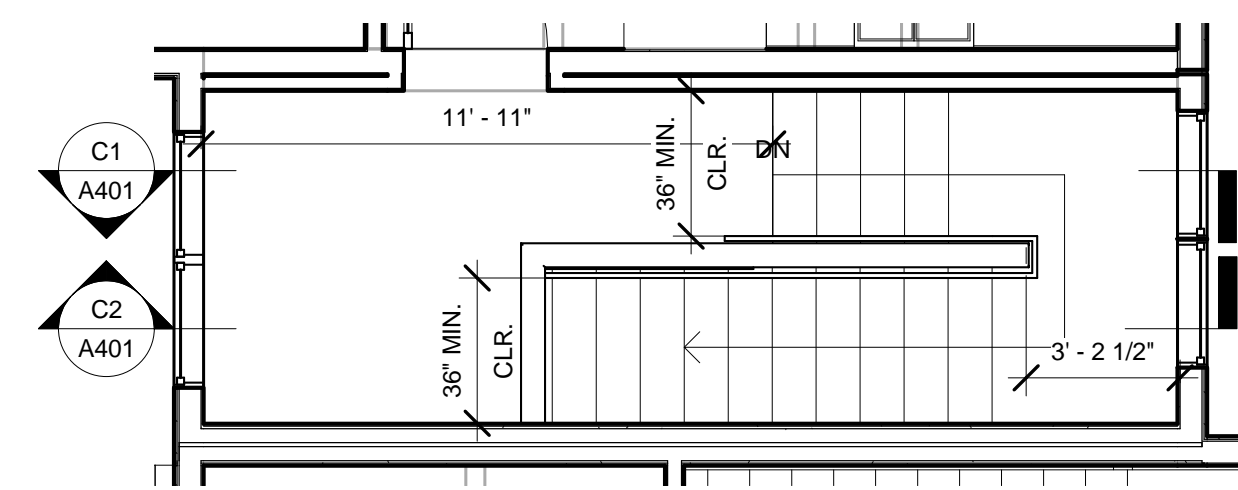
C2 STAIR D100 SECTION 1 - BUILDING A
1/4" = 1'-0"



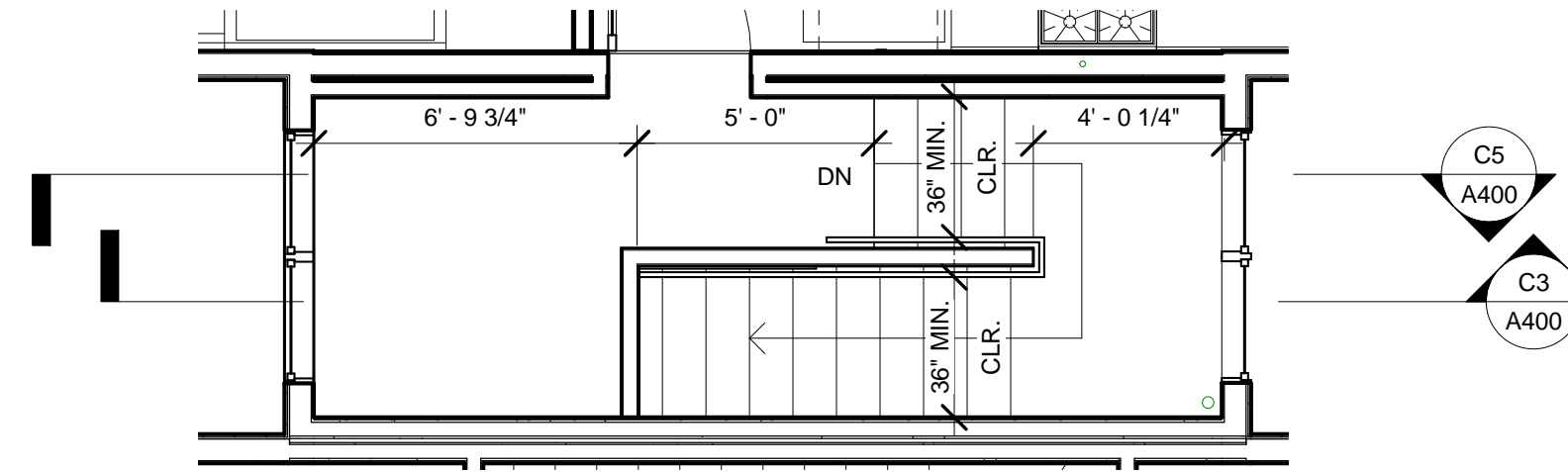
C3 STAIR D100 SECTION 2 - BUILDING A
1/4" = 1'-0"



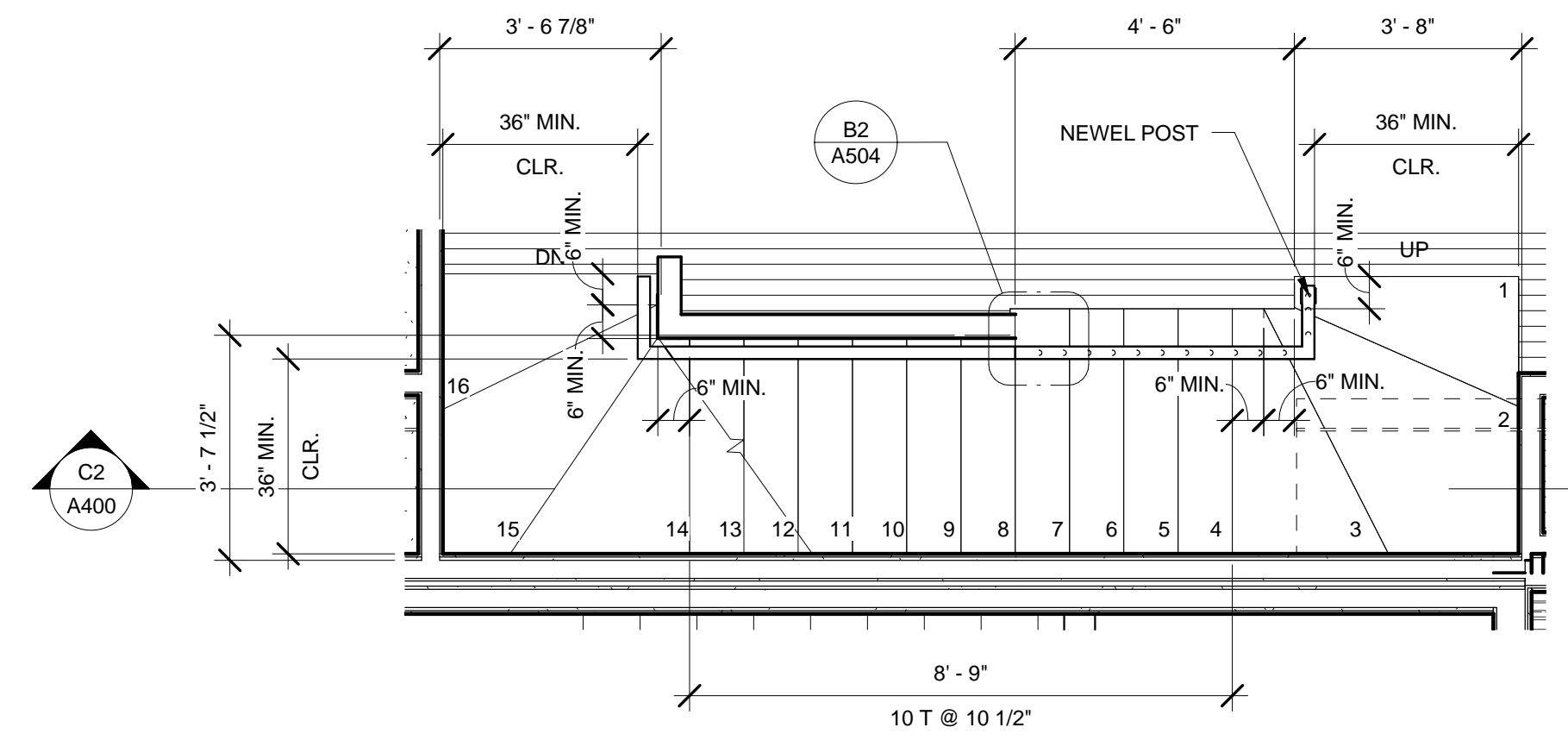
C2 STAIR B100 SECTION 1 - BUILDING A - UNIT B
1/4" = 1'-0"



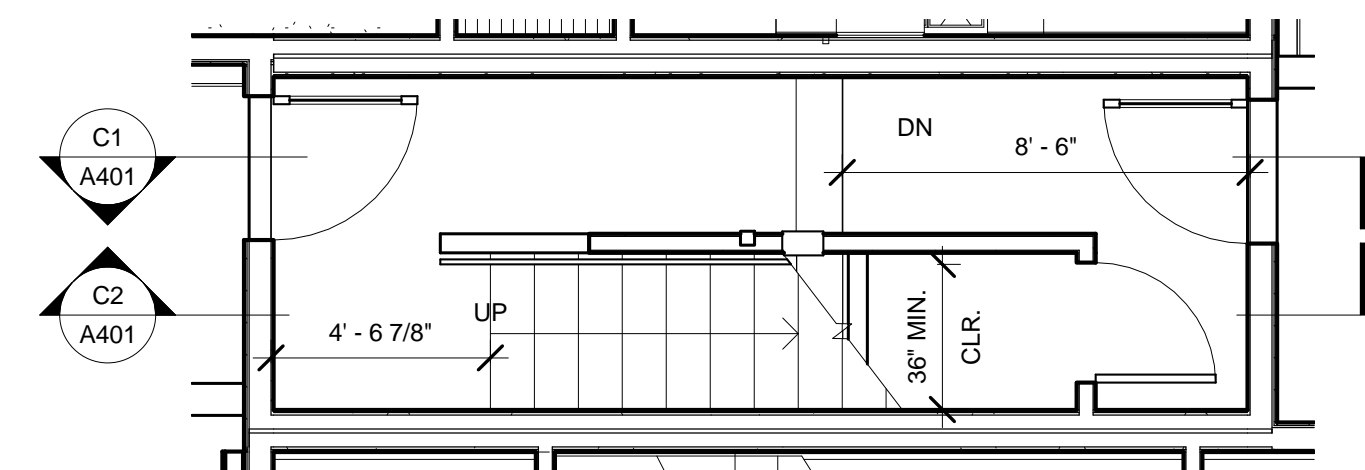
B2 STAIR M200 PLAN - BUILDING C
1/4" = 1'-0"



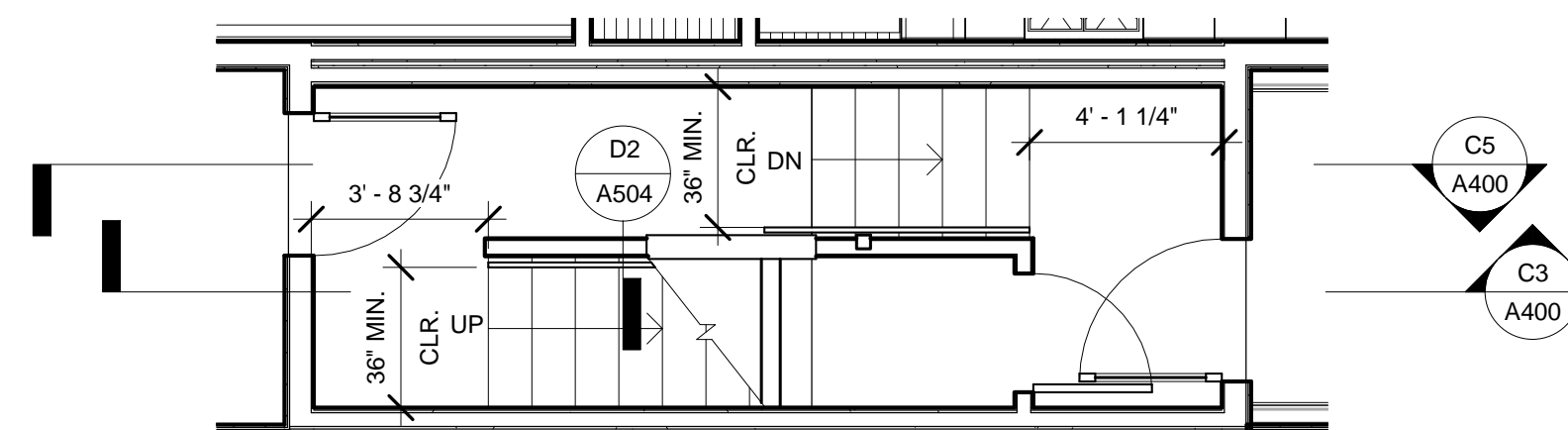
B3 STAIR D100 2nd FLOOR PLAN - BUILDING A
1/4" = 1'-0"



B2 STAIR B100 PLAN - BUILDING A - UNIT B
3/8" = 1'-0"



B1 STAIR M100 Plan
1/4" = 1'-0"



B3 STAIR D100 1st FLOOR PLAN - BUILDING A
1/4" = 1'-0"