



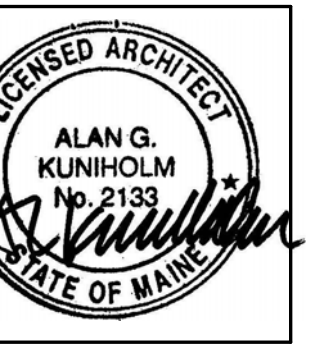
ARCHITECTS

49 DARTMOUTH STREET
PORTLAND, MAINE 04101
207-775-1059
www.pdtarchs.com

COPYRIGHT 2012
PDT Architects

Reuse or reproduction of
the contents of this document is not
permitted without written
permission of PDT Architects.

ADAMS SCHOOL REDEVELOPMENT
Portland, Maine



JOB NO.
08-056

DRWN. CHK
Checker

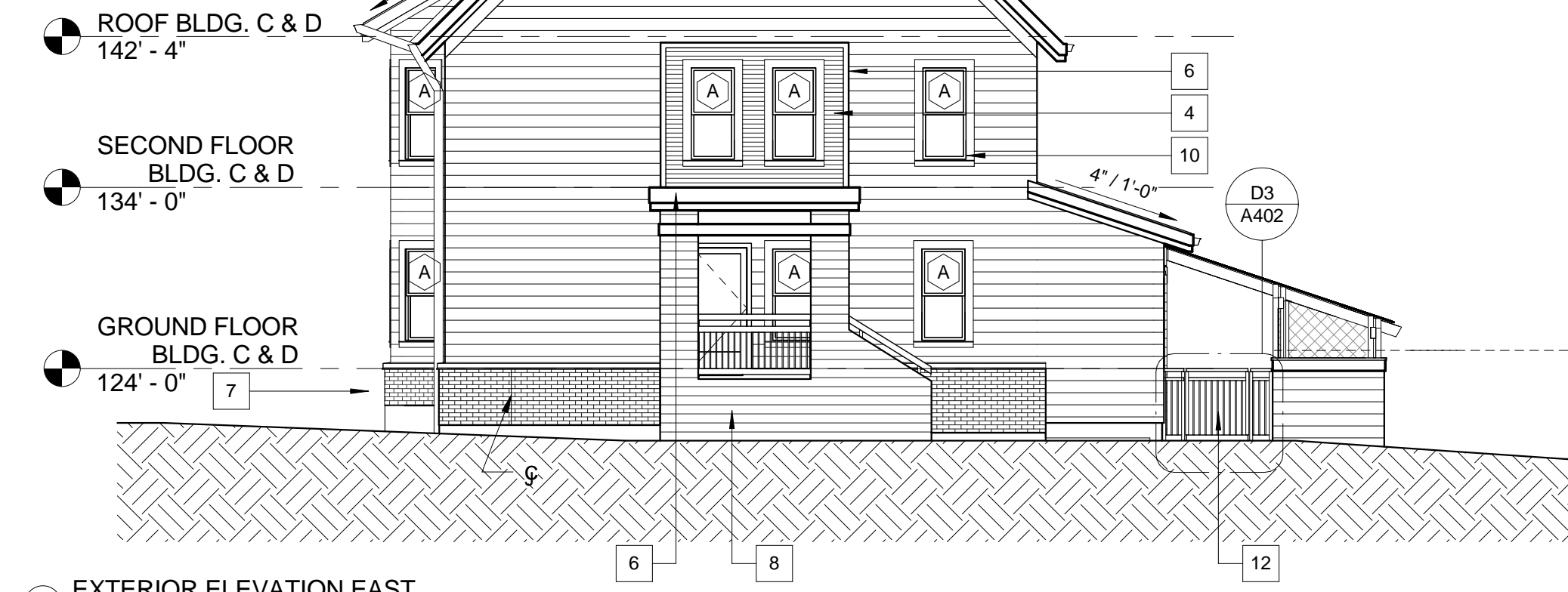
SCALE:
1/8" = 1'-0"

ISSUE
5 MARCH 2012

TITLE
EXTERIOR ELEVATIONS

SHEET

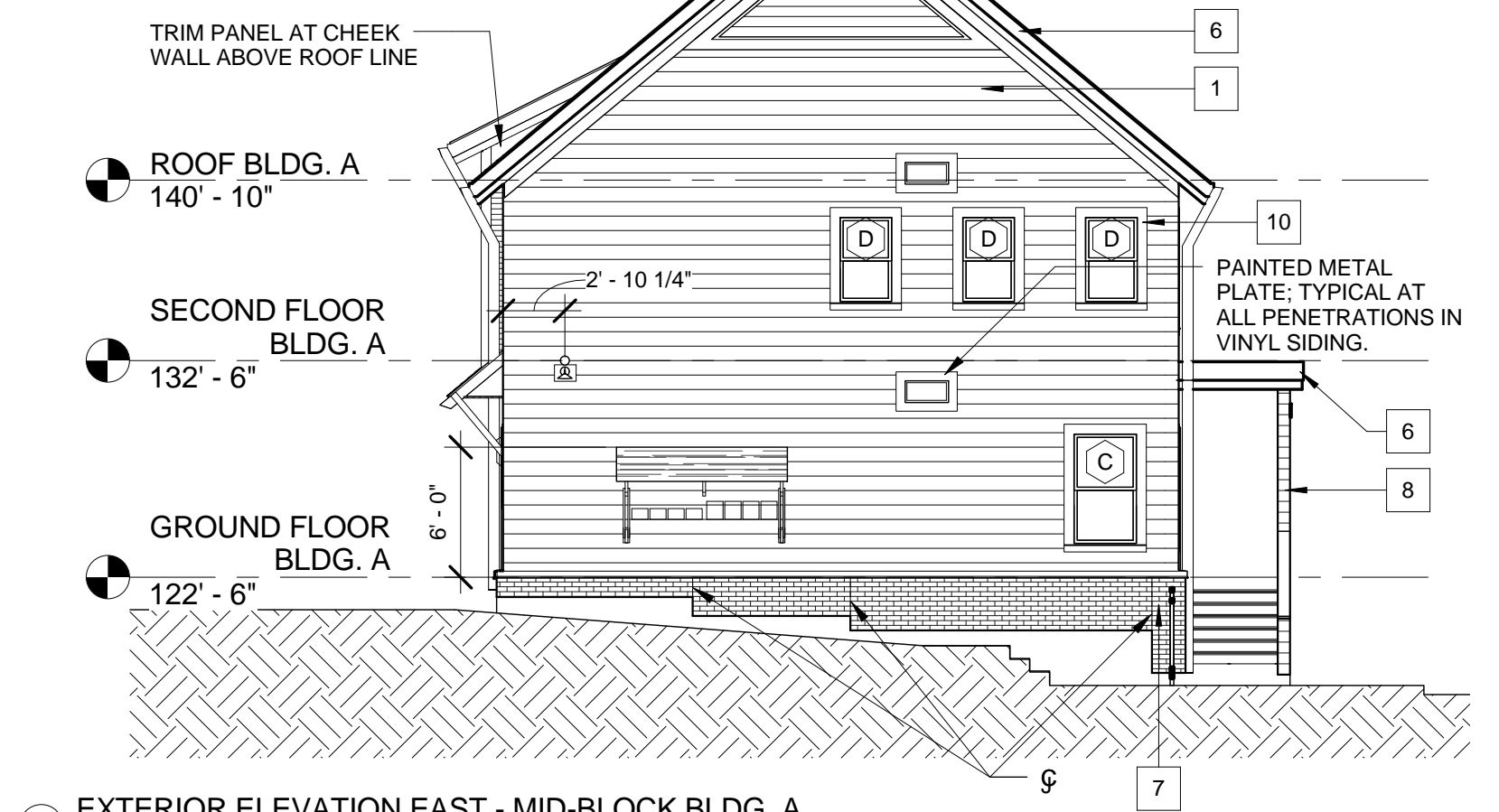
A200



D5 EXTERIOR ELEVATION EAST
1/8" = 1'-0"



D2 EXTERIOR ELEVATION EAST - MID-BLOCK BLDG. A
1/8" = 1'-0"



D2 EXTERIOR ELEVATION EAST - MID-BLOCK BLDG. A
1/8" = 1'-0"



B5 EXTERIOR ELEVATION NORTH - STREET
1/8" = 1'-0"



A5 EXTERIOR ELEVATION SOUTH - PARKING
1/8" = 1'-0"

KEYNOTE LEGEND	
KEY VALUE	KEYNOTE TEXT
1	VINYL SIDING TYPE 1, COLOR A
2	VINYL SIDING TYPE 1, COLOR B
3	VINYL SIDING TYPE 2, COLOR A
4	VINYL SIDING TYPE 2, COLOR B
5	VINYL SIDING TYPE 3, COLOR C
6	PVC TRIM
7	BRICK VENEER; ALT. #5
8	WOOD SIDING
9	METAL LOUVER VENT
10	VINYL WINDOWS
11	FIBERGLASS DOOR/FRAME
12	METAL GATE
13	ASPHALT SHINGLE ROOF
14	METAL FASCIA

