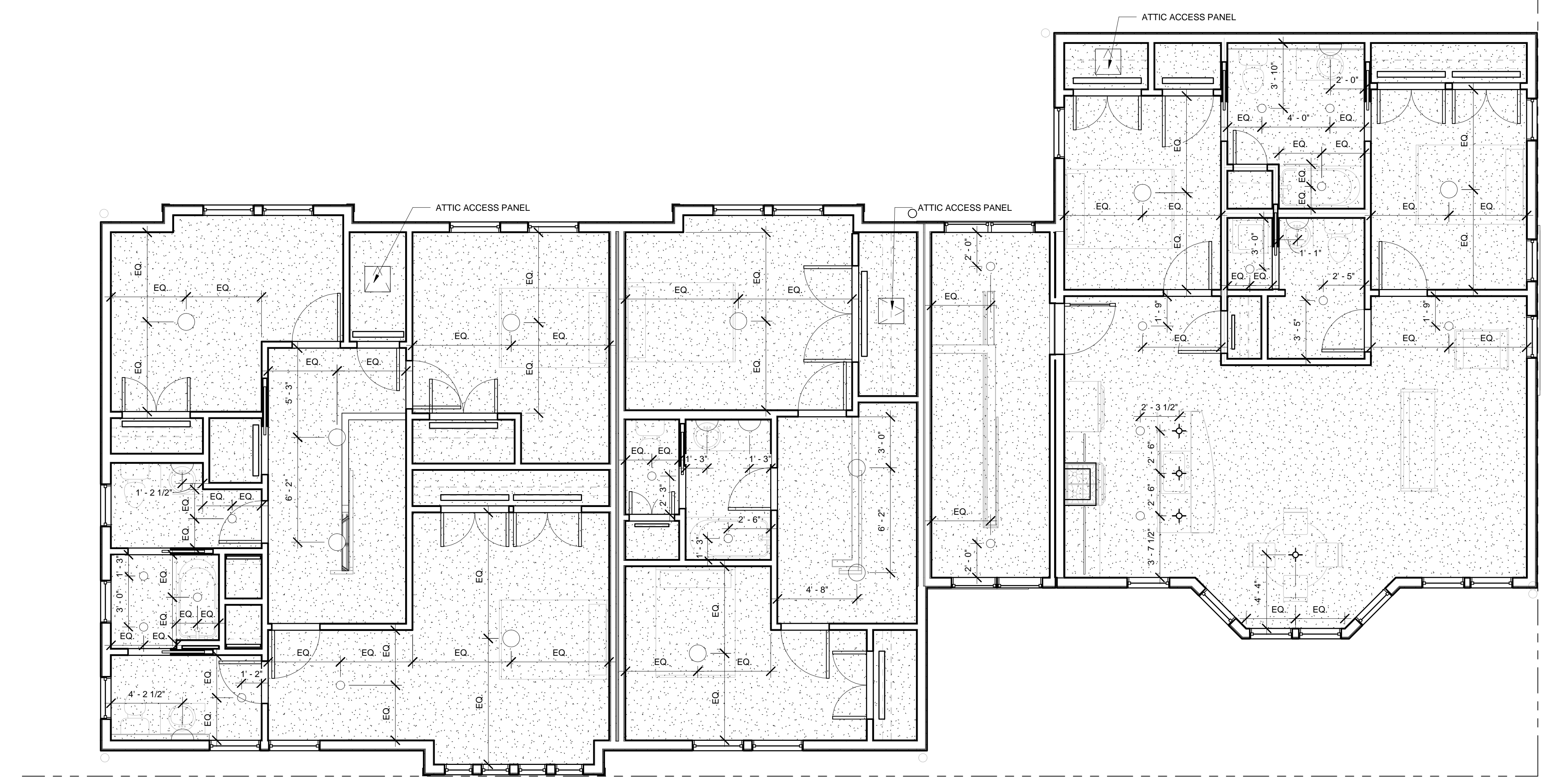


5 4 3 2 1

D  
C  
B  
A



**GRAPHIC LEGEND**

- RECESSED DOWNLIGHT
- WALL MOUNTED FIXTURE
- PENDANT FIXTURE
- 12" DIA. SURFACE MOUNTED FIXTURE
- 24" FLUORESCENT LIGHT
- 36" FLUORESCENT LIGHT
- 48" FLUORESCENT LIGHT
- 60" FLUORESCENT LIGHT
- MECHANICAL SUPPLY OR RETURN
- GWB CEILING
- CEILING TYPE  
CEILING HEIGHT
- WALL TAG IDENTIFICATION

**NOTE:**  
ALL CEILING HEIGHTS ARE +8'-0" A.F.F. UNLESS NOTED OTHERWISE.

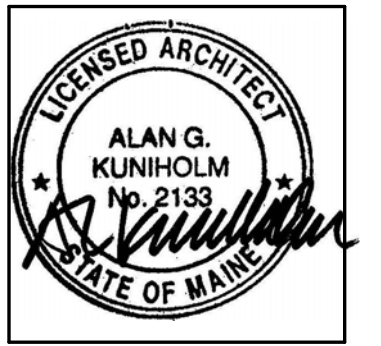
**LEGEND**  
1/4" = 1'-0"



49 DARTMOUTH STREET  
PORTLAND, MAINE 04101  
207-775-1059  
www.pdtarchs.com

**COPYRIGHT 2012**  
PDT Architects  
Reuse or reproduction of the contents of this document is not permitted without written permission of PDT Architects.

**ADAMS SCHOOL REDEVELOPMENT**  
Portland, Maine



JOB NO.  
08-056

DRWN. CHK  
Checker

SCALE:  
1/4" = 1'-0"

ISSUE  
5 MARCH 2012

TITLE  
BUILDING C 2nd  
FLOOR CEILING  
PLAN

SHEET  
**A110**

**A5** 2ND FLOOR CEILING PLAN BLDG. C  
1/4" = 1'-0"

5 4 3 2 1

