

5

4

3

2

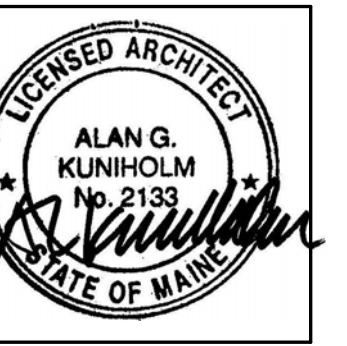
1



49 DARTMOUTH STREET  
PORTLAND, MAINE 04101  
207-775-1059  
www.pdtarch.com

**COPYRIGHT 2012  
PDT Architects**  
Reuse or reproduction of the  
contents of this document is not  
permitted without written  
permission of PDT Architects.

**ADAMS SCHOOL REDEVELOPMENT**  
Portland, Maine



JOB NO.  
08-056

DRWN. CHK  
Checker

SCALE:  
1/4" = 1'-0"

ISSUE  
5 MARCH 2012

TITLE  
BUILDING A 2nd  
FLOOR CEILING  
PLAN

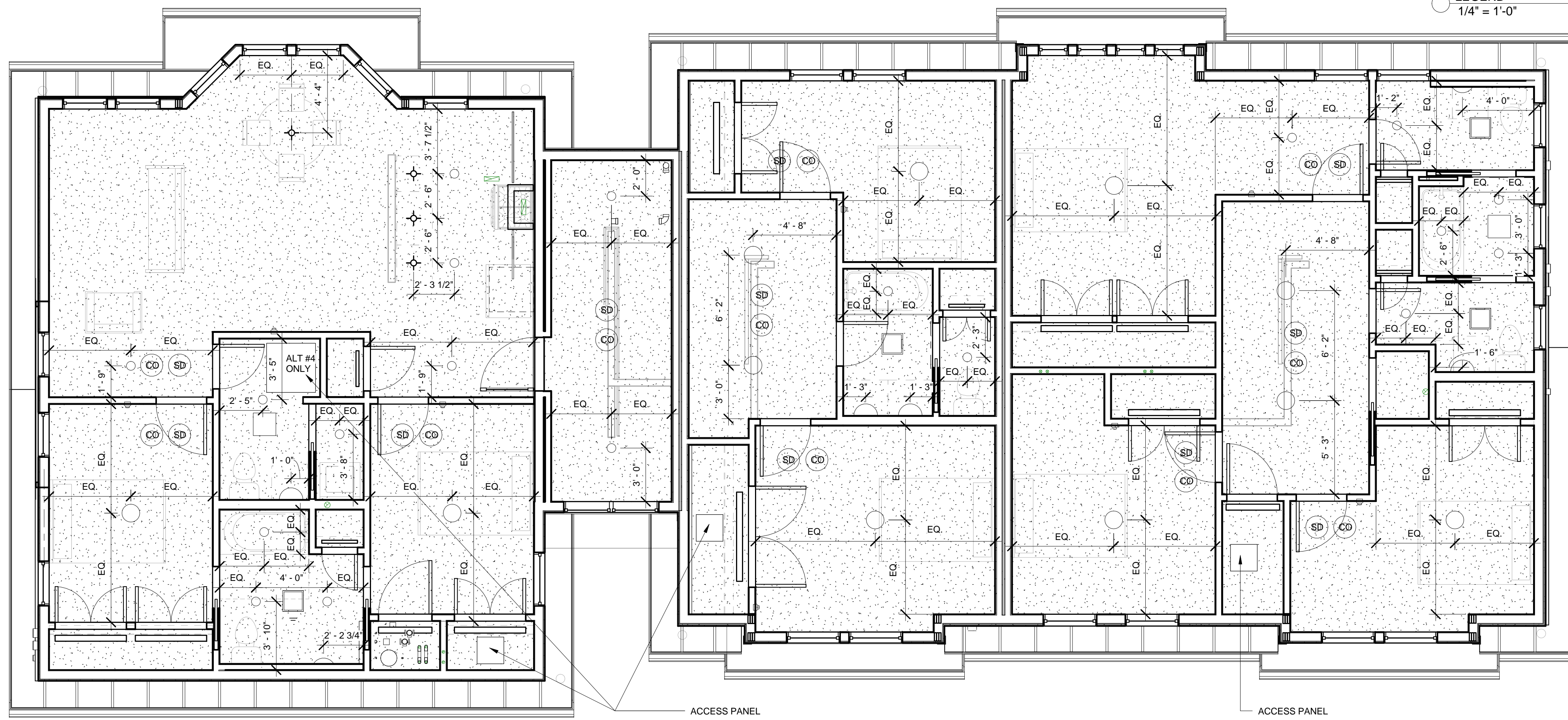
SHEET  
**A108**

**GRAPHIC LEGEND**

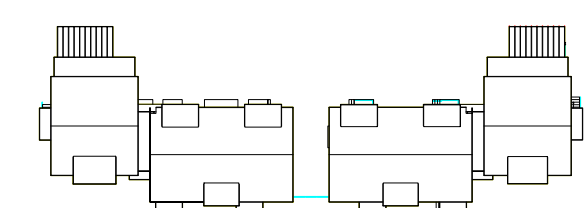
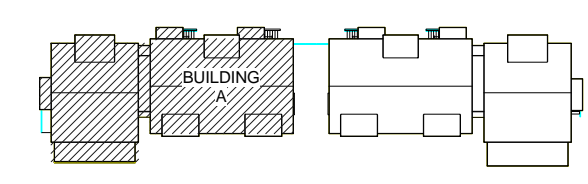
- RECESSED DOWNLIGHT
- WALL MOUNTED FIXTURE
- PENDANT FIXTURE
- 12" DIA. SURFACE MOUNTED FIXTURE
- 24" FLUORESCENT LIGHT
- 36" FLUORESCENT LIGHT
- 48" FLUORESCENT LIGHT
- 60" FLUORESCENT LIGHT
- MECHANICAL SUPPLY OR RETURN
- GWB CEILING
- CEILING TYPE  
CEILING HEIGHT
- WALL TAG IDENTIFICATION

**NOTE:**  
ALL CEILING HEIGHTS ARE +8'-0" A.F.F. UNLESS NOTED OTHERWISE.

**LEGEND**  
1/4" = 1'-0"



**A5 2ND FLOOR CEILING PLAN BLDG. A**  
1/4" = 1'-0"



5

4

3

2

1