

5

4

3

2

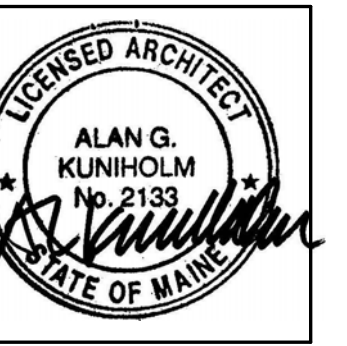
1



49 DARTMOUTH STREET
PORTLAND, MAINE 04101
207-775-1059
www.pdtarchs.com

**COPYRIGHT 2012
PDT Architects**
Reuse or reproduction of the
contents of this document is not
permitted without written
permission of PDT Architects.

ADAMS SCHOOL REDEVELOPMENT
Portland, Maine



JOB NO.
08-056

DRWN. CHK
Checker

SCALE:
1/4" = 1'-0"

ISSUE
5 MARCH 2012

TITLE
BUILDING A
GROUND FLOOR
CEILING PLAN

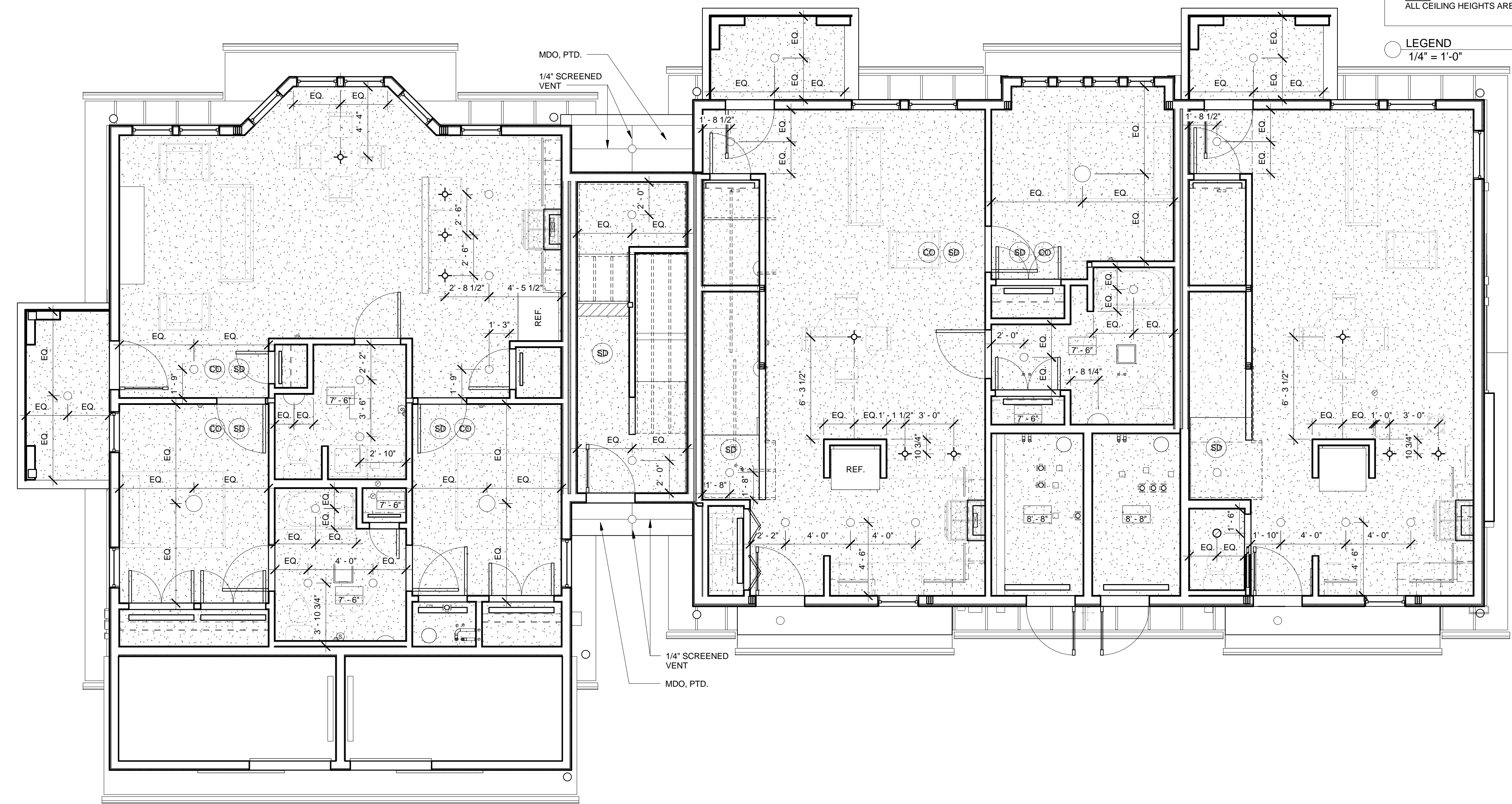
SHEET
A107

GRAPHIC LEGEND

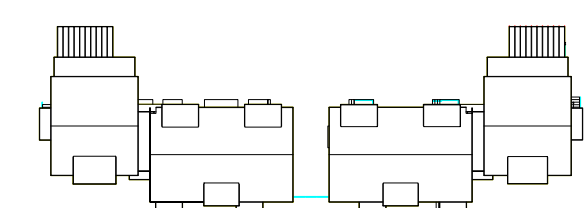
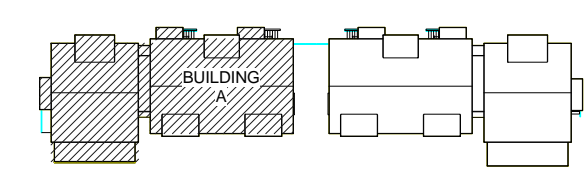
- RECESSED DOWNLIGHT
- WALL MOUNTED FIXTURE
- PENDANT FIXTURE
- 12" DIA. SURFACE MOUNTED FIXTURE
- 24" FLUORESCENT LIGHT
- 36" FLUORESCENT LIGHT
- 48" FLUORESCENT LIGHT
- 60" FLUORESCENT LIGHT
- MECHANICAL SUPPLY OR RETURN
- GWB CEILING
- CEILING TYPE
CEILING HEIGHT
- WALL TAG IDENTIFICATION

NOTE:
ALL CEILING HEIGHTS ARE +8'-0" A.F.F. UNLESS NOTED OTHERWISE.

LEGEND
1/4" = 1'-0"



A5 1ST FLOOR CEILING PLAN BLDG. A
1/4" = 1'-0"



D

C

B

A

C

B

A

5

4

3

2

1