

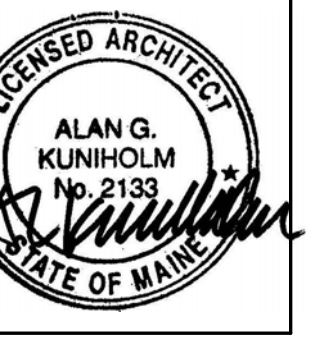


ARCHITECTS

49 DARTMOUTH STREET  
PORTLAND, MAINE 04101  
207-775-1059  
www.pdtarchs.com

COPYRIGHT 2012  
PDT Architects  
Reuse or reproduction of  
the contents of this document is not  
permitted without written  
permission of PDT Architects.

ADAMS SCHOOL REDEVELOPMENT  
Portland, Maine



JOB NO.  
08-056

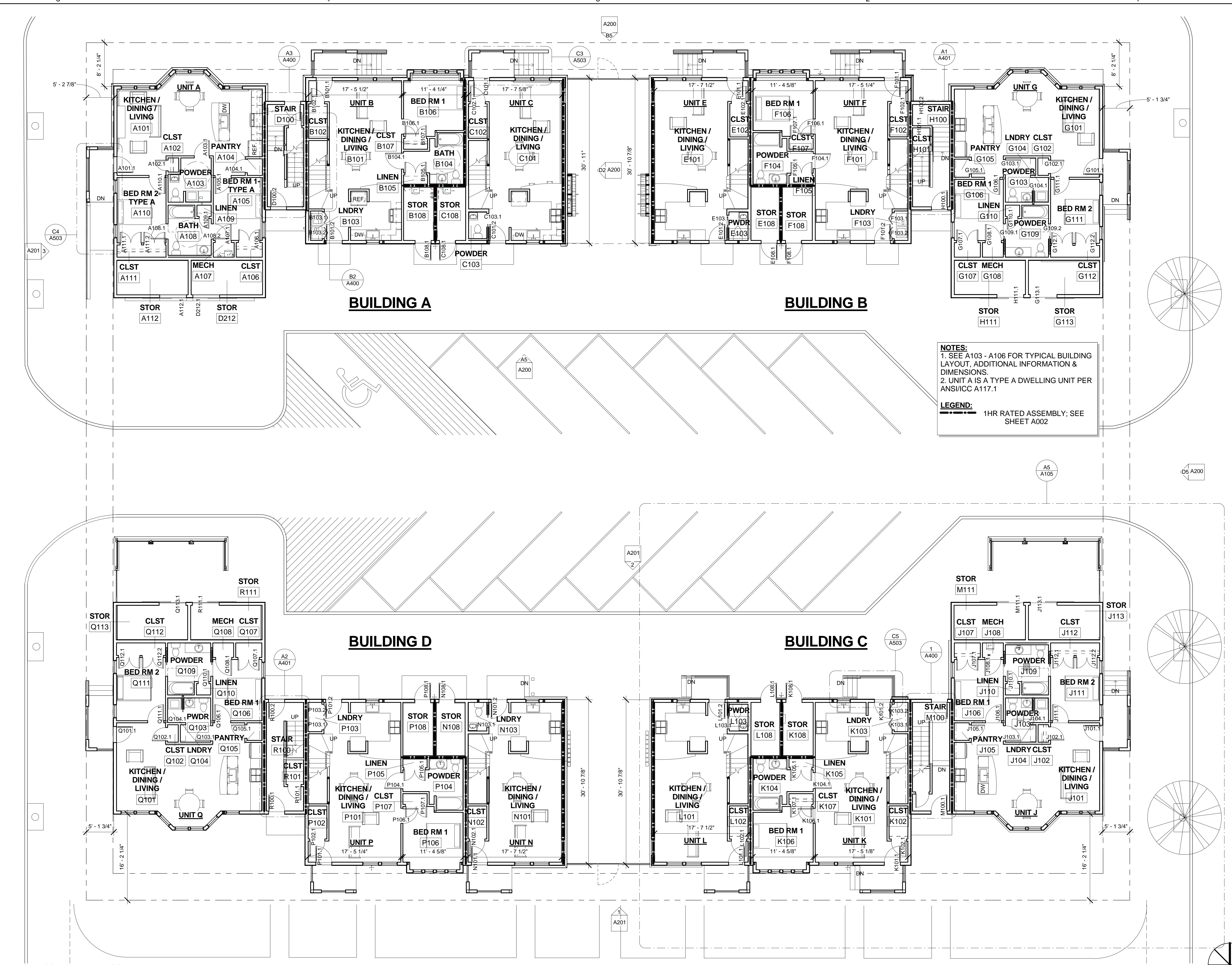
DRWN. CHK  
Checker

SCALE:  
1/8" = 1'-0"

ISSUE  
5 MARCH 2012

TITLE  
GROUND FLOOR -  
ALL BUILDINGS

SHEET  
**A101**



**NOTES:**  
1. SEE A103 - A106 FOR TYPICAL BUILDING LAYOUT, ADDITIONAL INFORMATION & DIMENSIONS.  
2. UNIT A IS A TYPE A DWELLING UNIT PER ANSI/ICC A117.1

**LEGEND:**  
1HR RATED ASSEMBLY; SEE SHEET A002

A5 1ST FLOOR - ALL BUILDINGS  
1/8" = 1'-0"

