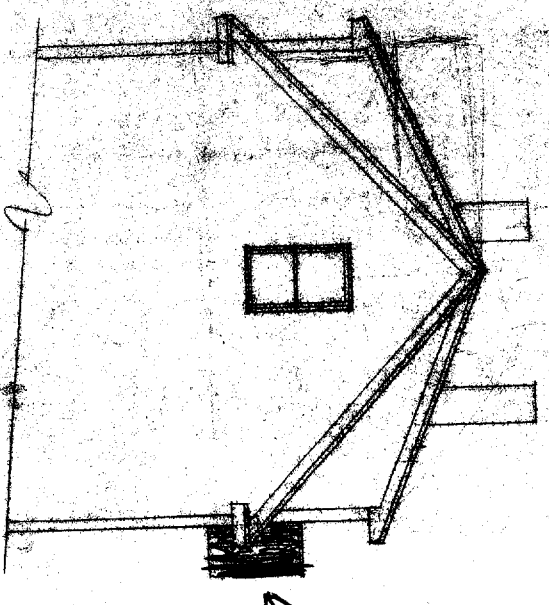
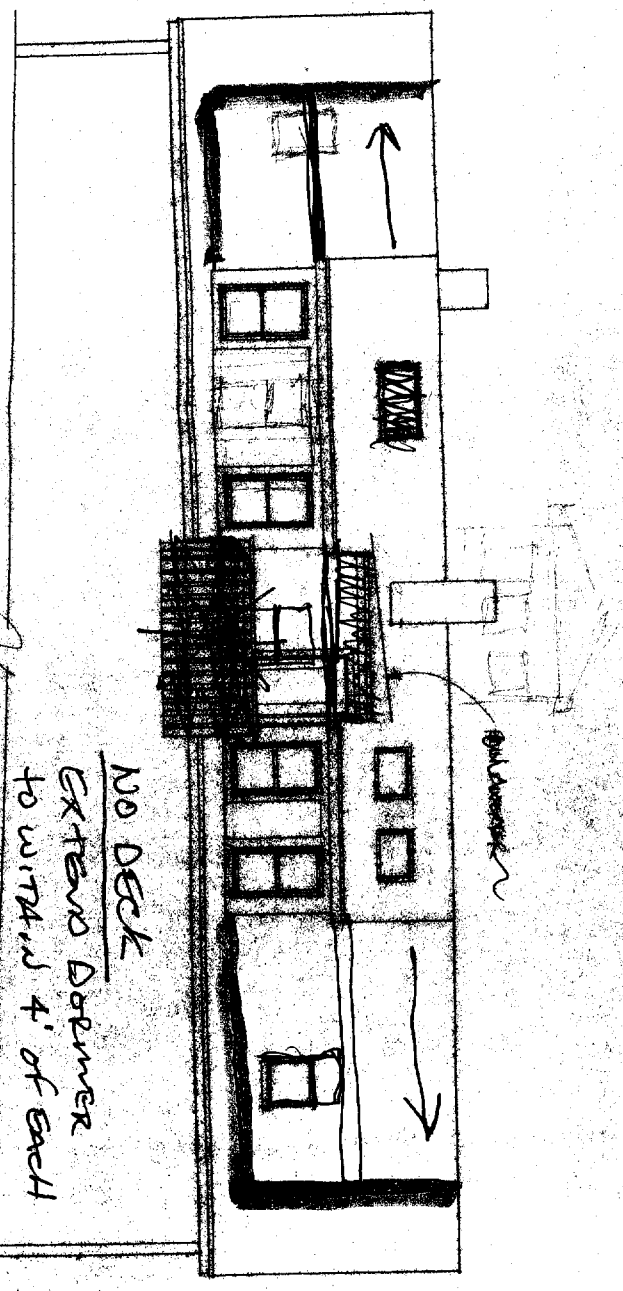


BACK ELEVATION



FRONT ELEVATION

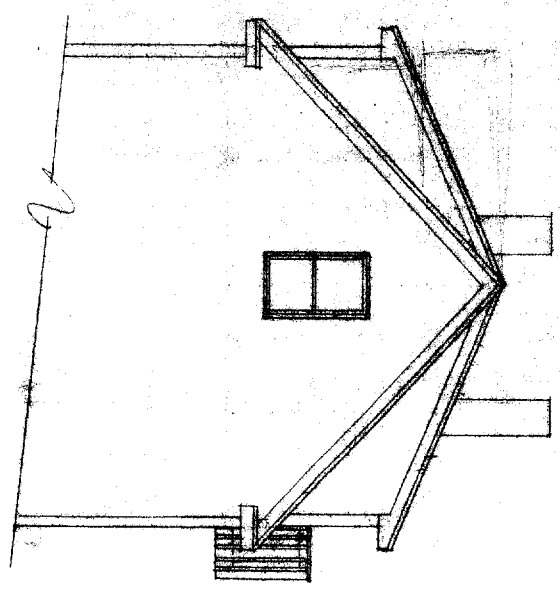


RIGHT ELEVATION

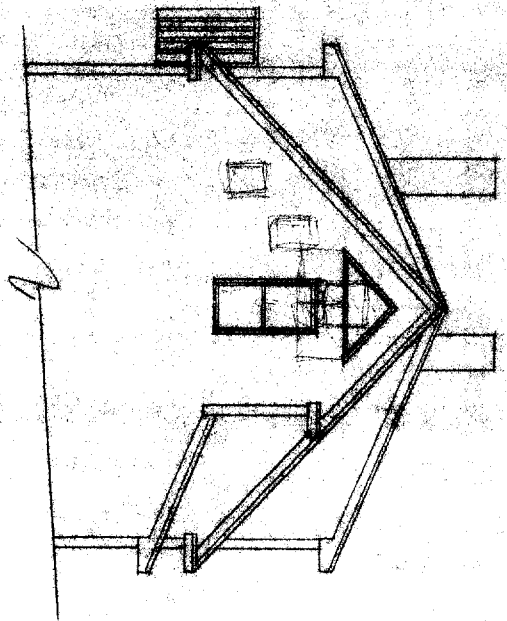
DEPT. OF BUILDING INSPECTION
CITY OF PORTLAND, ME
DEC - 9 2003
RECEIVED

TITLE

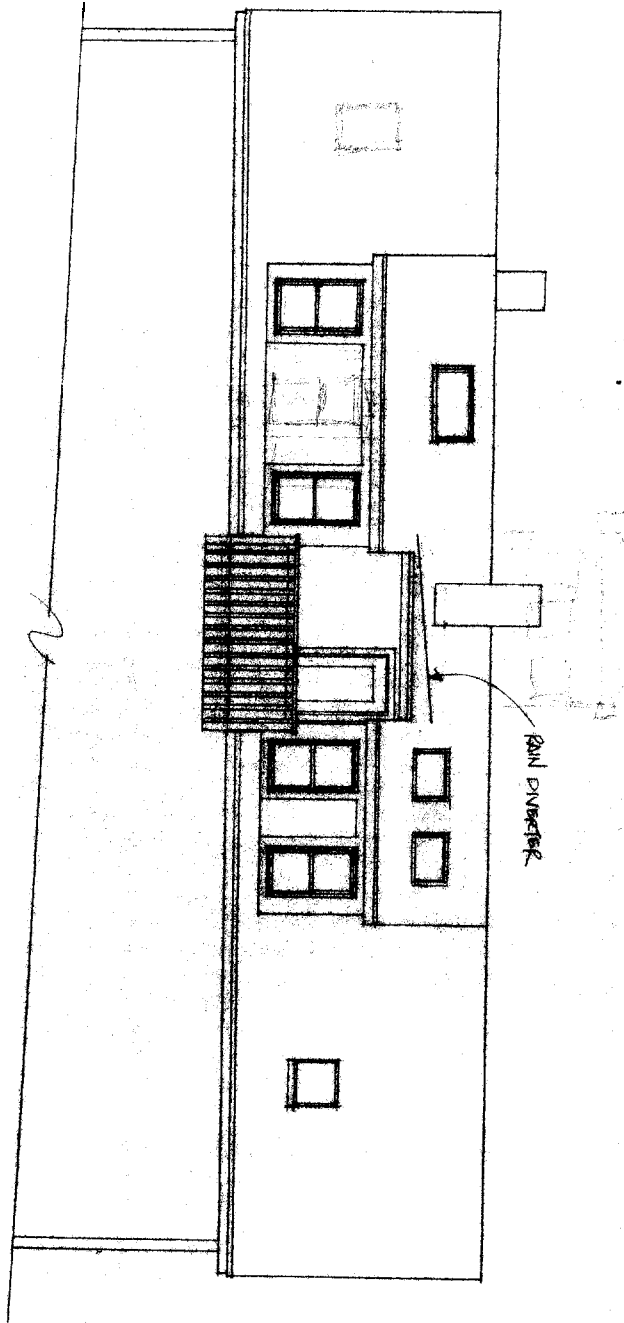
FRONT ELEVATION 1/4" = 1'-0"



REAR ELEVATION

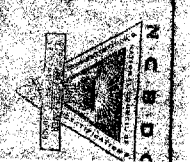
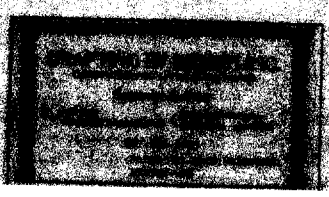


RIGHT ELEVATION 1/4" = 1'-0"



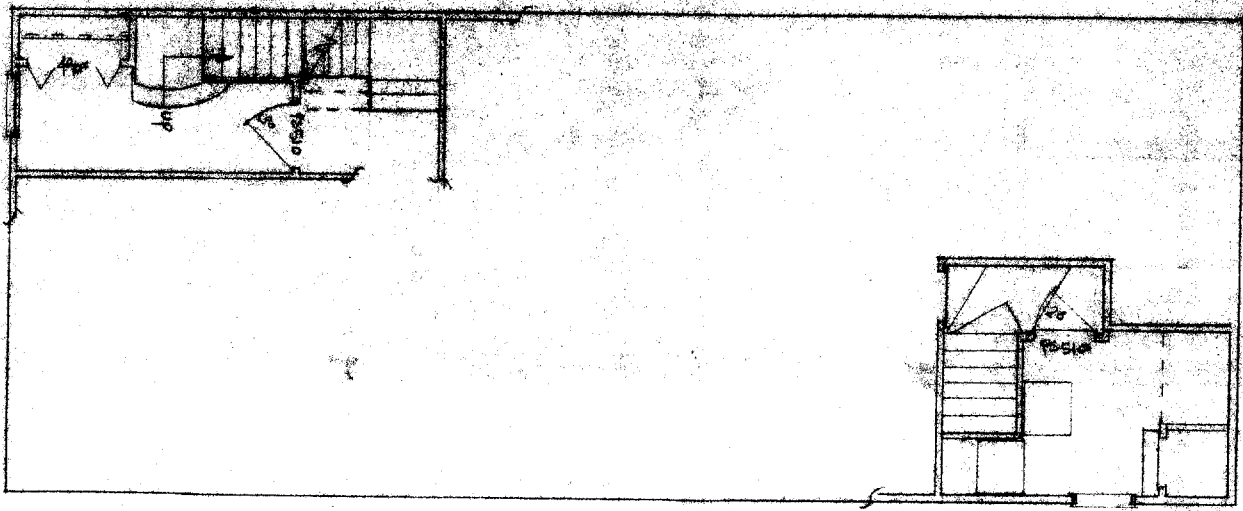
TITLE
ELEVATIONS

PROJECT
MURRAY RESIDENCE
PORTLAND, ME

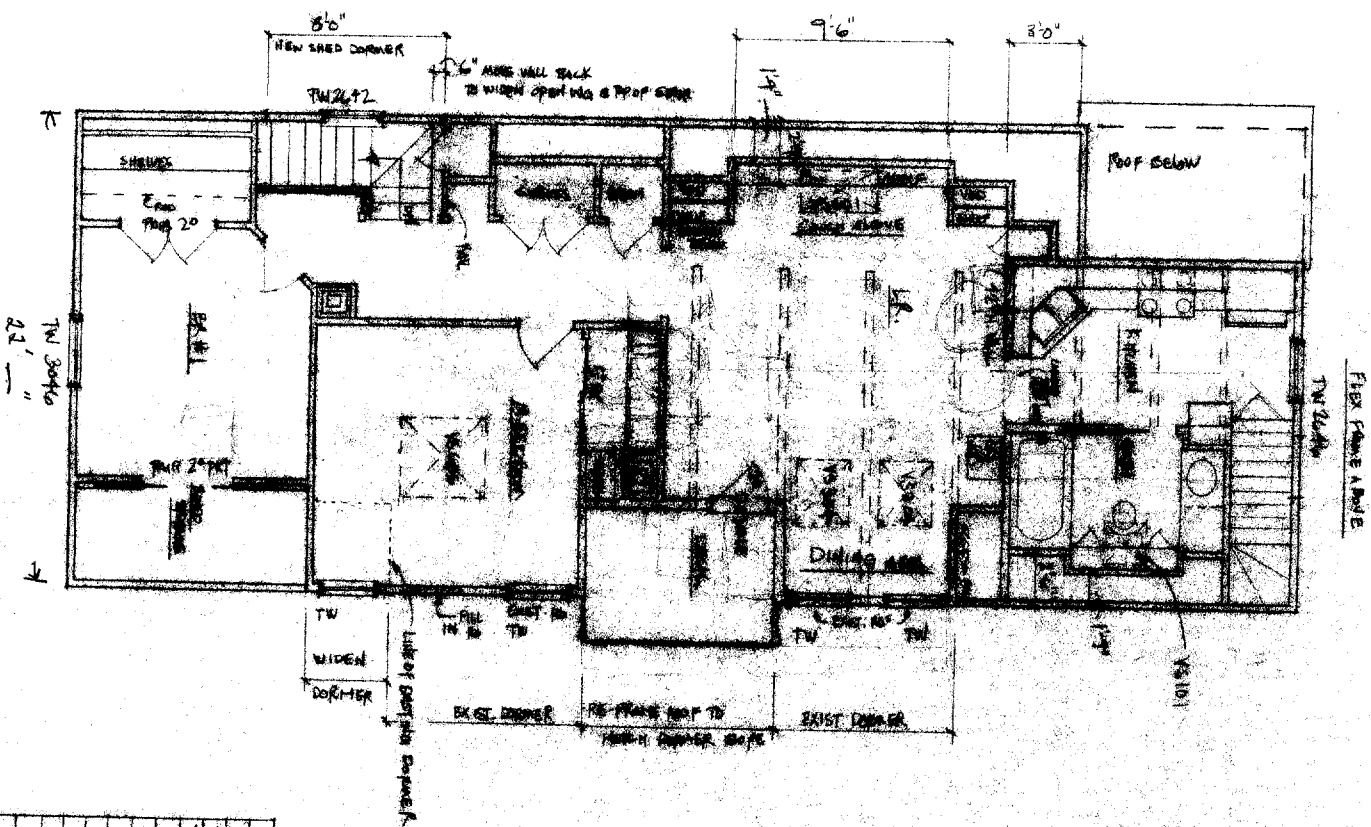


1

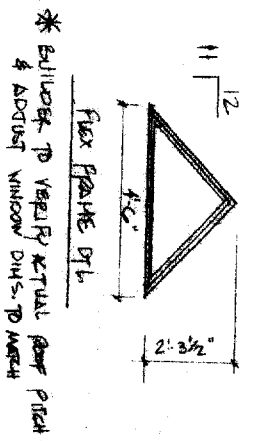
STAIRS & SECOND FLOOR PLAN 1/4" = 1'-0"



THIRD FLOOR PLAN 1/4" = 1'-0"



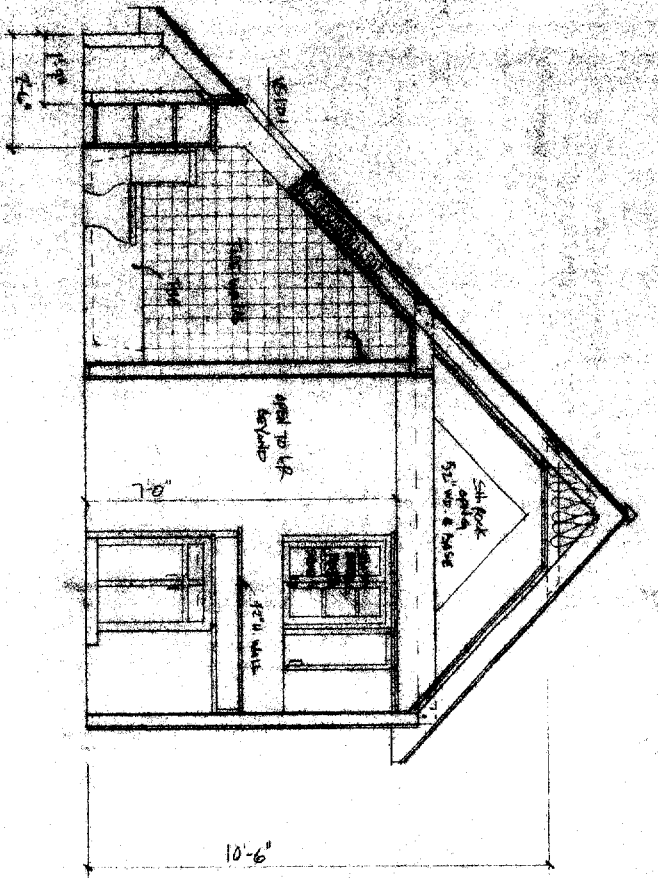
NO.	DESCRIPTION	TYPE	SIZE	NOTES
1	TV 2042	Window	3'-2 1/2" x 4'-7 1/4"	
2	TV 2042	Window	1'-8 1/2" x 4'-9 1/4"	
3	TV 2042	Window	7'-8 1/2" x 4'-5 1/4"	
4	TV 2042	Window	4'-6 1/2" x 2'-3 1/4"	
5	VS 101	Window	3'-8 1/2" x 3'-10 1/4"	
6	VS 101	Window	2'-8 1/2" x 2'-4"	
7	VS 101	Window	7'-8 1/2" x 8'-3 1/4"	
8	VS 101	Window	1'-9 1/2" x 2'-4"	
9	VS 101	Window	3'-3 1/2" x 6'-11"	
10	VS 101	Window	3'-11 1/2" x 6'-11"	
11	VS 101	Window	2'-8 1/2" x 6'-11"	



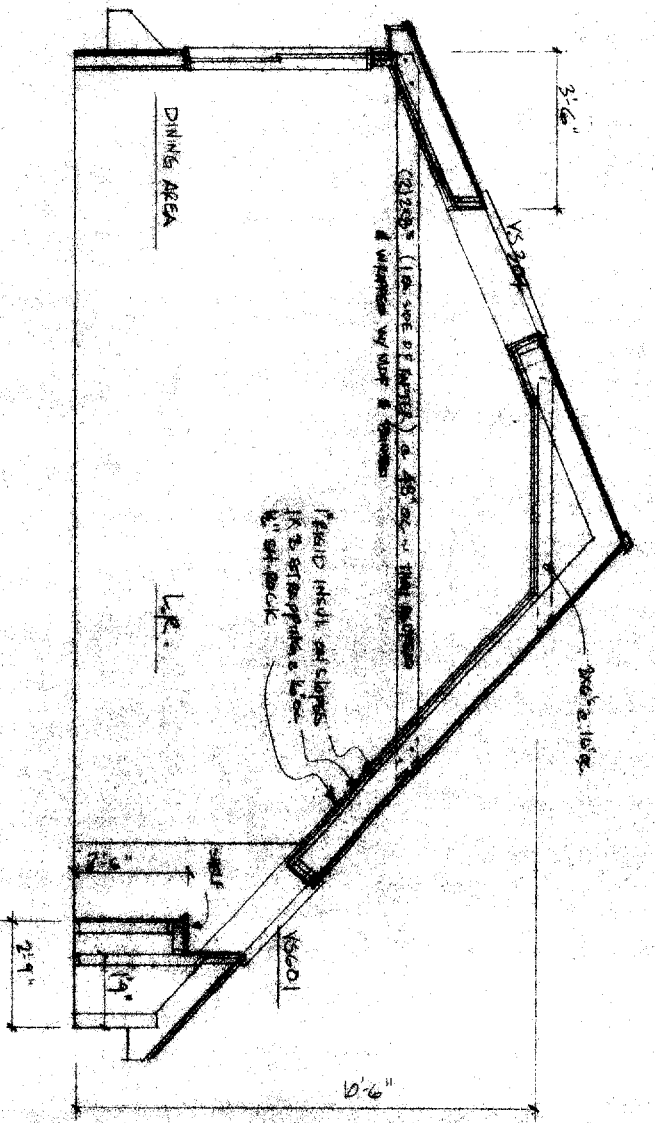
* BUILDING TO VERIFY ACTUAL FLOOR PITCH & ADJUST WINDOW DIMS. TO MATCH

STAIRS & SECOND FLOOR
THIRD FLOOR PLAN

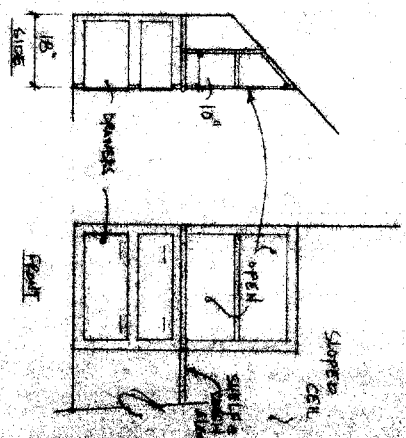
PLANNED BY
MURRAY RESIDUAL
PAPALINO, M.S.



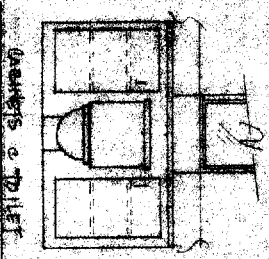
DETAIL of BATH & KITCHEN 3/4"=1'-0"



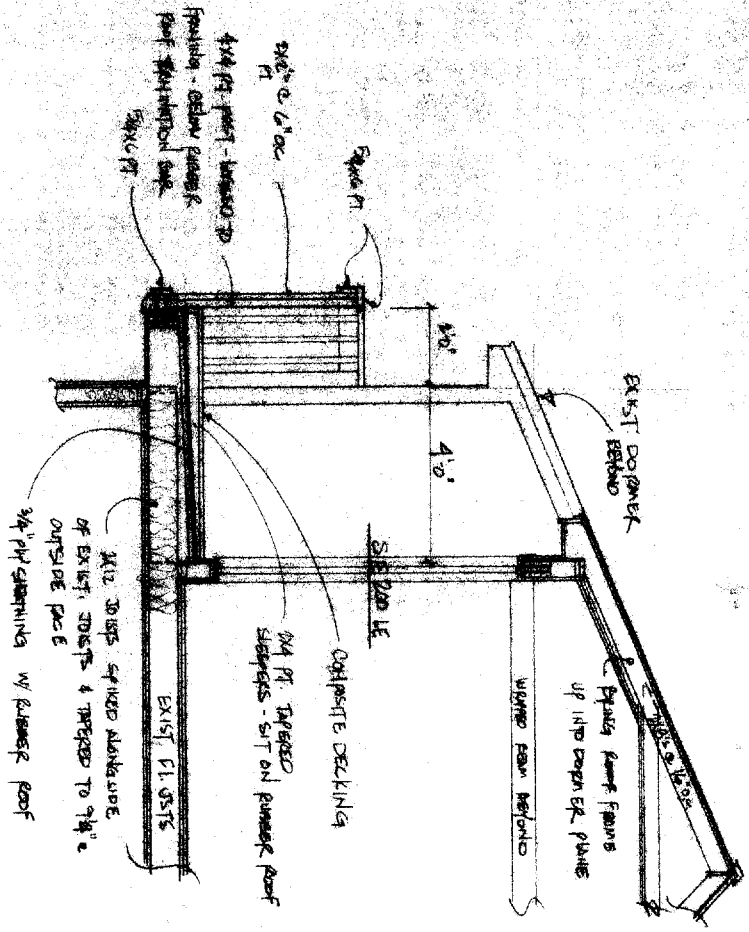
DETAIL of DINING & LIVING AREA 3/4"=1'-0"



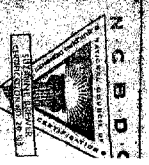
DETAIL of CROSS SECTION STONE CHIMNEY



DETAIL of TOILET



DETAIL of BALCONY DECK 3/4"=1'-0"

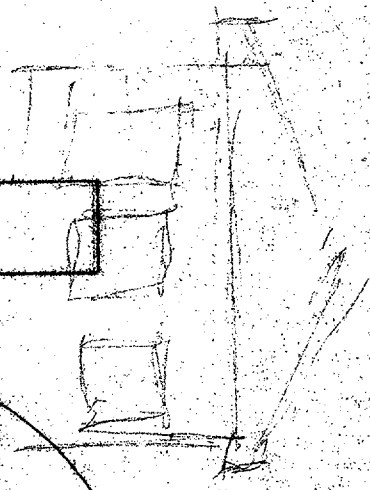
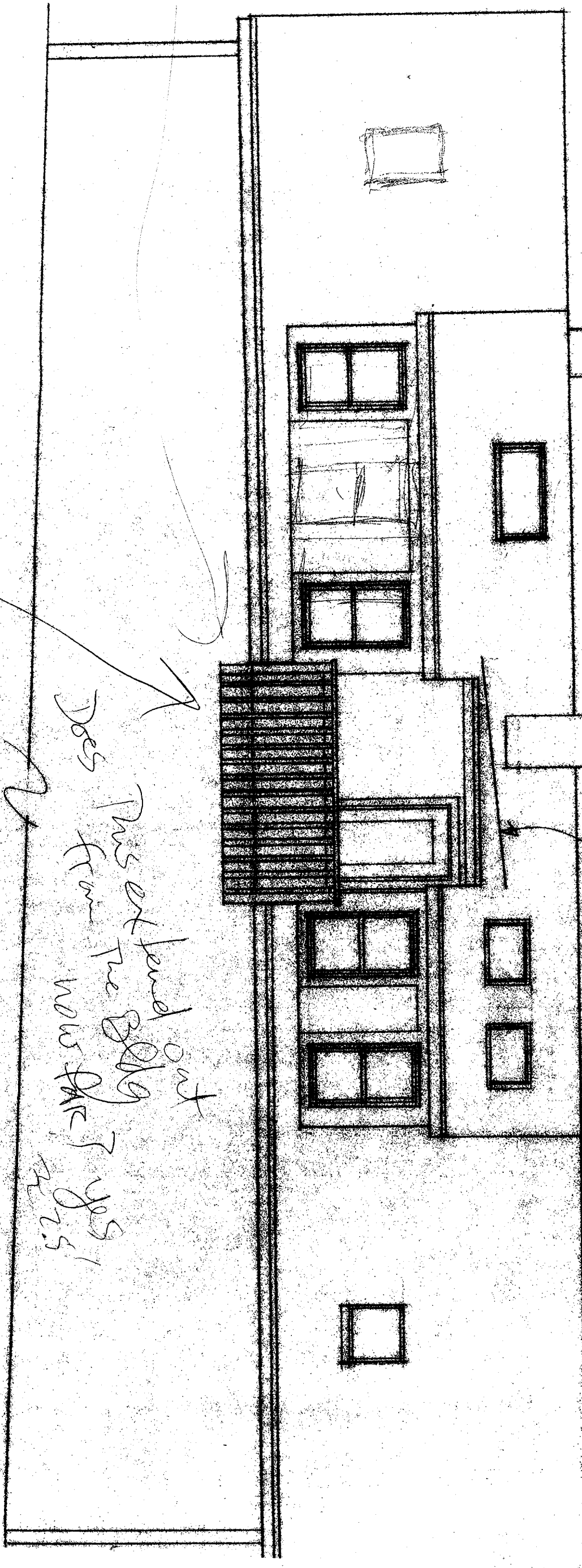


PROJECT
HUBBARD RESIDENCE
PORTLAND, ME.

DATE
DETAILS

3

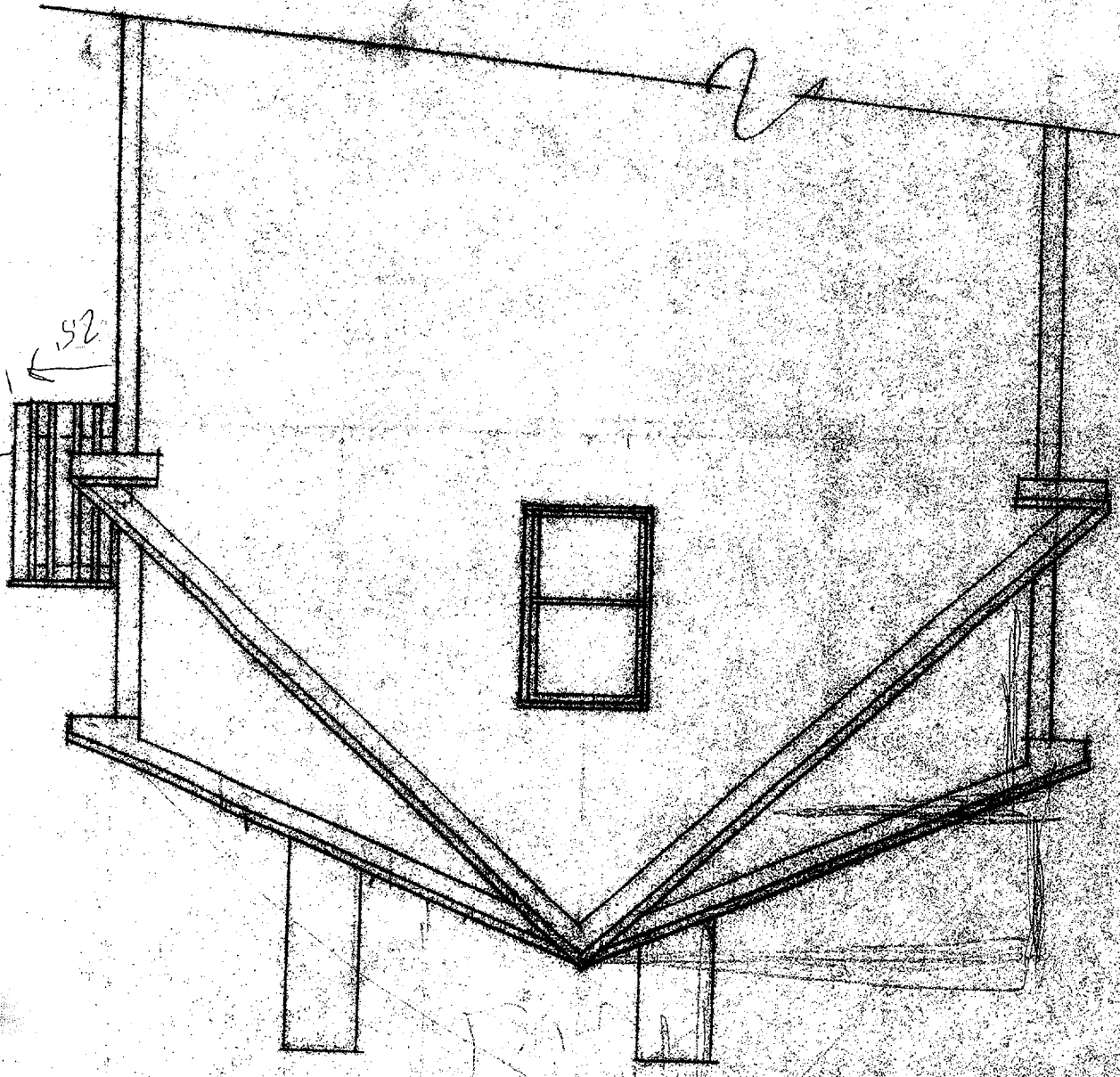
RIGHT ELEVATION 4/9/10



RAIN DIVERTER

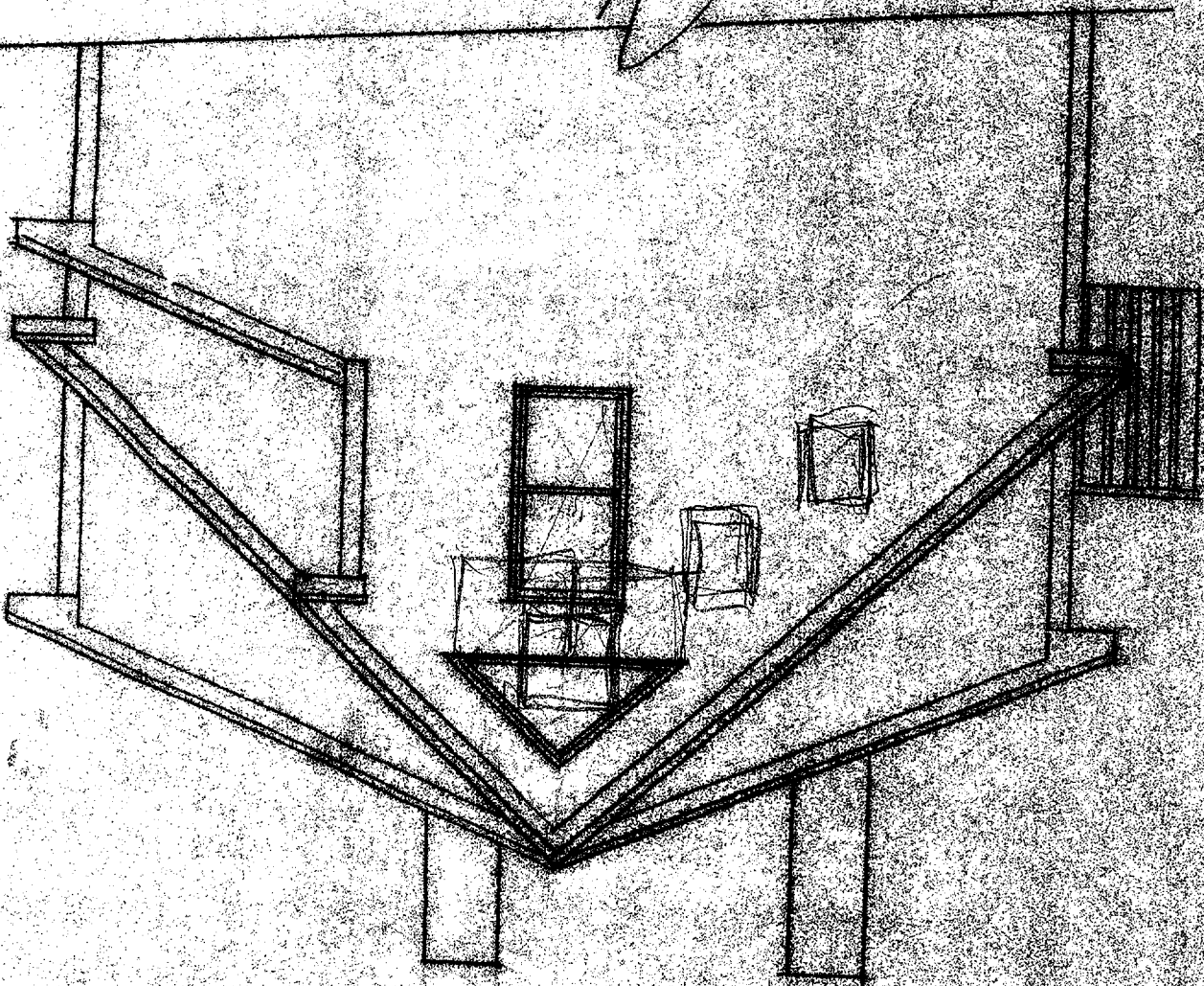
FRONT ELEVATION

✓



REAR ELEVATION

✓



THIRD FLOOR PLAN 1/16/10

TW 3046
22'

46'

8'0" NEW SHED CORNER

TW 2642

2'6" MORE WALL BACK TO WIDEN OPENING @ TOP OF STAIR

9'6"

1'5"

8'0"

ROOF BELOW

10'

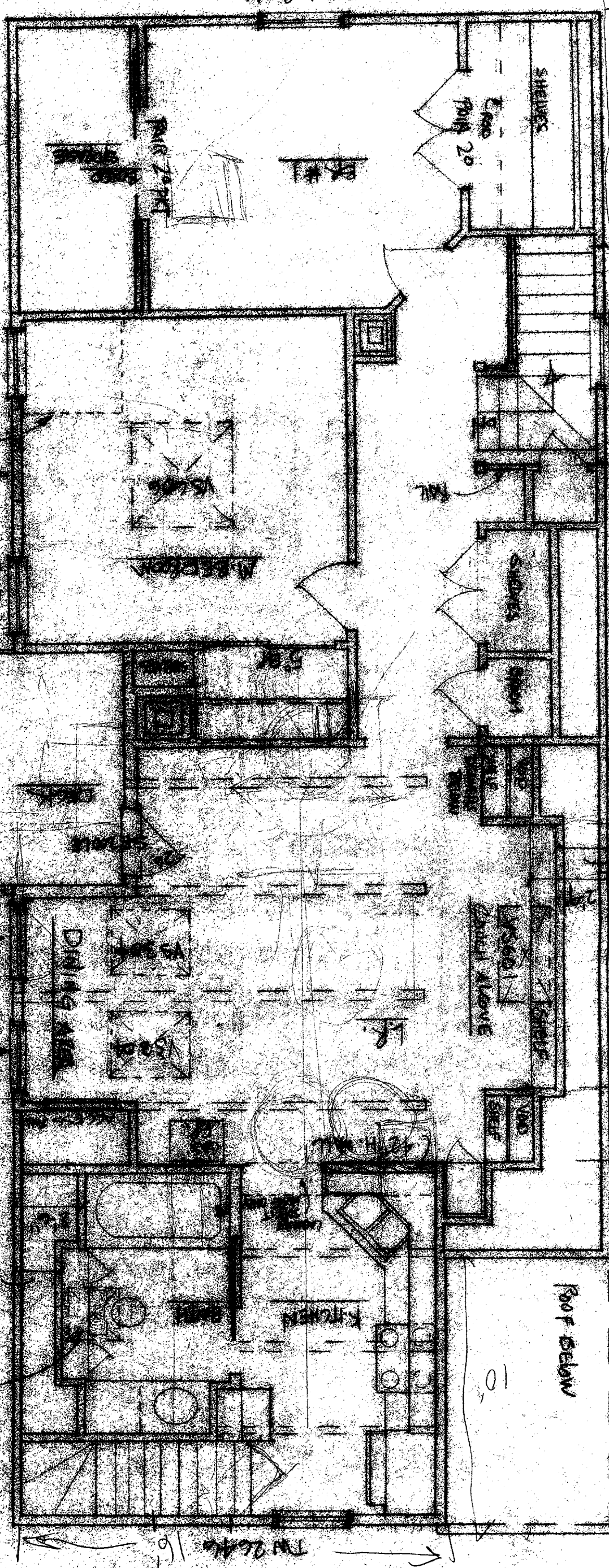
FLEX FRAME ABOVE TW 2646 16'

WIDEN DOORWAY
TW
TW
TW

EXIST DOORWAY

RE-FRAME WOLF TO MATCH EXIST DOORWAY

EXIST DOORWAY



12	28
20	28
28	28
36	28
44	28
52	28
60	28
68	28
76	28
84	28
92	28
100	28
108	28
116	28
124	28
132	28
140	28
148	28
156	28
164	28
172	28
180	28
188	28
196	28
204	28
212	28
220	28
228	28
236	28
244	28
252	28
260	28
268	28
276	28
284	28
292	28
300	28
308	28
316	28
324	28
332	28
340	28
348	28
356	28
364	28
372	28
380	28
388	28
396	28
404	28
412	28
420	28
428	28
436	28
444	28
452	28
460	28
468	28
476	28
484	28
492	28
500	28
508	28
516	28
524	28
532	28
540	28
548	28
556	28
564	28
572	28
580	28
588	28
596	28
604	28
612	28
620	28
628	28
636	28
644	28
652	28
660	28
668	28
676	28
684	28
692	28
700	28
708	28
716	28
724	28
732	28
740	28
748	28
756	28
764	28
772	28
780	28
788	28
796	28
804	28
812	28
820	28
828	28
836	28
844	28
852	28
860	28
868	28
876	28
884	28
892	28
900	28
908	28
916	28
924	28
932	28
940	28
948	28
956	28
964	28
972	28
980	28
988	28
996	28
1004	28
1012	28
1020	28
1028	28
1036	28
1044	28
1052	28
1060	28
1068	28
1076	28
1084	28
1092	28
1100	28
1108	28
1116	28
1124	28
1132	28
1140	28
1148	28
1156	28
1164	28
1172	28
1180	28
1188	28
1196	28
1204	28
1212	28
1220	28
1228	28
1236	28
1244	28
1252	28
1260	28
1268	28
1276	28
1284	28
1292	28
1300	28
1308	28
1316	28
1324	28
1332	28
1340	28
1348	28
1356	28
1364	28
1372	28
1380	28
1388	28
1396	28
1404	28
1412	28
1420	28
1428	28
1436	28
1444	28
1452	28
1460	28
1468	28
1476	28
1484	28
1492	28
1500	28
1508	28
1516	28
1524	28
1532	28
1540	28
1548	28
1556	28
1564	28
1572	28
1580	28
1588	28
1596	28
1604	28
1612	28
1620	28
1628	28
1636	28
1644	28
1652	28
1660	28
1668	28
1676	28
1684	28
1692	28
1700	28
1708	28
1716	28
1724	28
1732	28
1740	28
1748	28
1756	28
1764	28
1772	28
1780	28
1788	28
1796	28
1804	28
1812	28
1820	28
1828	28
1836	28
1844	28
1852	28
1860	28
1868	28
1876	28
1884	28
1892	28
1900	28
1908	28
1916	28
1924	28
1932	28
1940	28
1948	28
1956	28
1964	28
1972	28
1980	28
1988	28
1996	28
2004	28
2012	28
2020	28
2028	28
2036	28
2044	28
2052	28
2060	28
2068	28
2076	28
2084	28
2092	28
2100	28
2108	28
2116	28
2124	28
2132	28
2140	28
2148	28
2156	28
2164	28
2172	28
2180	28
2188	28
2196	28
2204	28
2212	28
2220	28
2228	28
2236	28
2244	28
2252	28
2260	28
2268	28
2276	28
2284	28
2292	28
2300	28
2308	28
2316	28
2324	28
2332	28
2340	28
2348	28
2356	28
2364	28
2372	28
2380	28
2388	28
2396	28
2404	28
2412	28
2420	28
2428	28
2436	28
2444	28
2452	28
2460	28
2468	28
2476	28
2484	28
2492	28
2500	28

10x16
22x46 = 1012
1028
= 16