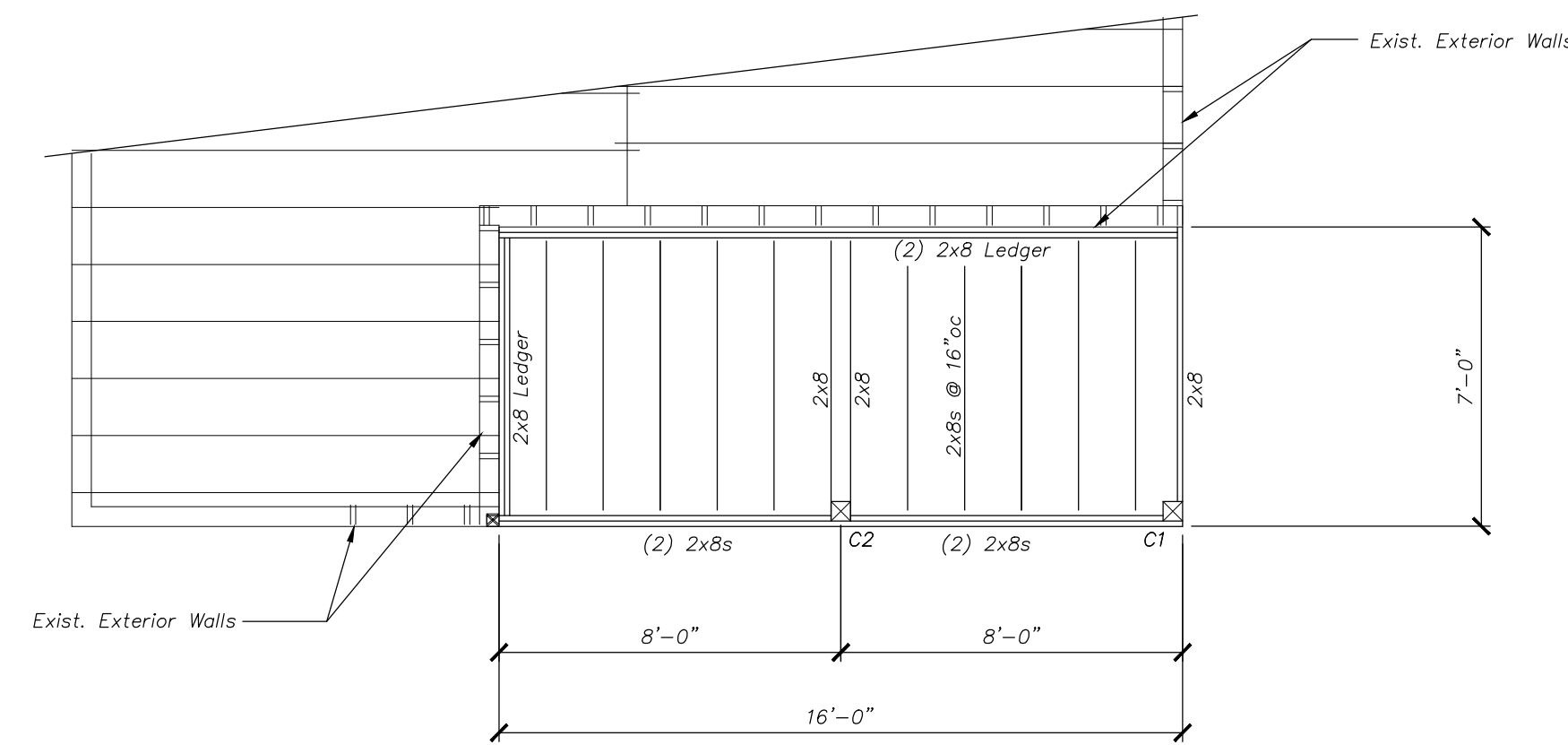


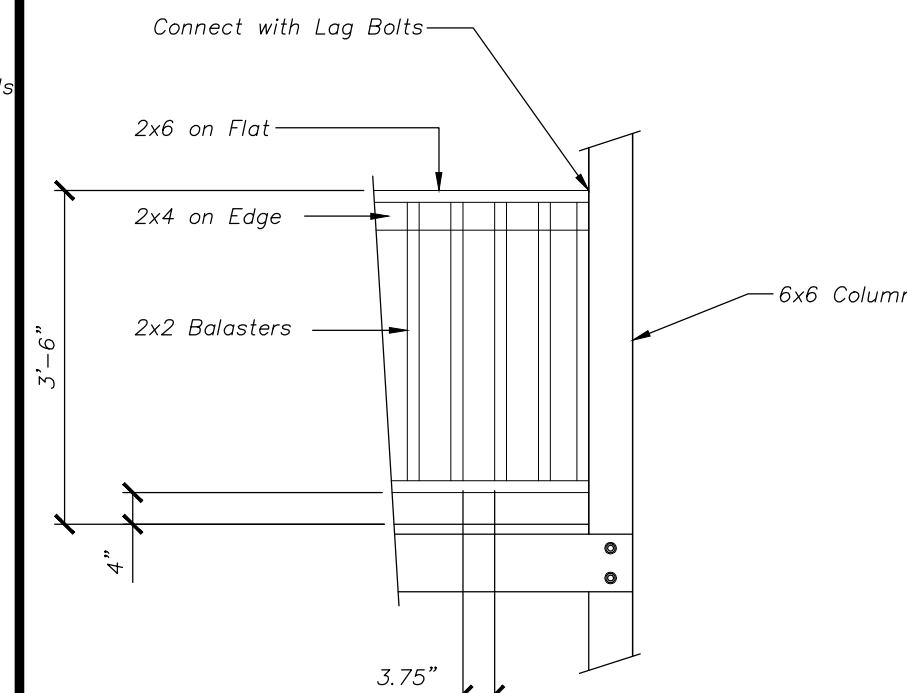
**RE-BUILT DECK - LEVEL THREE FRAMING**  
Scale: 1/4" = 1'-0"

All Deck Framing is New and Shall be Pressure Treated. Connect 2x8 Joists Using Stainless Steel Joist Hangers. C1 = C2 = New 6x6 PT Columns. Provide 5/4 PT Decking or Equal.

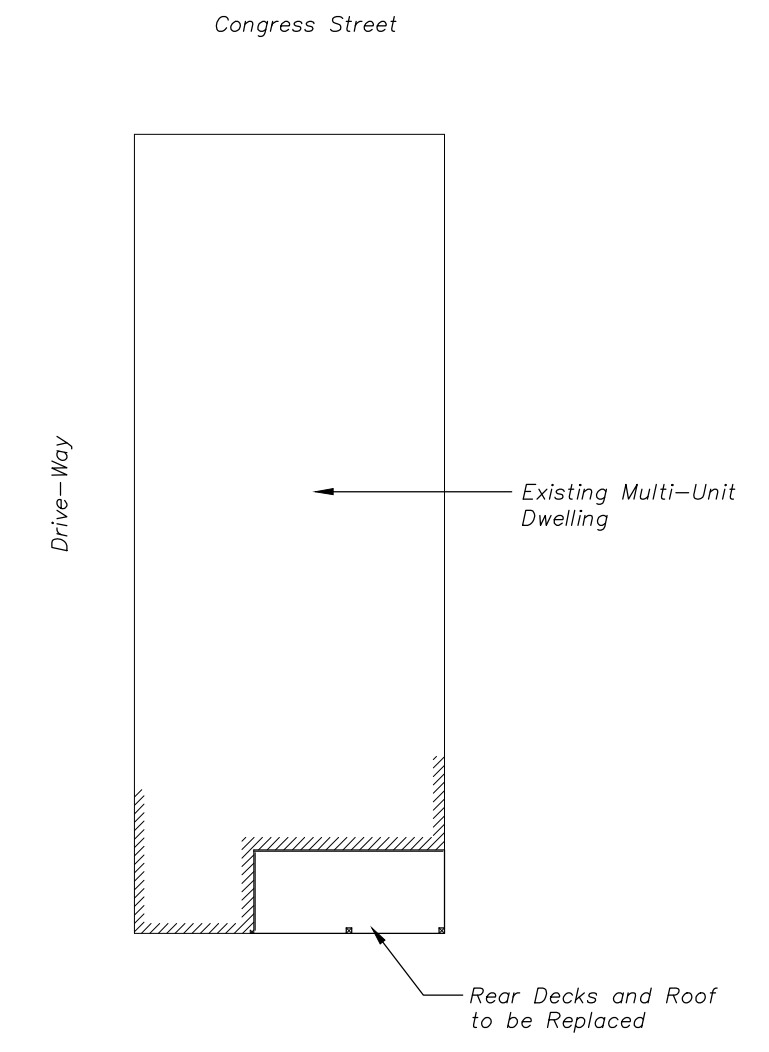


**RE-BUILT DECK - ROOF LEVEL FRAMING**  
Scale: 1/4" = 1'-0"

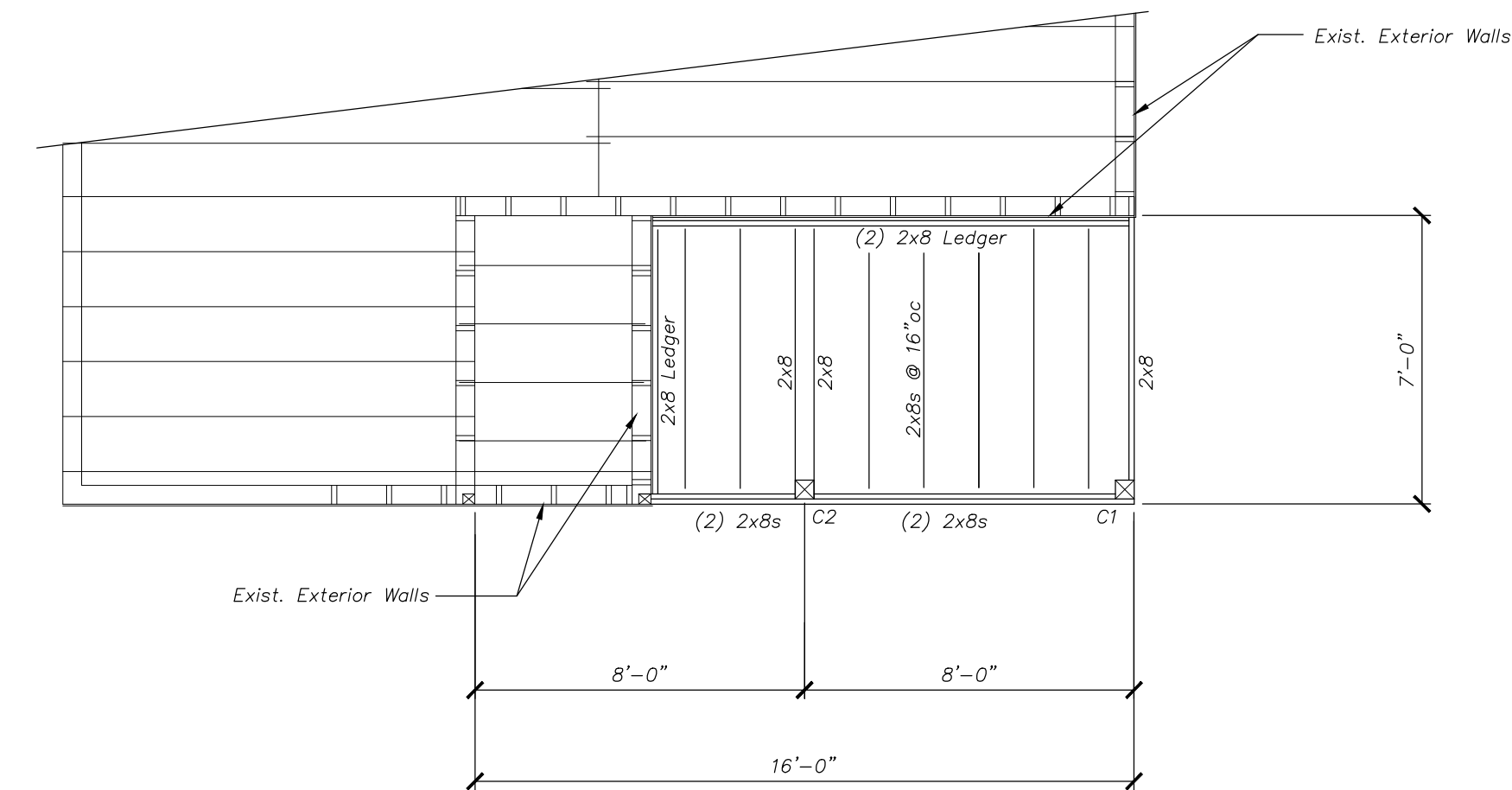
All Deck Framing is New and Shall be Pressure Treated. Connect 2x8 Joists Using Stainless Steel Joist Hangers. C1 = C2 = New 6x6 PT Columns. Provide 5/4 PT Decking or Equal.



**DETAIL C Railing Construction**  
Scale: 1/2" = 1'-0"

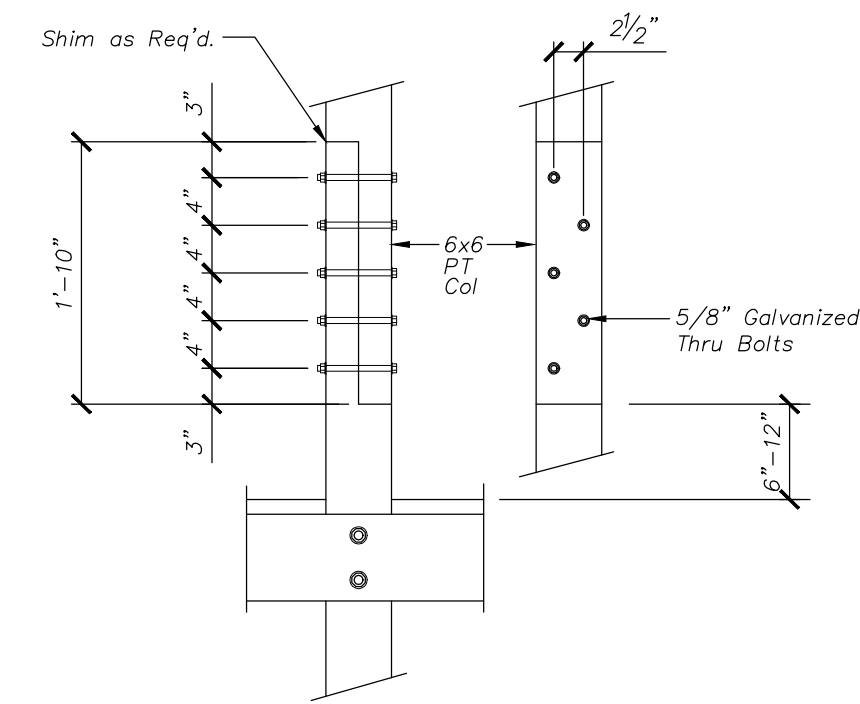


**BUILDING / DECK - KEY PLAN**  
Scale: 1/32" = 1'-0"

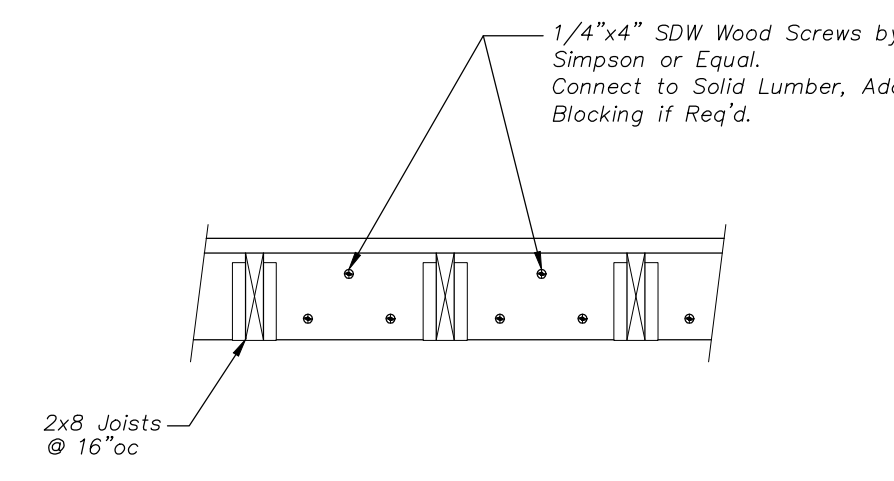


**RE-BUILT DECK - LEVEL TWO FRAMING**  
Scale: 1/4" = 1'-0"

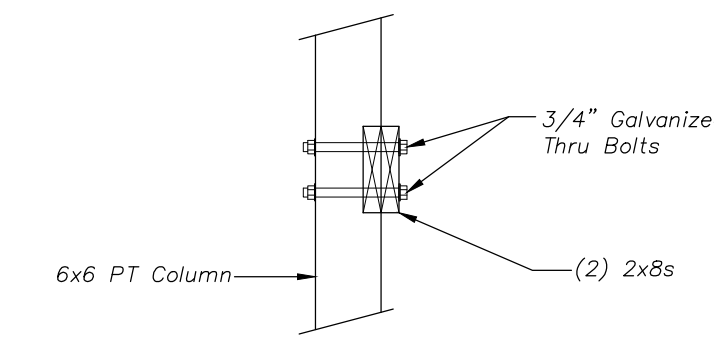
All Deck Framing is New and Shall be Pressure Treated. Connect 2x8 Joists Using Stainless Steel Joist Hangers. C1 = C2 = New 6x6 PT Columns. Provide 5/4 PT Decking or Equal.



**DETAIL A Column Splice**  
Scale: 1/2" = 1'-0"



**DETAIL B Ledger Connection**  
Scale: 1/2" = 1'-0"



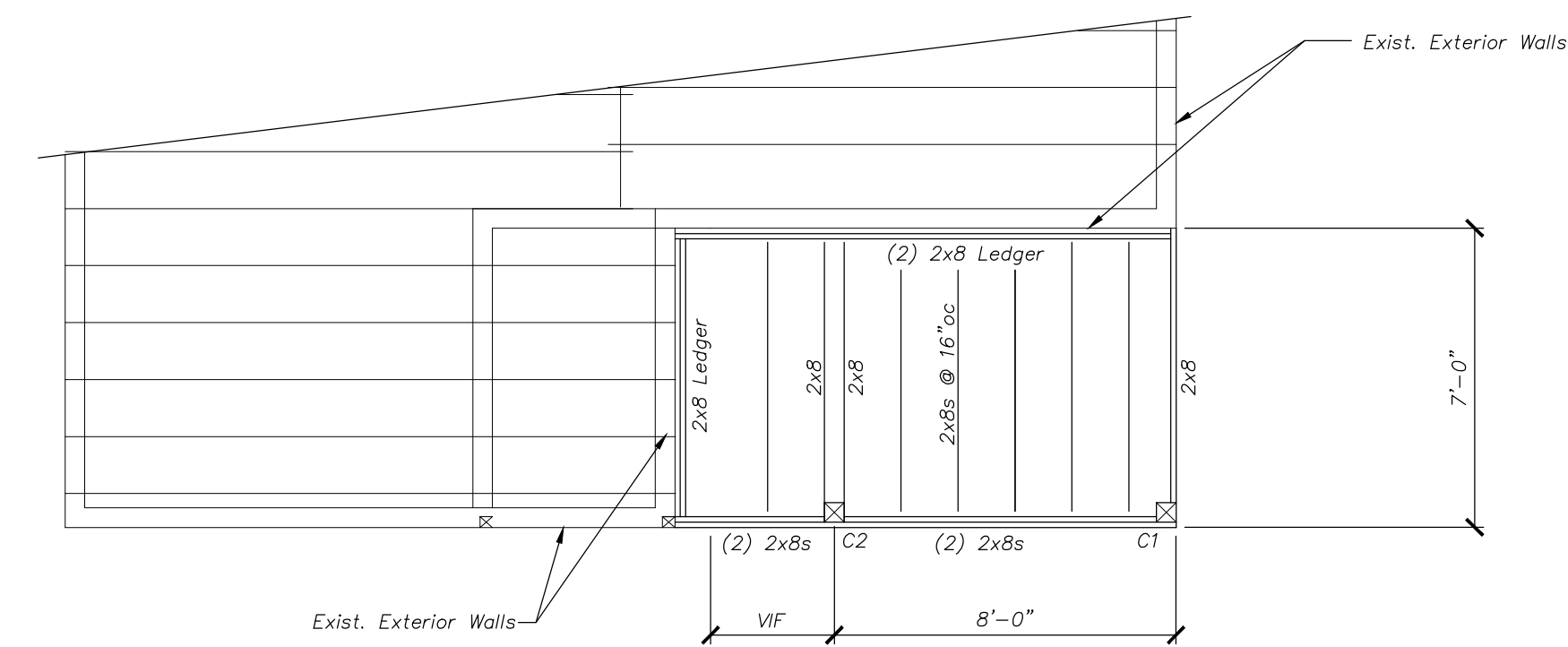
**DETAIL D Girder Column Connection**  
Scale: 1/2" = 1'-0"

**GENERAL NOTES:**

- ALL DIMENSIONS AND CONDITIONS MUST BE VERIFIED IN THE FIELD. NOTIFY ENGINEER OF ANY DISCREPANCIES PRIOR TO PROCEEDING WITH THE WORK.
- ALL APPLICABLE FEDERAL, STATE, AND MUNICIPAL REGULATIONS SHALL BE FOLLOWED, INCLUDING THE FEDERAL DEPARTMENT OF LABOR OCCUPATIONAL SAFETY AND HEALTH ACT.

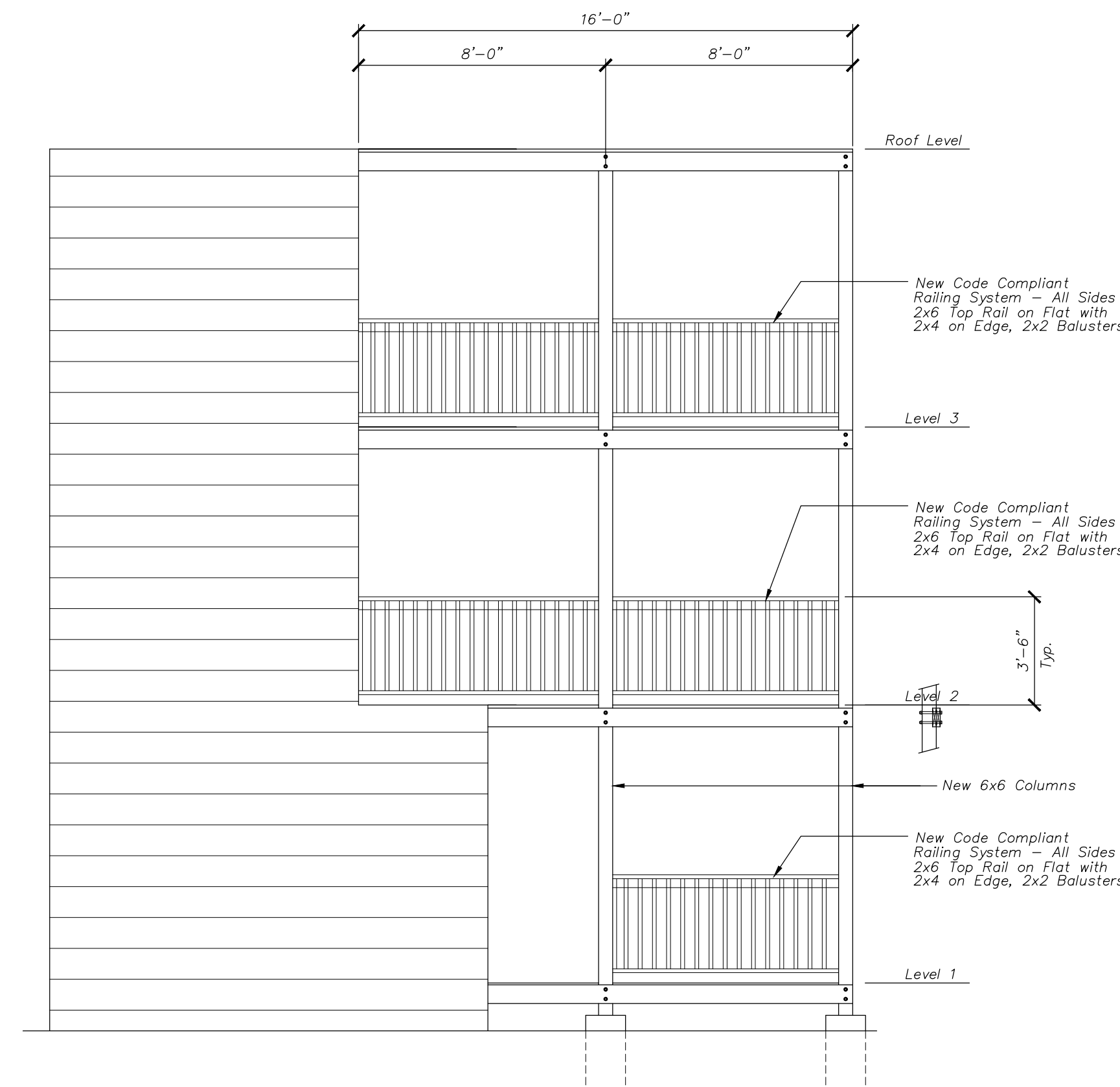
**STRUCTURAL DESIGN CRITERIA:**

- BUILDING CODE: 2009 EDITION OF THE INTERNATIONAL BUILDING CODE.
- DESIGN LIVE LOAD = 40 PSF (matching Unit served)
- SNOW:
  - GROUND SNOW LOAD = 60 PSF
  - IMPORTANCE FACTOR Is = 1.0
  - EXPOSURE FACTOR, Ce = 0.7
  - FLAT ROOF SNOW LOAD = 42 PSF

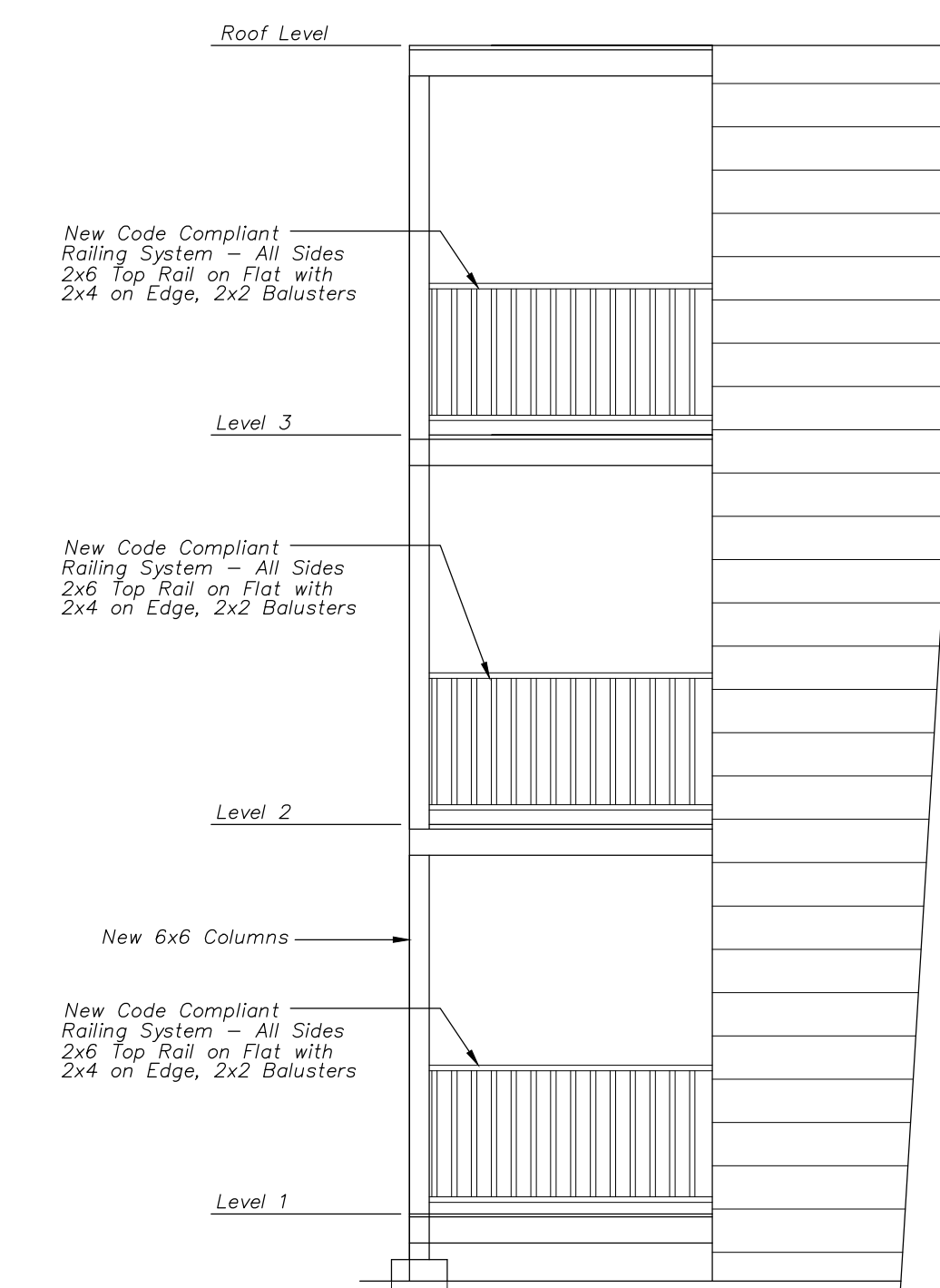


**RE-BUILT DECK - LEVEL ONE FRAMING**  
Scale: 1/4" = 1'-0"

All Deck Framing is New and Shall be Pressure Treated. Connect 2x8 Joists Using Stainless Steel Joist Hangers. C1 = C2 = New 6x6 PT Columns. Provide 5/4 PT Decking or Equal.



**RE-BUILT DECKS - REAR ELEVATION**  
Scale: 1/4" = 1'-0"



**RE-BUILT DECKS - SIDE ELEVATION**  
Scale: 1/4" = 1'-0"

Shelley Engineering, Inc.  
Structural Consultants  
P.O. Box 1030  
Gray, Maine 04039  
Phone (207) 667-8031  
www.ShelleyEngineering.com

SEI

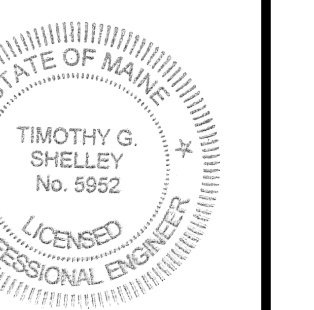
Added Det-D	6/8/15
Review	6/2/15
Issue	Date

56 Congress Street  
Deck Replacement

ME

Portland

Date	6/2/15
Designed By:	TGS



SHEET TITLE:

Structural

S1 of 1

SEI Job # 2015-103