

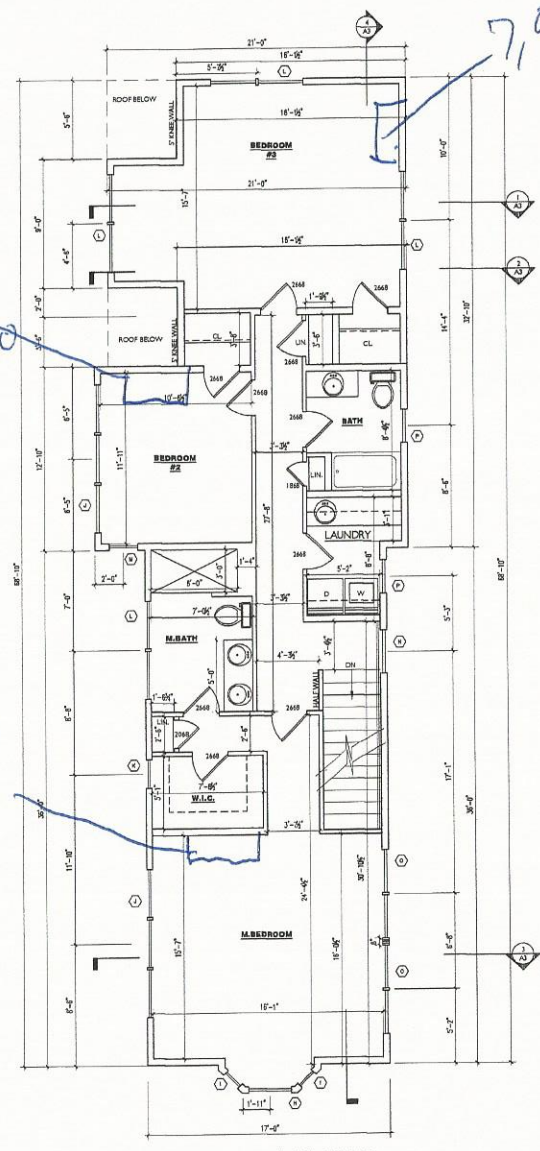
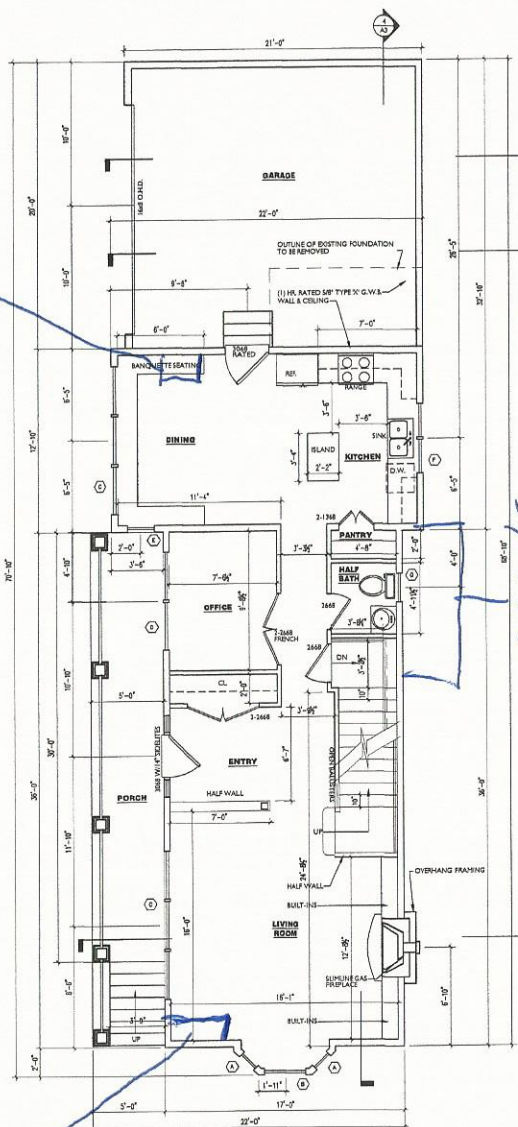
WINDOW SCHEDULE

WINDOWS ARE BASED ON ANDERSEN 400 SERIES

NO.	SIZE	TYPE	MUNTIN	REMARKS
(1)	CUSTOM 1'-7" W x 6'-6" H 1/2" A	DOUBLE HUNG	AS SHOWN	
(2)	7W2010	DOUBLE HUNG	AS SHOWN	MEETS EGRESS REQUIREMENTS
(3)	3-W2010	DOUBLE HUNG	AS SHOWN	MEETS EGRESS REQUIREMENTS
(4)	2-W2010	DOUBLE HUNG	AS SHOWN	MEETS EGRESS REQUIREMENTS
(5)	2-W2010	DOUBLE HUNG	AS SHOWN	MEETS EGRESS REQUIREMENTS
(6)	7W2010	DOUBLE HUNG	AS SHOWN	MEETS EGRESS REQUIREMENTS
(7)	7W2010	DOUBLE HUNG	AS SHOWN	MEETS EGRESS REQUIREMENTS
(8)	7W2010	DOUBLE HUNG	AS SHOWN	MEETS EGRESS REQUIREMENTS
(9)	7W2010	DOUBLE HUNG	AS SHOWN	MEETS EGRESS REQUIREMENTS
(10)	7W2010	DOUBLE HUNG	AS SHOWN	MEETS EGRESS REQUIREMENTS
(11)	7W2010	DOUBLE HUNG	AS SHOWN	MEETS EGRESS REQUIREMENTS
(12)	7W2010	DOUBLE HUNG	AS SHOWN	MEETS EGRESS REQUIREMENTS
(13)	7W2010	DOUBLE HUNG	AS SHOWN	MEETS EGRESS REQUIREMENTS
(14)	7W2010	DOUBLE HUNG	AS SHOWN	MEETS EGRESS REQUIREMENTS
(15)	7W2010	DOUBLE HUNG	AS SHOWN	MEETS EGRESS REQUIREMENTS
(16)	7W2010	DOUBLE HUNG	AS SHOWN	MEETS EGRESS REQUIREMENTS
(17)	7W2010	DOUBLE HUNG	AS SHOWN	MEETS EGRESS REQUIREMENTS
(18)	7W2010	DOUBLE HUNG	AS SHOWN	MEETS EGRESS REQUIREMENTS
(19)	7W2010	DOUBLE HUNG	AS SHOWN	MEETS EGRESS REQUIREMENTS
(20)	7W2010	DOUBLE HUNG	AS SHOWN	MEETS EGRESS REQUIREMENTS
(21)	7W2010	DOUBLE HUNG	AS SHOWN	MEETS EGRESS REQUIREMENTS
(22)	7W2010	DOUBLE HUNG	AS SHOWN	MEETS EGRESS REQUIREMENTS
(23)	7W2010	DOUBLE HUNG	AS SHOWN	MEETS EGRESS REQUIREMENTS
(24)	7W2010	DOUBLE HUNG	AS SHOWN	MEETS EGRESS REQUIREMENTS
(25)	7W2010	DOUBLE HUNG	AS SHOWN	MEETS EGRESS REQUIREMENTS
(26)	7W2010	DOUBLE HUNG	AS SHOWN	MEETS EGRESS REQUIREMENTS
(27)	7W2010	DOUBLE HUNG	AS SHOWN	MEETS EGRESS REQUIREMENTS
(28)	7W2010	DOUBLE HUNG	AS SHOWN	MEETS EGRESS REQUIREMENTS
(29)	7W2010	DOUBLE HUNG	AS SHOWN	MEETS EGRESS REQUIREMENTS
(30)	7W2010	DOUBLE HUNG	AS SHOWN	MEETS EGRESS REQUIREMENTS
(31)	7W2010	DOUBLE HUNG	AS SHOWN	MEETS EGRESS REQUIREMENTS
(32)	7W2010	DOUBLE HUNG	AS SHOWN	MEETS EGRESS REQUIREMENTS
(33)	7W2010	DOUBLE HUNG	AS SHOWN	MEETS EGRESS REQUIREMENTS
(34)	7W2010	DOUBLE HUNG	AS SHOWN	MEETS EGRESS REQUIREMENTS
(35)	7W2010	DOUBLE HUNG	AS SHOWN	MEETS EGRESS REQUIREMENTS
(36)	7W2010	DOUBLE HUNG	AS SHOWN	MEETS EGRESS REQUIREMENTS
(37)	7W2010	DOUBLE HUNG	AS SHOWN	MEETS EGRESS REQUIREMENTS
(38)	7W2010	DOUBLE HUNG	AS SHOWN	MEETS EGRESS REQUIREMENTS
(39)	7W2010	DOUBLE HUNG	AS SHOWN	MEETS EGRESS REQUIREMENTS
(40)	7W2010	DOUBLE HUNG	AS SHOWN	MEETS EGRESS REQUIREMENTS
(41)	7W2010	DOUBLE HUNG	AS SHOWN	MEETS EGRESS REQUIREMENTS
(42)	7W2010	DOUBLE HUNG	AS SHOWN	MEETS EGRESS REQUIREMENTS
(43)	7W2010	DOUBLE HUNG	AS SHOWN	MEETS EGRESS REQUIREMENTS
(44)	7W2010	DOUBLE HUNG	AS SHOWN	MEETS EGRESS REQUIREMENTS
(45)	7W2010	DOUBLE HUNG	AS SHOWN	MEETS EGRESS REQUIREMENTS
(46)	7W2010	DOUBLE HUNG	AS SHOWN	MEETS EGRESS REQUIREMENTS
(47)	7W2010	DOUBLE HUNG	AS SHOWN	MEETS EGRESS REQUIREMENTS
(48)	7W2010	DOUBLE HUNG	AS SHOWN	MEETS EGRESS REQUIREMENTS
(49)	7W2010	DOUBLE HUNG	AS SHOWN	MEETS EGRESS REQUIREMENTS
(50)	7W2010	DOUBLE HUNG	AS SHOWN	MEETS EGRESS REQUIREMENTS
(51)	7W2010	DOUBLE HUNG	AS SHOWN	MEETS EGRESS REQUIREMENTS
(52)	7W2010	DOUBLE HUNG	AS SHOWN	MEETS EGRESS REQUIREMENTS
(53)	7W2010	DOUBLE HUNG	AS SHOWN	MEETS EGRESS REQUIREMENTS
(54)	7W2010	DOUBLE HUNG	AS SHOWN	MEETS EGRESS REQUIREMENTS
(55)	7W2010	DOUBLE HUNG	AS SHOWN	MEETS EGRESS REQUIREMENTS
(56)	7W2010	DOUBLE HUNG	AS SHOWN	MEETS EGRESS REQUIREMENTS
(57)	7W2010	DOUBLE HUNG	AS SHOWN	MEETS EGRESS REQUIREMENTS
(58)	7W2010	DOUBLE HUNG	AS SHOWN	MEETS EGRESS REQUIREMENTS
(59)	7W2010	DOUBLE HUNG	AS SHOWN	MEETS EGRESS REQUIREMENTS
(60)	7W2010	DOUBLE HUNG	AS SHOWN	MEETS EGRESS REQUIREMENTS
(61)	7W2010	DOUBLE HUNG	AS SHOWN	MEETS EGRESS REQUIREMENTS
(62)	7W2010	DOUBLE HUNG	AS SHOWN	MEETS EGRESS REQUIREMENTS
(63)	7W2010	DOUBLE HUNG	AS SHOWN	MEETS EGRESS REQUIREMENTS
(64)	7W2010	DOUBLE HUNG	AS SHOWN	MEETS EGRESS REQUIREMENTS
(65)	7W2010	DOUBLE HUNG	AS SHOWN	MEETS EGRESS REQUIREMENTS
(66)	7W2010	DOUBLE HUNG	AS SHOWN	MEETS EGRESS REQUIREMENTS
(67)	7W2010	DOUBLE HUNG	AS SHOWN	MEETS EGRESS REQUIREMENTS
(68)	7W2010	DOUBLE HUNG	AS SHOWN	MEETS EGRESS REQUIREMENTS
(69)	7W2010	DOUBLE HUNG	AS SHOWN	MEETS EGRESS REQUIREMENTS
(70)	7W2010	DOUBLE HUNG	AS SHOWN	MEETS EGRESS REQUIREMENTS
(71)	7W2010	DOUBLE HUNG	AS SHOWN	MEETS EGRESS REQUIREMENTS
(72)	7W2010	DOUBLE HUNG	AS SHOWN	MEETS EGRESS REQUIREMENTS
(73)	7W2010	DOUBLE HUNG	AS SHOWN	MEETS EGRESS REQUIREMENTS
(74)	7W2010	DOUBLE HUNG	AS SHOWN	MEETS EGRESS REQUIREMENTS
(75)	7W2010	DOUBLE HUNG	AS SHOWN	MEETS EGRESS REQUIREMENTS
(76)	7W2010	DOUBLE HUNG	AS SHOWN	MEETS EGRESS REQUIREMENTS
(77)	7W2010	DOUBLE HUNG	AS SHOWN	MEETS EGRESS REQUIREMENTS
(78)	7W2010	DOUBLE HUNG	AS SHOWN	MEETS EGRESS REQUIREMENTS
(79)	7W2010	DOUBLE HUNG	AS SHOWN	MEETS EGRESS REQUIREMENTS
(80)	7W2010	DOUBLE HUNG	AS SHOWN	MEETS EGRESS REQUIREMENTS
(81)	7W2010	DOUBLE HUNG	AS SHOWN	MEETS EGRESS REQUIREMENTS
(82)	7W2010	DOUBLE HUNG	AS SHOWN	MEETS EGRESS REQUIREMENTS
(83)	7W2010	DOUBLE HUNG	AS SHOWN	MEETS EGRESS REQUIREMENTS
(84)	7W2010	DOUBLE HUNG	AS SHOWN	MEETS EGRESS REQUIREMENTS
(85)	7W2010	DOUBLE HUNG	AS SHOWN	MEETS EGRESS REQUIREMENTS
(86)	7W2010	DOUBLE HUNG	AS SHOWN	MEETS EGRESS REQUIREMENTS
(87)	7W2010	DOUBLE HUNG	AS SHOWN	MEETS EGRESS REQUIREMENTS
(88)	7W2010	DOUBLE HUNG	AS SHOWN	MEETS EGRESS REQUIREMENTS
(89)	7W2010	DOUBLE HUNG	AS SHOWN	MEETS EGRESS REQUIREMENTS
(90)	7W2010	DOUBLE HUNG	AS SHOWN	MEETS EGRESS REQUIREMENTS
(91)	7W2010	DOUBLE HUNG	AS SHOWN	MEETS EGRESS REQUIREMENTS
(92)	7W2010	DOUBLE HUNG	AS SHOWN	MEETS EGRESS REQUIREMENTS
(93)	7W2010	DOUBLE HUNG	AS SHOWN	MEETS EGRESS REQUIREMENTS
(94)	7W2010	DOUBLE HUNG	AS SHOWN	MEETS EGRESS REQUIREMENTS
(95)	7W2010	DOUBLE HUNG	AS SHOWN	MEETS EGRESS REQUIREMENTS
(96)	7W2010	DOUBLE HUNG	AS SHOWN	MEETS EGRESS REQUIREMENTS
(97)	7W2010	DOUBLE HUNG	AS SHOWN	MEETS EGRESS REQUIREMENTS
(98)	7W2010	DOUBLE HUNG	AS SHOWN	MEETS EGRESS REQUIREMENTS
(99)	7W2010	DOUBLE HUNG	AS SHOWN	MEETS EGRESS REQUIREMENTS
(100)	7W2010	DOUBLE HUNG	AS SHOWN	MEETS EGRESS REQUIREMENTS

GENERAL NOTES:

- All work shall be in accordance with IRC 2009, IBC 2009, NFPA-70 National Electric Code, Maine State Plumbing Code, ASHRAE, U.L., NFPA Codes and all local, State and Federal requirements.
- All applicable Federal, State and Municipal regulations shall be followed, including the Federal Department of Labor Occupational Safety and Health act.
- All required City and State permits must be obtained before any construction begins.
- It is the contractor's sole responsibility to determine erection procedures and sequence to ensure the safety of the people working on the building and its components during erection. This includes the addition of necessary shoring, sheeting, temporary bracing, guys or tie-downs. Such material shall remain the property of the contractor after completion of the project.
- Structural, Mechanical, Electrical and Plumbing design and installation by others shall be performed in accordance with local, State and Federal standards.
- All fire ratings indicated shall be continuous to underside of fire rated ceiling or underside of roof deck, seal all openings & mechanical penetrations with approved fire rating material.
- Building shall have approved smoke detectors in accordance with NFPA-101 Life Safety Code. Smoke detectors shall initiate alarm that is audible in the sleeping rooms of each unit as approved by authorities having jurisdiction.
- Portable fire extinguishers shall be provided in all hazardous areas in accordance to NFPA-101. Local authority having jurisdiction needs to provide written requirements.
- Balconies must maintain a 42" guardrail height and shall be kept free and clear of ice and snow at all times to ensure the second means of egress.
- HVAC installation to be in accordance with ASHRAE, NFPA-99A, OR NFPA-90B and all Federal, local and State codes. Ventilation or heat equipment shall be in accordance with NFPA-91, NFPA-211, NFPA-21, NFPA-211 and NFPA-91 as applicable.
- HVAC & Electrical design to be design build by contractor.
- Building to have an approved 132i sprinkler system conforming with NFPA codes.



NAPPI RESIDENCE

16 MORNING STREET
 PORTLAND, MAINE

REVISIONS:
 DLP 1 05/16/17 REMOVE # FROM GARAGE
 DLP 10/05/16
 DATE: 10/05/16
 ISSUED:

FLOOR PLANS
 WINDOW SCHEDULE

A1

SCALE: AS NOTED