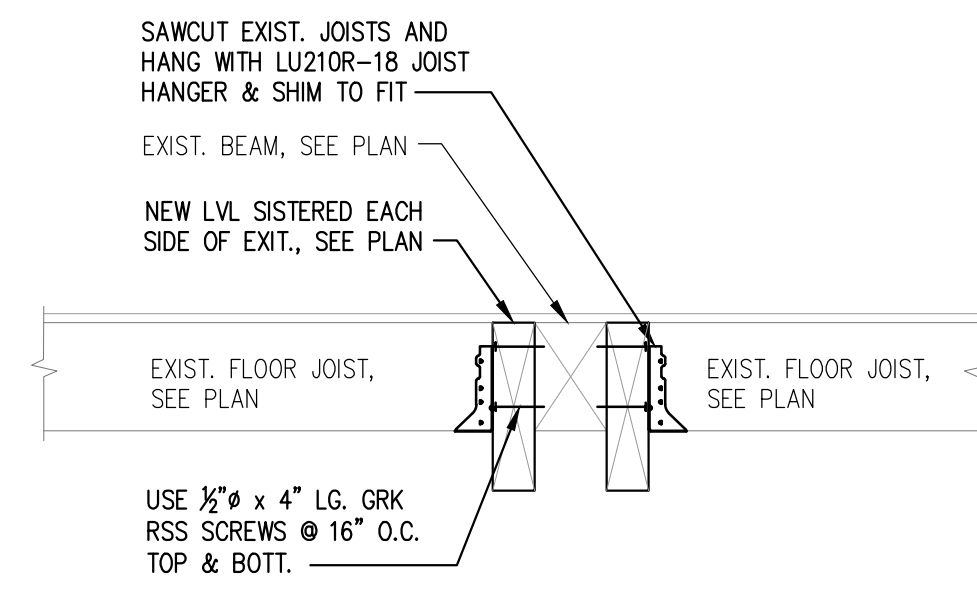
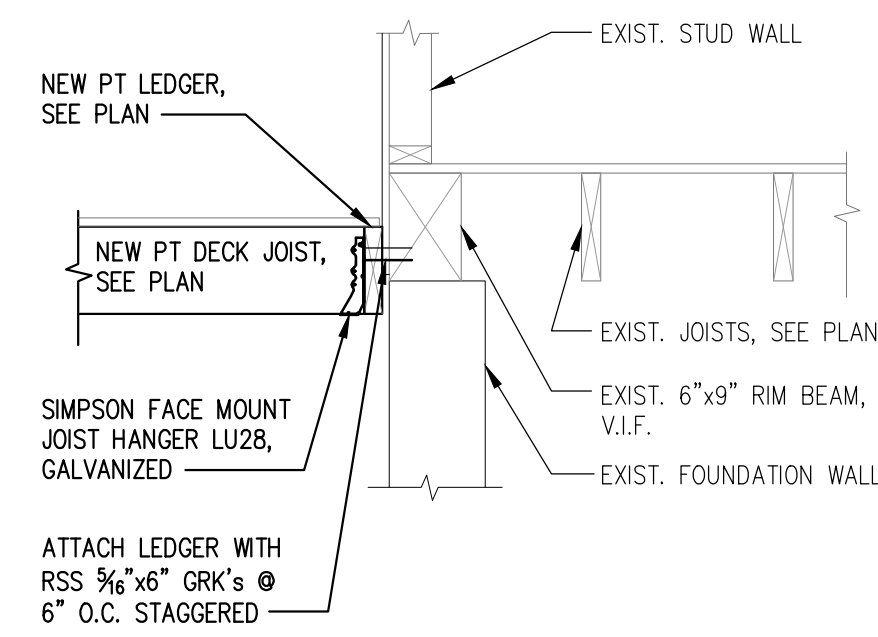


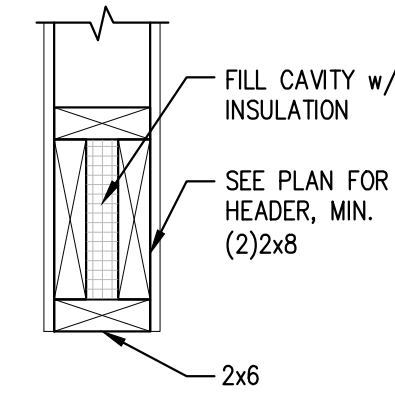
PRINTED: Oct 03, 2017



1 SISTER TO EXIST. BEAM SECTION 3/4" = 1'-0"

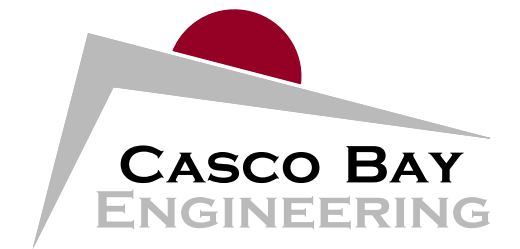


2 DECK ATTACHMENT SECTION 3/4" = 1'-0"



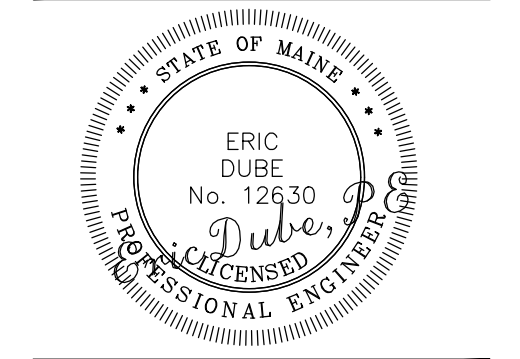
NOTE:
 1. PROVIDE (2) FULL HEIGHT KING STUDS ON EACH SIDE OF OPENING TO MATCH 1/2 OF INTERRUPTED STUDS @ WALL OPENING. MINIMUM (2) FULL HEIGHT KING STUDS @ EACH SIDE OF OPENING.
 2. ALL HEADERS SUPPORTED BY MINIMUM OF (1) JACK STUD.
 3. WINDOW SILL PLATES MINIMUM (2)-2x6 ON THE FLAT.

3 TYPICAL WINDOW HEADER DETAIL N.T.S.



424 Fore Street
 Portland, ME 04101
 Phone 207.842.2800
 Fax 207.842.2828
www.cascobayengineering.com

CLIENT:
DAVID MATERO
ARCHITECTURE
 100 FRONT STREET, SUITE 40
 BATH, MAINE 04530



MCMANN CONDO
 26 MOODY STREET, PORTLAND MAINE
RESIDENTIAL RENNOVATION

No.	DESCRIPTION	ISSUED		DR.		CHK.		DATE	
		BY	ED	BY	ED	BY	ED		
A	ISSUE FOR REVIEW								7-31-17
B	FOR PERMIT ONLY								8-1-17
0	ISSUE FOR CONSTRUCTION								10-3-17

SHEET TITLE:

FRAMING DETAILS

DESIGNED: SD
 DRAWN: SD
 DATE: 10-3-2017
 PROJECT NUMBER: 17-090

S3.0