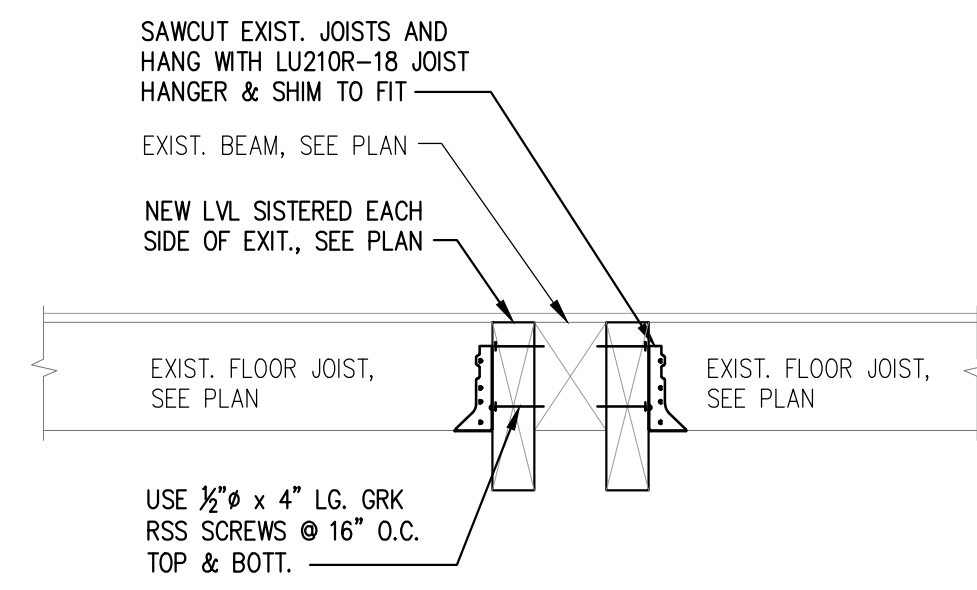
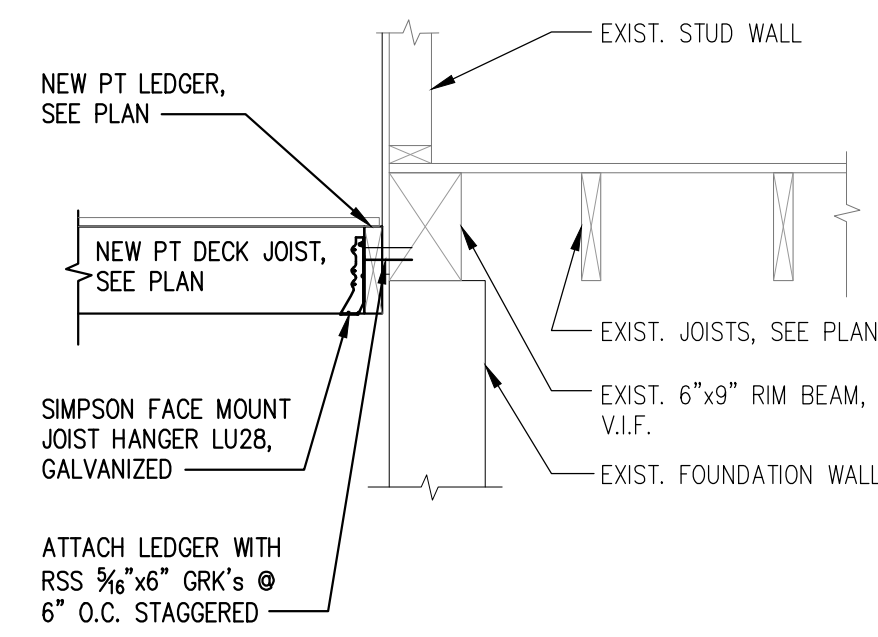


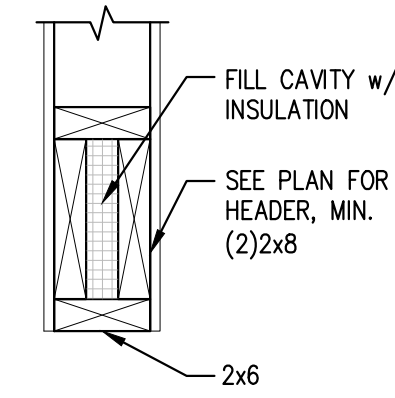
PRINTED: Aug 01, 2017



1 SISTER TO EXIST. BEAM SECTION 3/4" = 1'-0"

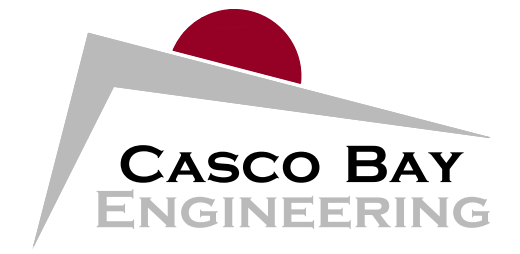


2 DECK ATTACHMENT SECTION 3/4" = 1'-0"



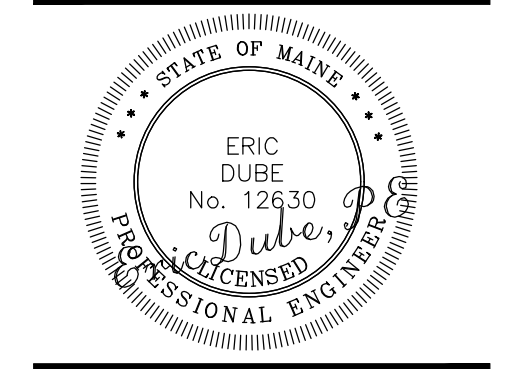
NOTE:
 1. PROVIDE (2) FULL HEIGHT KING STUDS ON EACH SIDE OF OPENING TO MATCH 1/2 OF INTERRUPTED STUDS @ WALL OPENING. MINIMUM (2) FULL HEIGHT KING STUDS @ EACH SIDE OF OPENING.
 2. ALL HEADERS SUPPORTED BY MINIMUM OF (1) JACK STUD.
 3. WINDOW SILL PLATES MINIMUM (2)-2x6 ON THE FLAT.

3 TYPICAL WINDOW HEADER DETAIL N.T.S.



424 Fore Street
 Portland, ME 04101
 Phone 207.842.2800
 Fax 207.842.2828
www.cascobayengineering.com

CLIENT:
DAVID MATERO
ARCHITECTURE
 100 FRONT STREET, SUITE 40
 BATH, MAINE 04530



MCMANN CONDO
 26 MOODY STREET, PORTLAND MAINE
RESIDENTIAL RENNOVATION

| No. | DESCRIPTION | ISSUED FOR REVIEW | ISSUED FOR PERMIT ONLY | DR | CKD | DATE |
|-----|-------------|-------------------|------------------------|----|-----|---------|
| | | | | BY | BY | |
| A | | | | SD | ED | 7-31-17 |
| B | | | | SD | TD | 8-1-17 |
| | | | | | | |
| | | | | | | |
| | | | | | | |
| | | | | | | |
| | | | | | | |
| | | | | | | |
| | | | | | | |

SHEET TITLE:

FRAMING DETAILS

DESIGNED: SD
 DRAWN: SD
 DATE: 7-31-2017
 PROJECT NUMBER: 17-090

S3.0