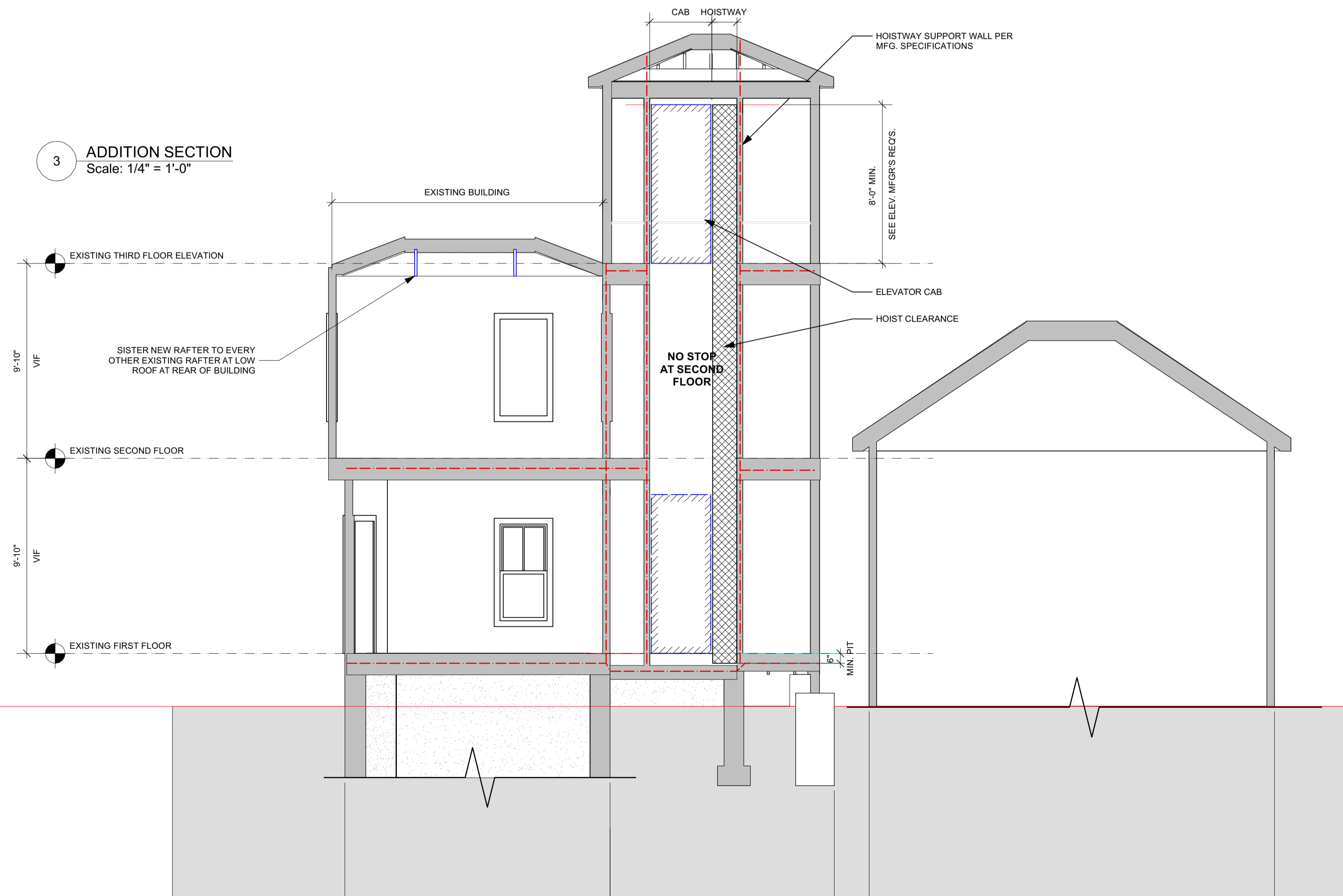




Door Schedule												
Mark	Nominal Size			Door Operation	Fire Rating in Minutes			Door Data				
	Width	Height	Thickness		Slab Style	Frame	Door Slab	Mr	Model No.	Accessories	Comments	
EX-101.2	3'0"	6'8"	1 3/4"	Swing Simple	Solid		60	60				SELF-CLOSING
EX-101.3	2'8"	6'8"	1 3/4"	Swing Simple	Solid		60	60				EXISTING RATED DOOR TO REMAIN
EX-101.3	3'0"	6'8"	1 3/8"	Swing Simple	Panel							
EX-101.4	2'4"	6'8"	1 3/8"	Swing Simple	Solid							
EX-102.1	2'6"	6'8"	1 3/4"	Swing Simple	Glass						INSULATED GLASS	NEW DOOR AT EXISTING WINDOW OPENING
EX-103.1	3'0"	6'8"	1 3/4"	Swing Simple	Solid		60	60				EXISTING RATED DOOR TO REMAIN
EX-104.1	3'0"	6'8 3/4"	1 3/4"	Swing Simple	Glass						INSULATED GLASS	EXISTING RATED DOOR TO REMAIN
EX-201.1	2'6"	6'8"	1 3/4"	Swing Simple	Glass						INSULATED GLASS	NEW DOOR AT EXISTING WINDOW OPENING
EX-202.1	2'6"	6'8"	1 3/4"	Swing Simple	Solid		60	60				SELF-CLOSING
EX-203.1	3'0"	6'8"	1 3/4"	Swing Simple	Solid		60	60				SELF-CLOSING
EX-203.2	3'0"	6'8"	1 3/8"	Swing Simple	Solid							
EX-204.1	2'8"	6'8"	1 3/8"	Swing Simple	Solid		60	60				EXISTING RATED DOOR TO REMAIN
EX-301.1	2'8"	6'8"	1 3/4"	Swing Simple	Glass						INSULATED GLASS	NEW DOOR AT EXISTING WINDOW OPENING
EX-302.1	3'0"	6'8"	1 3/4"	Swing Simple	Solid		60	60				SELF-CLOSING
EX-302.2	3'0"	6'8 3/4"	1 3/8"	Swing Simple	Panel							
EX-303.1	2'8"	6'8"	1 3/8"	Swing Simple	Panel							
EX-303.2	2'6"	6'8"	1 3/8"	Pocket Simple	Panel							
EX-304.1	2'6"	6'8"	1 3/4"	Swing Simple	Solid		60	60				SELF-CLOSING
EX-305.1	2'8"	6'8"	1 3/8"	Swing Simple	Panel							
EX-305.2	2'6"	6'8"	1 3/8"	Swing Simple	Panel							
EX-306.1	2'6"	6'8"	1 3/8"	Pocket Simple	Panel							
EX-307.1	2'6"	6'8"	1 3/8"	Pocket Simple	Panel							
EX-307.2	2'0"	6'8"	1 3/8"	Swing Simple	Panel							
EX-308.1	2'4"	6'8"	1 3/8"	Swing Simple	Panel							
EX-309.1	2'8"	6'8"	1 3/8"	Swing Simple	Panel							
EX-309.2	2'6"	6'8"	1 3/8"	Swing Simple	Panel							
EX-309.3	2'6"	6'8"	1 3/8"	Swing Simple	Panel							
EX-309.4	2'6"	6'8"	1 3/8"	Pocket Simple	Panel							

Window Schedule with Images												
Image	Mark	Nominal Size		Sash Operation	Glass	Egress Win	Opening		Window Data			
		O.A. Width	O.A. Height				R/O Width	R/O Height	Mr	Model No.	Comments	
	A	25 5/8"	49"	Double Hung		FALSE	26 1/8"	49 1/2"		ANDERSEN - WOODRIGHT SERIES	TV2446	
	B	15"	24 3/8"	Casement	TEMPERED	FALSE	15 1/2"	24 7/8"		ANDERSEN	CR 125	

3 ADDITION SECTION
 Scale: 1/4" = 1'-0"



2 ELEVATOR HOISTWAY SECTION
 Scale: 1/4" = 1'-0"

PERMIT SET

 RESIDENTIAL DESIGN STUDIO	 CAROL A. MORRISSETTE STATE OF MAINE	 SRG ENGINEERING, INC. STRUCTURAL ENGINEERS	Design Firm RESIDENTIAL DESIGN STUDIO, LLC Carol A. Morrisette 21 Chestnut Street, Suite 506 Portland, Maine 04101 T 207.699.4184 C 207.671.7965	Project Title SHEA & DEUTSCH 86 MORNING STREET PORTLAND, MAINE	Sheet Status PERMIT SET	
			Revisions 1 2 3	Sheet Title SECTIONS & SCHEDULES	Project Number 15-60	Date 13 MARCH 2017
					Drawn by AC/CM	Sheet No. A3.1