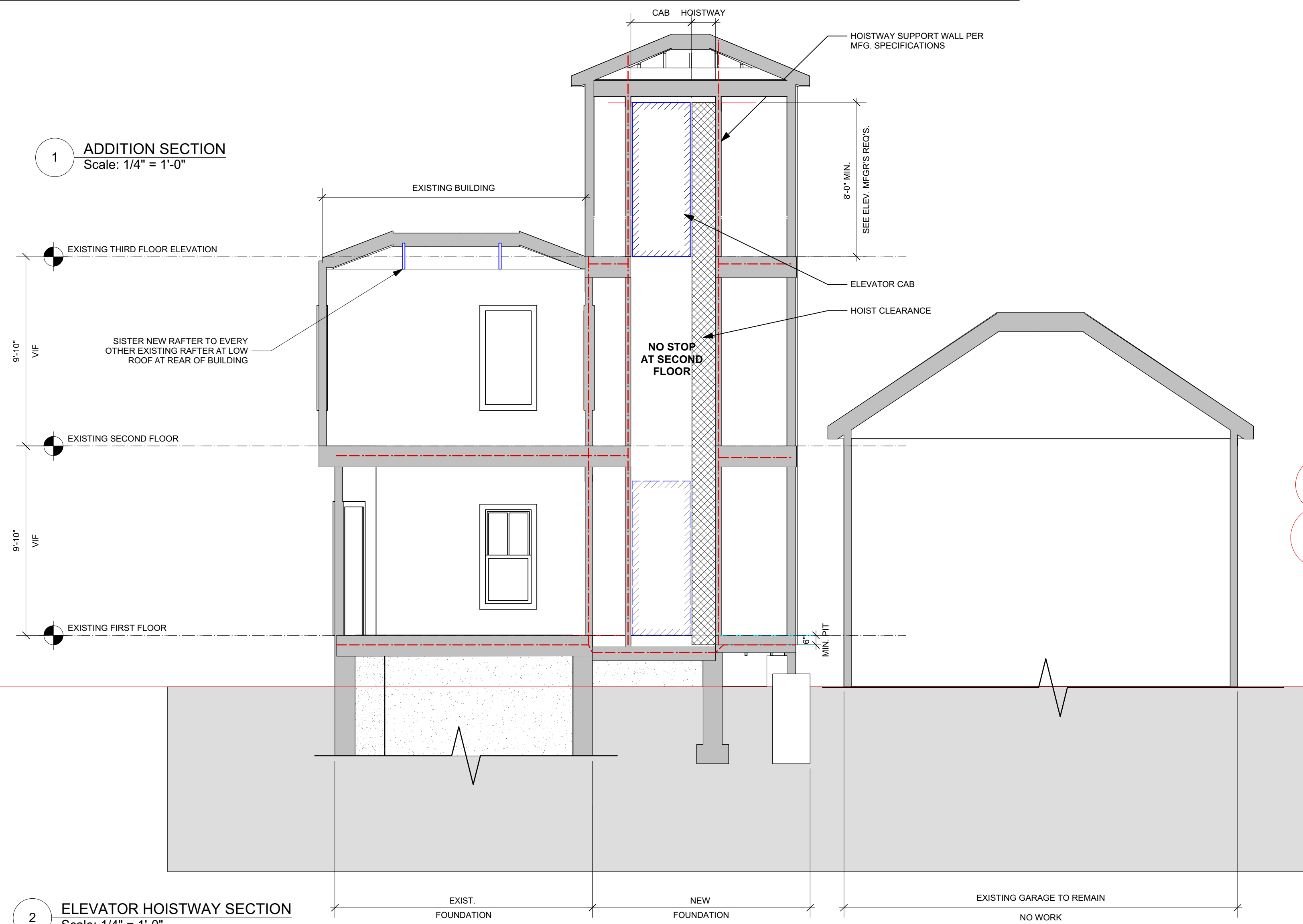




Door Schedule											
Mark	Nominal Size			Door Operation	Fire Rating in Minutes			Door Data			
	Width	Height	Thickness		Slab Style	Frame	Door Slab	Mfr	Model No.	Accessories	Comments
EX. 101.2	3'0"	6'8"	1 3/4"	Swing Simple	Solid	60	60				SELF-CLOSING
EX. 101.3	2'8"	6'8"	1 3/4"	Swing Simple	Solid	60	60				EXISTING RATED DOOR TO REMAIN
EX. 101.4	2'4"	6'8"	1 3/8"	Swing Simple	Panel						
EX. 102.1	2'6"	6'8"	1 3/4"	Swing Simple	Glass	60	60	EXISTING DOOR			REPLACE DOOR & FRAME AS REQ'D TO MEET 1 HR RATING
EX. 103.1	3'0"	6'8"	1 3/4"	Swing Simple	Solid	60	60				NEW DOOR AT EXISTING WINDOW OPENING
EX. 103.2	3'0"	6'8"	1 3/4"	Swing Simple	Solid	60	60				EXISTING RATED DOOR TO REMAIN
EX. 104.1	3'0"	6'8 3/4"	1 3/4"	Swing Simple	Glass						INSULATED GLASS
201.1	2'0"	6'8"	1 3/4"	Swing Simple	Glass						INSULATED GLASS
202.1	2'8"	6'8"	1 3/4"	Swing Simple	Solid	60	60				NEW DOOR AT EXISTING WINDOW OPENING
203.1	3'0"	6'8"	1 3/4"	Swing Simple	Solid	60	60				SELF-CLOSING
203.2	3'0"	6'8"	1 3/8"	Swing Simple	Solid						SELF-CLOSING
EX. 203.2	3'0"	6'8"	1 3/4"	Swing Simple	Solid	60	60				EXISTING RATED DOOR TO REMAIN
EX. 204.1	2'8"	6'8"	1 3/8"	Swing Simple	Solid						EXISTING RATED DOOR TO REMAIN
EX. 204.1	2'8"	6'8"	1 3/4"	Swing Simple	Solid	60	60				EXISTING RATED DOOR TO REMAIN
EX. 301.1	2'8"	6'8"	1 3/4"	Swing Simple	Glass						INSULATED GLASS
EX. 302.1	3'0"	6'8"	1 3/4"	Swing Simple	Solid	60	60				NEW DOOR AT EXISTING WINDOW OPENING
EX. 302.2	3'0"	6'8 3/4"	1 3/8"	Swing Simple	Panel						SELF-CLOSING
EX. 303.1	2'8"	6'8"	1 3/8"	Swing Simple	Panel						SELF-CLOSING
EX. 303.2	2'6"	6'8"	1 3/8"	Pocket Simple	Panel						SELF-CLOSING
EX. 304.1	2'6"	6'8"	1 3/4"	Swing Simple	Solid	60	60				SELF-CLOSING
EX. 305.1	2'8"	6'8"	1 3/8"	Swing Simple	Panel						SELF-CLOSING
EX. 305.2	2'6"	6'8"	1 3/8"	Swing Simple	Panel						SELF-CLOSING
EX. 306.1	2'6"	6'8"	1 3/8"	Pocket Simple	Panel						SELF-CLOSING
EX. 307.1	2'6"	6'8"	1 3/8"	Pocket Simple	Panel						SELF-CLOSING
EX. 307.2	2'0"	6'8"	1 3/8"	Swing Simple	Panel						SELF-CLOSING
EX. 308.1	2'4"	6'8"	1 3/8"	Swing Simple	Panel						SELF-CLOSING
EX. 309.1	2'8"	6'8"	1 3/8"	Swing Simple	Panel						SELF-CLOSING
EX. 309.2	2'6"	6'8"	1 3/8"	Swing Simple	Panel						SELF-CLOSING
EX. 309.3	2'6"	6'8"	1 3/8"	Swing Simple	Panel						SELF-CLOSING
EX. 309.4	2'6"	6'8"	1 3/8"	Pocket Simple	Panel						SELF-CLOSING

Window Schedule with Images											
Image	Mark	Nominal Size		Sash Operation	Glass	Egress Win	Opening		Window Data		
		O.A. Width	O.A. Height				RD Width	RD Height	Mfr	Model No.	Comments
	A	25 5/8"	4'0"	Double Hung		FALSE	26 1/8"	4'0 1/2"	ANDERSEN WOODWRIGHT SERIES	TW 2446	
	B	1'0"	24 3/8"	Casement	TEMPERED	FALSE	1'5 1/2"	24 7/8"	ANDERSEN	CR 125	
	C	2'4"	5'0"	Double Hung	TEMPERED	FALSE	24 1/2"	5'0 1/2"	ANDERSEN WOODWRIGHT HT SERIES	REPLACEMENT	INSERT/REPLACEMENT WINDOW

1 ADDITION SECTION
Scale: 1/4" = 1'-0"



2 ELEVATOR HOISTWAY SECTION
Scale: 1/4" = 1'-0"

NOTE: EXISTING GARAGE TO BE DEMOLISHED UNDER SEPARATE DEMOLITION PERMIT

PERMIT SET

	Design Firm RESIDENTIAL DESIGN STUDIO, LLC Carol A. Morrisette 21 Chestnut Street, Suite 306 Portland, Maine 04101 T 207.699.4184 C 207.671.7965	Project Title SHEA & DEUTSCH 86 MORNING STREET PORTLAND, MAINE	Sheet Status PROGRESS SET	
		Revisions 1 5/10/17 - CODE REDLINES 2 3	Project Number 16.60	Date 15 APRIL 2017
	Drawn By AC/CM	Sheet Title SECTIONS & SCHEDULES	Sheet Scale 1/4" = 1'-0"	Sheet No. A3.1