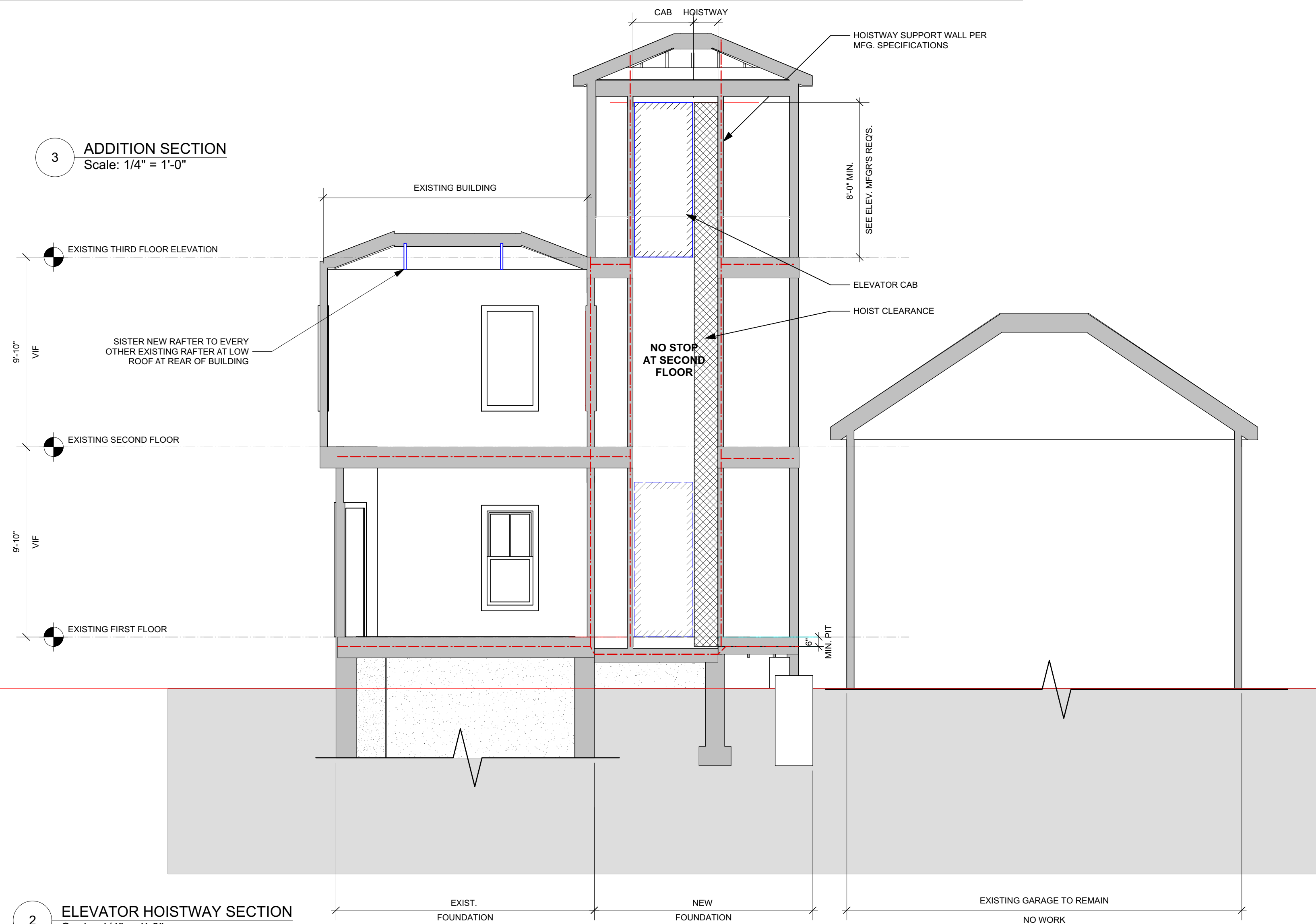




Door Schedule												
Mark	Nominal Size			Door Operation	Fire Rating in Minutes			Door Data				
	Width	Height	Thickness		Slab Style	Frame	Door Slab	Mfr	Model No.	Accessories	Comments	
EX-101.2	3'0"	6'8"	1 3/4"	Swing Simple	Solid		60	60				SELF-CLOSING
EX-101.3	2'8"	6'8"	1 3/4"	Swing Simple	Solid		60	60				EXISTING RATED DOOR TO REMAIN
101.3	3'0"	6'8"	1 3/8"	Swing Simple	Panel							
101.4	2'4"	6'8"	1 3/8"	Swing Simple	Solid							
EX-102.1	2'6"	6'8"	1 3/4"	Swing Simple	Glass						INSULATED GLASS	NEW DOOR AT EXISTING WINDOW OPENING
EX-103.1	3'0"	6'8"	1 3/4"	Swing Simple	Solid		60	60				EXISTING RATED DOOR TO REMAIN
EX-103.2	3'0"	6'8"	1 3/4"	Swing Simple	Solid		60	60				EXISTING RATED DOOR TO REMAIN
104.1	3'0"	6'8 3/4"	1 3/4"	Swing Simple	Glass						INSULATED GLASS	NEW DOOR AT EXISTING WINDOW OPENING
201.1	2'6"	6'8"	1 3/4"	Swing Simple	Glass						INSULATED GLASS	NEW DOOR AT EXISTING WINDOW OPENING
202.1	2'6"	6'8"	1 3/4"	Swing Simple	Solid		60	60				SELF-CLOSING
203.1	3'0"	6'8"	1 3/4"	Swing Simple	Solid		60	60				SELF-CLOSING
203.2	3'0"	6'8"	1 3/8"	Swing Simple	Solid							
EX-203.2	3'0"	6'8"	1 3/4"	Swing Simple	Solid		60	60				EXISTING RATED DOOR TO REMAIN
EX-204.1	2'8"	6'8"	1 3/8"	Swing Simple	Solid							
EX-204.1	2'8"	6'8"	1 3/4"	Swing Simple	Solid		60	60				EXISTING RATED DOOR TO REMAIN
EX-204.1	2'8"	6'8"	1 3/4"	Swing Simple	Glass						INSULATED GLASS	NEW DOOR AT EXISTING WINDOW OPENING
302.1	3'0"	6'8"	1 3/4"	Swing Simple	Solid		60	60				SELF-CLOSING
302.2	3'0"	6'8 3/4"	1 3/8"	Swing Simple	Panel							
303.1	2'6"	6'8"	1 3/8"	Swing Simple	Panel							
303.2	2'6"	6'8"	1 3/8"	Pocket Simple	Panel							
304.1	2'6"	6'8"	1 3/4"	Swing Simple	Solid		60	60				SELF-CLOSING
305.1	2'8"	6'8"	1 3/8"	Swing Simple	Panel							
305.2	2'6"	6'8"	1 3/8"	Swing Simple	Panel							
306.1	2'6"	6'8"	1 3/8"	Pocket Simple	Panel							
307.1	2'6"	6'8"	1 3/8"	Pocket Simple	Panel							
307.2	2'0"	6'8"	1 3/8"	Swing Simple	Panel							
308.1	2'4"	6'8"	1 3/8"	Swing Simple	Panel							
309.1	2'8"	6'8"	1 3/8"	Swing Simple	Panel							
309.2	2'6"	6'8"	1 3/8"	Swing Simple	Panel							
309.3	2'6"	6'8"	1 3/8"	Swing Simple	Panel							
309.4	2'6"	6'8"	1 3/8"	Pocket Simple	Panel							

Window Schedule with Images											
Image	Mark	Nominal Size		Slab Operation	Glass	Egress Win	Opening		Window Data		
		O.A. Width	O.A. Height				RD Width	RD Height	Mfr	Model No.	Comments
	A	25 5/8"	49"	Double Hung		FALSE	26 1/8"	49 1/2"	ANDERSEN - WOODWRIGHT SERIES	TW 2466	
	B	15"	24 3/8"	Casement	TEMPERED	FALSE	15 1/2"	24 7/8"	ANDERSEN	CR 125	

3 ADDITION SECTION
Scale: 1/4" = 1'-0"



2 ELEVATOR HOISTWAY SECTION
Scale: 1/4" = 1'-0"

PERMIT SET

			Design Firm	RESIDENTIAL DESIGN STUDIO, LLC Carol A. Morrissette 21 Chestnut Street, Suite 506 Portland, Maine 04101 T: 207.699.4154 F: 207.671.7965	Project Title	SHEA & DEUTSCH 86 MORNING STREET PORTLAND, MAINE	Sheet Status	PERMIT SET	Date	13 MARCH 2017
			Drawn By	AC/CM	Sheet Scale	1/4" = 1'-0"	Sheet No.	A3.1		
			Revisions	1 2 3	Sheet Title	SECTIONS & SCHEDULES	CAD File Number			