

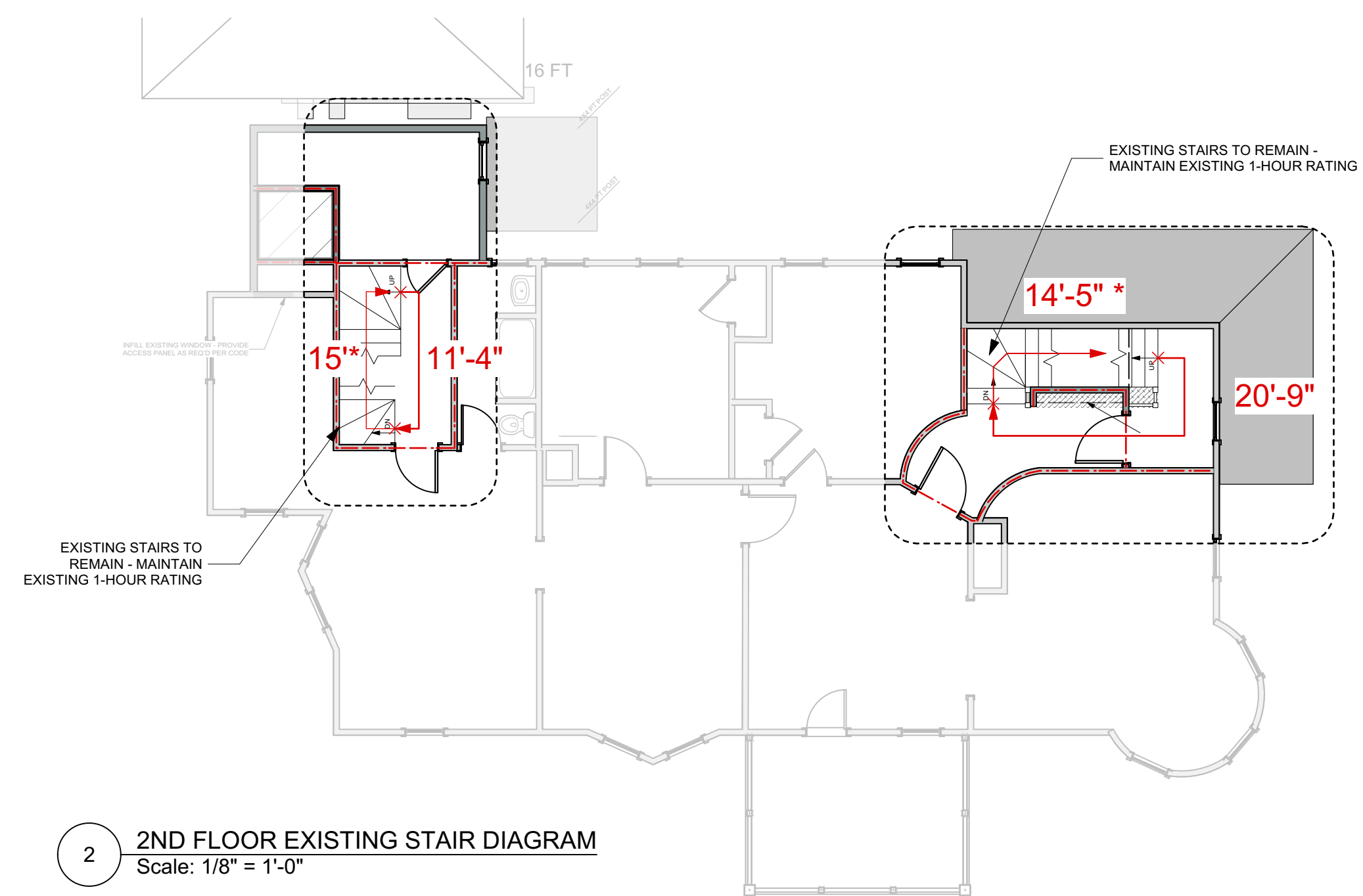
3 3RD FLOOR EXISTING STAIR DIAGRAM
Scale: 1/8" = 1'-0"

* LENGTH OF TRAVEL INCLUDES VERTICAL TRAVEL ON STAIRS

MAX. PATH OF TRAVEL WITHIN DWELLING UNIT IS 48' REQ'D: LESS THAN 75'

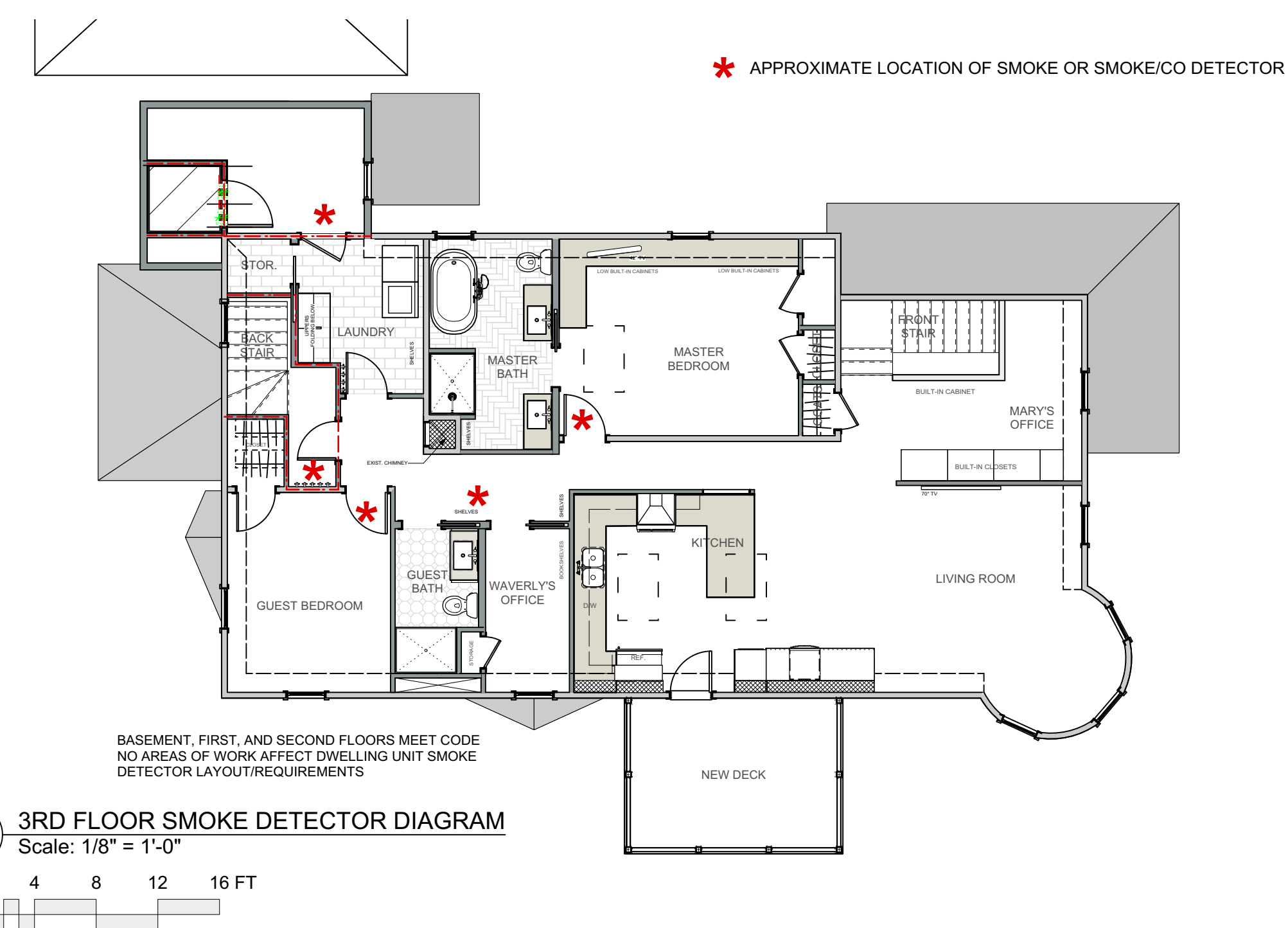
EGRESS WINDOW NOTE:

EXISTING WINDOWS IN SLEEPING ROOMS MEET THE MINIMUM 20" IN WIDTH AND 24" IN HEIGHT CLEAR OPENING, PER STATE FIRE MARSHALL'S LETTER DATED OCTOBER 17, 2013



2 2ND FLOOR EXISTING STAIR DIAGRAM
Scale: 1/8" = 1'-0"

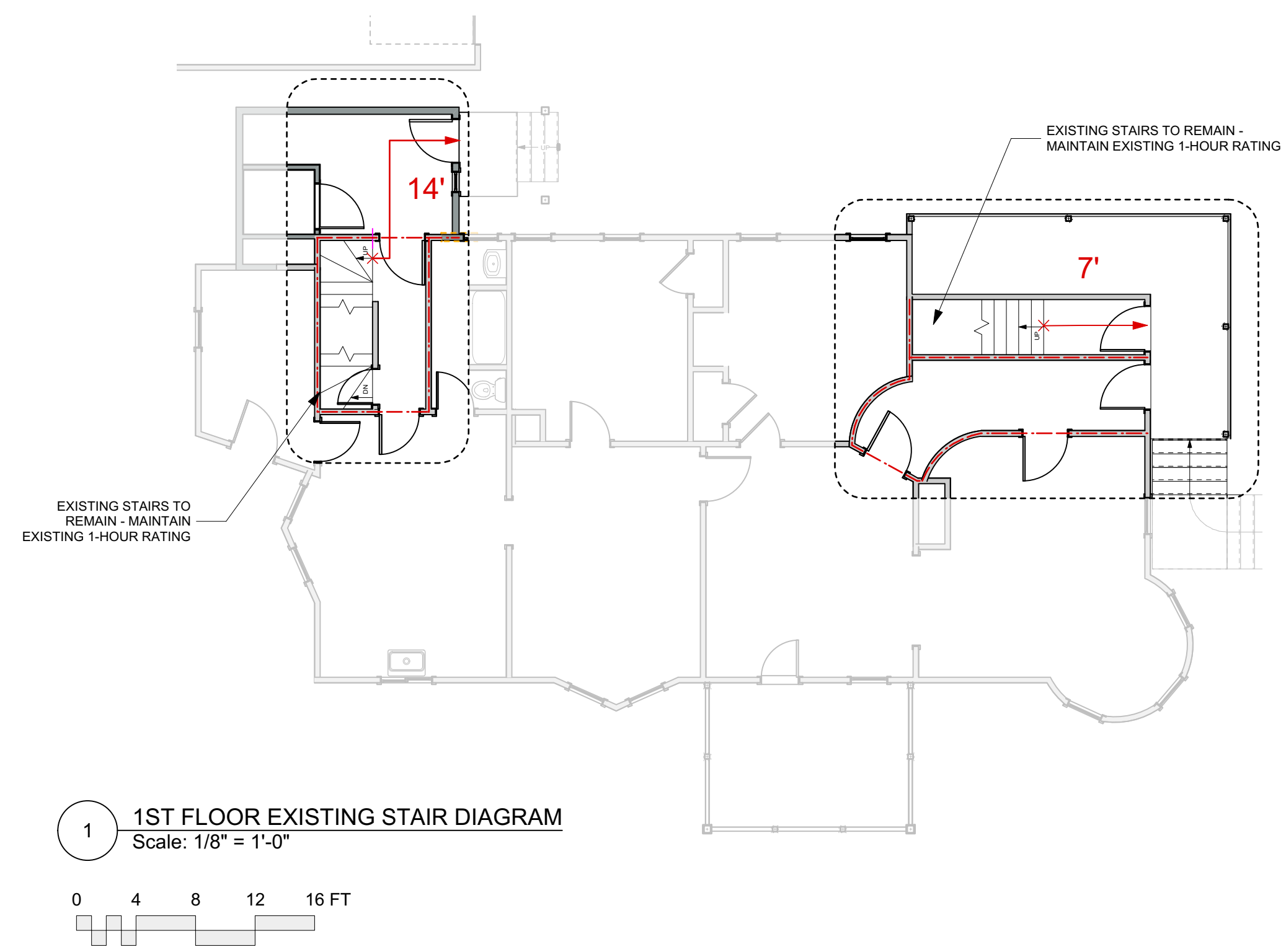
* LENGTH OF TRAVEL INCLUDES VERTICAL TRAVEL ON STAIRS



4 3RD FLOOR SMOKE DETECTOR DIAGRAM
Scale: 1/8" = 1'-0"

* LENGTH OF TRAVEL INCLUDES VERTICAL TRAVEL ON STAIRS

MAX. PATH OF TRAVEL FROM WITHIN 3RD FLOOR DWELLING UNIT TO EXTERIOR (INCLUDING VERTICAL TRAVEL ON STAIRS) IS 94'-4" AT WORST CASE SCENARIO REQ'D: LESS THAN 200'



1 1ST FLOOR EXISTING STAIR DIAGRAM
Scale: 1/8" = 1'-0"

PERMIT SET

			Design Firm RESIDENTIAL DESIGN STUDIO, LLC Carol A. Morrissette 21 Chestnut Street, Suite 506 Portland, Maine 04101 T 207.699.4184 C 207.671.7965	Project Title SHEA & DEUTSCH 86 MORNING STREET PORTLAND, MAINE	Sheet Status PERMIT SET
			Revisions 1 2 3	Sheet Title LIFE SAFETY	Project Number 16.60
			Drawn By AC/CM	Sheet Scale AS NOTED	Sheet No. A0.3
			CAD File Number		