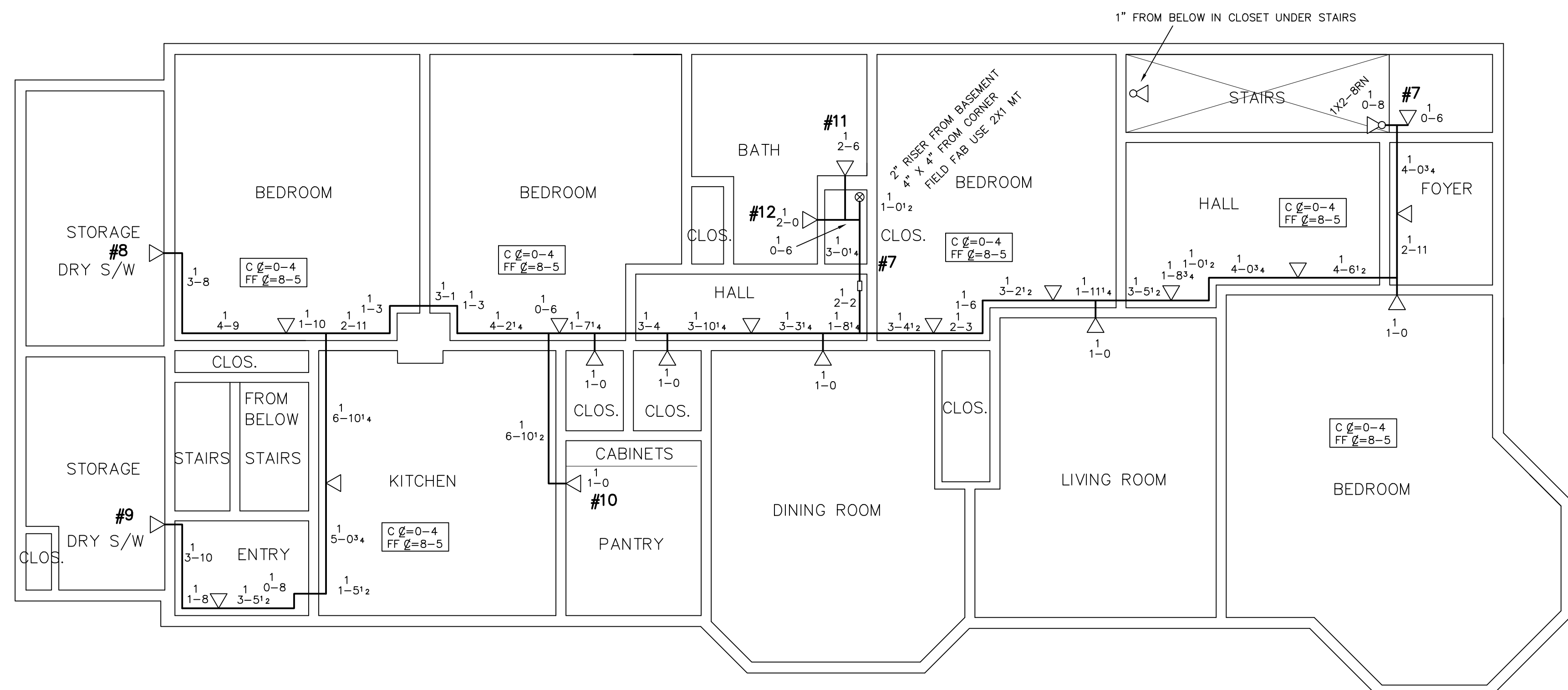
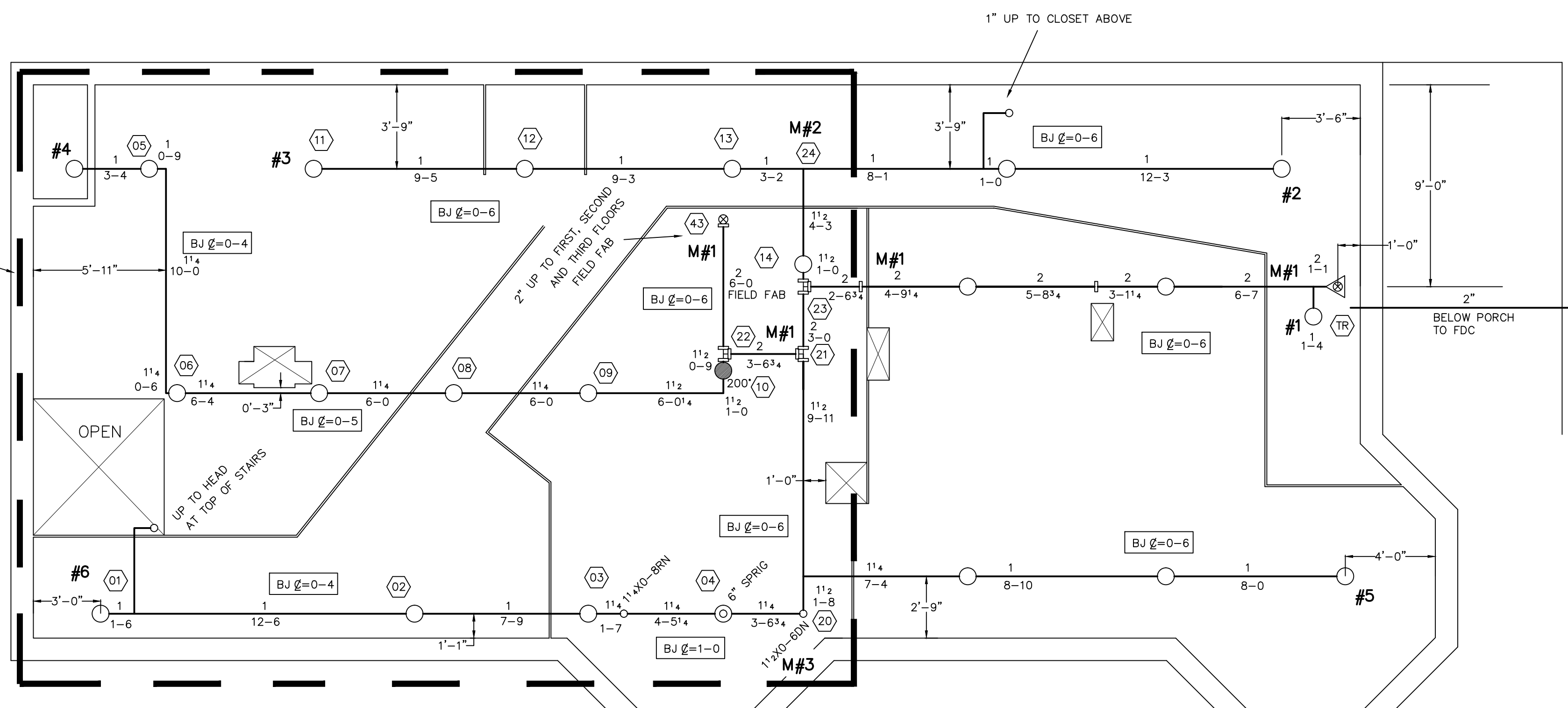


SECOND FLOOR

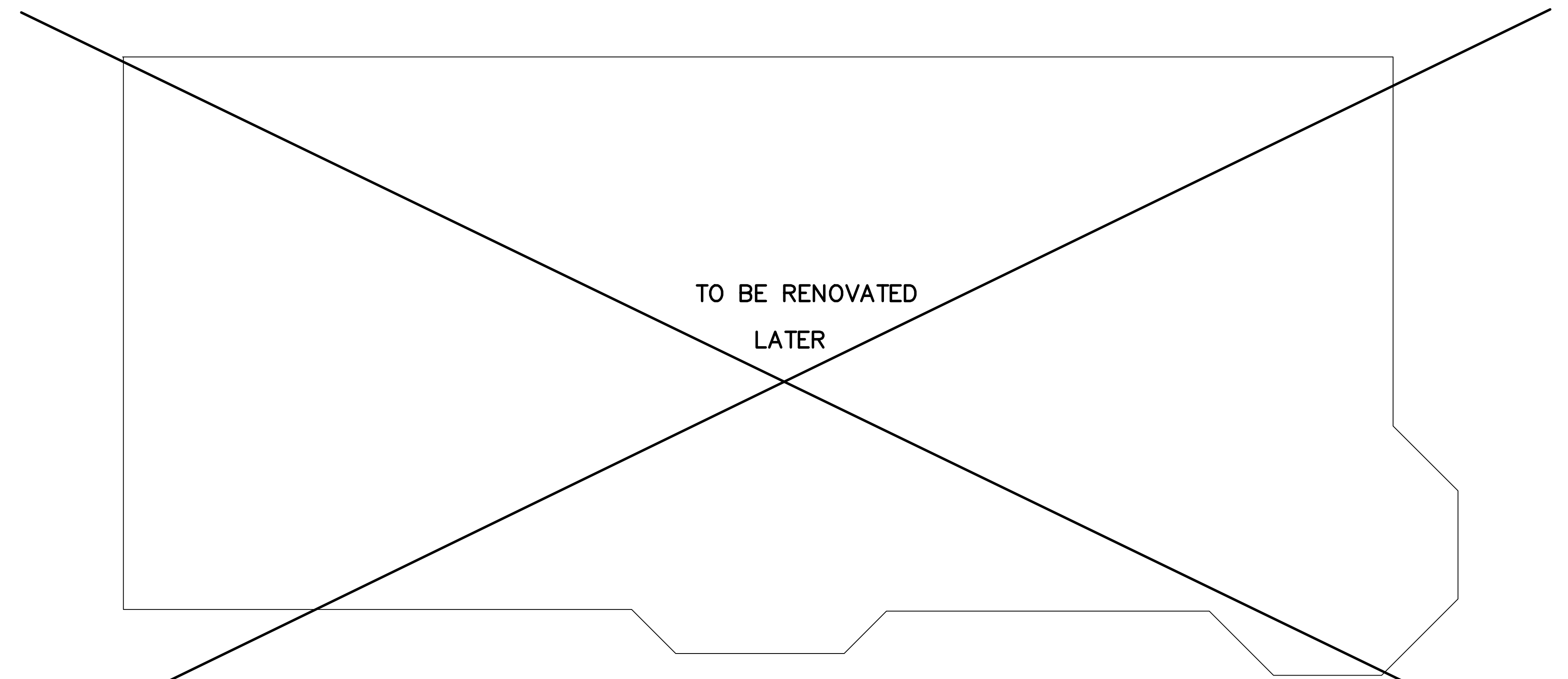


FIRST FLOOR

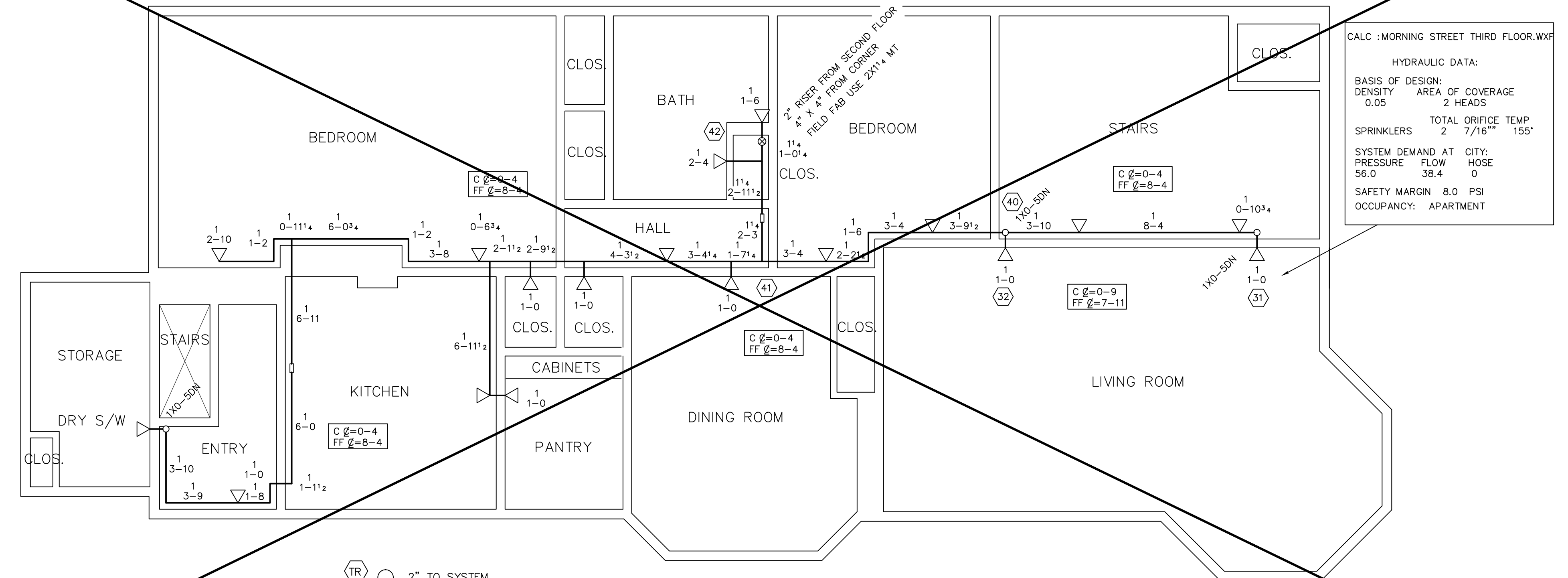
CALC -MORNING STREET BASEMENT.WVF
HYDRAULIC DATA:
BASIS OF DESIGN:
DENSITY AREA OF COVERAGE
0.15 900 SQ FT
SPRINKLERS TOTAL ORIFICE TEMP
14 1/2" 155'
SYSTEM DEMAND AT CITY:
PRESSURE FLOW HOSE
54.4 254.2 100
SAFETY MARGIN 9.3 PSI
OCCUPANCY: BASEMENT



BASEMENT

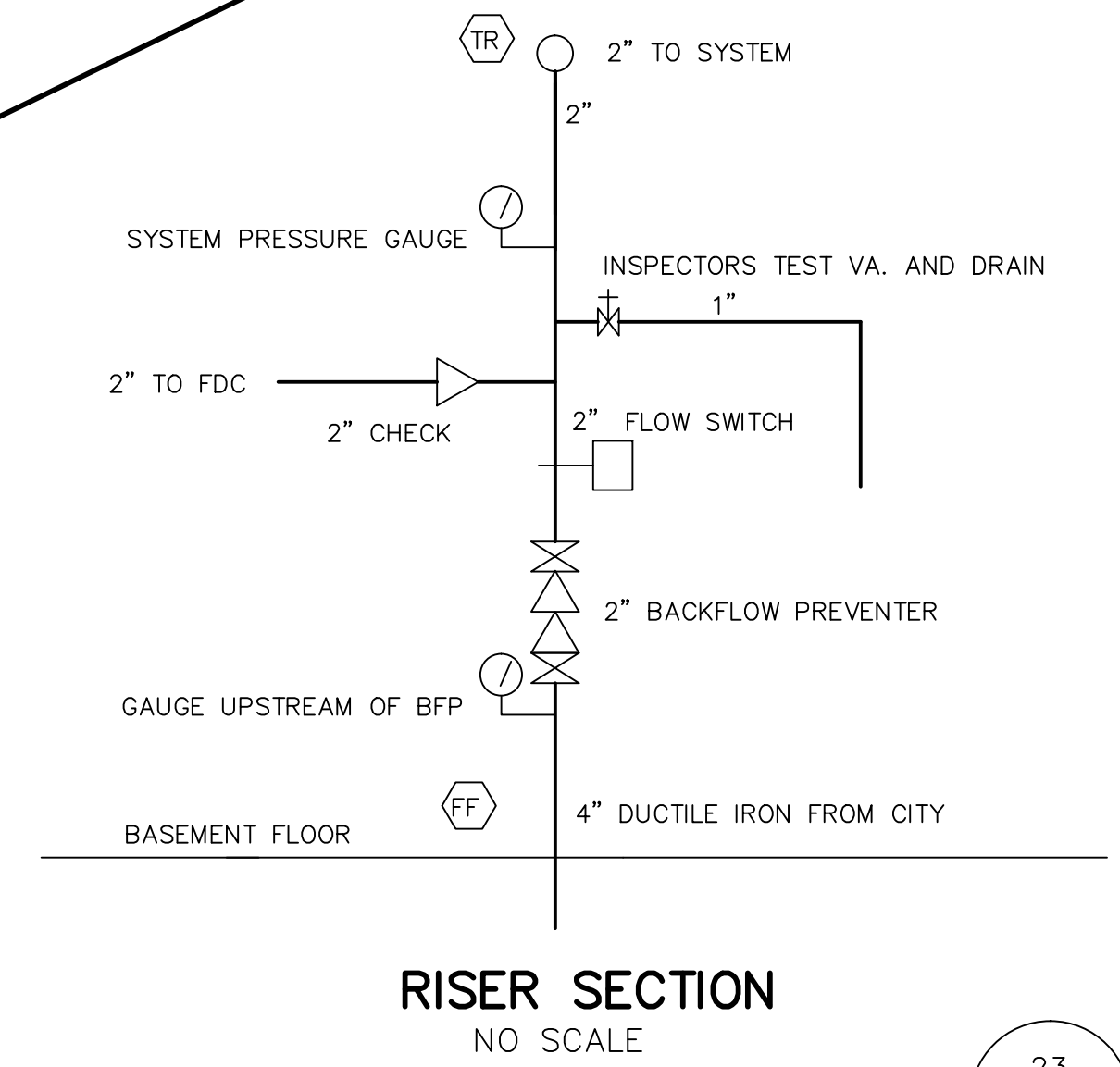


ATTIC PLAN



THIRD FLOOR LATER

CALC -MORNING STREET THIRD FLOOR.WVF
HYDRAULIC DATA:
BASIS OF DESIGN:
DENSITY AREA OF COVERAGE
0.05 2 HEADS
SPRINKLERS TOTAL ORIFICE TEMP
2 7/16" 155'
SYSTEM DEMAND AT CITY:
PRESSURE FLOW HOSE
56.0 38.4 0
SAFETY MARGIN 8.0 PSI
OCCUPANCY: APARTMENT



RISER SECTION
NO SCALE

LEGEND

- ▷ -155' RELIABLE FIRES44 RES HOR SIDEWALL SPRINKLER
- -155' RELIABLE F1FR Q R BRASS UPRIGHTS
- -200' RELIABLE F1FR Q R BRASS UPRIGHT
- FF \bar{x} -XX FIN FLR TO CENTERLINE OF PIPE
- BJ \bar{x} -XX BOTTOM OF JOISTS TO CENTERLINE OF PIPE
- C \bar{x} -XX CEILING TO CENTERLINE OF PIPE
- RISE OR DROP NIPPLE
- RISER BETWEEN FLOORS
- ALL PIPE 4" FROM WALLS UNLESS NOTED

GENERAL NOTES

ALL DIMENSIONS ARE CENTER TO CENTER U/N
ALL 2" AND SMALLER PIPE TO SCH 40 BLACK STEEL
ALL SCREWED FITTINGS TO BE STD. WT. C.I. BLACK U/N
ALL HANGER SPACING AND SIZES TO CONFORM TO NFPA #13.
SUFFICIENT HEAT TO PREVENT FREEZING OF THE WET PIPE SPRINKLER SYSTEM
AND REQUIRED INSULATION METHODS PER NFPA STANDARDS
ARE REQUIRED TO BE FURNISHED BY THE BUYER/OWNER.

SYSTEM CLASSIFICATION

A WET PIPE NFPA #13R
SPRINKLER SYSTEM TO BE INSTALLED IN ALL
AREAS OF THE BUILDING TO MEET NFPA,
STATE, AND CITY OF PORTLAND CODES.

- 23 RELIABLE F1FR 155' OR BRASS UPRIGHT BASEMENT 1/2"x1/2" K=5.6
- 1 RELIABLE F1FR 200' OR BRASS UPRIGHT BASEMENT 1/2"x1/2" K=5.6
- ▷ 39 RELIABLE FIRES44 155' RES. WHITE SIDEWALL LIVING SPACE 1/2"x7/16" K=4.4

DEAN & ALLYN, INC.
FIRE PROTECTION - SPECIAL HAZARD
PO BOX 709, GRAY, MAINE 04039
(207)657-5646 FAX: (207)657-5647

REVISIONS	DATE	APPROVED BY	DATE	SURVEYED BY	HAK	3-25-16	TITLE

NO OF SPRINKLERS SHOWN ON THIS SHEET	63
NO OF SPRINKLERS ON XX	XX
CONTRACT NO.	C161333

PAMELA HAWKES
90 MORNING STREET
PORTLAND, MAINE