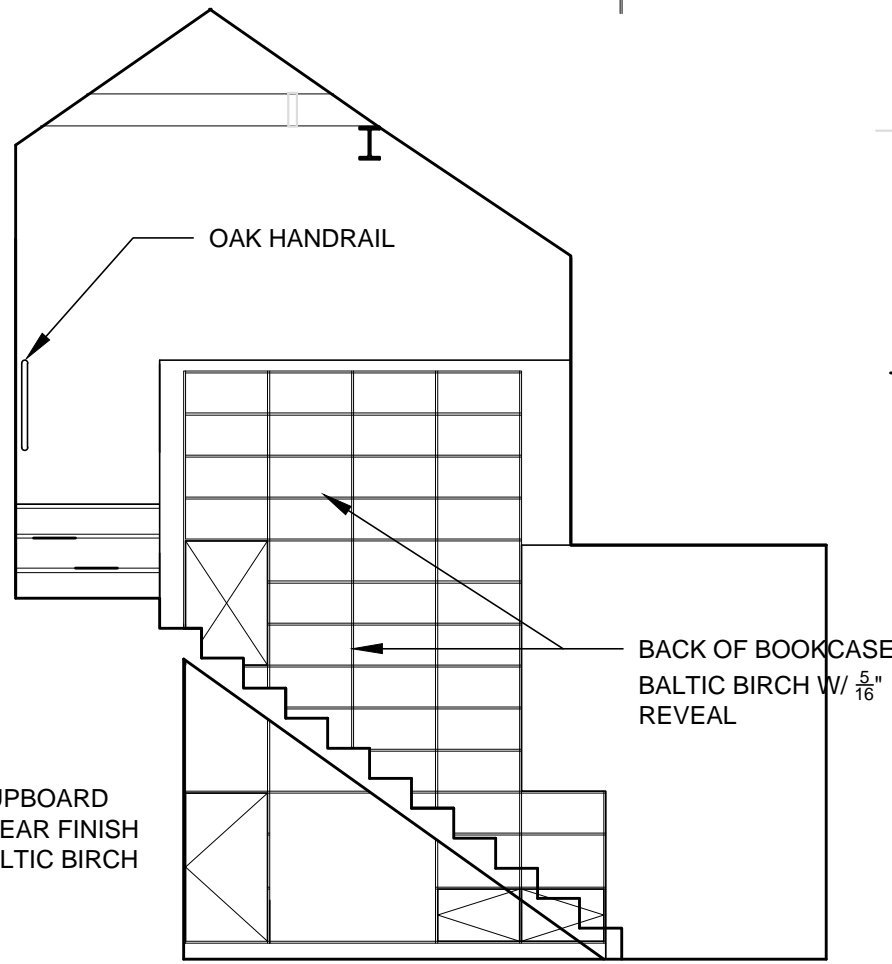
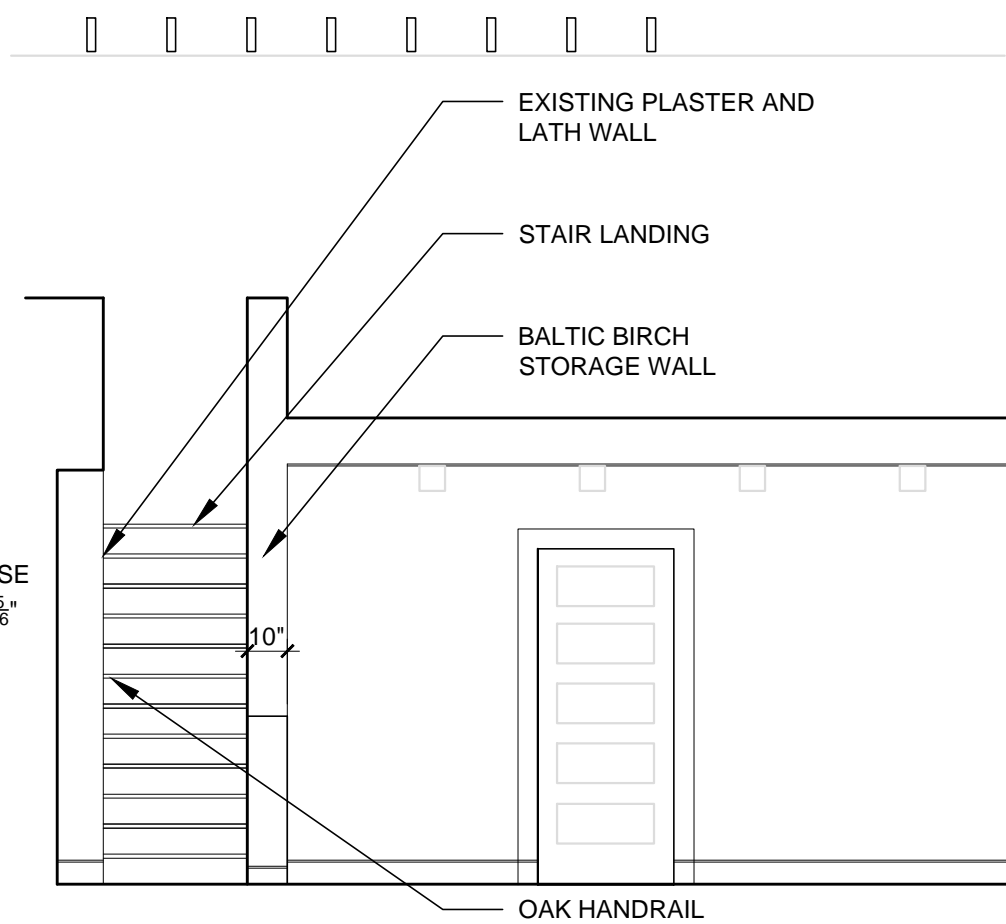


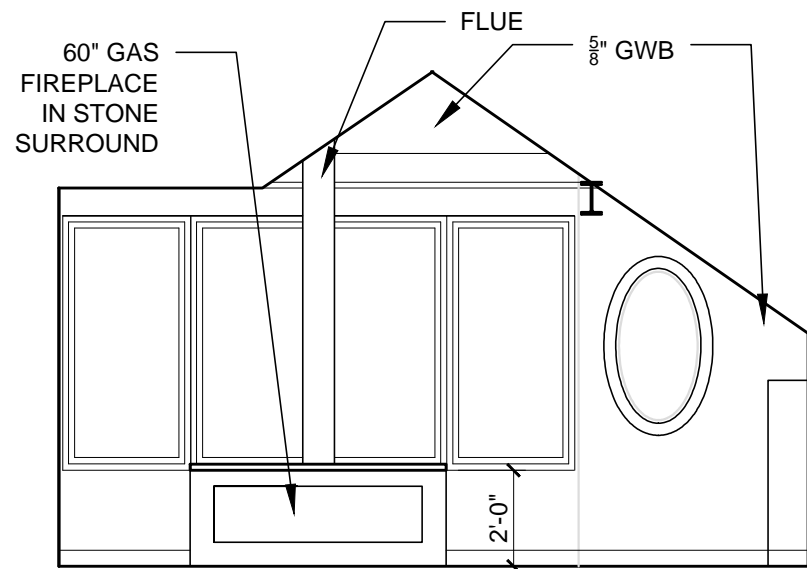
1 LIVING ROOM - BOOKCASE ELEVATION
1/4" = 1'-0"



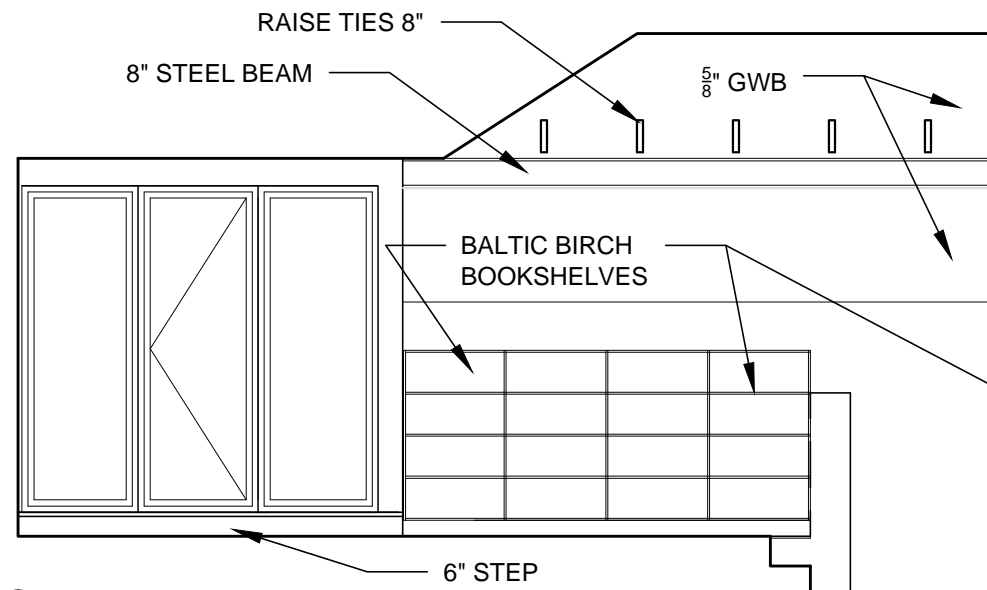
2 BOOKCASE/STAIR - INSIDE ELEVATION
1/4" = 1'-0"



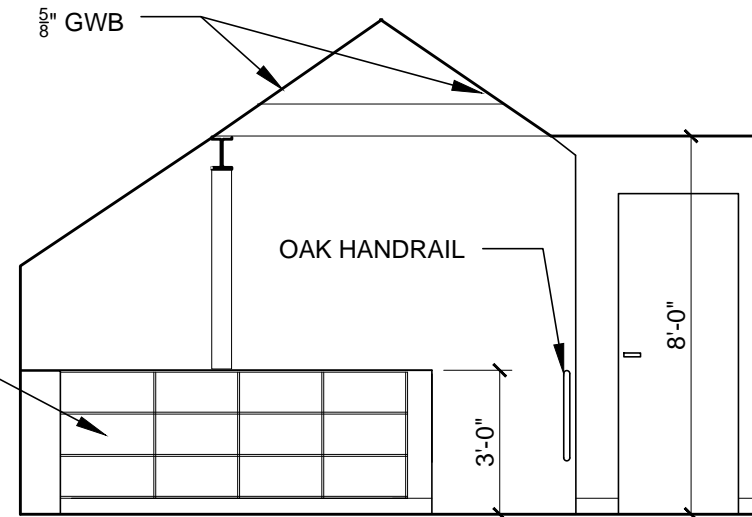
3 LIVING ROOM NORTH ELEVATION
1/4" = 1'-0"



4 SITTING ROOM EAST
1/4" = 1'-0"

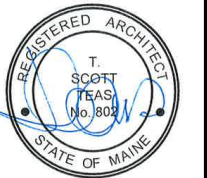


5 SITTING ROOM SOUTH
1/4" = 1'-0"



6 SITTING ROOM WEST
1/4" = 1'-0"

SCATTERGOOD DESIGN
architecture + planning
80 middle street
portland, maine 04101
207-775-6141
scattergooddesign.com



90 MORNING STREET, PORTLAND, ME

INTERIOR ELEVATIONS

scale	date	project #	drawn by	checked by
1/4" = 1'-0"	JAN 10 2016	1304	TST	-

A 4.0