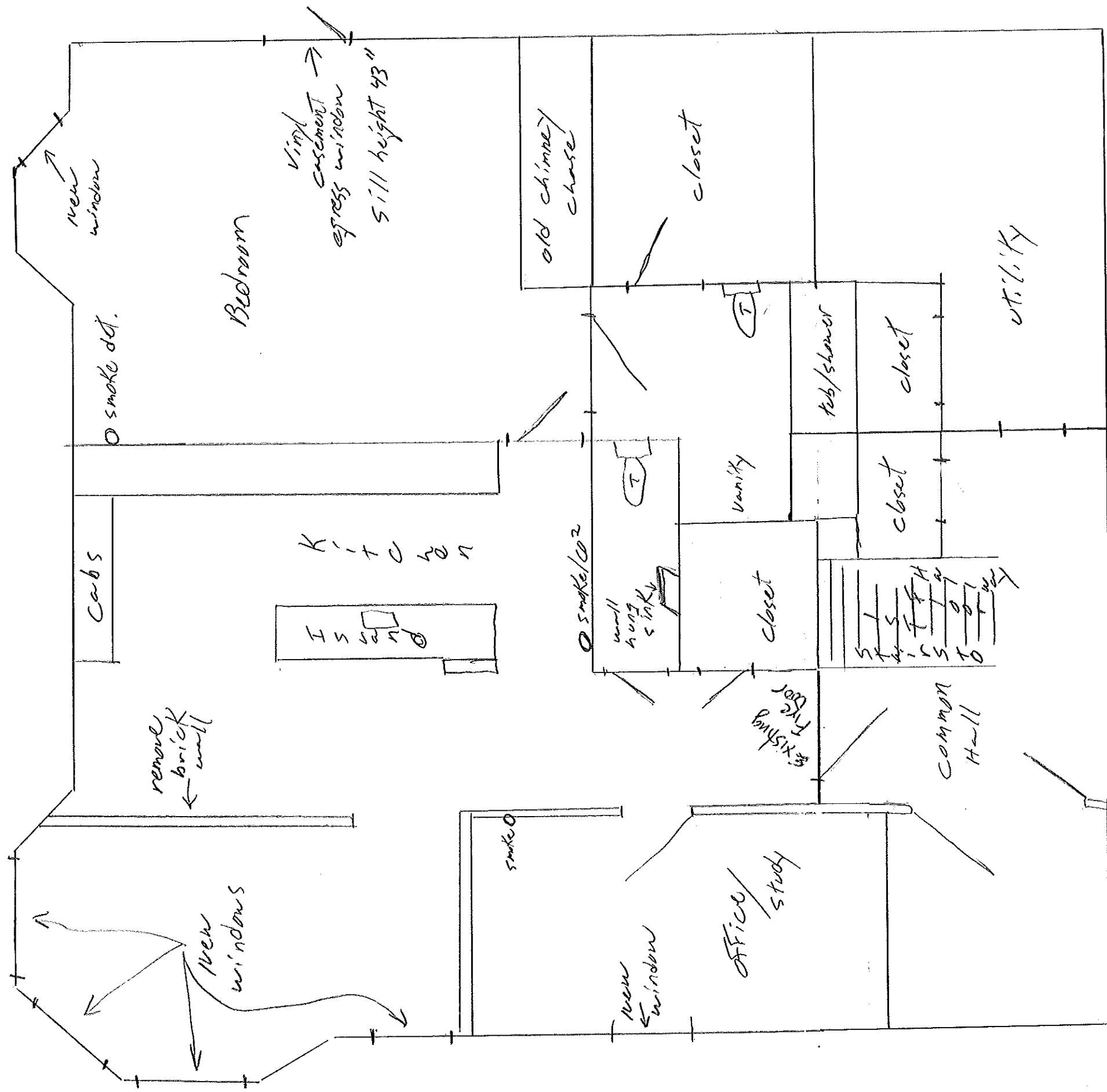


84 Eastern Prom

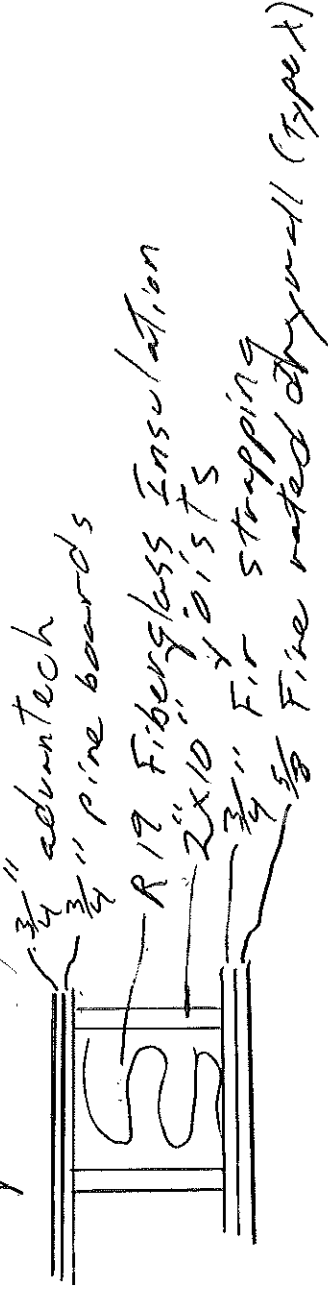
Basement Plan



Scale 1/4" = 1'

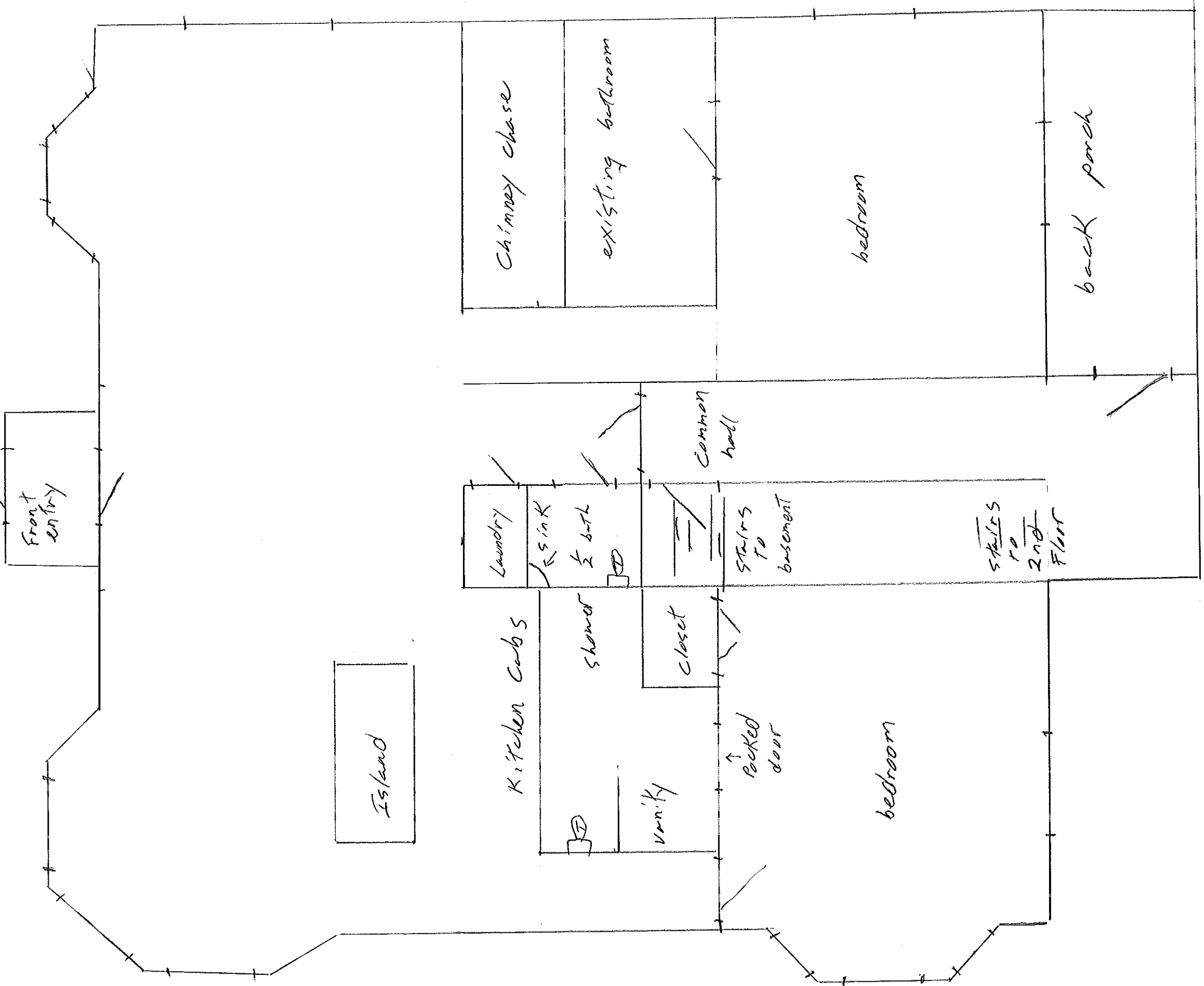
Exterior walls will receive 2" of close cell spray foam and 3" at rim joists other penetrations will be sealed with Fire rated foam Both bathrooms will be connected to an inline fan vented to the outdoors

Floor ceiling assembly:



RECEIVED
JAN 23 2012
Dept. of Building Inspections
City of Portland Maine

84 Eastern Prom
1st Floor



RECEIVED
JAN 23 2012
Dept of Building Inspections
City of Portland Maine