

**PRICING SET - NOT FOR CONSTRUCTION**

**130 EASTERN PROMENADE**

PORTLAND, MAINE

**CARROLL ASSOCIATES**  
Landscape Architects

217 Commercial Street  
Portland, Maine 04101  
207.772.1552  
pcarroll@carroll-assoc.com

Consultants:

**SURVEYOR:**  
Robert Greenlaw PLS  
174 Portland Ave.  
Old Orchard Beach, ME 04064  
207-749-9471

**ARCHITECT:**  
Mark Mueller Architects  
100 Commercial St.  
Portland, ME 04101  
207-774-9057

**ENGINEER:**  
Blais Civil Engineers  
780 Broadway  
So. Portland, ME 04106  
207-767-7300

Drawing Set:

No.	Date	Revision
6-21-11		RE-SUBMISSION TO CITY
7-28-11		FOR CITY REVIEW
8-12-11		PRICING SET
10-11-13		AMENDED SITE PLAN
11-20-13		RE-SUBMITTED TO CITY

Drawing Set:

**PRICING SET**

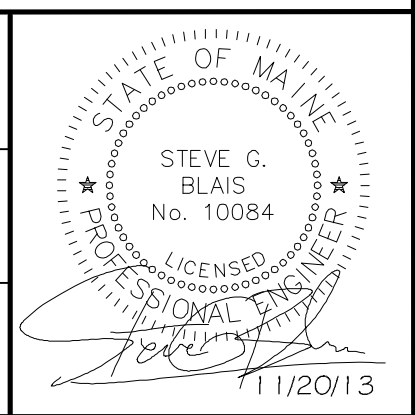
Drawn:

TC/JL

Checked:

PC/SB

Approved:



Drawing Title:

**DRAINAGE PLAN**

Job Number:

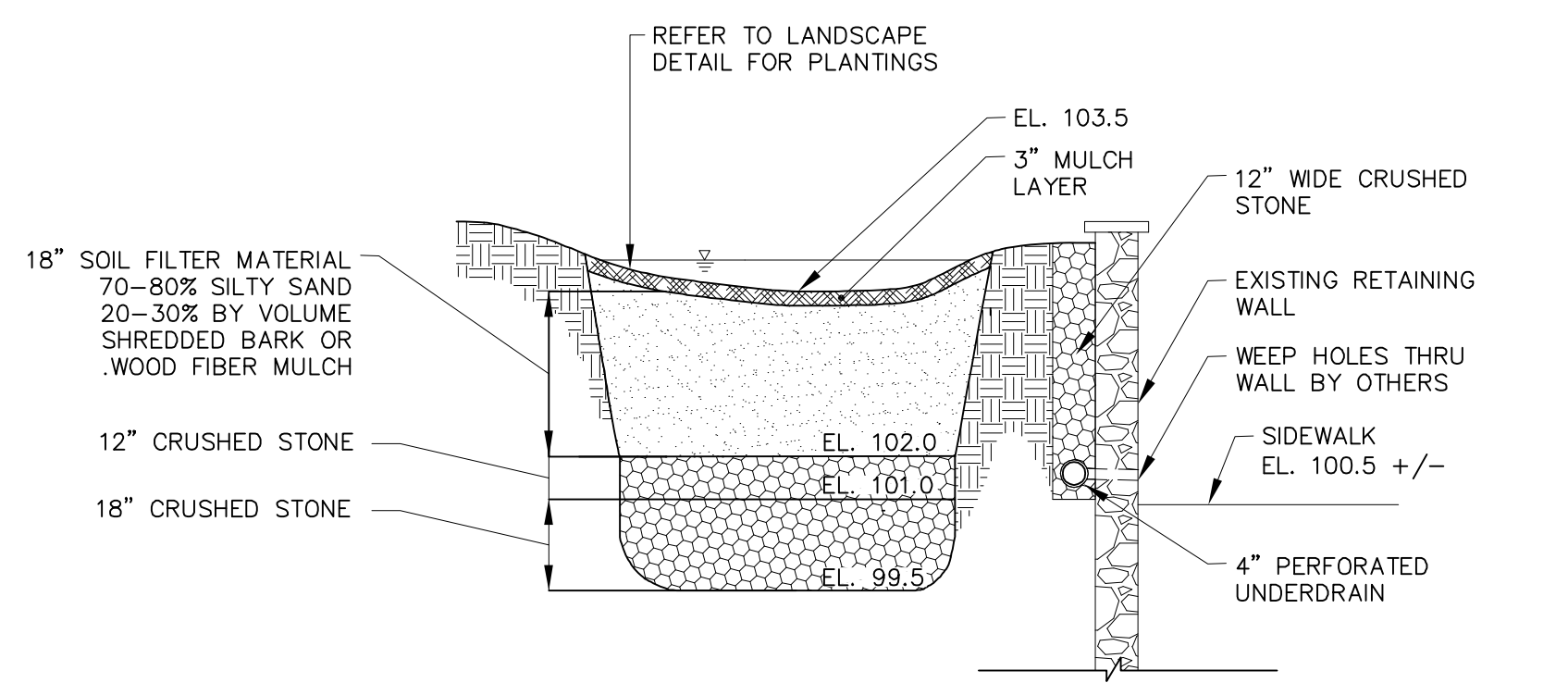
File:

Date: 8-12-2011 Scale: 1" = 10'-0"

Drawing Number:

**D-1.0**

© 2011 CARROLL ASSOCIATES



**1 RAIN GARDEN DETAIL**  
NOT TO SCALE

NOTE:  
CONTRACTOR RESPONSIBLE  
FOR MAINTAINING INTEGRITY  
OF EXISTING WALL.

