

© 2007 TFH ARCHITECTS

**THE ESTATES OF LONGFELLOW INN**  
130 EASTERN PROMENADE, PORTLAND, ME  
CASCO BAY VENTURES



TFH ARCHITECTS  
100 COMMERCIAL STREET  
PORTLAND MAINE 04101  
TELEPHONE 207 775 6141  
ARCHITECTURE PLANNING

CONSULTANTS:  
**CIVIL:**  
C&L  
L&C Consulting Engineers, PA  
957 Broadway  
South Portland, ME 04106  
Tel. 207-757-7500  
Fax: 1-603-207-0233  
**STRUCTURAL:**  
Shelley Engineering, Inc.  
40 Bridge St. Suite 200  
Westbrook, ME 04092  
Ph. 207-854-5465 ext. 19  
Fax. 207-854-8709

REVISIONS:

DATE: 02.14.2008

PROJECT No. 0610

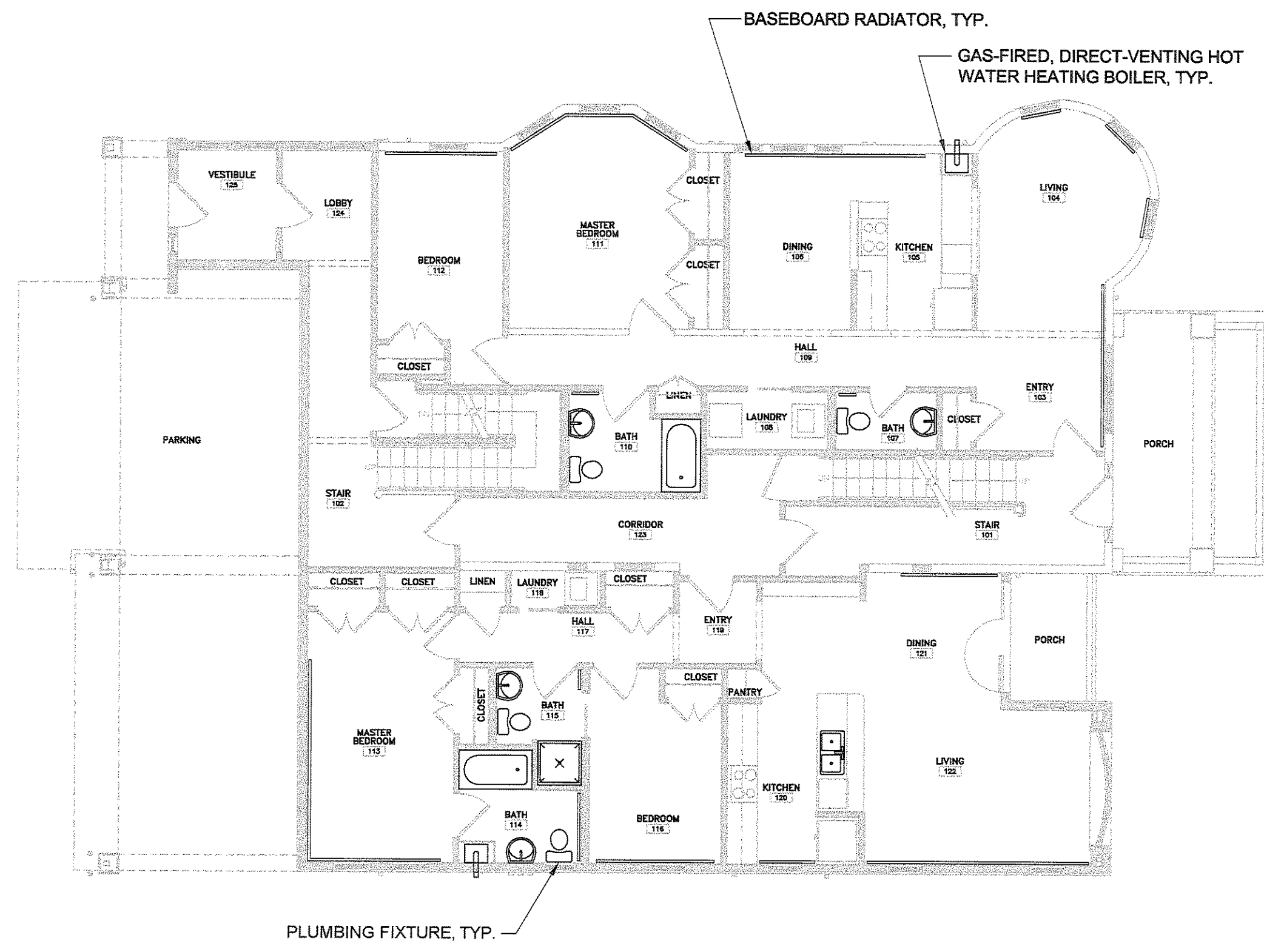
DRAWN BY: SA

CHECKED BY: TST

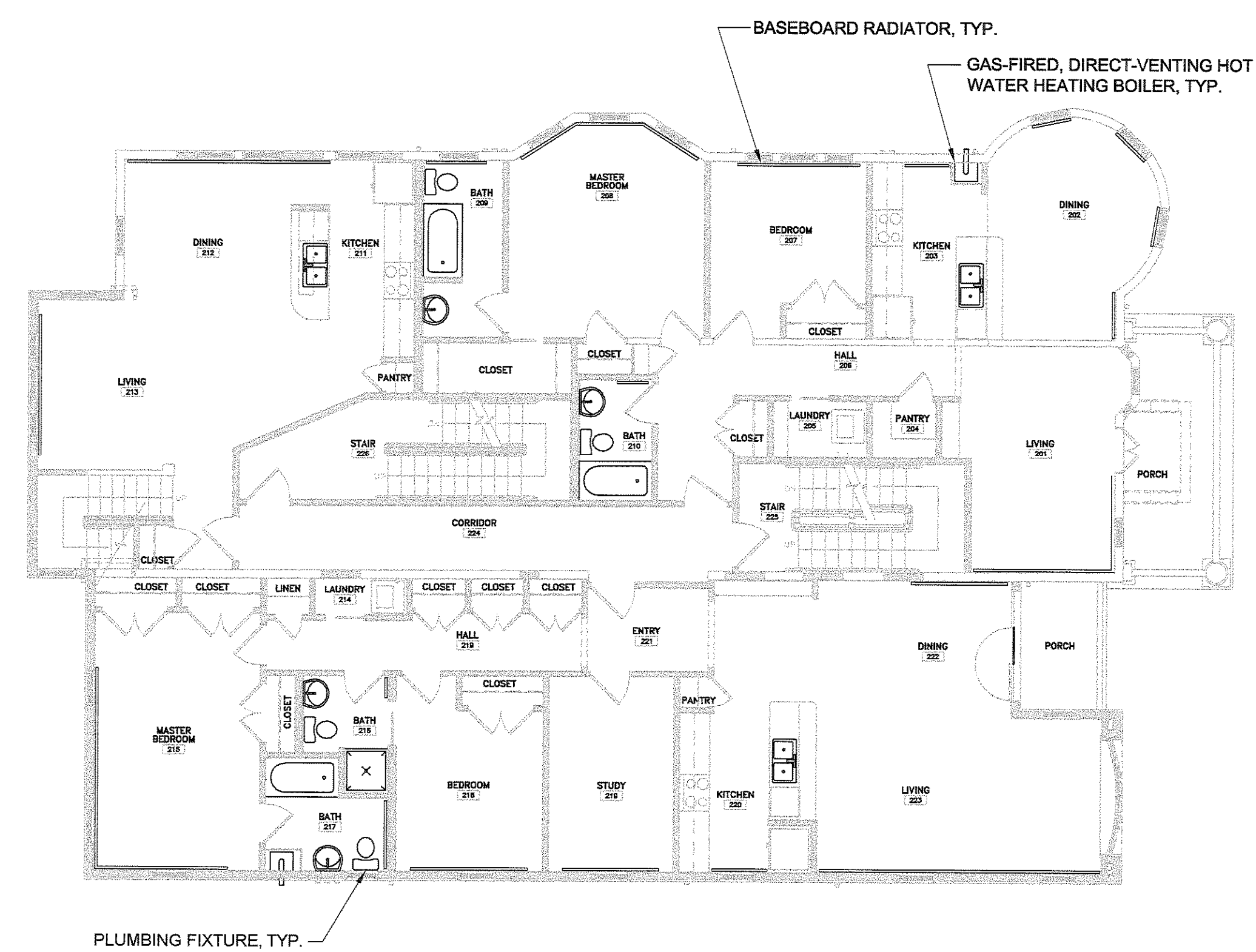
SCALE: AS NOTED

SHEET TITLE:  
PLUMBING LAYOUT

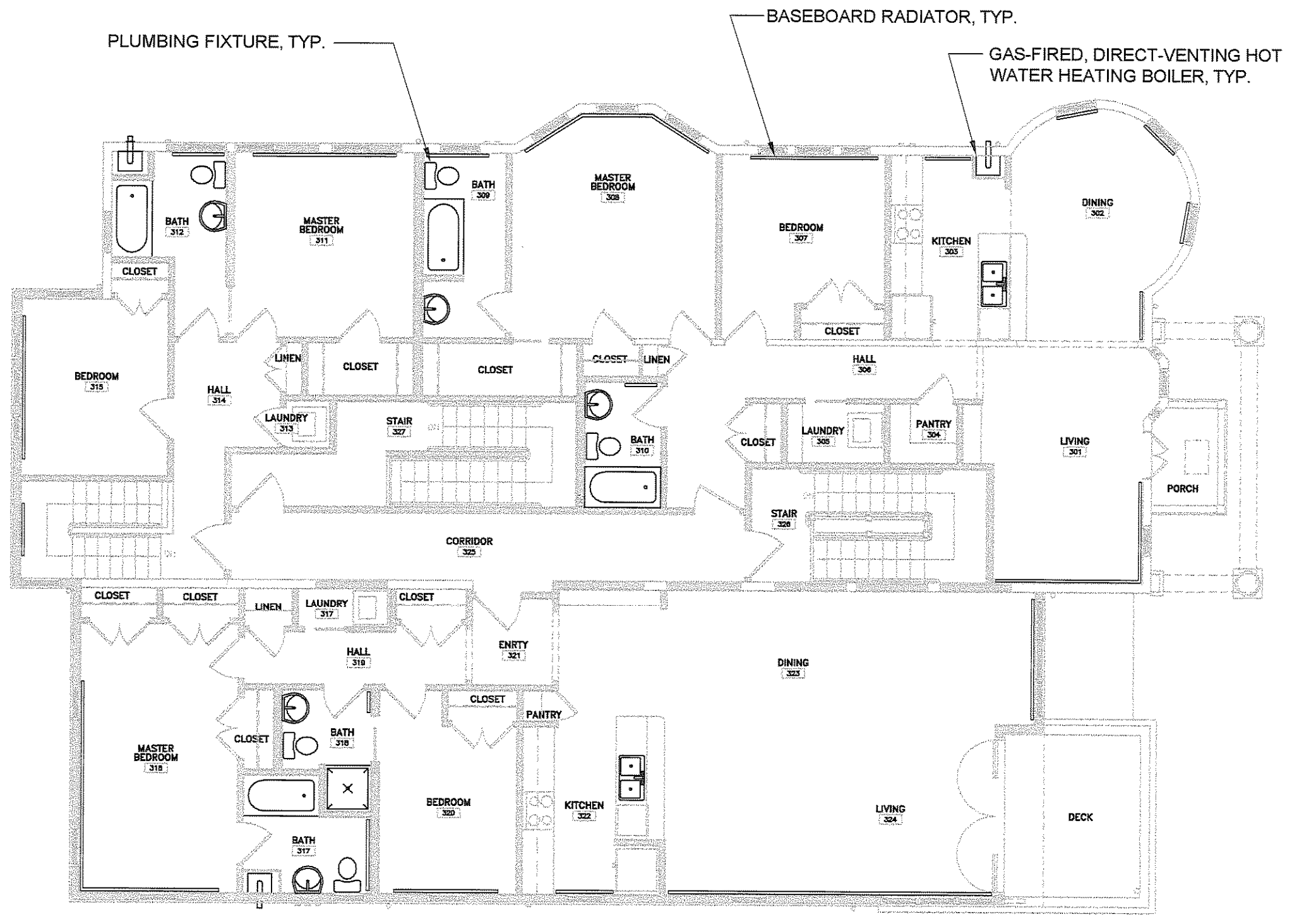
P1.1



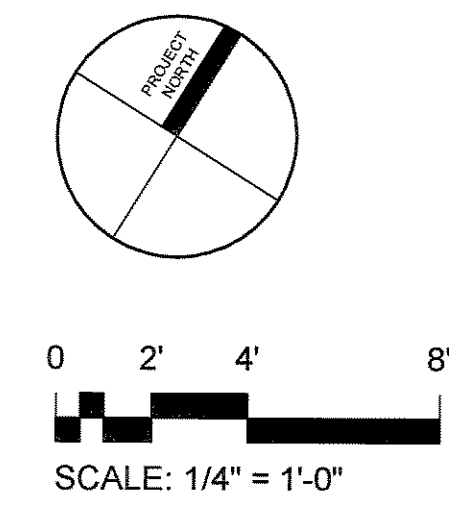
1 FIRST FLOOR PLUMBING LAYOUT  
P1.1 1/8" = 1'-0"



2 SECOND FLOOR PLUMBING LAYOUT  
P1.1 1/8" = 1'-0"



3 THIRD FLOOR PLUMBING LAYOUT  
P1.1 1/8" = 1'-0"



**GENERAL NOTES (SEE G-1.1 FOR MORE GENERAL NOTES)**  
1. **DRAWING NOTES:** DRAWING NOTES, UNLESS THEY INDICATE OR ARE OBVIOUS, REFER TO NEW CONSTRUCTION.  
2. **LAYOUT:** UNLESS INDICATED OTHERWISE, FLOOR PLAN DIMENSIONS ARE TO FINISH FACE OF EXISTING CONSTRUCTION AND ARE TO FACE OF FRAMING OF NEW CONSTRUCTION. DOORS AND WINDOWS ARE DIMENSIONED TO CENTERLINES OR ROUGH OPENINGS. STAIR TREAD AND RISER LAYOUT DIMENSIONS ARE TO TREAD NOSINGS.

\* SEE G1.1 FOR SELECT SPECIFICATIONS