

© 2007 TFH ARCHITECTS

THE ESTATES OF LONGFELLOW INN
130 EASTERN PROMENADE, PORTLAND, ME
CASCO BAY VENTURES

TFH ARCHITECTS
100 COMMERCIAL STREET
PORTLAND MAINE 04101
TELEPHONE 207 775 6141
ARCHITECTURE PLANNING

CONSULTANTS:
ELECTRICAL:
Lynch Consulting Engineers, PA
867 Broadway
South Portland, ME 04106
Tel: 207-767-7300
Fax: 1-855-207-2203
STRUCTURAL:
Shelley Engineering, Inc
40 Bridge St. Suite 303
Westbrook, ME 04092
Ph: 207-564-5485 ext. 19
Fax: 207-664-8706

REVISIONS:

DATE: 02.14.2008

PROJECT No. 0610

DRAWN BY: SA

CHECKED BY: TST

SCALE: AS NOTED

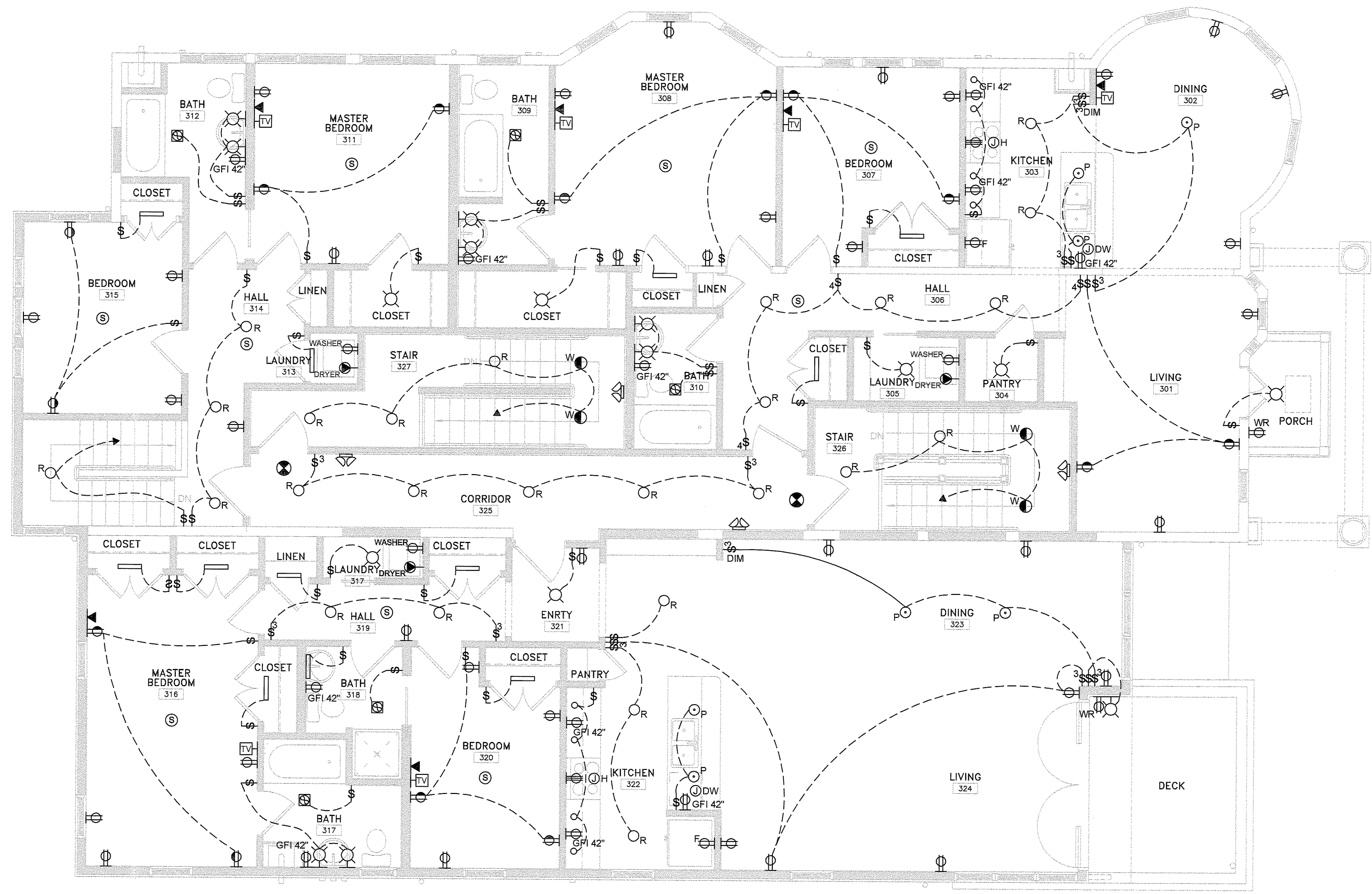
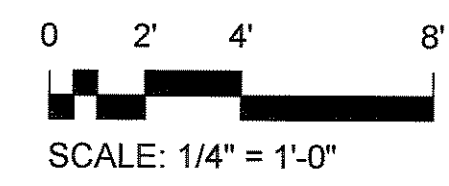
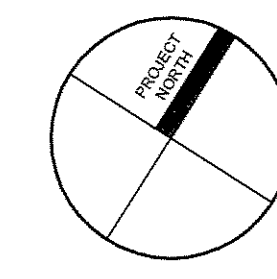
SHEET TITLE:
3RD FLOOR
ELECTRICAL PLAN

E1.4

LIGHTING SYMBOL KEY

- _P PENDANT LIGHT FIXTURE
- ⊗ CEILING MOUNTED LIGHT FIXTURE
- _R RECESSED DOWN LIGHT
- ⊗_W WALL MOUNTED LIGHT FIXTURE
- _W WALL WASHER
- FLUORESCENT FIXTURE
- UNDERCABINET LIGHT FIXTURE
- ⊗ EXIT LIGHT UNIT, WALL MOUNTED
- ⊗ EXIT LIGHT UNIT, CEILING MOUNTED
- ⊗ EMERGENCY LIGHTING
- ⊗ CEILING MOUNTED EXHAUST FAN LIGHT FIXTURE COMBINATION
- ⊗ CEILING MOUNTED EXHAUST FAN
- ☐ TELEPHONE OUTLET
- ☐ CABLE TELEVISION / DATA OUTLET
- ⊗ JUNCTION BOX - "H" DENOTES RANGE HOOD "DW" DENOTES DISHWASHER
- ⊗ DUPLEX RECEPTACLE, MOUNT 18" A.F.F.
- ⊗ HALF SWITCHED DUPLEX RECEPTACLE
- ⊗ GROUND FAULT RECEPTACLE
- ⊗ REFRIGERATOR RECEPTACLE
- ⊗ DUPLEX RECEPTACLE MOUNTED 42" ABOVE FINISH FLOOR
- ⊗ WATER-RESISTANT RECEPTACLE
- ⊗ DRYER OUTLET, 30 AMP, 250 VOLT, 3P. GROUNDING TYPE, FLUSH MOUNTED
- ⊗ SINGLE POLE SWITCH
- ⊗ THREE-WAY SWITCH
- ⊗ SINGLE STATION SMOKE DETECTOR, w/ 90 db. HORN, TANDEM CONNECTION, 120 VOLT

- NOTES:
- THIS IS A SCHEMATIC DESIGN FOR CONCEPT ONLY. FINAL CIRCUITRY AND INSTALLATION WILL BE THE RESPONSIBILITY OF THE INSTALLER. SUBMIT FINAL ELECTRIC DRAWINGS TO ARCHITECT PRIOR TO INSTALLATION FOR APPROVAL.
 - GROUND FAULT CIRCUIT INTERRUPTOR RECEPTACLES IN BATHROOMS AND BASEMENT
 - 20 AMP CIRCUITS MINIMUM.
 - 12 GAUGE WIRE MINIMUM.
 - ALL RECEPTACLES AND TELEPHONE JACKS TO BE INSTALLED AT 18" O.C. FROM THE FLOOR UNLESS OTHERWISE NOTED.
 - VERIFY ALL LIGHTING FIXTURE LOCATIONS IN FIELD PRIOR TO WIRING.



1 THIRD FLOOR ELECTRICAL PLAN
E1.4 1/4" = 1'-0"

GENERAL NOTES (SEE G-1.1 FOR MORE GENERAL NOTES)

- DRAWING NOTES: DRAWING NOTES, UNLESS THEY INDICATE OR ARE OBVIOUS, REFER TO NEW CONSTRUCTION.
- LAYOUT: UNLESS INDICATED OTHERWISE, FLOOR PLAN DIMENSIONS ARE TO FINISH FACE OF EXISTING CONSTRUCTION AND ARE TO FACE OF FRAMING OF NEW CONSTRUCTION. DOORS AND WINDOWS ARE DIMENSIONED TO CENTERLINES OR ROUGH OPENINGS. STAIR TREAD AND RISER LAYOUT DIMENSIONS ARE TO TREAD NOSINGS.

* SEE G1.1 FOR SELECT SPECIFICATIONS