

© 2007 TFH ARCHITECTS

**THE ESTATES OF LONGFELLOW INN**  
130 EASTERN PROMENADE, PORTLAND, ME  
CASCO BAY VENTURES

**TFH ARCHITECTS**  
100 COMMERCIAL STREET  
PORTLAND MAINE 04101  
TELEPHONE 207 775 6141  
ARCHITECTURE PLANNING

**CONSULTANTS:**  
**CIVIL:**  
Lantz Consulting Engineers, PA  
967 Broadway  
South Portland, ME 04106  
Tel: 207-767-7300  
Fax: 1-888-207-2233  
**STRUCTURAL:**  
Shelley Engineering, Inc.  
80 Bridge St. Suite 200  
Westbrook, ME 04092  
Ph: 207-654-5455 ext. 19  
Fax: 207-654-9706

REVISIONS:

DATE: 02.14.2008

PROJECT No. 0610

DRAWN BY: SA

CHECKED BY: TST

SCALE: AS NOTED

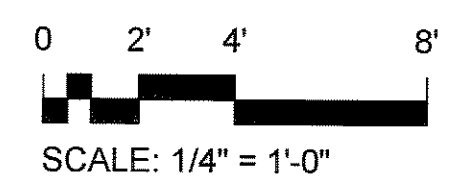
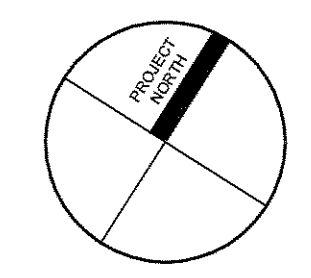
SHEET TITLE:  
1ST FLOOR  
ELECTRICAL PLAN

E1.2

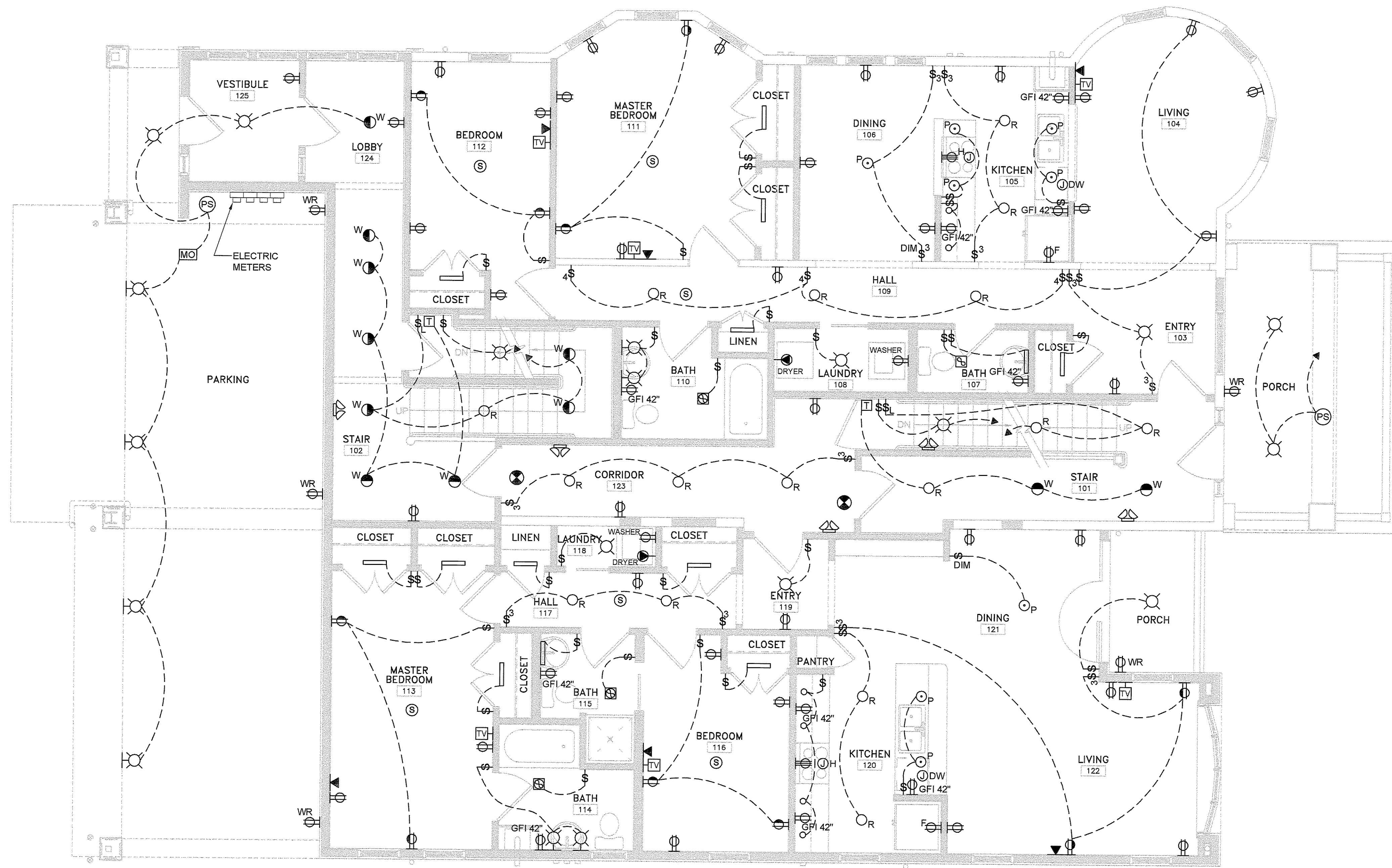
**LIGHTING SYMBOL KEY**

- P PENDANT LIGHT FIXTURE
- ⊗ CEILING MOUNTED LIGHT FIXTURE
- R RECESSED DOWN LIGHT
- ⊗ W WALL MOUNTED LIGHT FIXTURE
- ⊗ W WALL WASHER
- FLUORESCENT FIXTURE
- UNDERCABINET LIGHT FIXTURE
- ⊗ EXIT LIGHT UNIT, WALL MOUNTED
- ⊗ EXIT LIGHT UNIT, CEILING MOUNTED
- ⊗ EMERGENCY LIGHTING
- ⊗ CEILING MOUNTED EXHAUST FAN LIGHT FIXTURE COMBINATION
- ⊗ CEILING MOUNTED EXHAUST FAN
- ⊗ TELEPHONE OUTLET
- ⊗ CABLE TELEVISION / DATA OUTLET
- ⊗ JUNCTION BOX - "H" DENOTES RANGE HOOD  
"DW" DENOTES DISHWASHER
- ⊗ DUPLEX RECEPTACLE, MOUNT 18" A.F.F.
- ⊗ HALF SWITCHED DUPLEX RECEPTACLE
- ⊗ GROUND FAULT RECEPTACLE
- ⊗ REFRIGERATOR RECEPTACLE
- ⊗ DUPLEX RECEPTACLE MOUNTED 42" ABOVE FINISH FLOOR
- ⊗ WATER-RESISTANT RECEPTACLE
- ⊗ DRYER OUTLET, 30 AMP, 250 VOLT, 3P. GROUNDING TYPE, FLUSH MOUNTED
- ⊗ SINGLE POLE SWITCH
- ⊗ THREE-WAY SWITCH
- ⊗ SINGLE STATION SMOKE DETECTOR, w/ 90 db. HORN, TANDEM CONNECTION, 120 VOLT

- NOTES:**
1. THIS IS A SCHEMATIC DESIGN FOR CONCEPT ONLY. FINAL CIRCUITRY AND INSTALLATION WILL BE THE RESPONSIBILITY OF THE INSTALLER. SUBMIT FINAL ELECTRIC DRAWINGS TO ARCHITECT PRIOR TO INSTALLATION FOR APPROVAL.
  2. 20 AMP CIRCUITS MINIMUM.
  3. GROUND FAULT CIRCUIT INTERRUPTOR RECEPTACLES IN BATHROOMS AND BASEMENT
  4. 20 AMP CIRCUITS MINIMUM.
  5. 12 GAUGE WIRE MINIMUM.



SCALE: 1/4" = 1'-0"



**1** FIRST FLOOR ELECTRICAL PLAN  
E1.2 1/4" = 1'-0"

**GENERAL NOTES (SEE G-1.1 FOR MORE GENERAL NOTES)**

1. **DRAWING NOTES:** DRAWING NOTES, UNLESS THEY INDICATE OR ARE OBVIOUS, REFER TO NEW CONSTRUCTION.
2. **LAYOUT:** UNLESS INDICATED OTHERWISE, FLOOR PLAN DIMENSIONS ARE TO FINISH FACE OF EXISTING CONSTRUCTION AND ARE TO FACE OF FRAMING OF NEW CONSTRUCTION. DOORS AND WINDOWS ARE DIMENSIONED TO CENTERLINES OR ROUGH OPENINGS. STAIR TREAD AND RISER LAYOUT DIMENSIONS ARE TO TREAD NOSINGS.

\* SEE G1.1 FOR SELECT SPECIFICATIONS