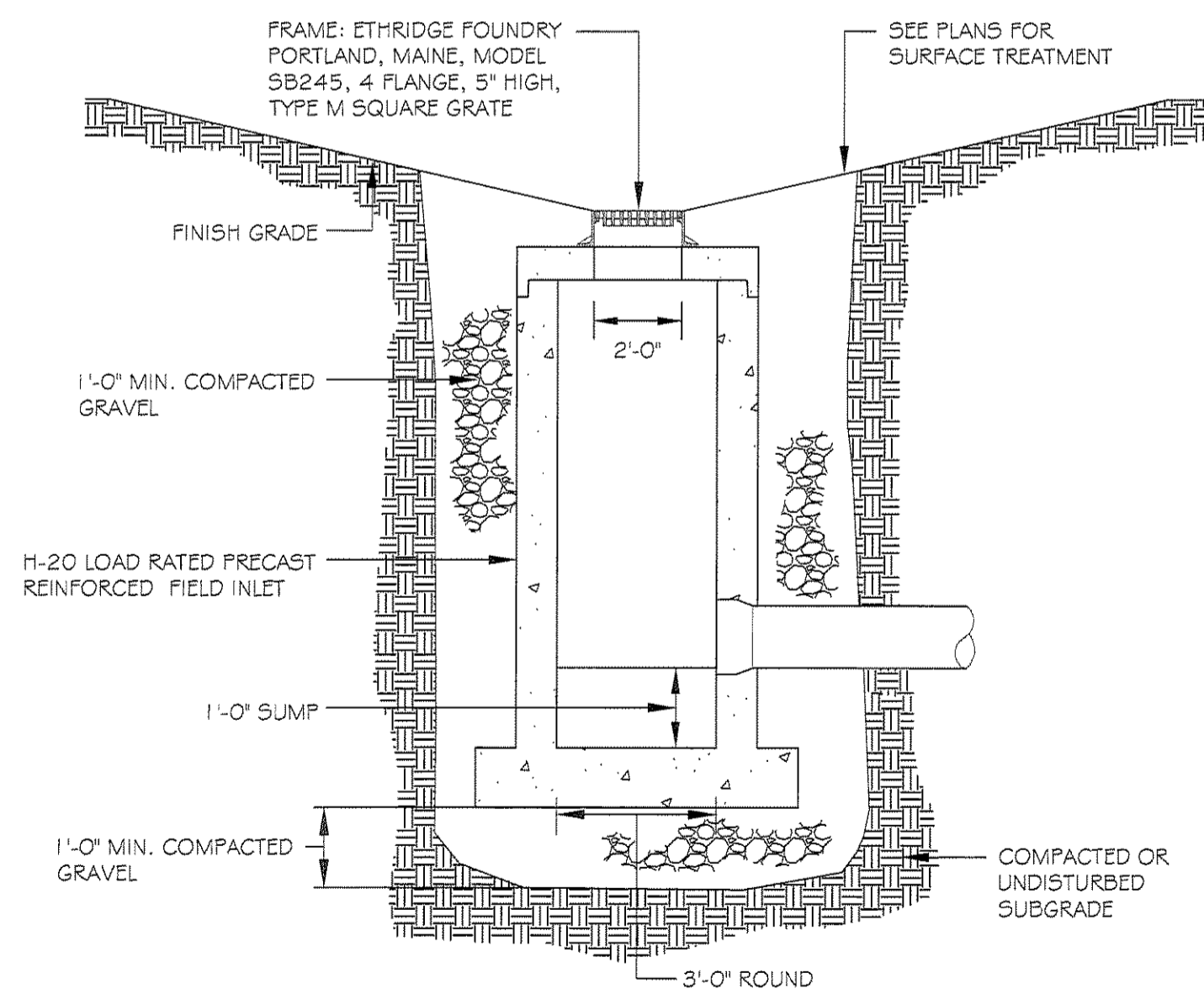
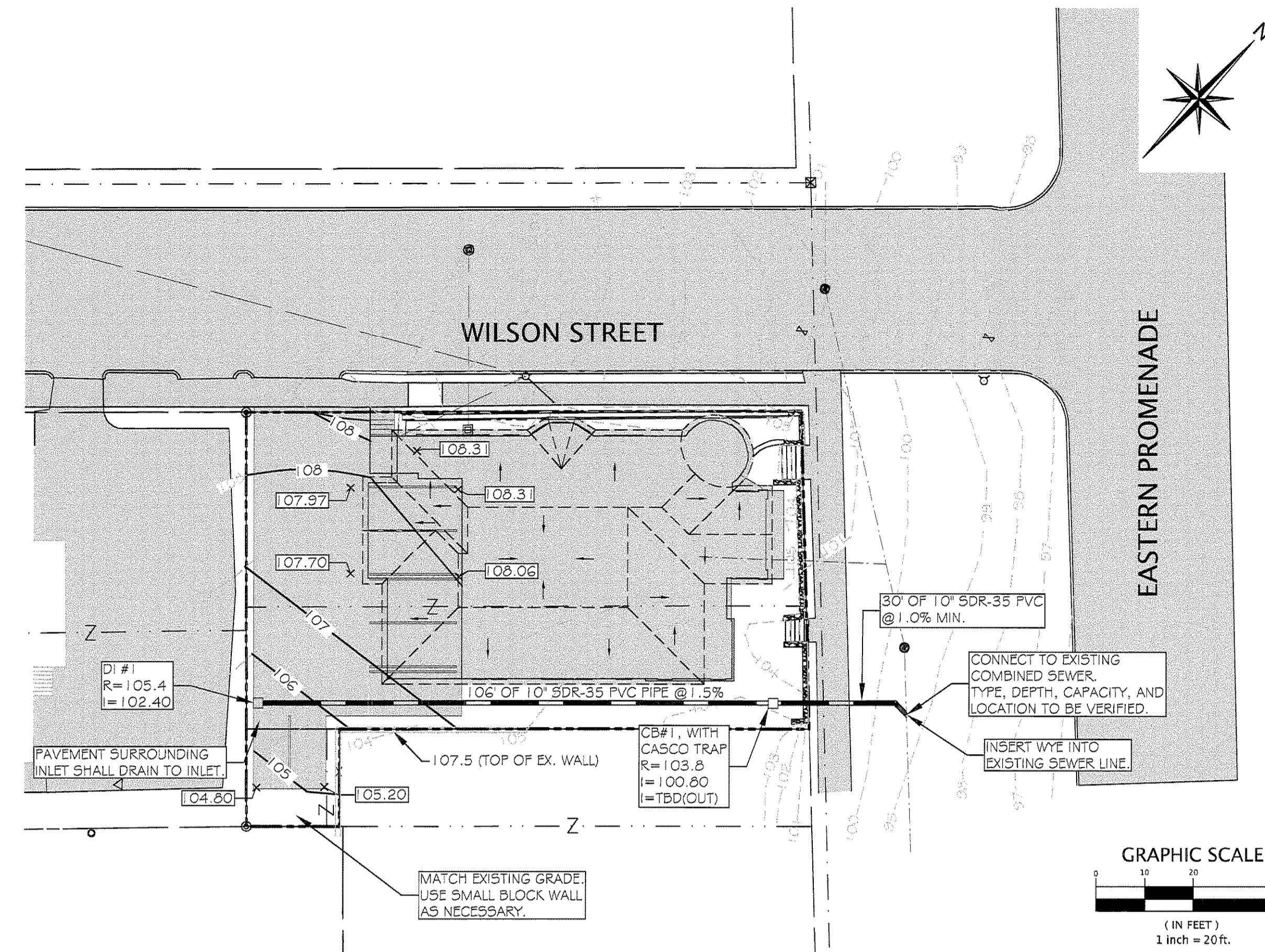
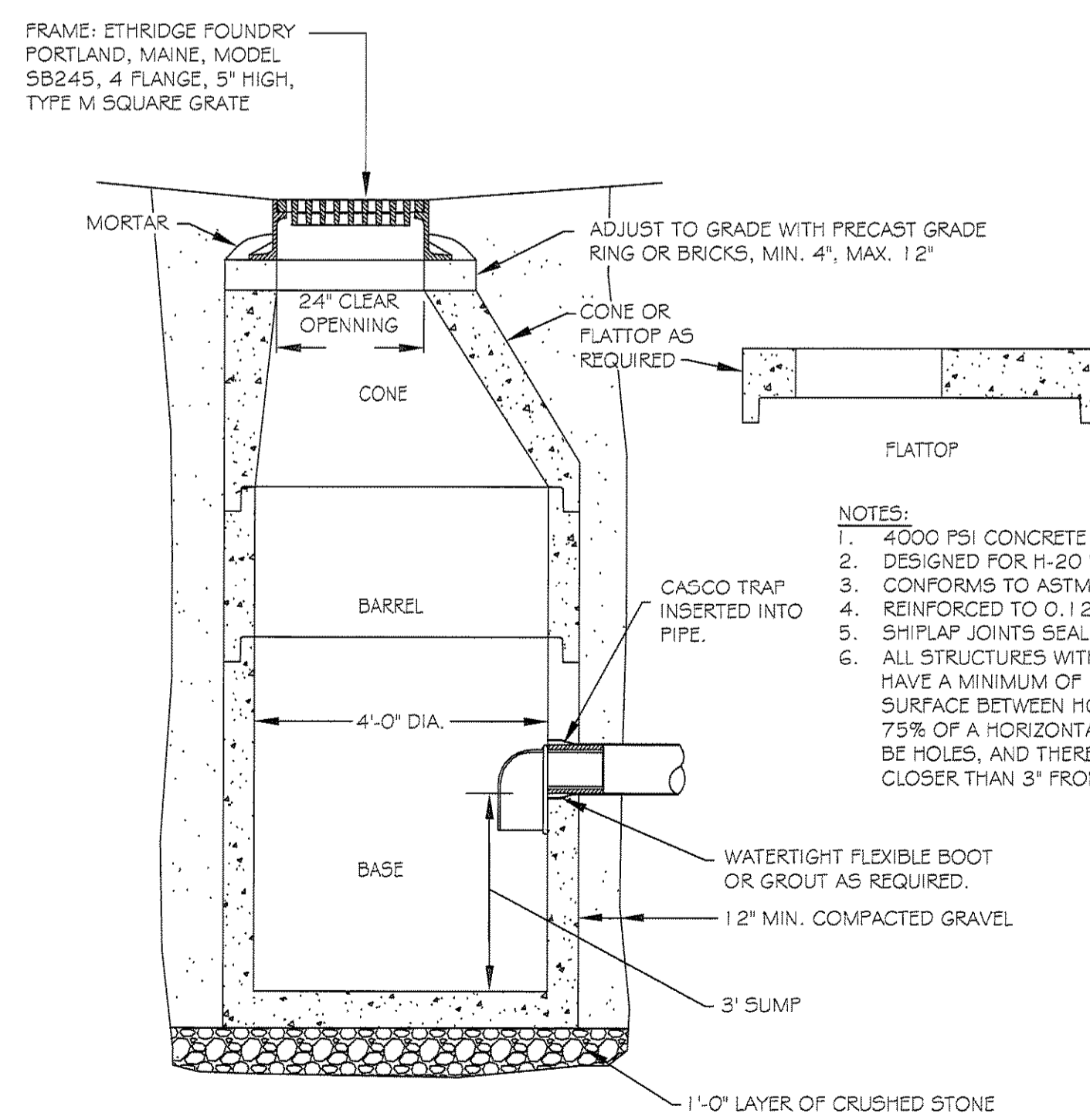


1 CLEANOUT DETAIL
NOT TO SCALE



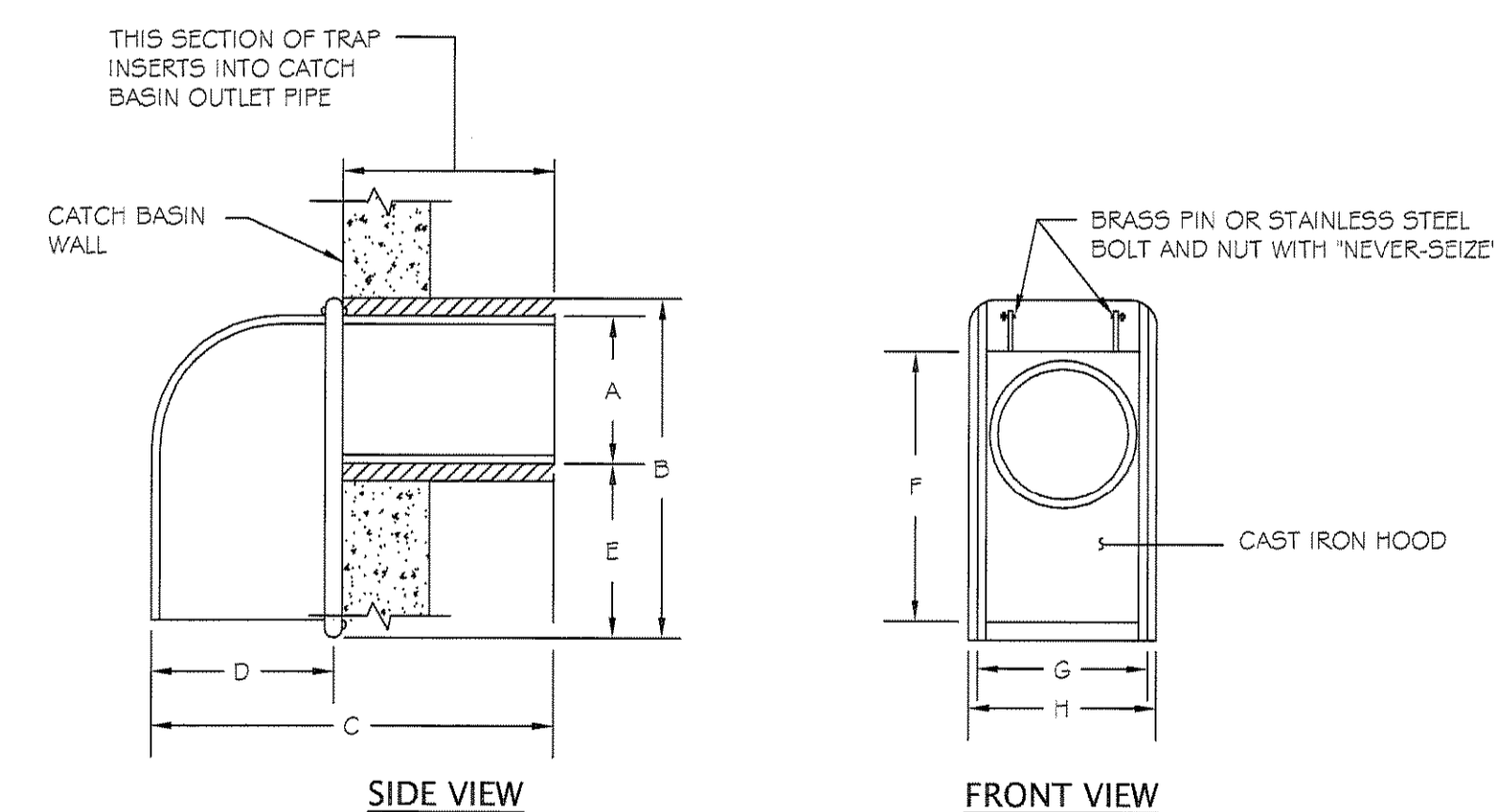
- NOTES:
1. MAXIMUM HEIGHT OF STRUCTURE SHALL BE 6'-0".
 2. PRECAST REINFORCED CONCRETE SHALL HAVE 4,000 PSI STRENGTH AT 28 DAYS.
 3. ALL COMPONENTS SHALL BE DESIGNED FOR H-20 WHEEL LOADING.
 4. FIELD INLET SHALL CONFORM TO ASTM C-478 AND M.D.O.T. SPECIFICATIONS.
 5. CONCRETE SHALL BE REINFORCED TO 0.12 IN.SQ./I.F.

2 DRAINAGE INLET (DI) DETAIL
NOT TO SCALE



- NOTES:
1. 4000 PSI CONCRETE AT 28 DAYS.
 2. DESIGNED FOR H-20 WHEEL LOADING.
 3. CONFORMS TO ASTM C-478 SPECIFICATIONS.
 4. REINFORCED TO 0.12 IN.SQ./I.F.
 5. SHIPLAP JOINTS SEALED WITH BUTYL RUBBER.
 6. ALL STRUCTURES WITH MULTIPLE PIPES SHALL HAVE A MINIMUM OF 1'-0" OR OUTSIDE SURFACE BETWEEN HOLES, NO MORE THAN 75% OF A HORIZONTAL CROSS-SECTION SHALL BE HOLES, AND THERE SHALL BE NO HOLES CLOSER THAN 3" FROM JOINTS.

3 CATCH BASIN
NOT TO SCALE



SIZE	A	B	C	D	E	F	G	H
6 in.	5 1/2"	13 3/8"	13 3/4"	5 3/8"	5 7/8"	11 5/8"	6 1/2"	7 1/4"
8 in.	7 1/2"	15"	15 3/8"	5 1/2"	5 3/8"	13 3/4"	8 3/4"	9 3/8"
10 in.	9 1/2"	16"	16 1/4"	6"	4 1/2"	14 1/8"	11 1/2"	12 3/8"
12 in.	11 1/2"	17"	22"	8"	3 1/2"	17"	12 1/2"	13 3/8"

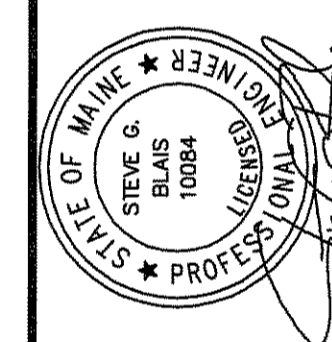
(AS MANUFACTURED BY THE ETHERIDGE FOUNDRY IN PORTLAND, ME.)

NOTE: CONTRACTOR SHALL UTILIZE THE 'CASCO TRAP' AS MANUFACTURED BY THE ETHERIDGE FOUNDRY, OR AN APPROVED EQUIVALENT AS SUPPLIED BY THE LEBARON FOUNDRY, MODEL # L, 202 'STANDARD CATCH BASIN TRAP'

4 CASCO TRAP DETAIL
NOT TO SCALE

LAND CONSULTING ENGINEERS, PA

967 BROADWAY
SOUTH PORTLAND, MAINE 04106
(207) 767-7300



DRAINAGE IMPROVEMENTS PLAN & DETAILS
THE ESTATES OF LONGFELLOW INN
130 EASTERN PROMENADE
PORTLAND
MAINE

DATE: 11/19/07

C.I.: AS SHOWN

SCALE: AS SHOWN

DRAWING

D3

© 2007 LAND CONSULTING ENGINEERS, PA

LCE 07126

No.	DATE	DESCRIPTION	REVISIONS
4	2/11/08	FOR CONSTRUCTION	
3	1/29/08	PER CITY COMMENTS	
2	1/24/08	REVISE PARKING LOT GRADING PER CITY COMMENTS	
1	1/22/08	REVISE PARKING LOT GRADING PER CITY COMMENTS	