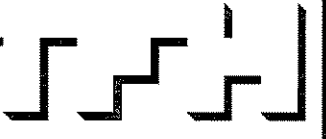


© 2007 TFH ARCHITECTS

THE ESTATES OF LONGFELLOW INN
130 EASTERN PROMENADE, PORTLAND, ME
CASCO BAY VENTURES



TFH ARCHITECTS
100 COMMERCIAL STREET
PORTLAND MAINE 04101
TELEPHONE 207 775 6141
ARCHITECTURE PLANNING

CONSULTANTS:
CIVIL:
Lars Consulting Engineers, PA
987 Broadway
South Portland, ME 04108
Tel: 207-767-7300
Fax: 1-866-207-2033
STRUCTURAL:
Shelley Engineering, Inc
80 Bridge St., Suite 300
Westbrook, ME 04092
Ph: 207-854-5456 ext. 19
Fax: 207-854-8708

REVISIONS:

DATE: 02.14.2008

PROJECT No. 0610

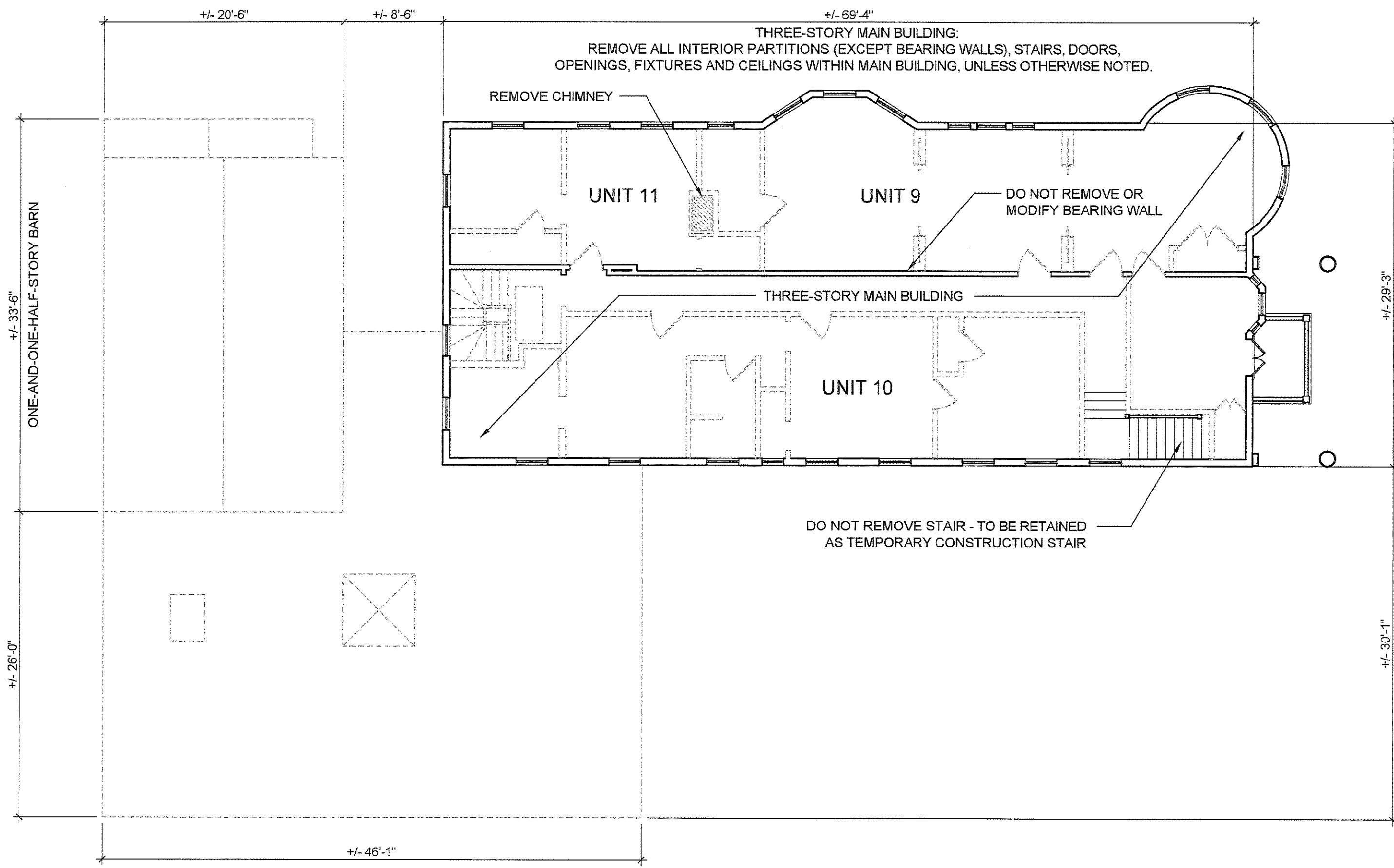
DRAWN BY: SA

CHECKED BY: TST

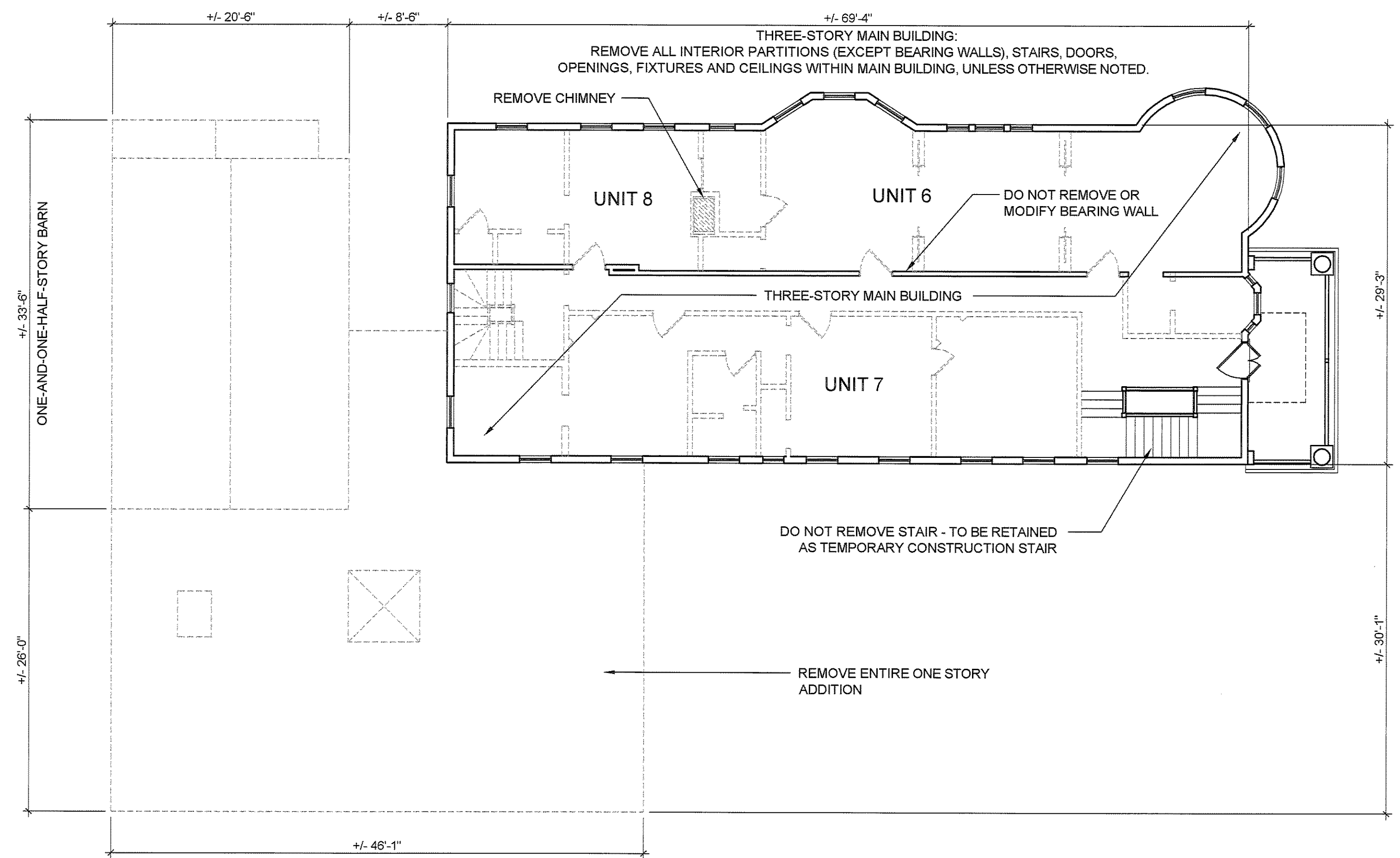
SCALE: AS NOTED

SHEET TITLE:
DEMOLITION PLANS

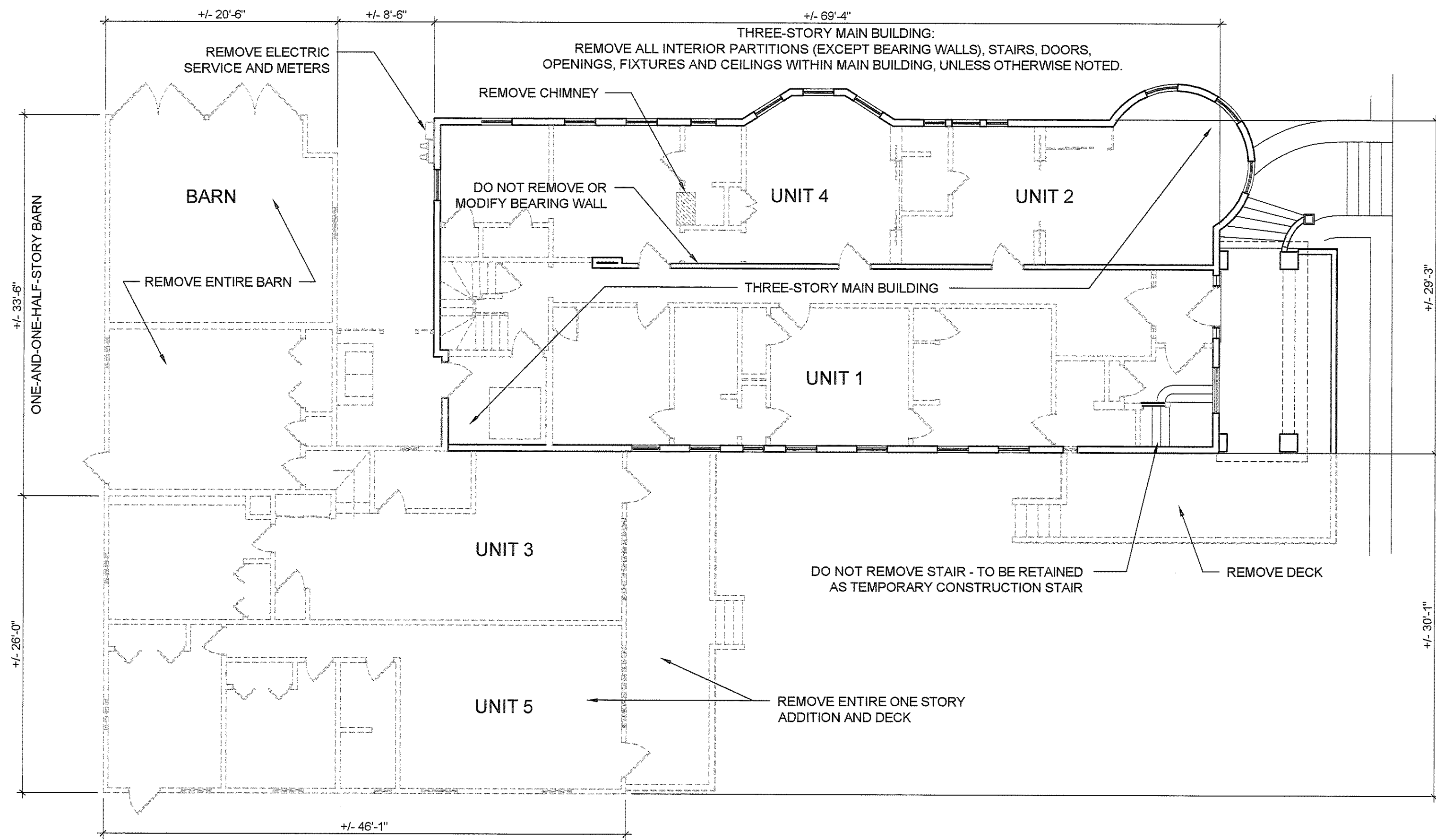
D-1.1



3 THIRD FLOOR DEMOLITION PLAN
D1.1 1/8" = 1'-0"



2 SECOND FLOOR DEMOLITION PLAN
D1.1 1/8" = 1'-0"



1 FIRST FLOOR DEMOLITION PLAN
D1.1 1/8" = 1'-0"

LEGEND

- EXISTING CONSTRUCTION TO REMAIN
- DEMOLITION

DEMOLITION NOTES (SEE G-1.1 FOR MORE GENERAL NOTES)
D-1. **DEMOLITION DRAWING NOTES:** DEMOLITION DRAWING NOTES REFER TO EXISTING CONSTRUCTION.
D-2. **FLOOR TO FLOOR:** FLOOR TO FLOOR DIMENSIONS IS +/- 10'-0".
D-3. **BEARING LINES:** DEMOLITION CONTRACTOR AND/OR BUILDER TO CONFIRM THAT ACTUAL LOCATION OF BEARING LINES ARE AS INDICATED. IF NOT, BRING TO THE ARCHITECTS ATTENTION FOR RESOLUTION.

* SEE G1.1 FOR SELECT SPECIFICATIONS