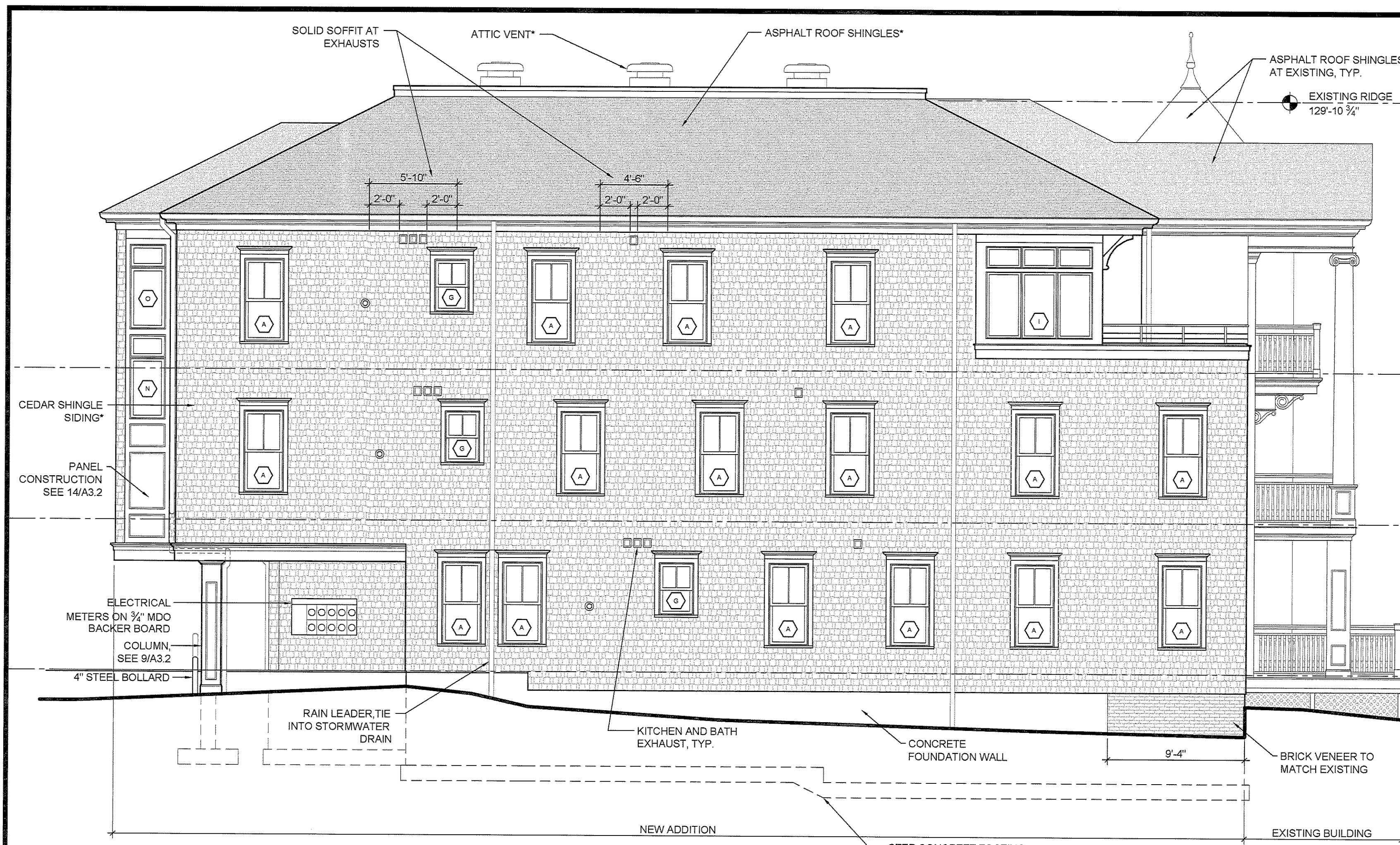
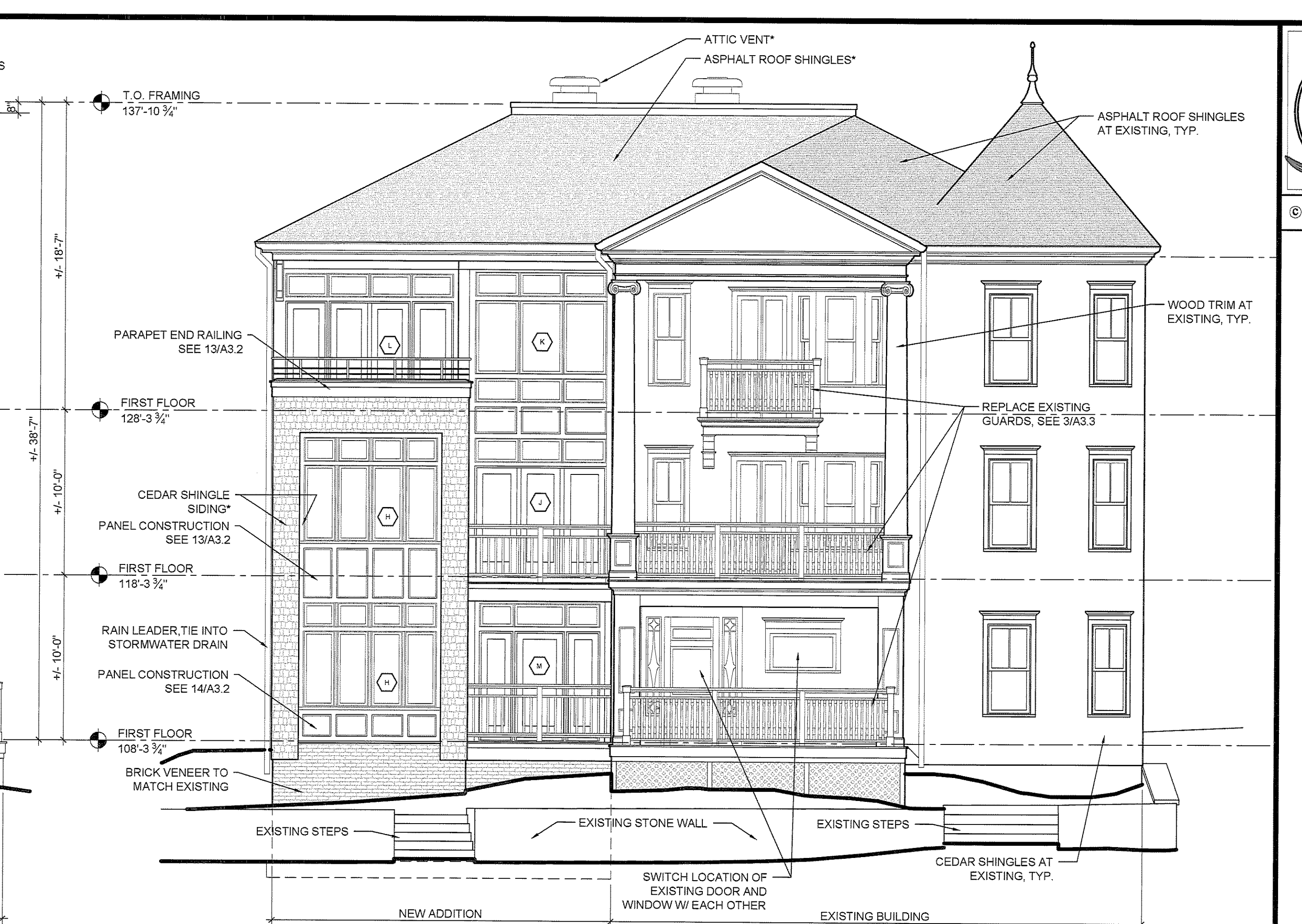


© 2007 TFH ARCHITECTS

THE ESTATES OF LONGFELLOW INN
130 EASTERN PROMENADE, PORTLAND, ME
CASCO BAY VENTURES



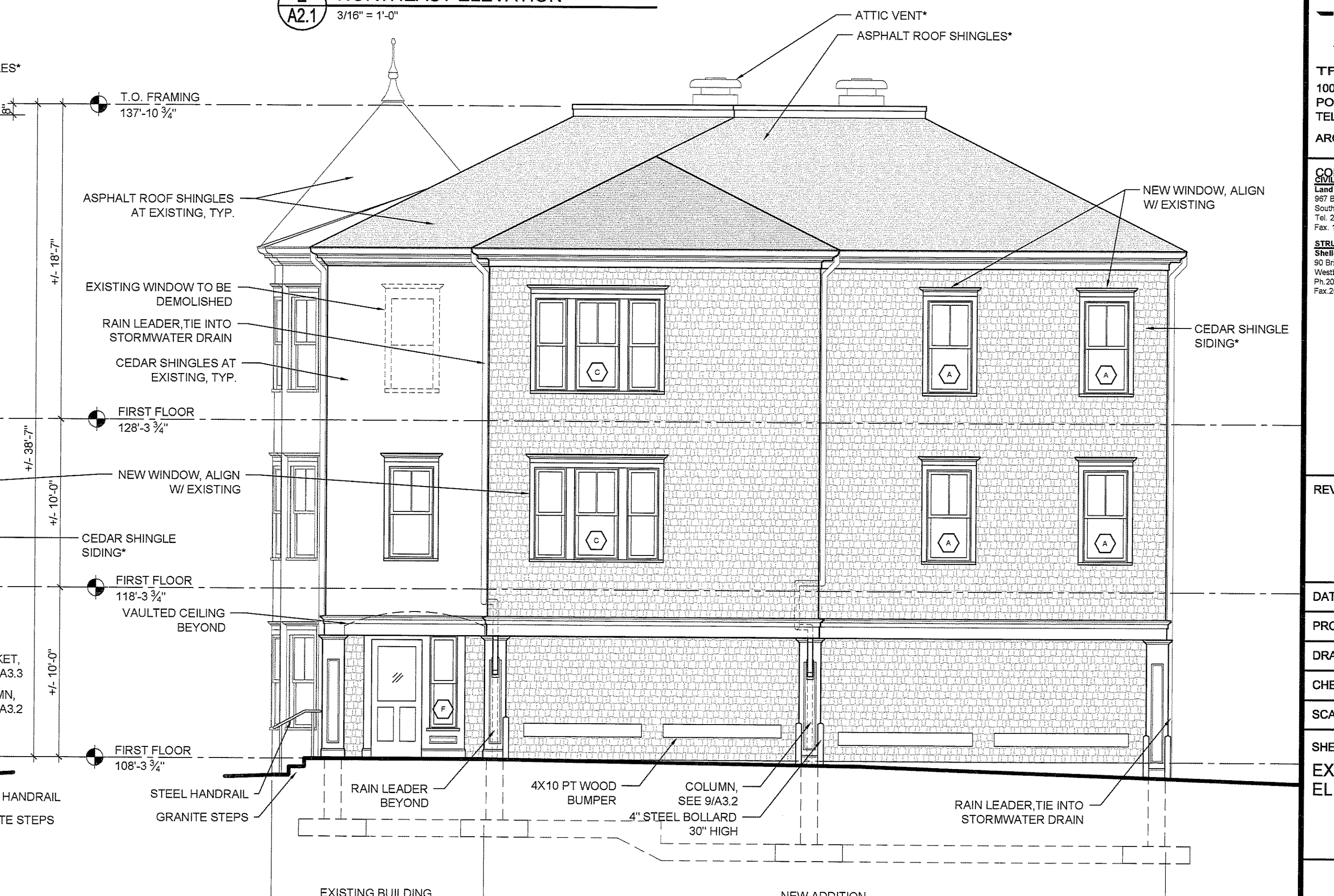
1 SOUTHEAST ELEVATION
A2.1 3/16" = 1'-0"



2 NORTHEAST ELEVATION
A2.1 3/16" = 1'-0"



3 NORTHWEST ELEVATION
A2.1 3/16" = 1'-0"



4 SOUTHWEST ELEVATION
A2.1 3/16" = 1'-0"

GENERAL NOTES: (SEE G-1.1 FOR MORE GENERAL NOTES)
1. DRAWING NOTES: DRAWING NOTES, UNLESS THEY INDICATE OR ARE OBVIOUS, REFER TO NEW CONSTRUCTION.
2. LAYOUT: UNLESS INDICATED OTHERWISE, FLOOR PLAN DIMENSIONS ARE TO FINISH FACE OF EXISTING CONSTRUCTION AND ARE TO FACE OF FRAMING OF NEW CONSTRUCTION. DOORS AND WINDOWS ARE DIMENSIONED TO CENTERLINES OR ROUGH OPENINGS. STAIR TREAD AND RISER LAYOUT DIMENSIONS ARE TO TREAD NOSINGS.

* SEE G1.1 FOR SELECT SPECIFICATIONS

TFH ARCHITECTS
100 COMMERCIAL STREET
PORTLAND, MAINE 04101
TELEPHONE 207 775 6141
ARCHITECTURE PLANNING

CONSULTANTS:
Land Consulting Engineers, PA
807 Broadway
South Portland, ME 04106
Tel: 207-767-7300
Fax: 1-866-207-2233
STRUCTURAL
Shelley Engineering, Inc
90 Bridge St., Suite 302
Westbrook, ME 04092
Ph: 207-654-5460 ext. 19
Fax: 207-654-8708

REVISIONS:

DATE: 02.14.2008

PROJECT No. 0610

DRAWN BY: SA

CHECKED BY: TST

SCALE: AS NOTED

SHEET TITLE:
EXTERIOR ELEVATIONS

A2.1