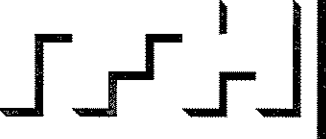


© 2007 TFH ARCHITECTS

**THE ESTATES OF LONGFELLOW INN**  
130 EASTERN PROMENADE, PORTLAND, ME  
CASCO BAY VENTURES



**TFH ARCHITECTS**  
100 COMMERCIAL STREET  
PORTLAND MAINE 04101  
TELEPHONE 207 775 6141  
ARCHITECTURE PLANNING

**CONSULTANTS:**  
**CIVIL:**  
Land Consulting Engineers, PA  
897 Broadway  
South Portland, ME 04106  
Tel: 207-767-7300  
Fax: 1-866-207-2033  
**STRUCTURAL:**  
Shelley Engineering, Inc.  
60 Bridge St. Suite 300  
Westbrook, ME 04092  
Ph: 207-854-5466 ext. 19  
Fax: 207-854-8708

REVISIONS:

DATE: 02.14.2008

PROJECT No. 0610

DRAWN BY: SA

CHECKED BY: TST

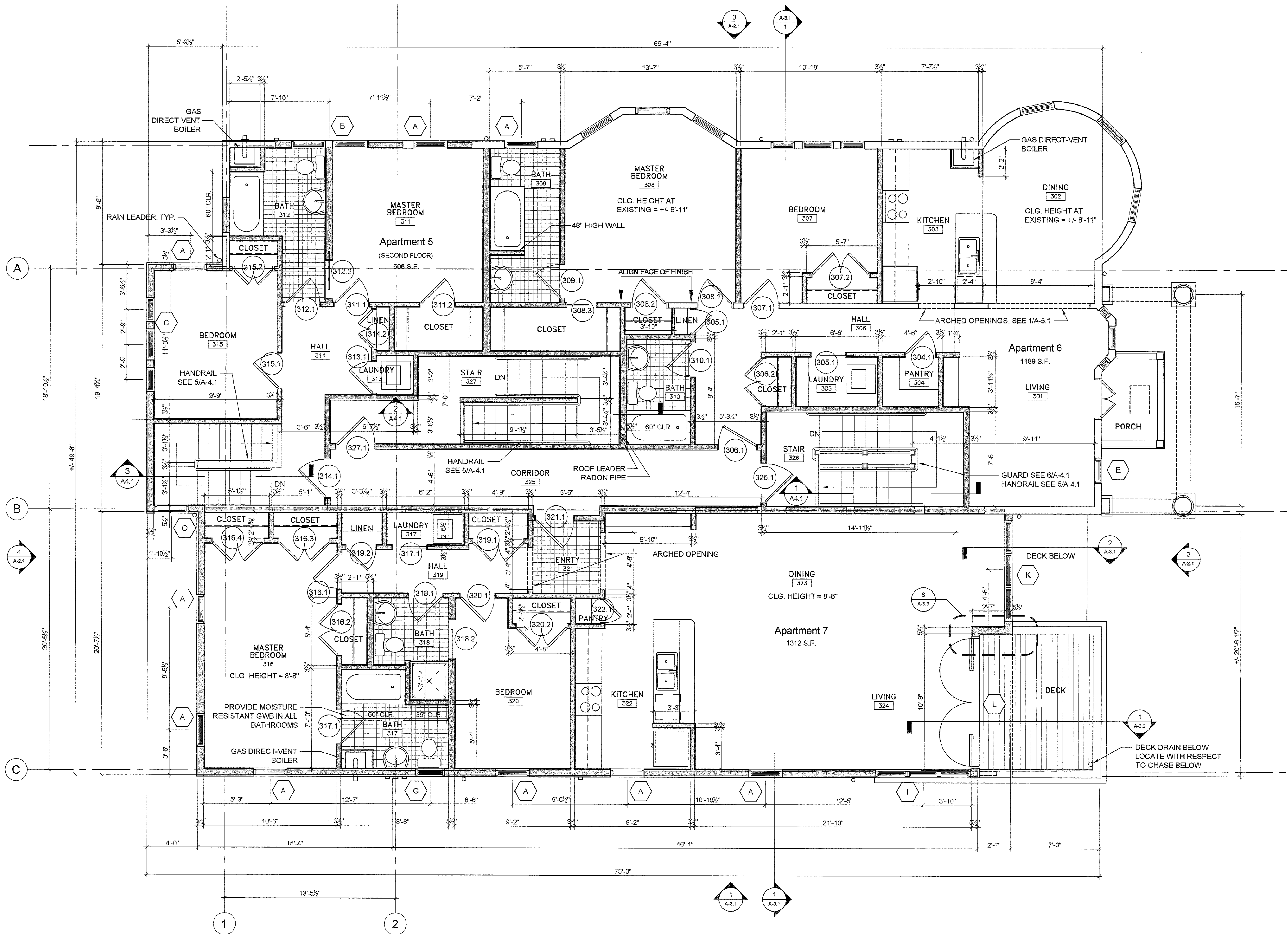
SCALE: AS NOTED

SHEET TITLE:

3RD FLOOR PLAN

**A1.4**

\* SEE G1.1 FOR SELECT SPECIFICATIONS



**1** FIRST FLOOR PLAN  
1/4" = 1'-0"

**LEGEND**

- EXISTING CONSTRUCTION TO REMAIN
- DEMOLITION
- NEW CONSTRUCTION
- NEW CONSTRUCTION WITH SOUND INSULATION
- 1 HOUR RATED NEW CONSTRUCTION
- 1 HOUR RATED EXISTING CONSTRUCTION

NOTE: SEE A-3.1 FOR CONSTRUCTION ASSEMBLIES

**GENERAL NOTES (SEE G-1.1 FOR MORE GENERAL NOTES)**

1. **DRAWING NOTES:** DRAWING NOTES, UNLESS THEY INDICATE OR ARE OBVIOUS, REFER TO NEW CONSTRUCTION.
2. **LAYOUT:** UNLESS INDICATED OTHERWISE, FLOOR PLAN DIMENSIONS ARE TO FINISH FACE OF EXISTING CONSTRUCTION AND ARE TO FACE OF FRAMING OF NEW CONSTRUCTION. DOORS AND WINDOWS ARE DIMENSIONED TO CENTERLINES OR ROUGH OPENINGS. STAIR TREAD AND RISER LAYOUT DIMENSIONS ARE TO TREAD NOSINGS.

