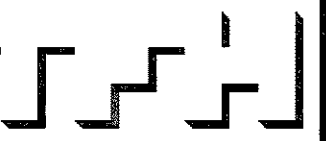


© 2007 TFH ARCHITECTS

THE ESTATES OF LONGFELLOW INN
130 EASTERN PROMENADE, PORTLAND, ME
CASCO BAY VENTURES



TFH ARCHITECTS
100 COMMERCIAL STREET
PORTLAND MAINE 04101
TELEPHONE 207 775 6141
ARCHITECTURE PLANNING

CONSULTANTS:
CIVIL:
Lund Consulting Engineers, PA
987 Broadway
South Portland, ME 04106
Tel: 207-761-7300
Fax: 1-866-207-2033
STRUCTURAL:
Shelley Engineering, Inc.
90 Bridge St. Suite 200
Westbrook, ME 04092
Ph: 207-854-5465 ext. 19
Fax: 207-854-8708

REVISIONS:

DATE: 02.14.2008

PROJECT No. 0610

DRAWN BY: SA

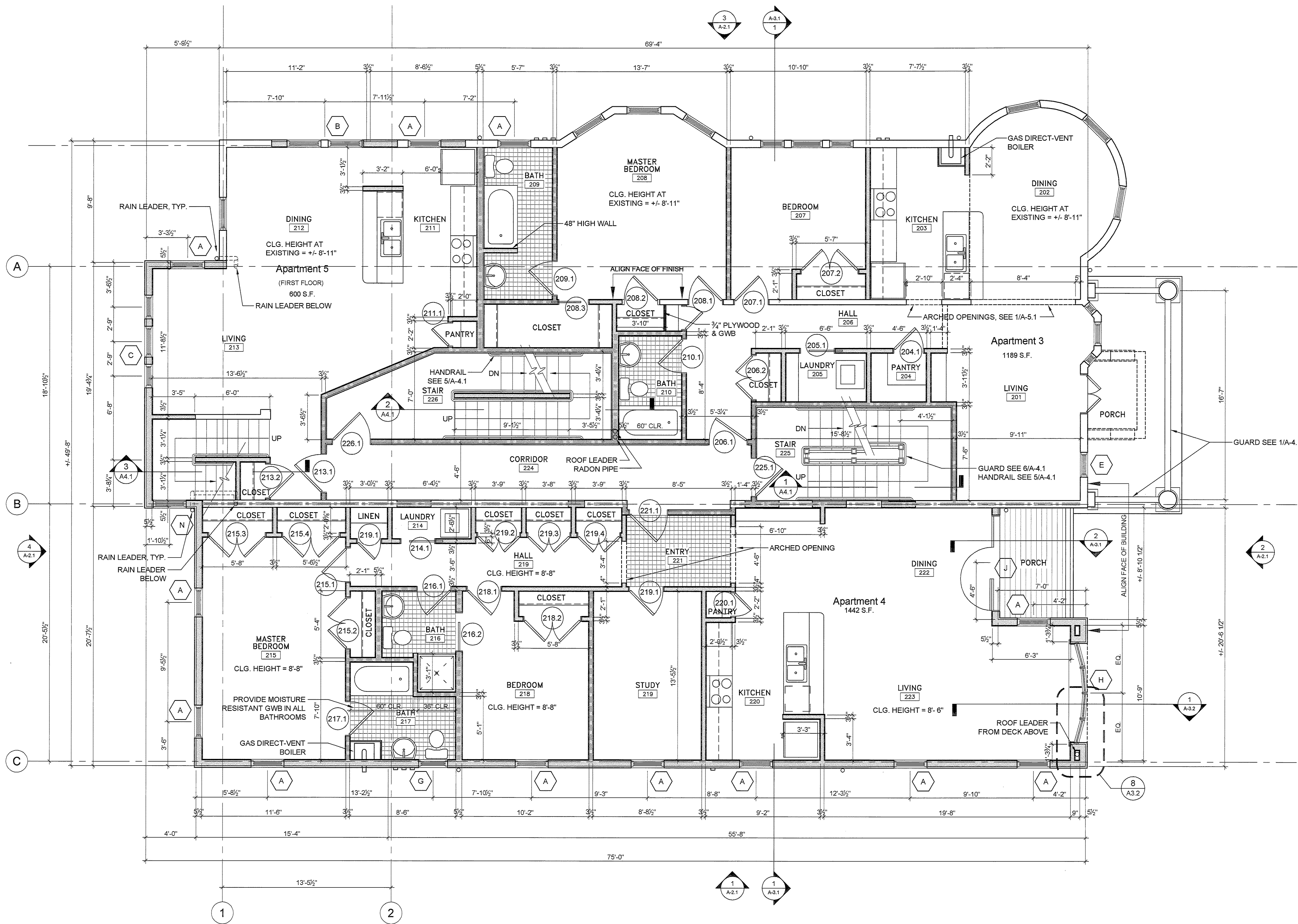
CHECKED BY: TST

SCALE: AS NOTED

SHEET TITLE:

2ND FLOOR PLAN

A1.3



1 FIRST FLOOR PLAN
A1.2 1/4" = 1'-0"

LEGEND

- EXISTING CONSTRUCTION TO REMAIN
- DEMOLITION
- NEW CONSTRUCTION
- NEW CONSTRUCTION WITH SOUND INSULATION
- 1 HOUR RATED NEW CONSTRUCTION
- 1 HOUR RATED EXISTING CONSTRUCTION

NOTE: SEE A-3.1 FOR CONSTRUCTION ASSEMBLIES

GENERAL NOTES (SEE G-1.1 FOR MORE GENERAL NOTES)

1. **DRAWING NOTES:** DRAWING NOTES, UNLESS THEY INDICATE OR ARE OBVIOUS, REFER TO NEW CONSTRUCTION.
2. **LAYOUT:** UNLESS INDICATED OTHERWISE, FLOOR PLAN DIMENSIONS ARE TO FINISH FACE OF EXISTING CONSTRUCTION AND ARE TO FACE OF FRAMING OF NEW CONSTRUCTION. DOORS AND WINDOWS ARE DIMENSIONED TO CENTERLINES OR ROUGH OPENINGS. STAIR TREAD AND RISER LAYOUT DIMENSIONS ARE TO TREAD NOSINGS.

* SEE G1.1 FOR SELECT SPECIFICATIONS