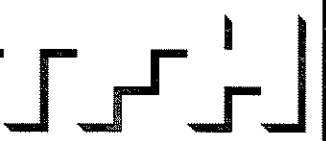


© 2007 TFH ARCHITECTS

THE ESTATES OF LONGFELLOW INN  
130 EASTERN PROMENADE, PORTLAND, ME  
CASCO BAY VENTURES



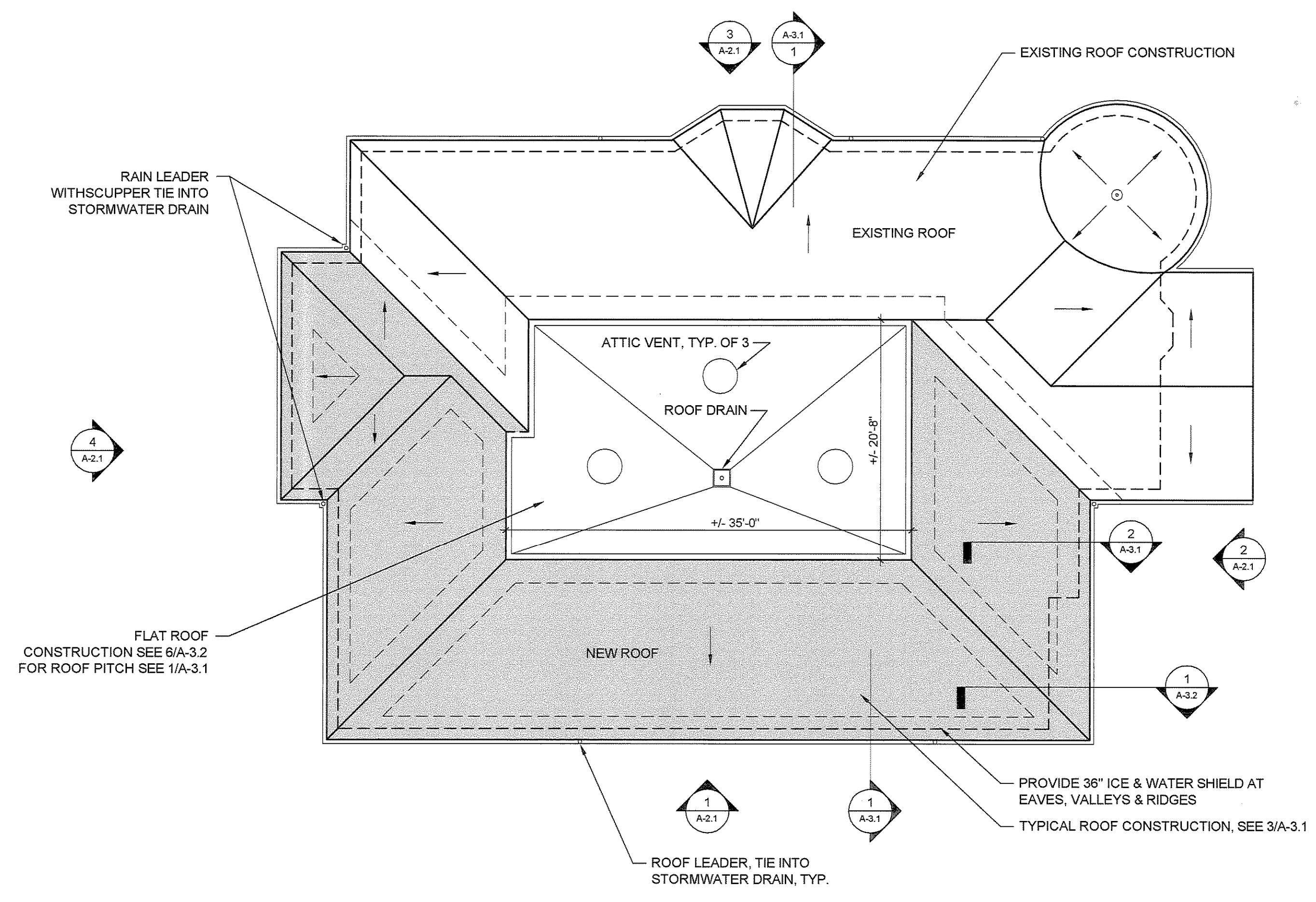
TFH ARCHITECTS  
100 COMMERCIAL STREET  
PORTLAND MAINE 04101  
TELEPHONE 207 775 6141  
ARCHITECTURE PLANNING

CONSULTANTS:  
CIVIL:  
Land Consulting Engineers, PA  
581 Broadway  
South Portland, ME 04106  
Tel: 207-761-7000  
Fax: 1-866-207-2033  
STRUCTURAL:  
Stanley Engineering, Inc.  
90 Bridge St. Suite 300  
Westbrook, ME 04092  
Ph: 207-854-5462 ext. 19  
Fax: 207-854-8706

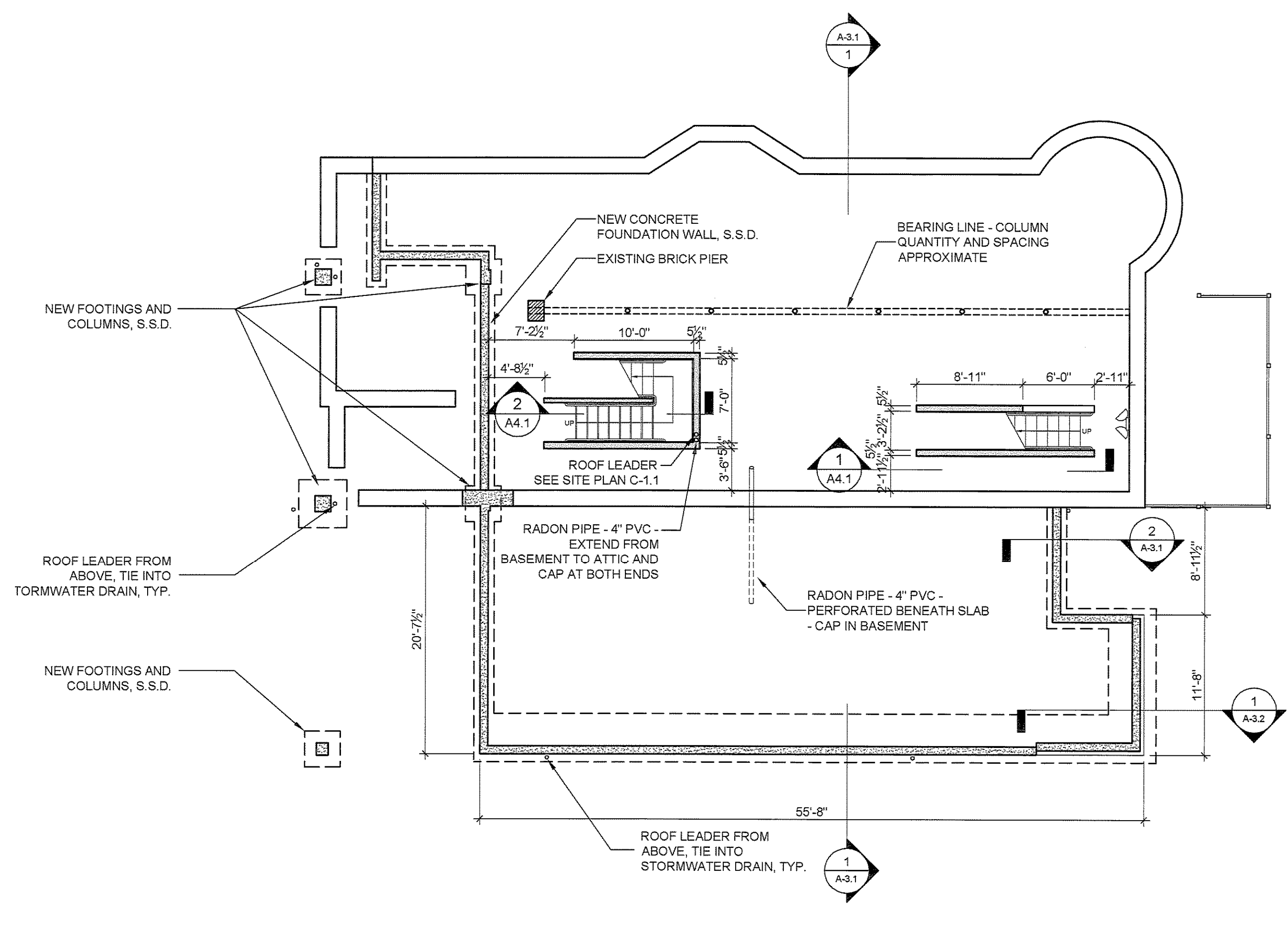
REVISIONS:  
DATE: 02.14.2008  
PROJECT No. 0610  
DRAWN BY: SA  
CHECKED BY: TST  
SCALE: AS NOTED

SHEET TITLE:  
BASEMENT AND  
ROOF PLAN

A1.1

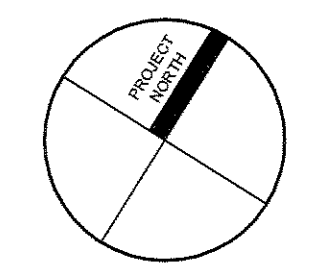
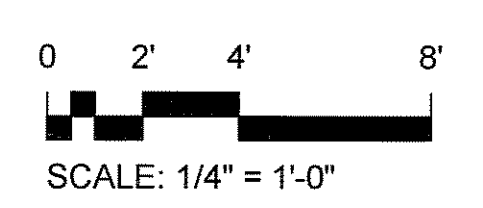


1 ROOF PLAN  
A1.1 1/8" = 1'-0"



1 BASEMENT PLAN  
A1.1 1/8" = 1'-0"

**LEGEND**  
— EXISTING CONSTRUCTION TO REMAIN  
- - - DEMOLITION  
▬ NEW CONSTRUCTION  
▬ 1 HOUR RATED NEW CONSTRUCTION  
▬ 1 HOUR RATED EXISTING CONSTRUCTION  
NOTE: SEE A-3.1 FOR CONSTRUCTION ASSEMBLIES



**GENERAL NOTES (SEE G-1.1 FOR MORE GENERAL NOTES)**  
1. **DRAWING NOTES:** DRAWING NOTES, UNLESS THEY INDICATE OR ARE OBVIOUS, REFER TO NEW CONSTRUCTION.  
2. **LAYOUT:** UNLESS INDICATED OTHERWISE, FLOOR PLAN DIMENSIONS ARE TO FINISH FACE OF EXISTING CONSTRUCTION AND ARE TO FACE OF FRAMING OF NEW CONSTRUCTION. DOORS AND WINDOWS ARE DIMENSIONED TO CENTERLINES OR ROUGH OPENINGS. STAIR TREAD AND RISER LAYOUT DIMENSIONS ARE TO TREAD NOSINGS.

\* SEE G.1.1 FOR SELECT SPECIFICATIONS