



**M A R K  
MUELLER  
ARCHITECTS**  
AJA

100 Commercial Street  
Portland, Maine 04101  
Phone: 207-754-0027  
Fax: 207-754-0028  
www.muellerarchitects.com

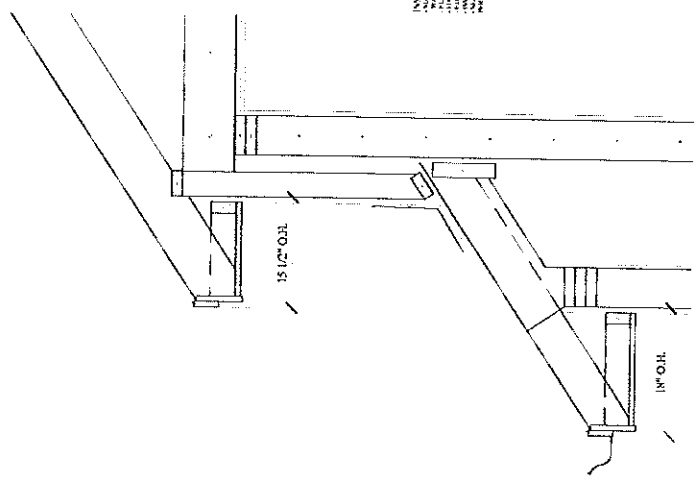
**130 EASTERN PROMENADE**  
FOR 130 EASTERN PROMENADE LLC  
110 MARGINAL WAY  
PORTLAND, MAINE 04101

PROPOSED RENOVATIONS

BUILDING SECTIONS

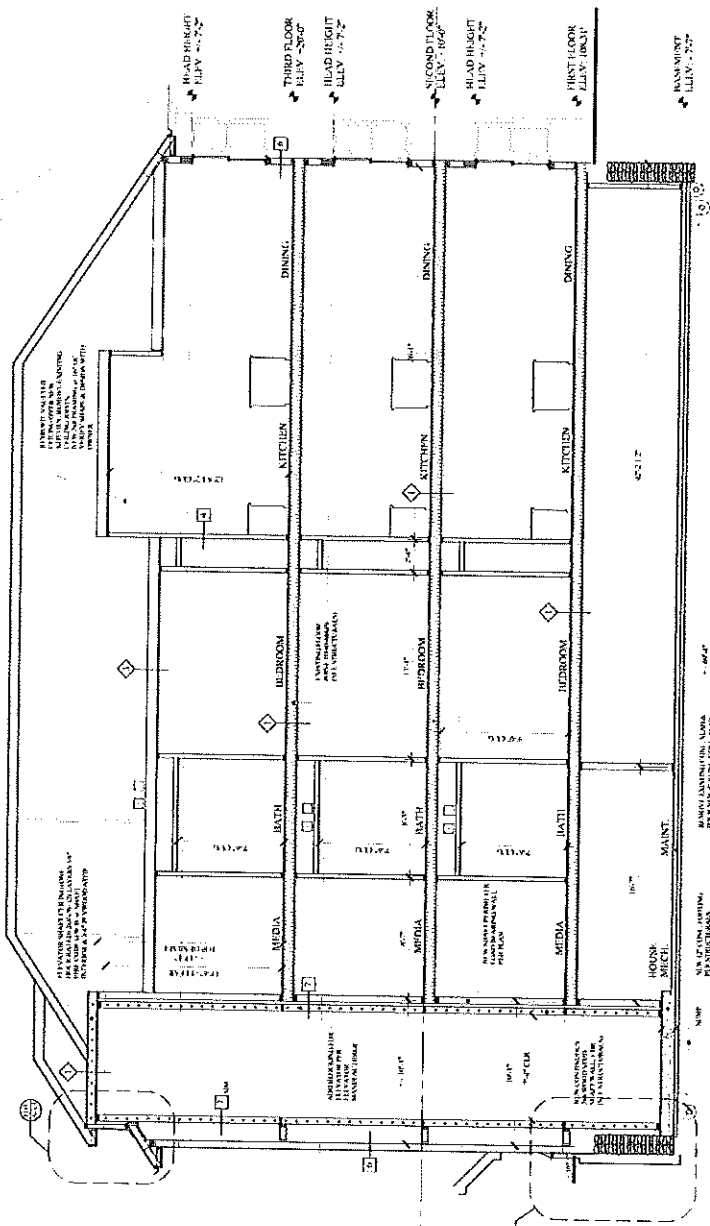
A-3-3

PERMIT SET:  
MAY 23, 2014



**F-3 FASCIA DETAIL**  
SCALE: 1/2" = 1'-0"

1. ALL INTERIORS SHALL BE FINISHED TO THE FINISHES SHOWN ON THE DRAWINGS UNLESS OTHERWISE NOTED.  
2. ALL INTERIORS SHALL BE FINISHED TO THE FINISHES SHOWN ON THE DRAWINGS UNLESS OTHERWISE NOTED.  
3. ALL INTERIORS SHALL BE FINISHED TO THE FINISHES SHOWN ON THE DRAWINGS UNLESS OTHERWISE NOTED.  
4. ALL INTERIORS SHALL BE FINISHED TO THE FINISHES SHOWN ON THE DRAWINGS UNLESS OTHERWISE NOTED.  
5. ALL INTERIORS SHALL BE FINISHED TO THE FINISHES SHOWN ON THE DRAWINGS UNLESS OTHERWISE NOTED.



**B-2 BUILDING SECTION**  
SCALE: 1/4" = 1'-0"

1. ALL INTERIORS SHALL BE FINISHED TO THE FINISHES SHOWN ON THE DRAWINGS UNLESS OTHERWISE NOTED.  
2. ALL INTERIORS SHALL BE FINISHED TO THE FINISHES SHOWN ON THE DRAWINGS UNLESS OTHERWISE NOTED.  
3. ALL INTERIORS SHALL BE FINISHED TO THE FINISHES SHOWN ON THE DRAWINGS UNLESS OTHERWISE NOTED.  
4. ALL INTERIORS SHALL BE FINISHED TO THE FINISHES SHOWN ON THE DRAWINGS UNLESS OTHERWISE NOTED.  
5. ALL INTERIORS SHALL BE FINISHED TO THE FINISHES SHOWN ON THE DRAWINGS UNLESS OTHERWISE NOTED.