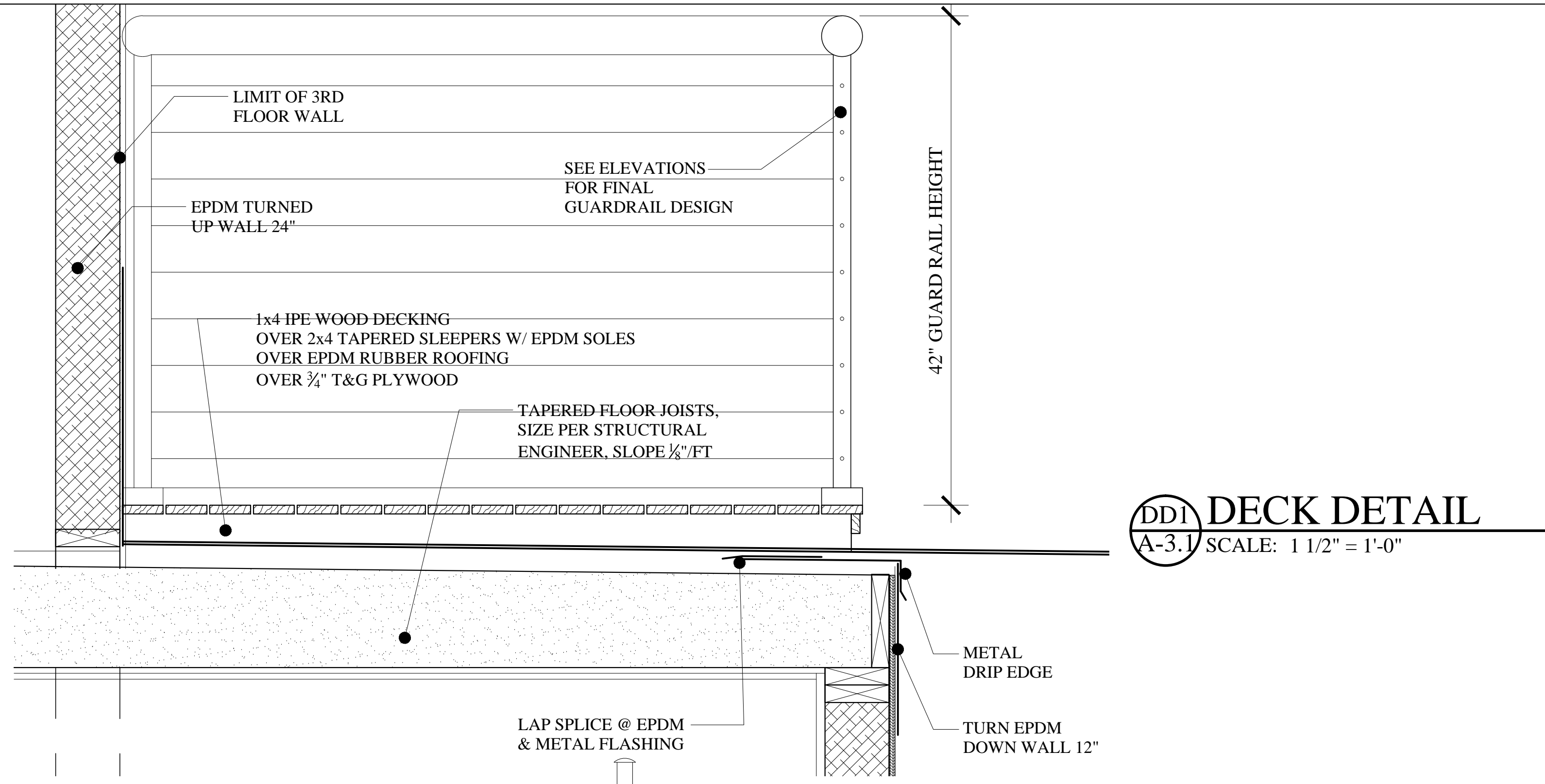
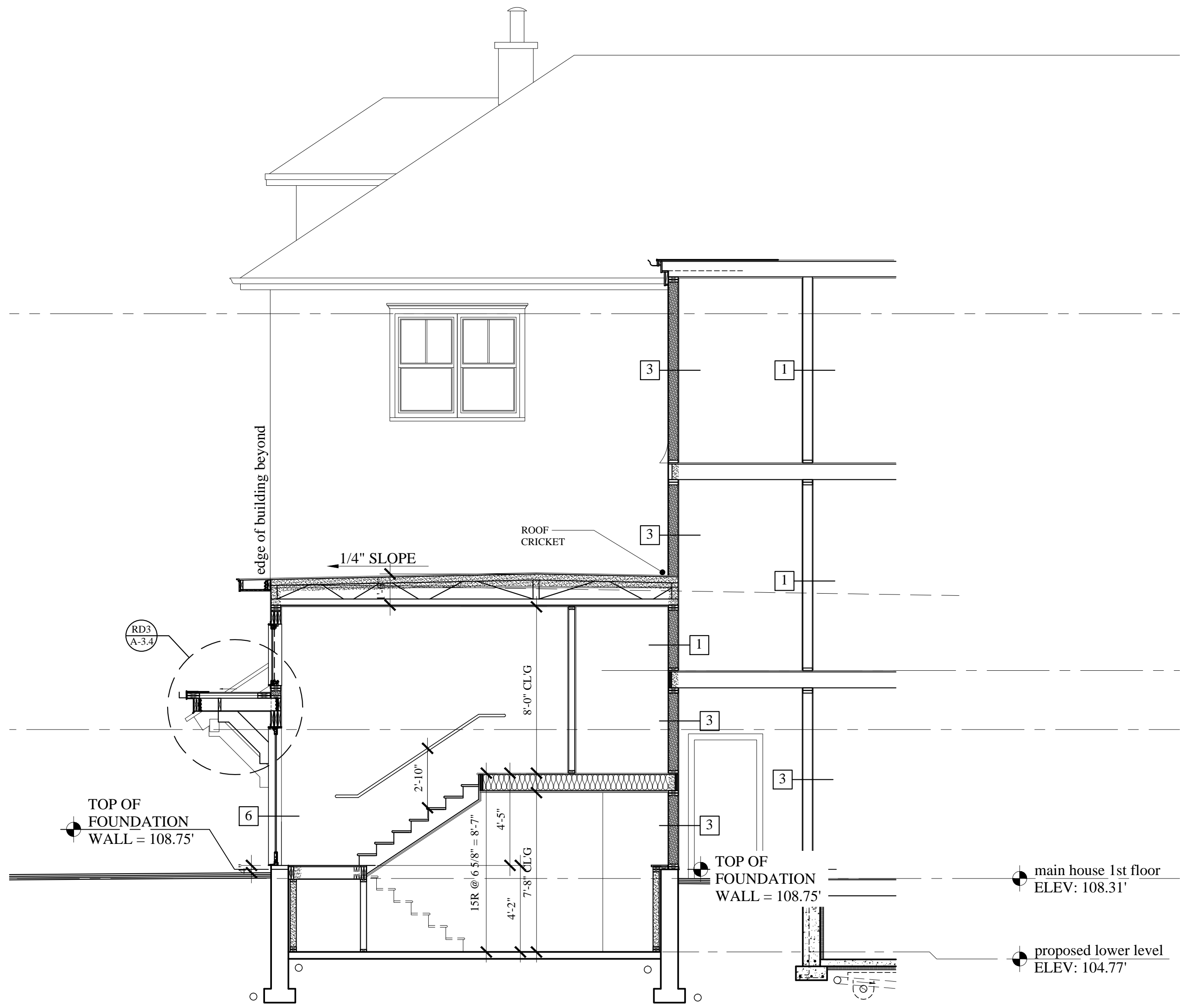


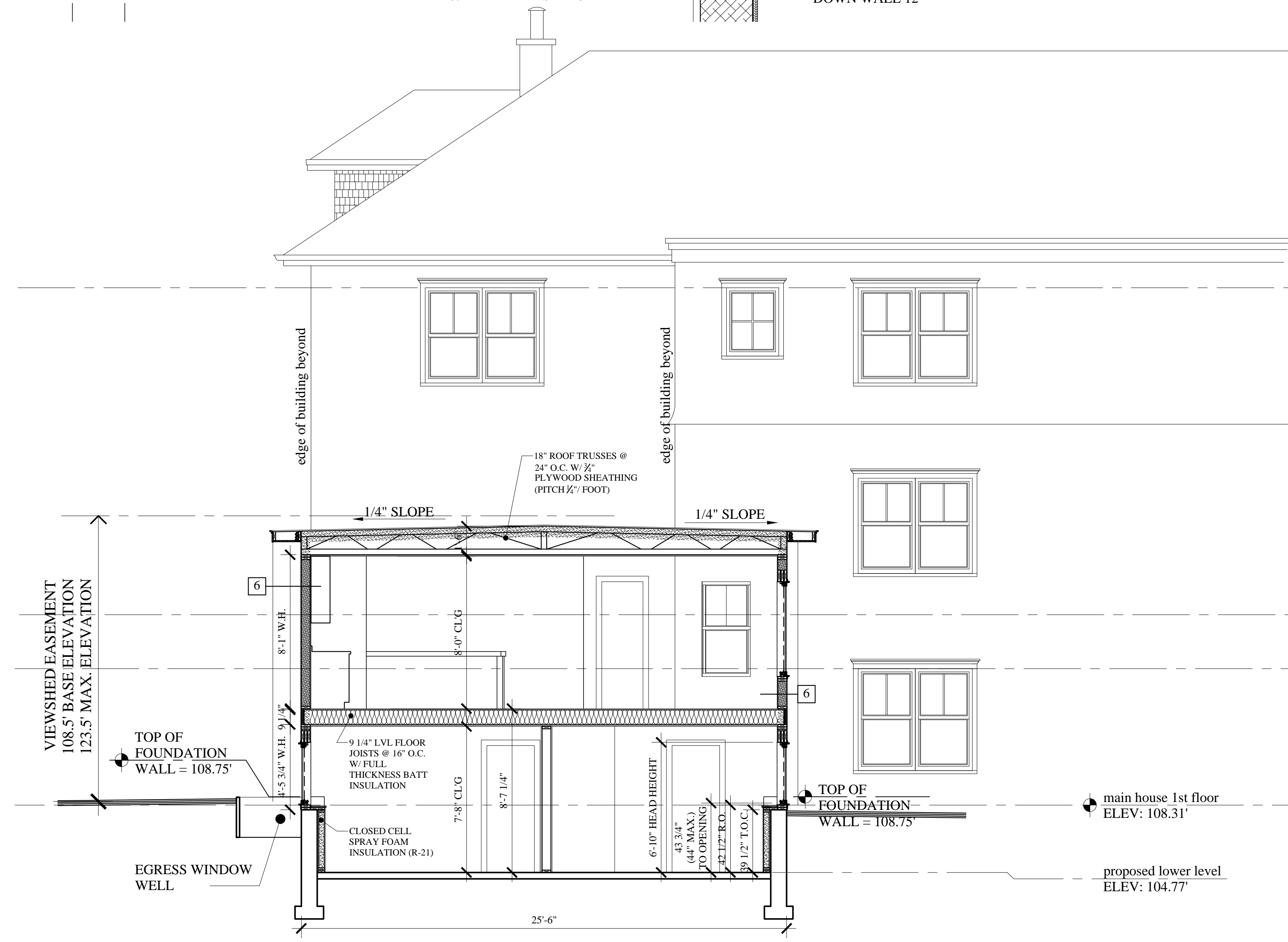
**RD3 ROOF DETAIL**  
A-3.4 SCALE: 1 1/2" = 1'-0"



**DD1 DECK DETAIL**  
A-3.1 SCALE: 1 1/2" = 1'-0"



**B4 BUILDING SECTION**  
A-1.0 SCALE: 1/4" = 1'-0"



**B3 BUILDING SECTION**  
A-1.0 SCALE: 1/4" = 1'-0"

**BUILDING PERMIT ADDENDA SET: DECEMBER 31, 2014**  
**REVISED: NOVEMBER 28, 2014**  
**CONSTRUCTION SET: AUGUST 11, 2014**

**MARK MUELLER ARCHITECTS**  
A.I.A.  
100 Commercial Street  
Suite 205  
Portland, Maine 04101  
Phone: 207.774.9057  
Email: rfi@muellerarchitects.com

PROPOSED RENOVATIONS @:  
**130 EASTERN PROMENADE**  
FOR: 130 EASTERN PROMENADE LLC  
110 MARGINAL WAY  
PORTLAND, MAINE 04101

**BUILDING SECTIONS**

REVISIONS	DATE
1	02/24/2011
PROJECT	130 E. PROM.
DRAWN BY	MRP
CHECK BY	MAM

Revision 1: 11.28.14  
SK-1: Coordination & Clarifications