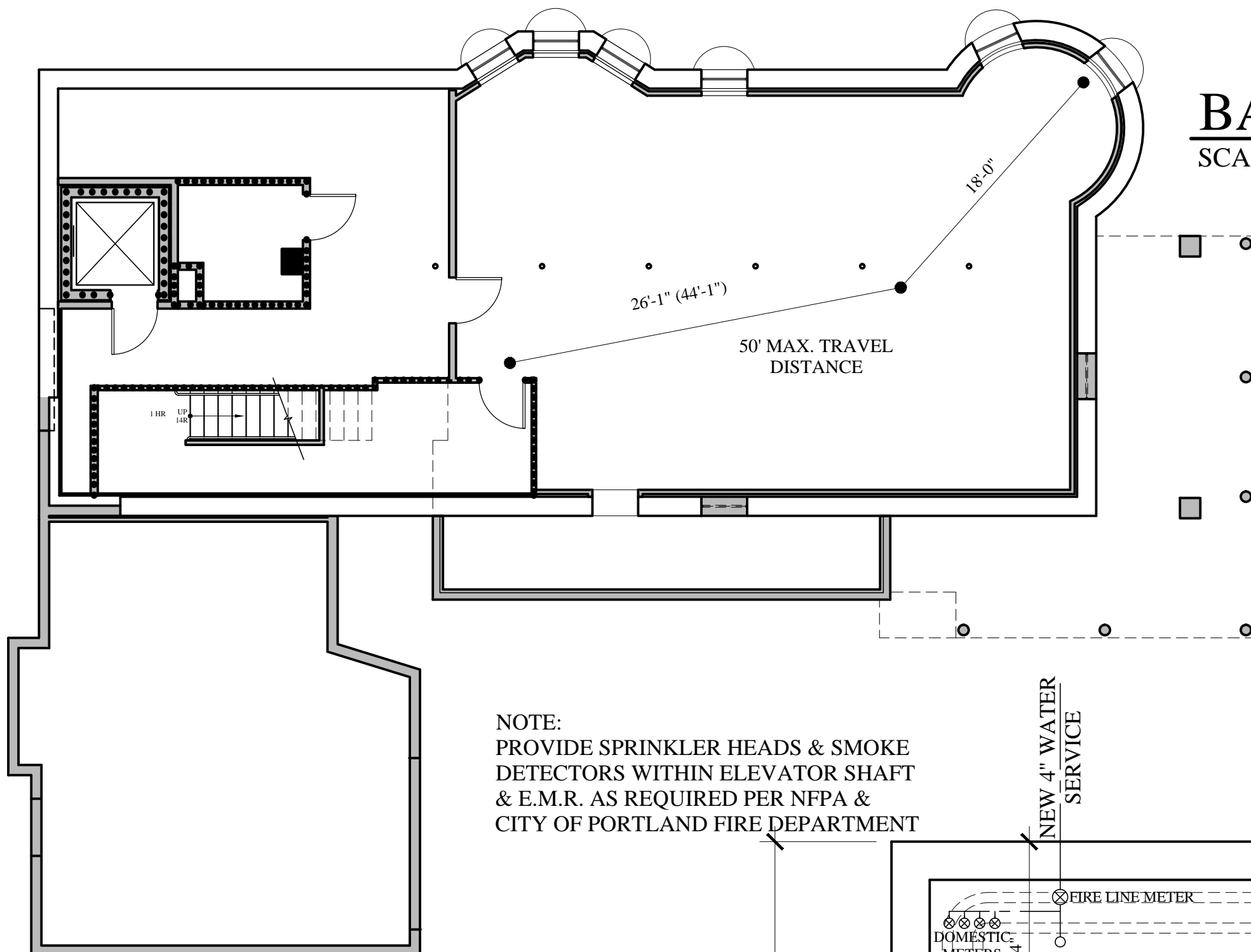


BASEMENT TRAVEL DISTANCE

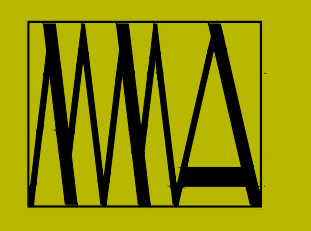
SCALE: 1/8" = 1'-0"



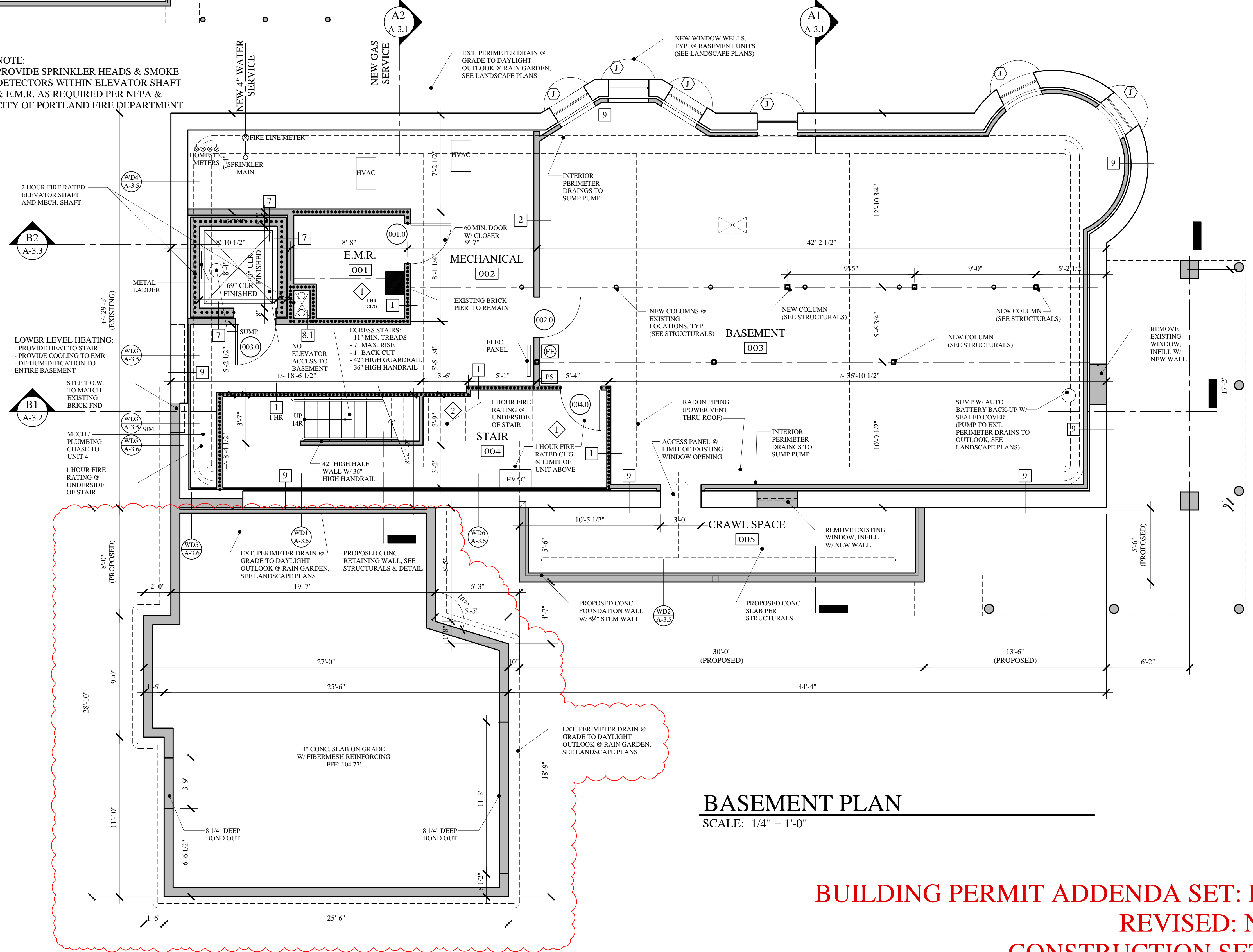
NOTE:
PROVIDE SPRINKLER HEADS & SMOKE DETECTORS WITHIN ELEVATOR SHAFT & E.M.R. AS REQUIRED PER NFPA & CITY OF PORTLAND FIRE DEPARTMENT

WALL LEGEND

EXISTING WALL	
NEW WALL	
FIRE RATED WALL	
1 HOUR	
2 HOUR	
3 HOUR	
EXISTING WALL TO BE REMOVED	



MARK MUELLER ARCHITECTS
A.I.A.
100 Commercial Street
Suite 205
Portland, Maine 04101
Phone: 207.774.9057
Email: rfi@muellerarchitects.com



2 HOUR FIRE RATED ELEVATOR SHAFT AND MECH. SHAFT.
B2 A-3.3

LOWER LEVEL HEATING:
- PROVIDE HEAT TO STAIR
- PROVIDE COOLING TO EMR
- DE-HUMIDIFICATION TO ENTIRE BASEMENT
B1 A-3.2

BUILDING PERMIT ADDENDA SET: DECEMBER 31, 2014
REVISED: NOVEMBER 28, 2014
CONSTRUCTION SET: AUGUST 11, 2014

PROPOSED RENOVATIONS @:
130 EASTERN PROMENADE
FOR: 130 EASTERN PROMENADE LLC
110 MARGINAL WAY
PORTLAND, MAINE 04101

BASEMENT FLOOR PLAN

REVISIONS	DATE
Revision 1: 11.28.14	02.24.2011
SK-1: Coordination & Clarifications	
PROJECT	130 E. PROM.
DRAWN BY	MRP
CHECKED BY	MAM

A-1.4