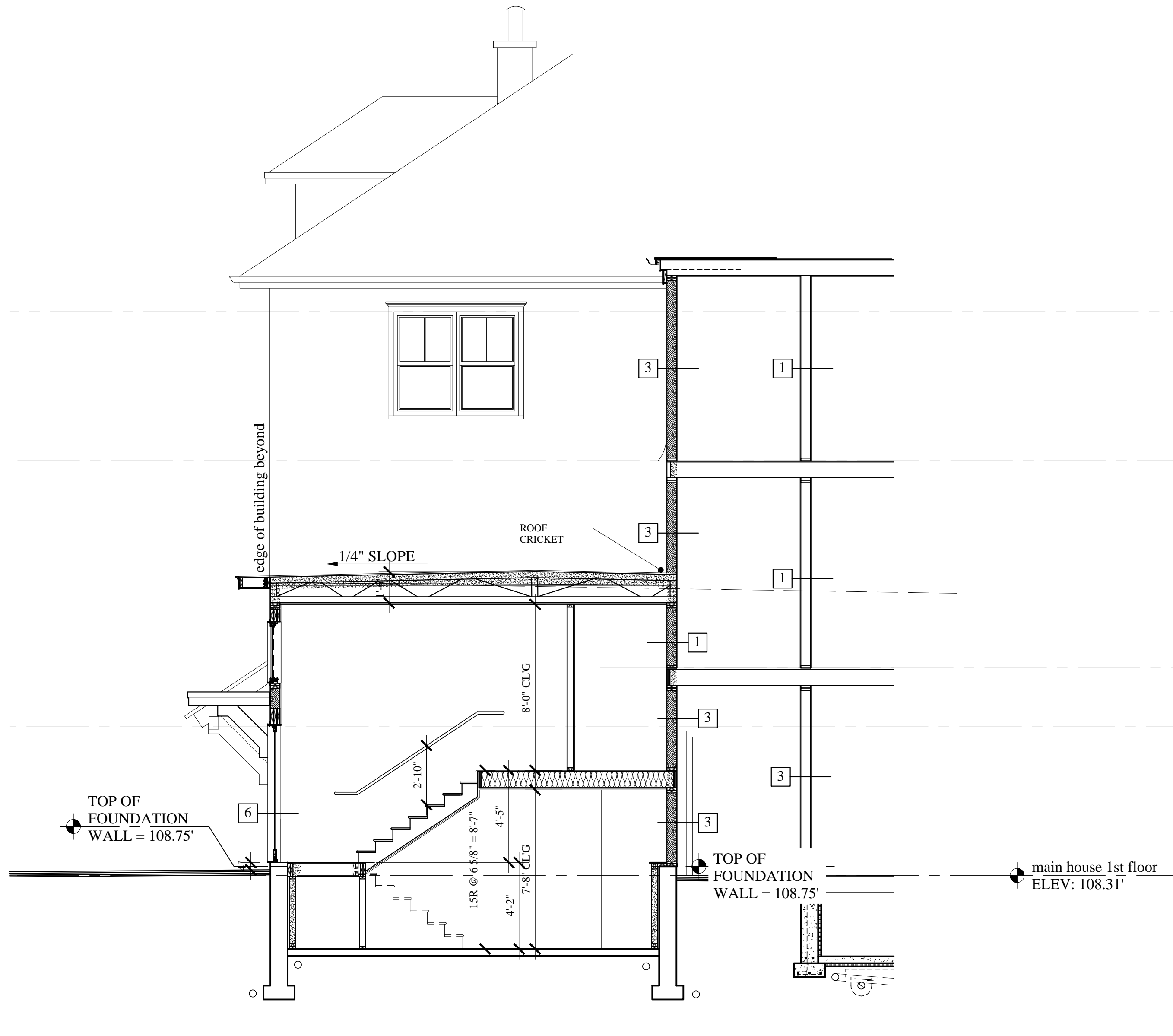




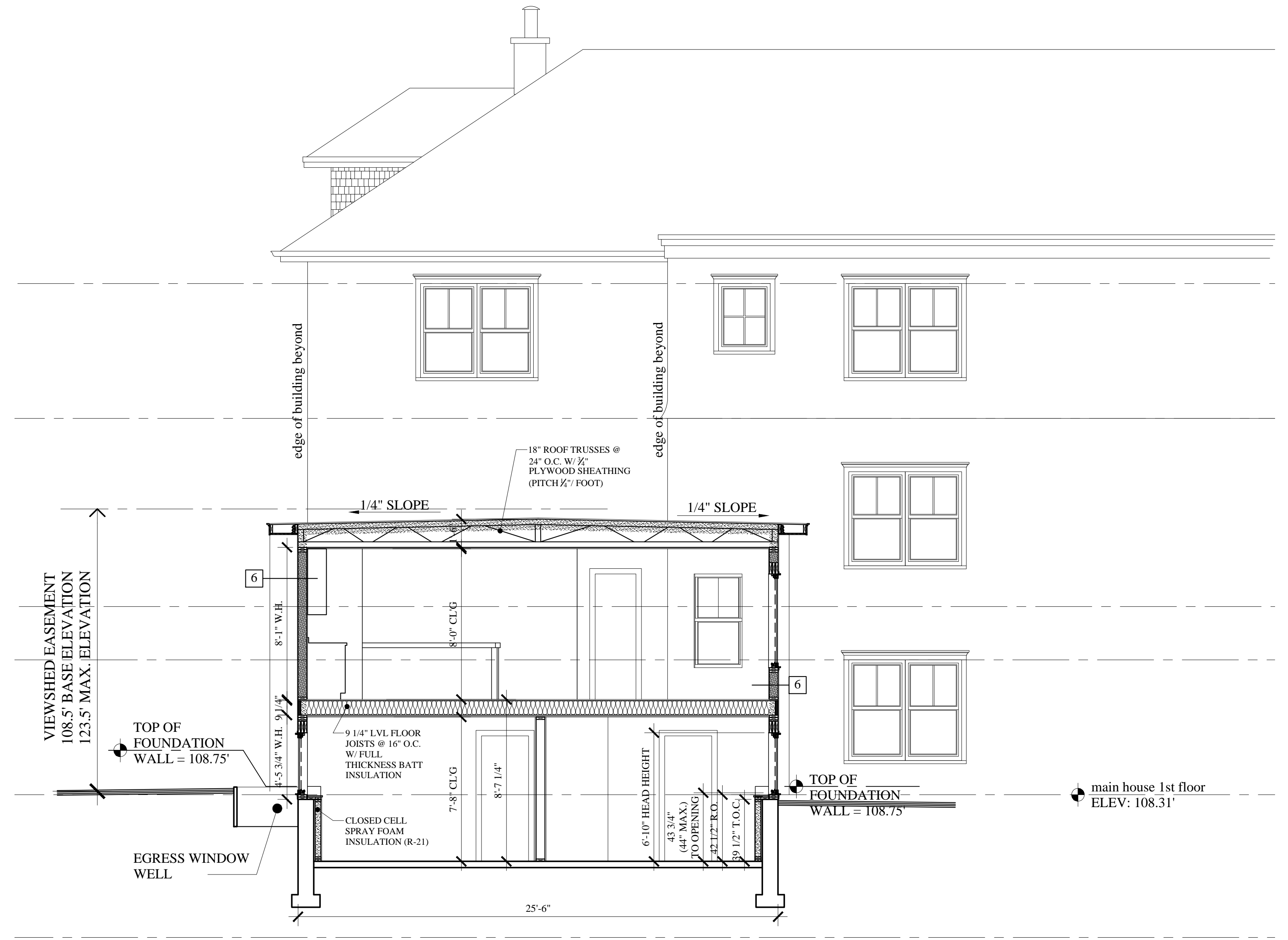
**MARK  
MUELLER  
ARCHITECTS**  
A.I.A.  
100 Commercial Street  
Suite 205  
Portland, Maine 04101  
Phone: 207.774.9057  
Email:  
rfi@muellerarchitects.com

© COPYRIGHT 2014  
MARK MUELLER ARCHITECTS

PROPOSED RENOVATIONS @:  
**130 EASTERN PROMENADE**  
FOR: 130 EASTERN PROMENADE LLC  
110 MARGINAL WAY  
PORTLAND, MAINE 04101



**B4 BUILDING SECTION**  
A-1.0 SCALE: 1/4" = 1'-0"



**B3 BUILDING SECTION**  
A-1.0 SCALE: 1/4" = 1'-0"

**BUILDING PERMIT ADDENDA SET: DECEMBER 31, 2014**  
**REVISED: NOVEMBER 28, 2014**  
**CONSTRUCTION SET: AUGUST 11, 2014**

**BUILDING SECTIONS**

REVISIONS	DATE
Revision 1: 11.28.14	02.24.2011
SK-1: Coordination & Clarifications	
PROJECT	130 E. PROM
DRAWN BY	MRP
CHECK BY	MAM